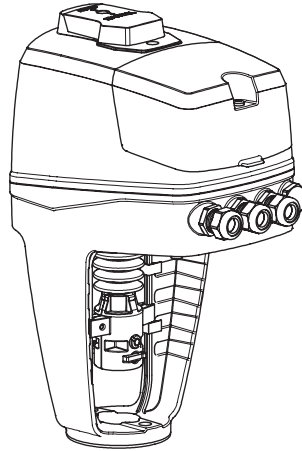
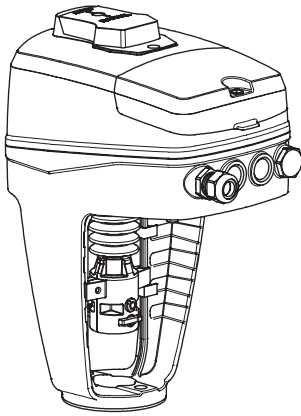


TA-Slider 750/1250

TA-Slider 750/1250 Plus





0°C - +50°C

32°F - +122°F

(5-95%RH, non-condensing)



0°C - +120°C

32°F - +248°F



-20°C - +70°C

-4°F - +158°F

(5-95%RH, non-condensing)



Input signal: 0-10 VDC
Output signal: 0-10 VDC
Speed: 3 s/mm
Characteristic: Linear



230V

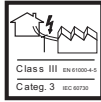


24V

Plus versions with Relay Without Relay



Pollution degree 3



Class III EN 60604-5
Categ. 3 IEC 61010

Software
A
EN 60730

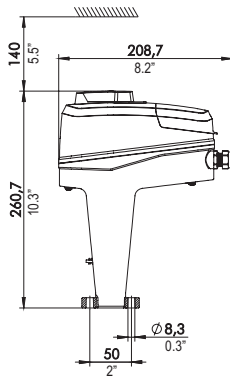
Type
1AB
EN 60730

IP54
EN 60730

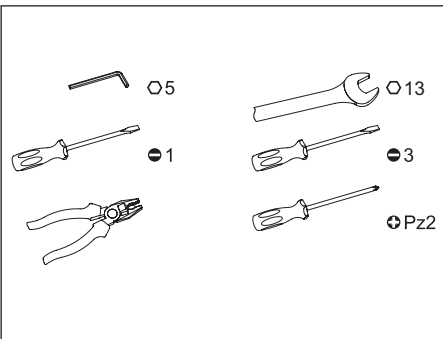
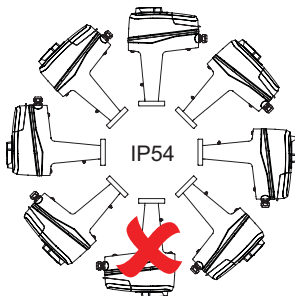
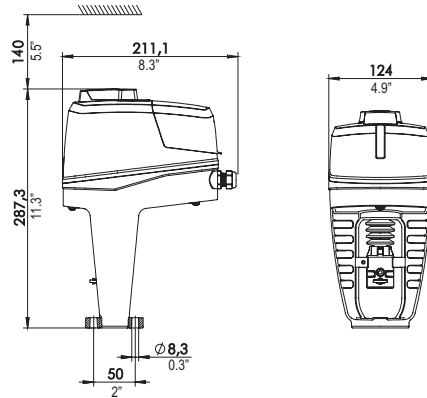


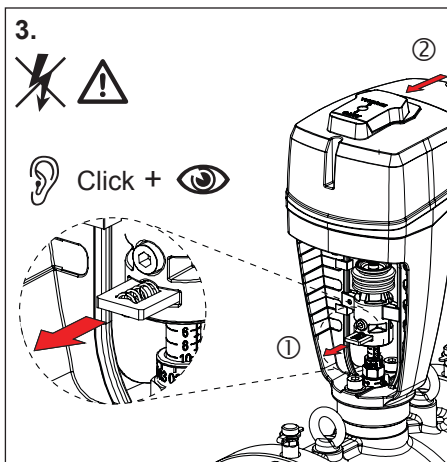
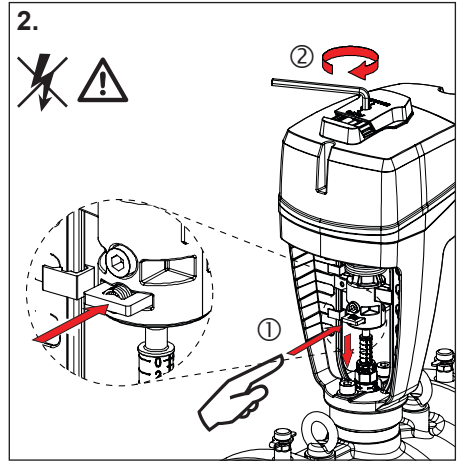
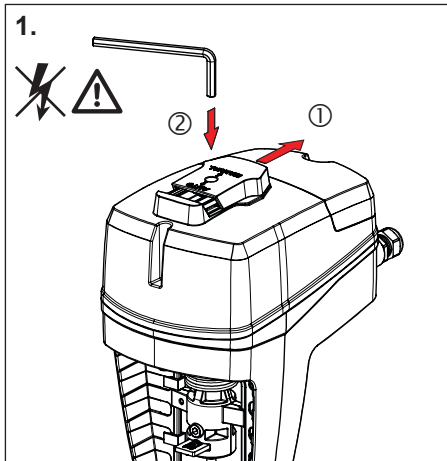
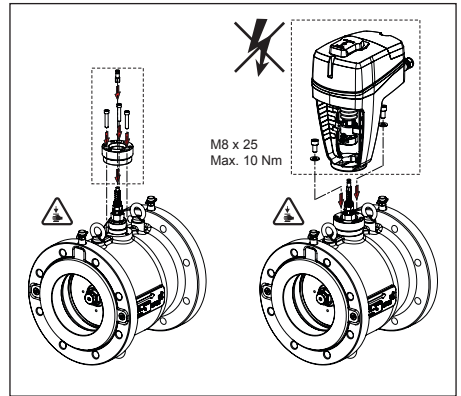
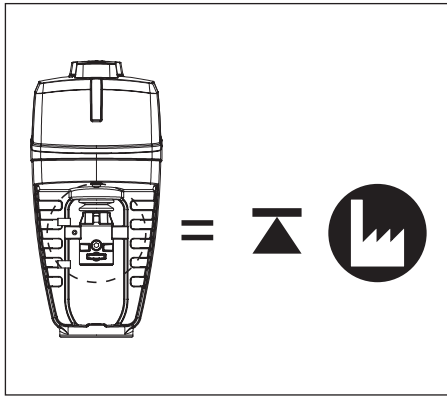
EN 60730

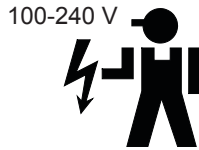
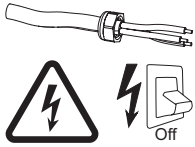
TA-Slider 750/1250



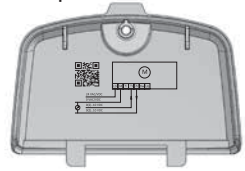
TA-Slider 750/1250 Plus



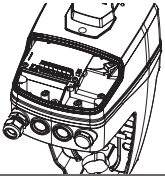




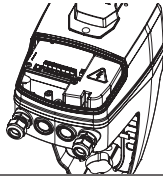
Example!



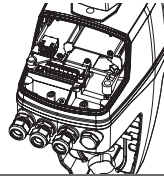
TA-Slider 750/1250
24 V



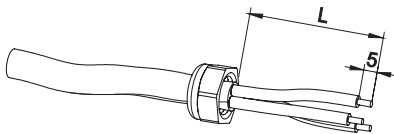
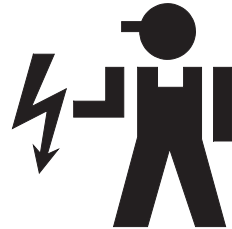
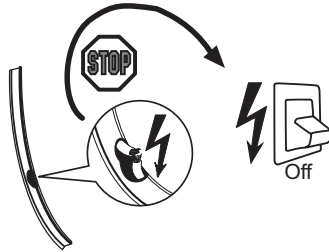
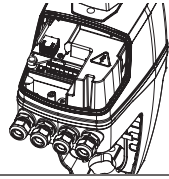
100-240 V



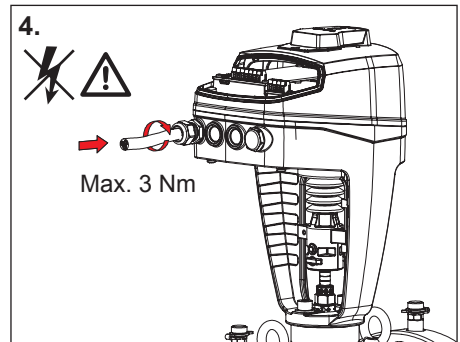
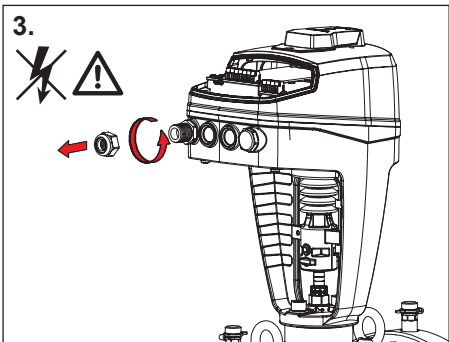
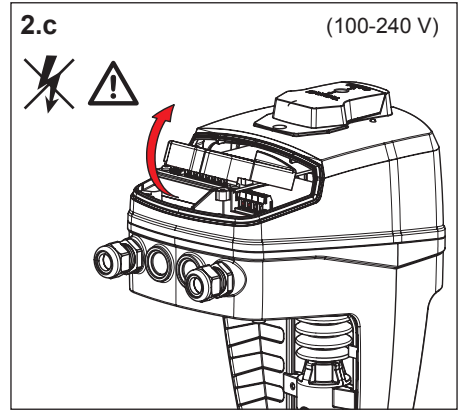
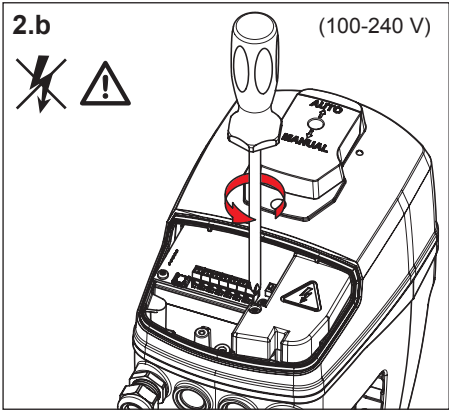
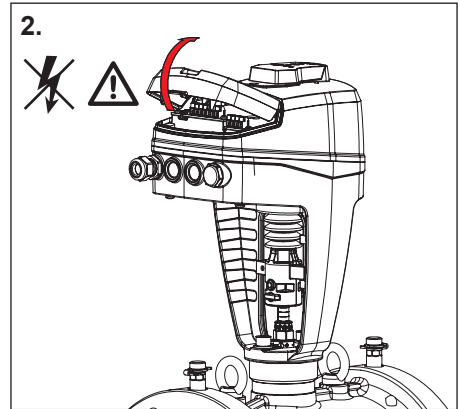
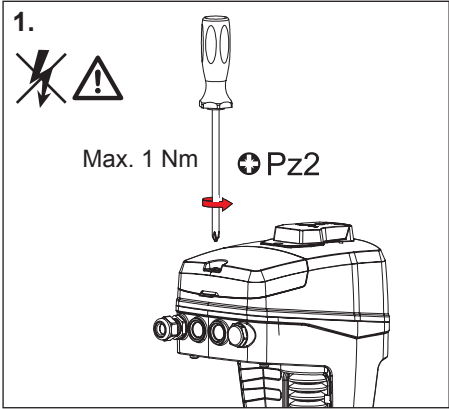
TA-Slider 750/1250 Plus
24 V



100-240 V



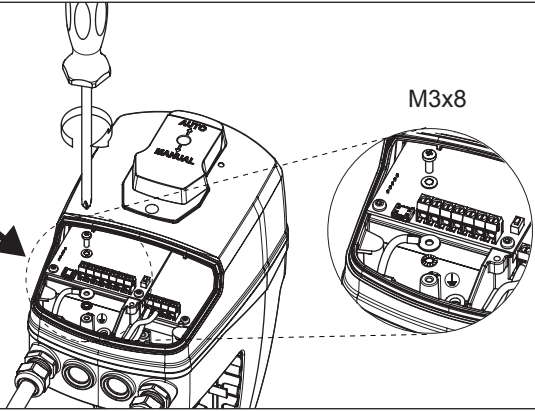
Protection class I: H05VV-F or similar
 Protection class III: LiYY or similar
 Wire cross-section: 0.25-2.0 mm²
 L = 100 mm
 Grounding wire L = 120 mm



5.



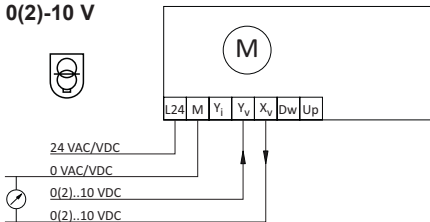
Note: Only protection class I



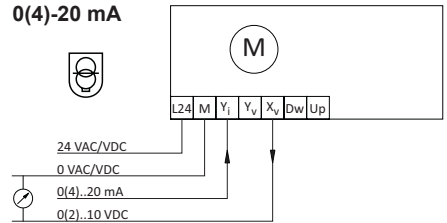
Terminal	Description
L24	Power supply 24 VAC/VDC
M*	Neutral for power supply 24 VAC/VDC and signals
L	Power supply 100-240 VAC
N	Neutral for power supply 100-240 VAC
Y _i	Input signal for proportional control 0(4)..20 mA, 500 Ω
Y _v	Input signal for proportional control 0(2)..10 VDC, 47 kΩ
X _i	Output signal 0(4)..20 mA, max. resistance 700 Ω
X _v	Output signal 0(2)..10 VDC, max. 8 mA or min. load resistance 1.25 kΩ
Dw	3-point control signal for extending actuator spindle (24 VAC/VDC or 100-240 VAC)
Up	3-point control signal for retracting actuator spindle (24 VAC/VDC or 100-240 VAC)
B	Connection for potential free contact (e.g. open window detection), max. 100 Ω, max. 10 m cable or shielded
COM1, COM2	Common contacts of relays 1 & 2, max. 250 VAC, max. 5A @ 250 VAC on resistive
NC1, NC2	Normally closed contacts for relay 1 & 2
NO1, NO2	Normally open contacts for relay 1 & 2

24 V

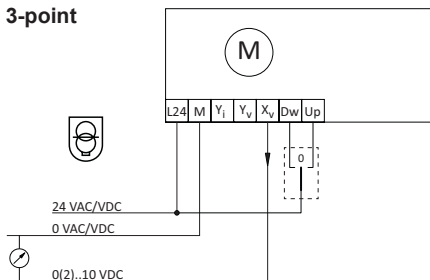
0(2)-10 V



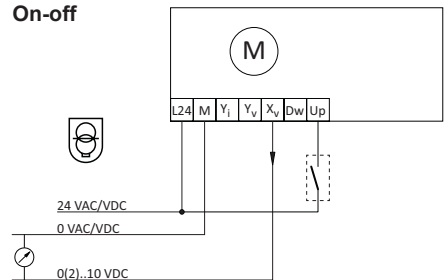
0(4)-20 mA



3-point



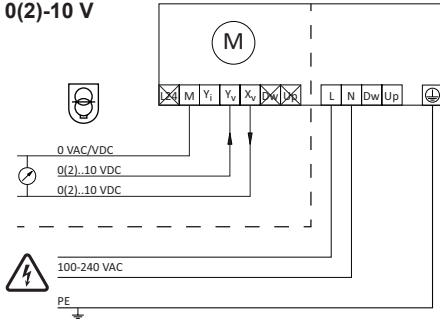
On-off



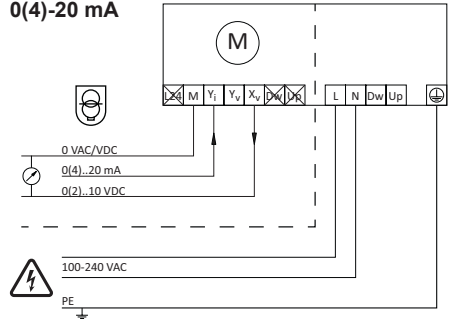
24 VAC/DC operating only with safety transformer according EN 61558-2-6

100-240 V

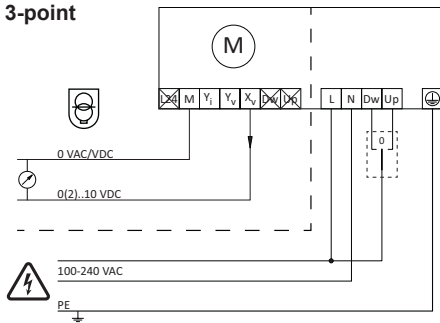
0(2)-10 V



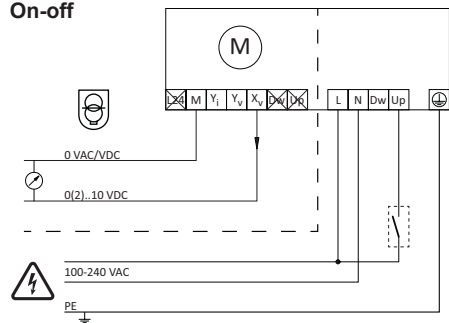
0(4)-20 mA



3-point

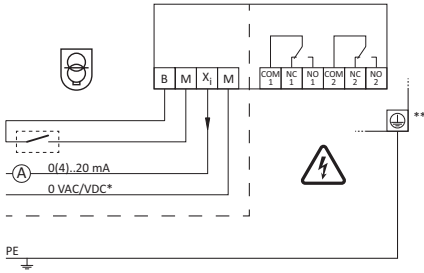


On-off



24 VAC/DC operating only with safety transformer according EN 61558-2-6

Relay (TA-Slider 750/1250 Plus)

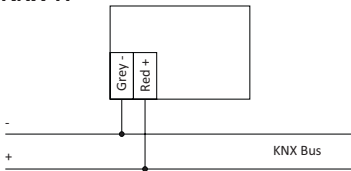


*) Low voltage neutral

**) Ground connection required.

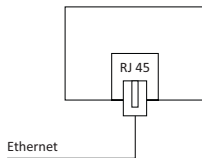
BUS (TA-Slider 750/1250 Plus)

KNX TP

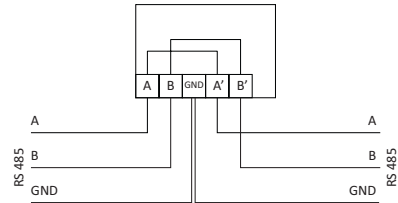
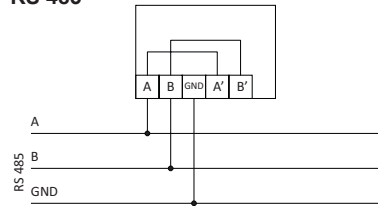


Note: KNX terminals are isolated from all other terminals.

Ethernet (KNX IP, BACnet/IP, Modbus/TCP)

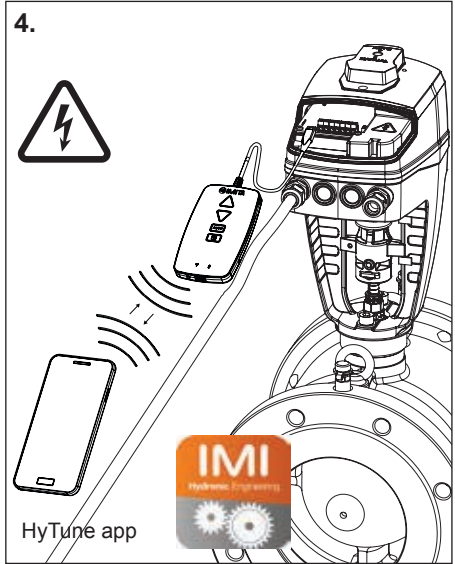
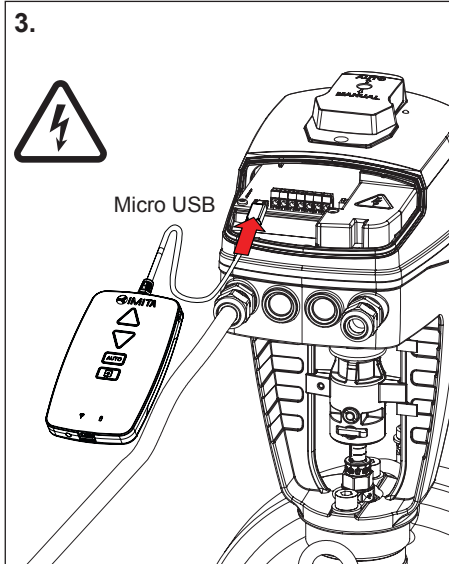
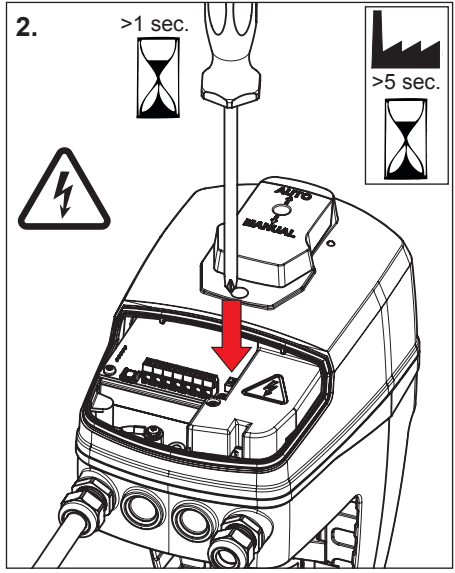
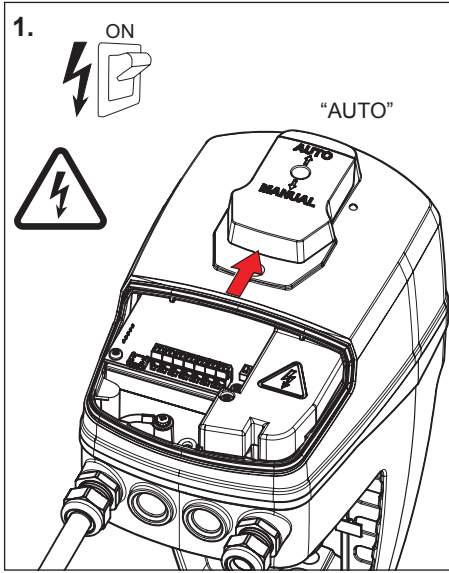


RS 485







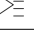

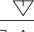
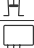
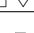

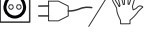
Note: A, B, A', B' and GND terminals are isolated from all other terminals.

Quick start


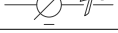

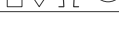


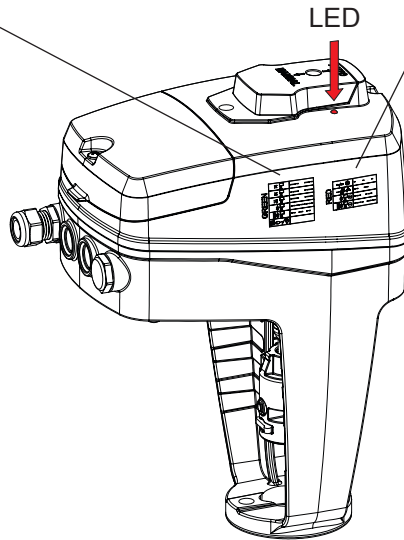
LED

GREEN

 	— — — —
 	— — — —
 	— — — —
 	— — — —
 	— — — —
	

RED

	— — — —
	— — — —
	— — — —
	— — — —



We reserve the right to introduce technical alterations without previous notice.



Hydronic Engineering

www.imi-hydronic.com