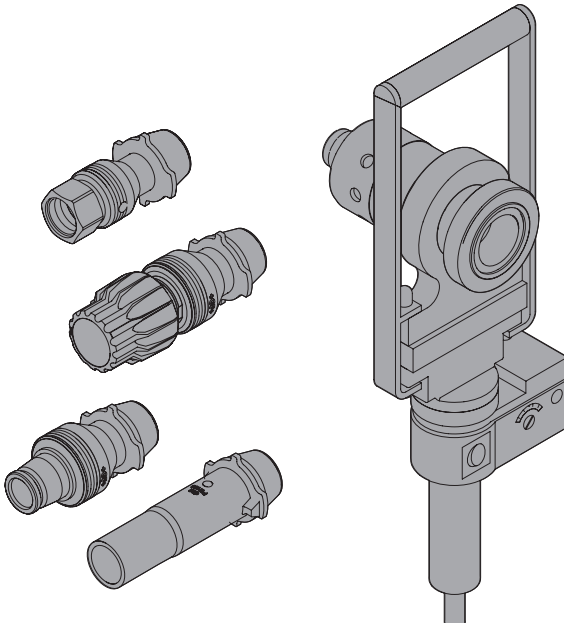


Installationsanleitung Installation instructions



COOL-FIT
Einschweiss-Nippel

COOL-FIT
Weld-in port

| | |
|---|----------|
| Installationsanleitung | |
| COOL-FIT Einschweiss-Nippel..... | 5 |

| | |
|------------------------------------|-----------|
| Installation instructions | |
| COOL-FIT Weld-in port | 25 |

Inhaltsverzeichnis

| | |
|--|-----------|
| 1. Wichtige Informationen | 6 |
| 1.1 Lieferumfang..... | 6 |
| 1.2 Zusätzlich benötigte Werkzeuge | 6 |
| 1.3 Mitgelte Dokumente | 6 |
| 1.4 Zeichen und Symbole | 6 |
| 2. Sicherheit | 6 |
| 2.1 Bestimmungsgemäße Verwendung..... | 6 |
| 2.2 Zielgruppe und Qualifikation | 7 |
| 2.3 Sicherheitshinweise..... | 7 |
| 3. Transport und Lagerung..... | 7 |
| 4. Übersicht Werkzeugkoffer | 8 |
| 5. Übersicht Komponenten pro Fittings-Dimension | 9 |
| 6. Vorbereitung | 10 |
| 7. Bohren..... | 12 |
| 8. Schweißen..... | 15 |
| 9. Schweißnahtkontrolle..... | 18 |
| 10. Dämmung anbringen | 19 |
| 11. Hilfe bei Problemstellungen | 20 |
| 12. Ersatzteilliste | 22 |
| 13. Entsorgung | 23 |

1. Wichtige Informationen

1.1 Lieferumfang

Der Lieferumfang des Installationswerkzeugs der COOL-FIT Einschweiss-Nippel umfasst Folgendes:

- Werkzeug inkl. Komponenten für Abgangsdimensionen ½"-1", d16-d32
- Komponenten d40+d50 (optional)
- Installationsanleitung COOL-FIT Einschweiss-Nippel

1.2 Zusätzlich benötigte Werkzeuge

Folgende Werkzeuge und Materialien werden zusätzlich benötigt:

- Elektrobahrschrauber ≥ 12 Nm, z. Bsp. Makita DDF481, 18V, Stufe 1: 0-550 min⁻¹, mit zusätzlicher Halterung rechtwinklig zur Bohrachse
- Staubsauger
- Tangit PE Reiniger
- Fusselfreie, unbedruckte Tücher
- Einweghandschuhe
- Kartuschenpresse
- GF Abdichtmasse (GF Artikel 738011103)




1.3 Mitgeltende Dokumente

Folgende Dokumente sind Bestandteil des Produkts und müssen beachtet werden:

- GF Planungsgrundlagen COOL-FIT 2.0 / COOL-FIT 4.0

Die Dokumente erhalten Sie über Ihre GF-Vertretung oder unter www.gfps.com.

1.4 Zeichen und Symbole

| Symbol | Bedeutung |
|---|--|
|  | Handlung erforderlich |
|  | Sichtprüfung durchführen (z. B. des Rohrs) |
|  | Montageanleitung Einschweiss-Nippel beachten |

2. Sicherheit

Die Installationsanleitung ist Bestandteil des GF Produkts und muss vor der Bedienung sorgfältig gelesen werden. Die Installationsanleitung muss jederzeit verfügbar sein.

2.1 Bestimmungsgemäße Verwendung

Das COOL-FIT Installationswerkzeug der Einschweiss-Nippel ist dazu bestimmt, unter Verwendung der COOL-FIT Einschweiss-Nippel, Abgänge an unbefüllten und trockenen Rohren COOL-FIT 2.0, COOL-FIT 2.0F, COOL-FIT 4.0 und COOL-FIT 4.0F in den Dimensionen d63-d225 anzubringen.

2.2 Zielgruppe und Qualifikation

Das Installationswerkzeug darf nur durch Fachkräfte verwendet werden, die regelmäßig in Arbeitssicherheit und Umweltschutz an druckführenden Rohrleitungen unterwiesen werden und im Umgang mit dem Installationswerkzeug für Einschweiss-Nippel geschult wurden.

2.3 Sicherheitshinweise

Sachschaden

Eine unsachgemässe Bedienung des Werkzeugs kann zu Verletzungen wie z. Bsp. Schnittverletzungen oder Verbrennungen führen.

- ▶ Installationsanleitung COOL-FIT Einschweiss-Nippel beachten.
- ▶ Aufgrund rotierender und heisser Teile ist von umstehenden Personen ein Sicherheitsabstand von 1m einzuhalten.
- ▶ Aufgrund Sturzgefahr beim Umgang mit dem Installationswerkzeug ist die Verwendung auf Leitern untersagt und es wird die Verwendung von Hebebühnen empfohlen.
- ▶ Bei Überkopfmontage muss der Bereich unterhalb der Installationsstelle von umstehenden Personen freigehalten werden.

Der Verstoß gegen örtliche sowie länderspezifische Vorschriften, Bestimmungen und Normen kann Sachschäden verursachen.

Persönliche Bekleidung

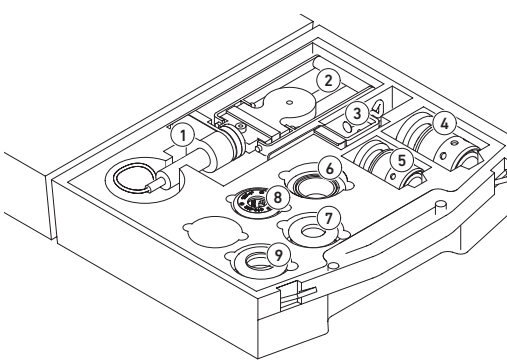
Um Verletzungen zu vermeiden wird folgendes empfohlen:

- Enge Kleidung tragen
- Schmuck abnehmen
- Schutzbrille tragen
- Ggf. Haarnetz tragen
- Schnittsichere Handschuhe tragen
- Sicherheitsschuhe tragen
- Helm tragen

3. Transport und Lagerung

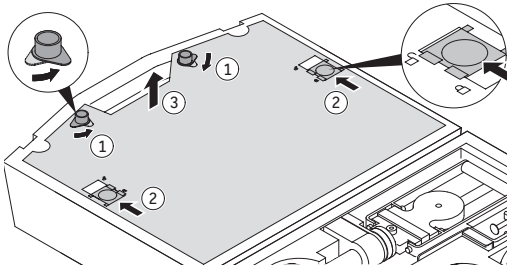
Das Installationswerkzeug der COOL-FIT Einschweiss-Nippel, sowie die einzelnen Werkzeugteile müssen im Originalkoffer gelagert und transportiert werden.

4. Übersicht Werkzeugkoffer

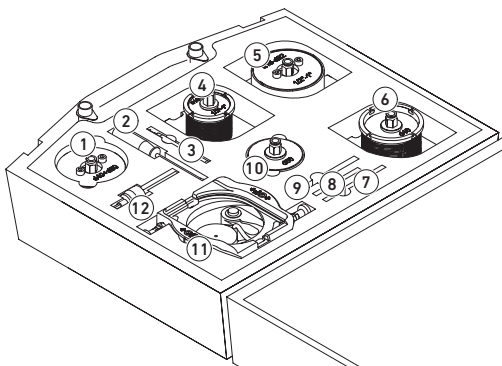


Unterseite

1. Schweißgerät
2. Ratsche, Innensechskantschlüssel und Temperaturstifte
3. Schweißgeräthalter
4. Heizelemente d40
5. Heizelemente 1/2"-1", d16-d32
6. Heizelemente d50
7. Fittinghalter d50
8. Fittinghalter 1/2"-2", d16-32
9. Fittinghalter d40, Timer und Ersatzschrauben für Heizelemente



Trennung entriegeln



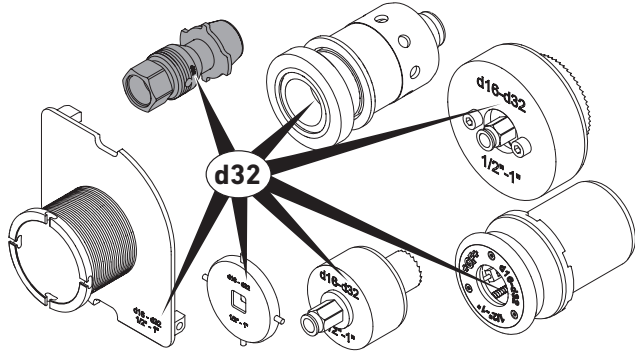
Oberseite

1. Lochsäge 40+50
2. Schraubendreher
3. Handentgrater
4. Medienrohrzentrierhilfe 1/2"-1", d16-d32 + Lochsäge 1/2"-1", d16-d32
5. Mantelrohrzentrierhilfe + Lochsäge Mantelrohr 1/2"-1", d16-d32
6. Medienrohrzentrierhilfe 40+50 Lochsäge d50
7. Adapter Gewindehülse 40+50
8. Adapter Gewindehülse 1/2"-1", d16-d32
9. Markierstift
10. Lochsäge d40
11. Grundplatte
12. Bohradapter

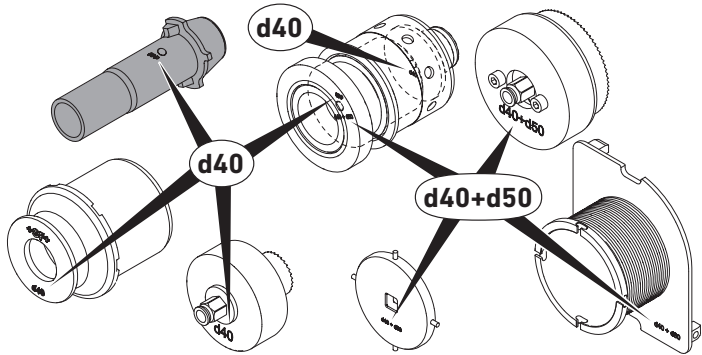
5. Übersicht Komponenten pro Fittings-Dimension

1/2" - 1",
d16 - d32

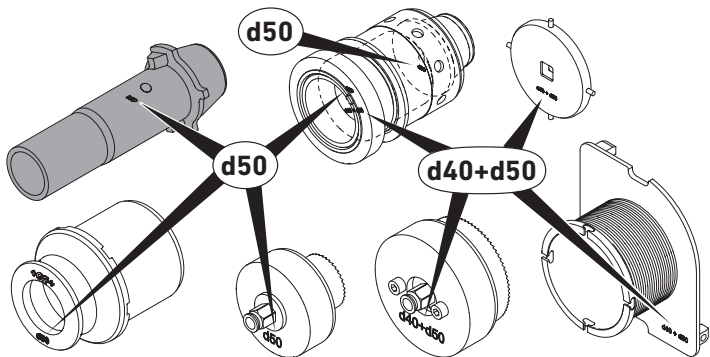
DE



d40

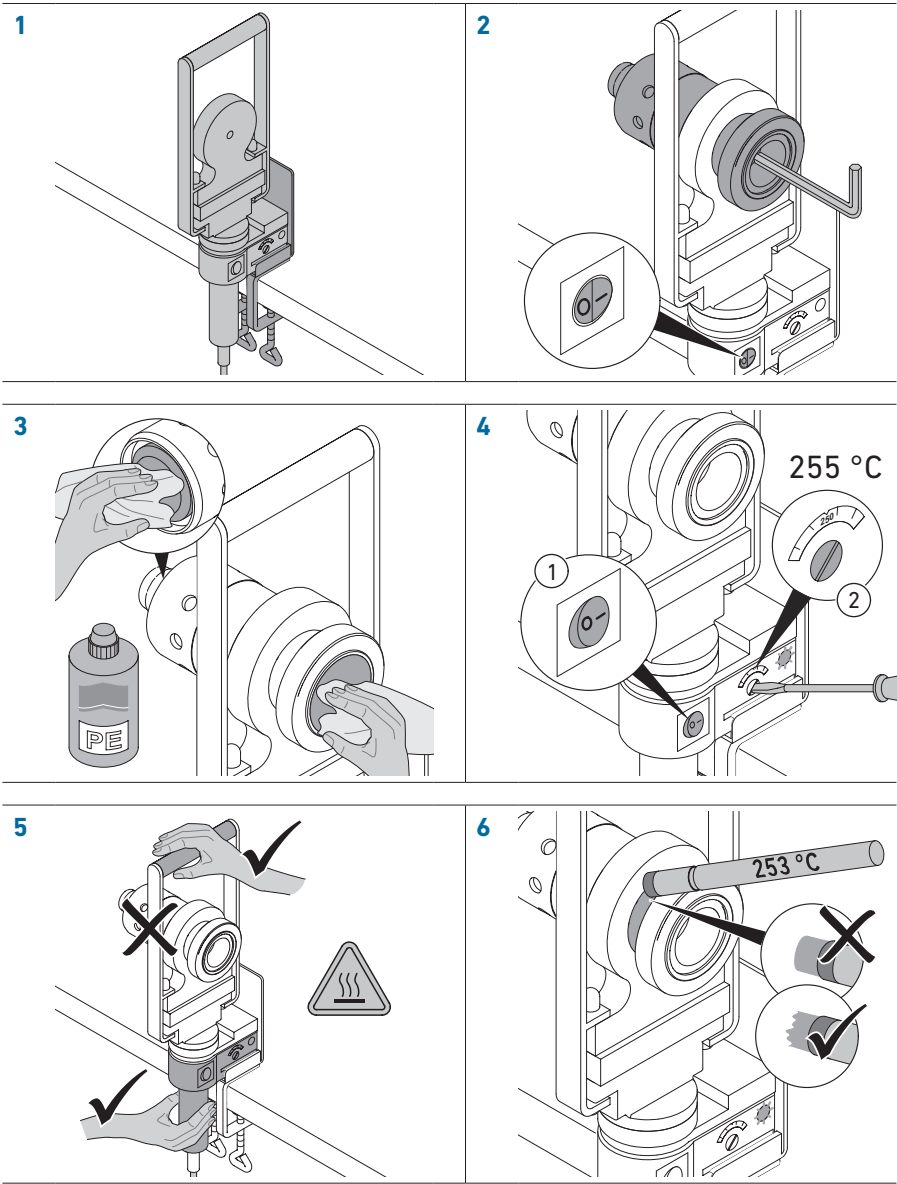


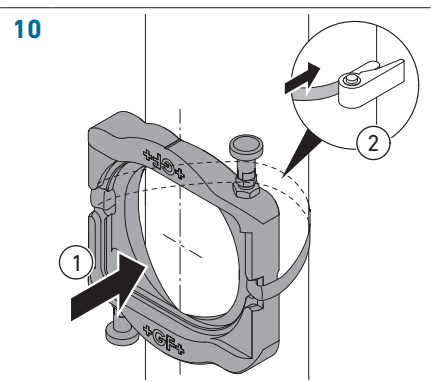
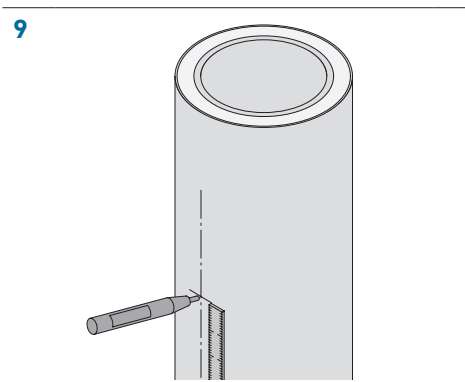
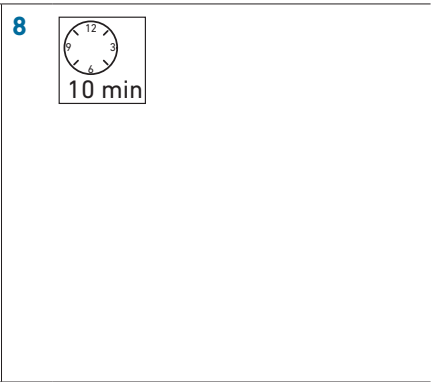
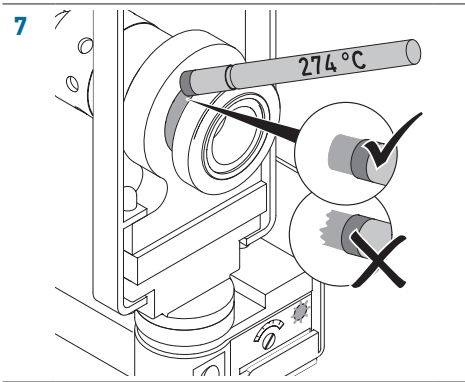
d50



6. Vorbereitung

DE

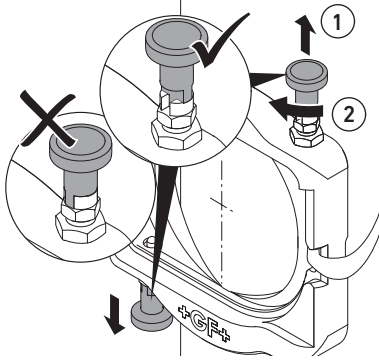




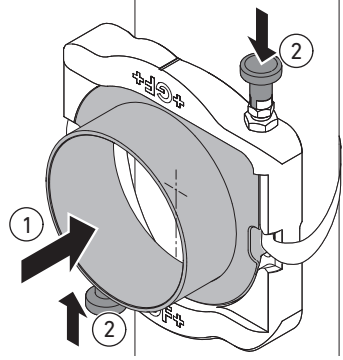
7. Bohren

DE

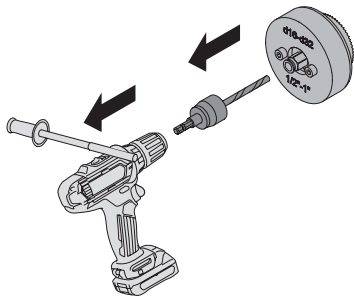
1



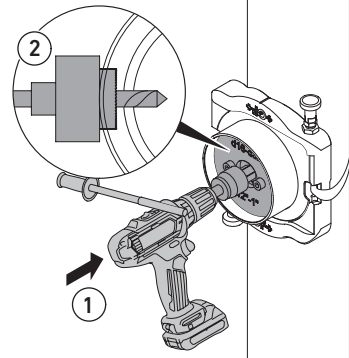
2



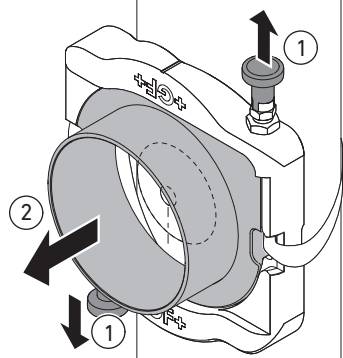
3



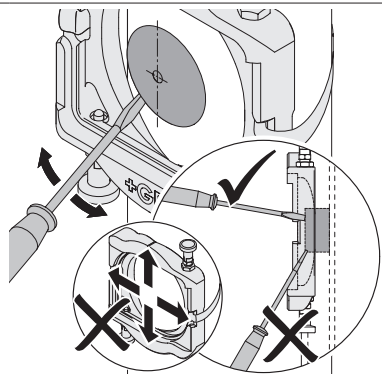
4

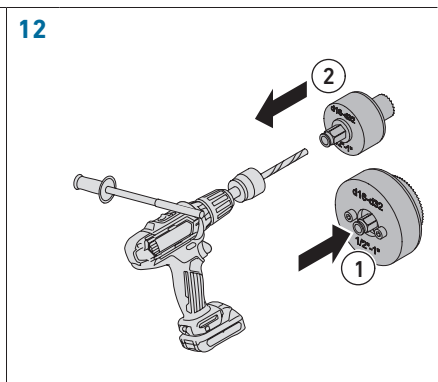
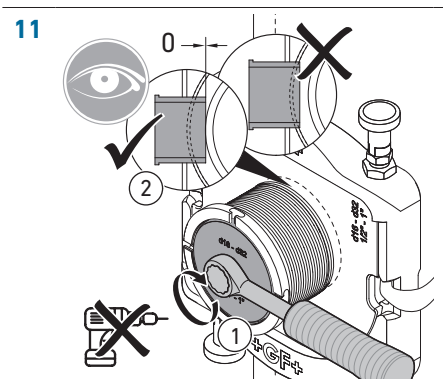
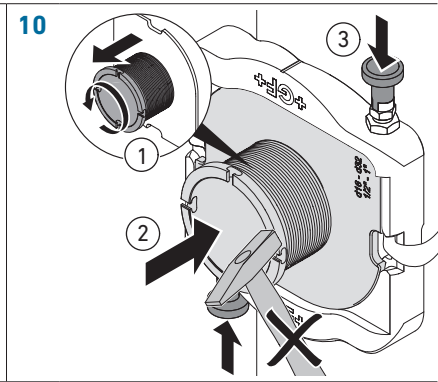
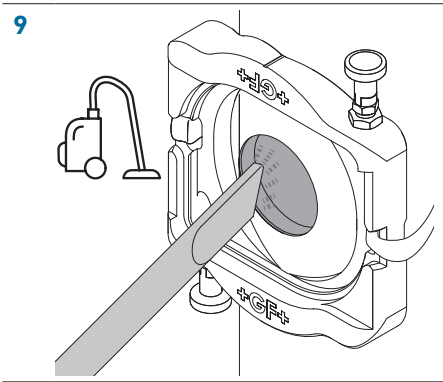
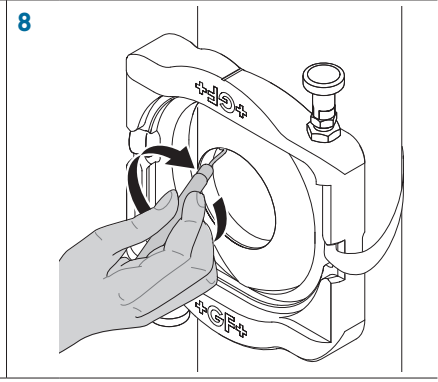
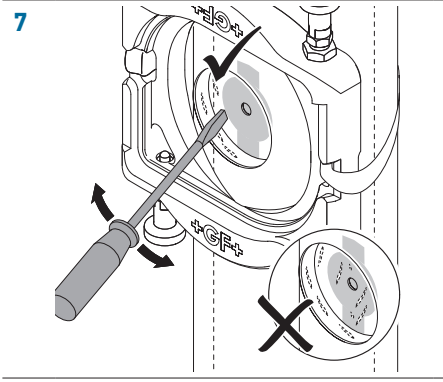


5

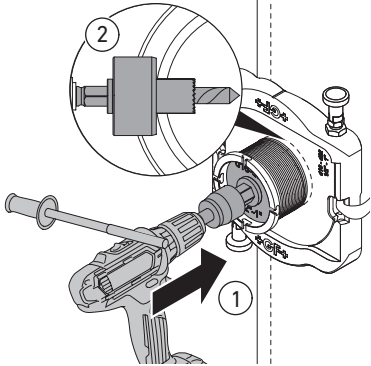


6

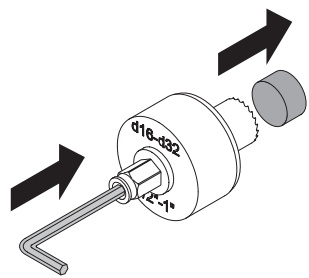




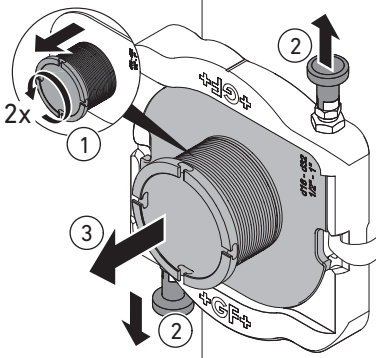
13



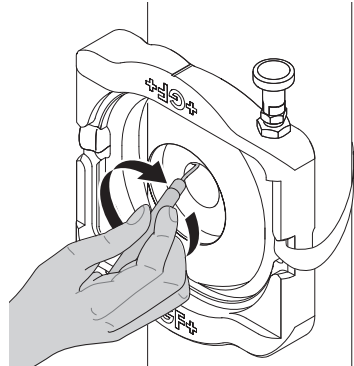
14



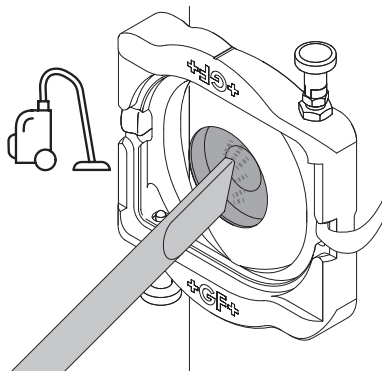
15



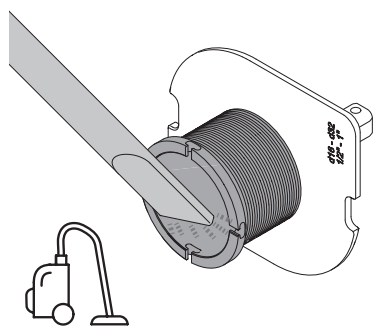
16



17

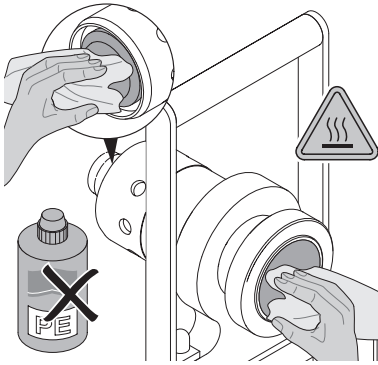


18

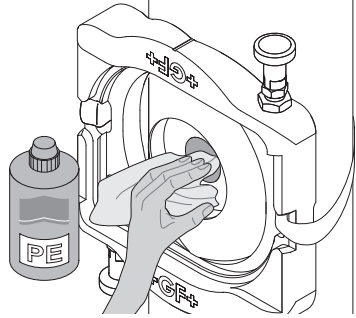


8. Schweißen

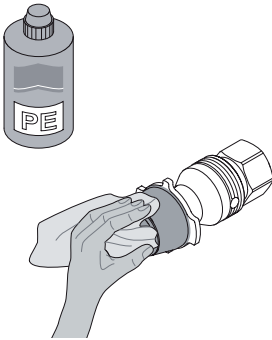
1



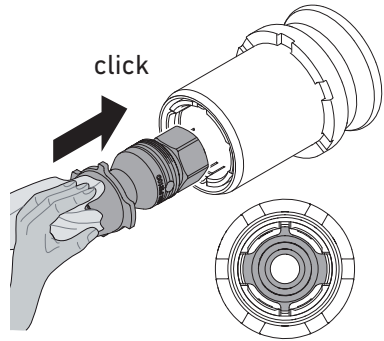
2



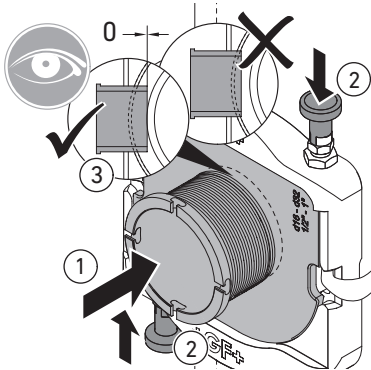
3



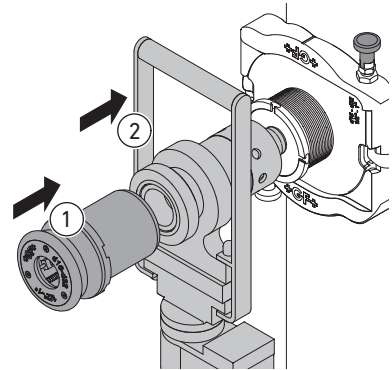
4



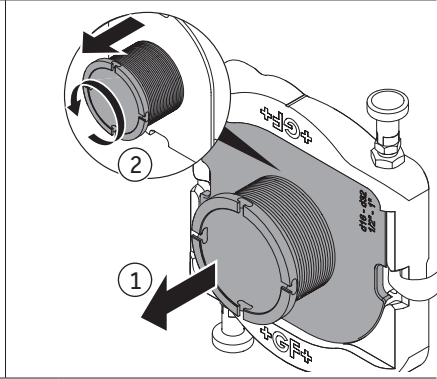
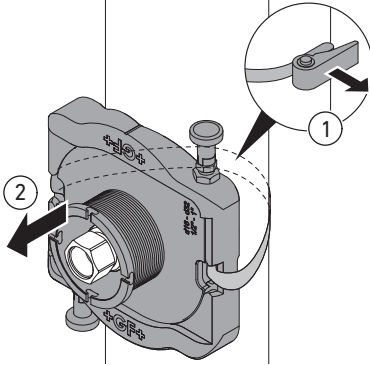
5



6



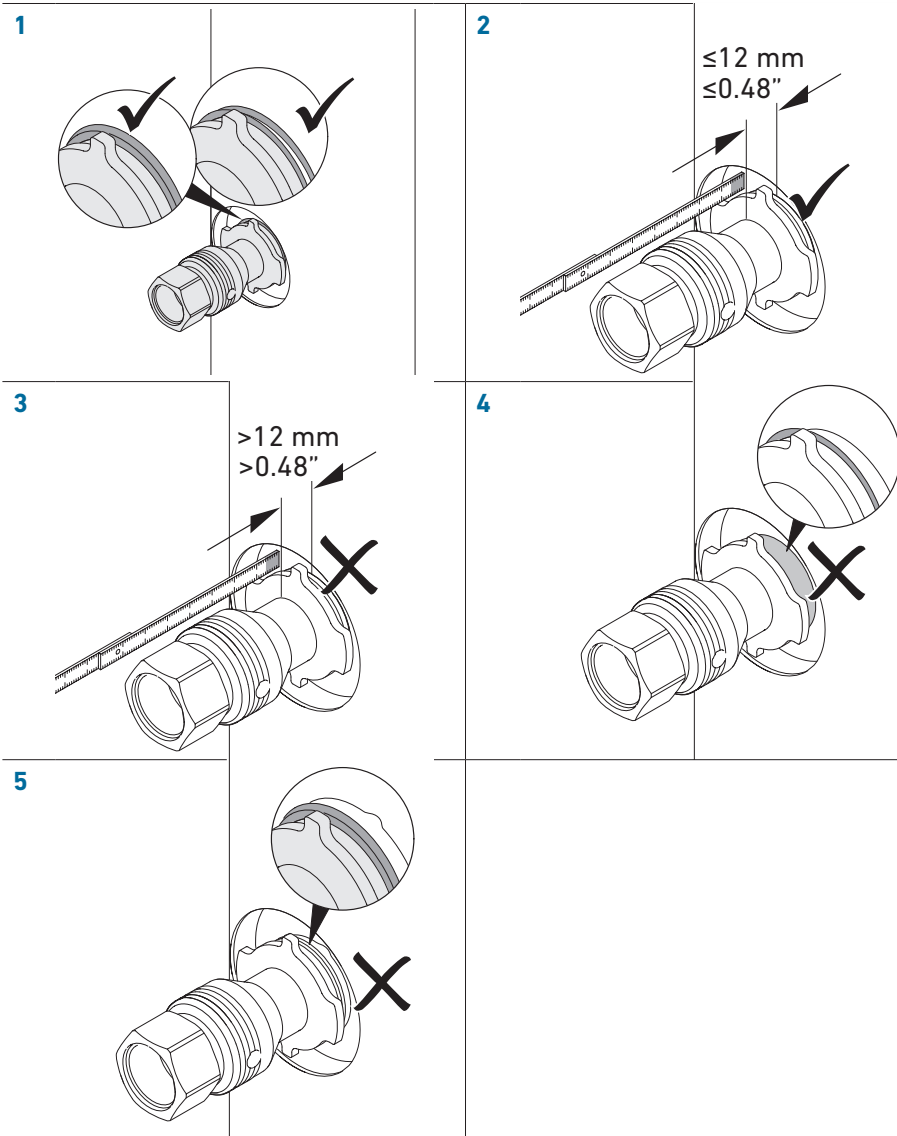
13



DE

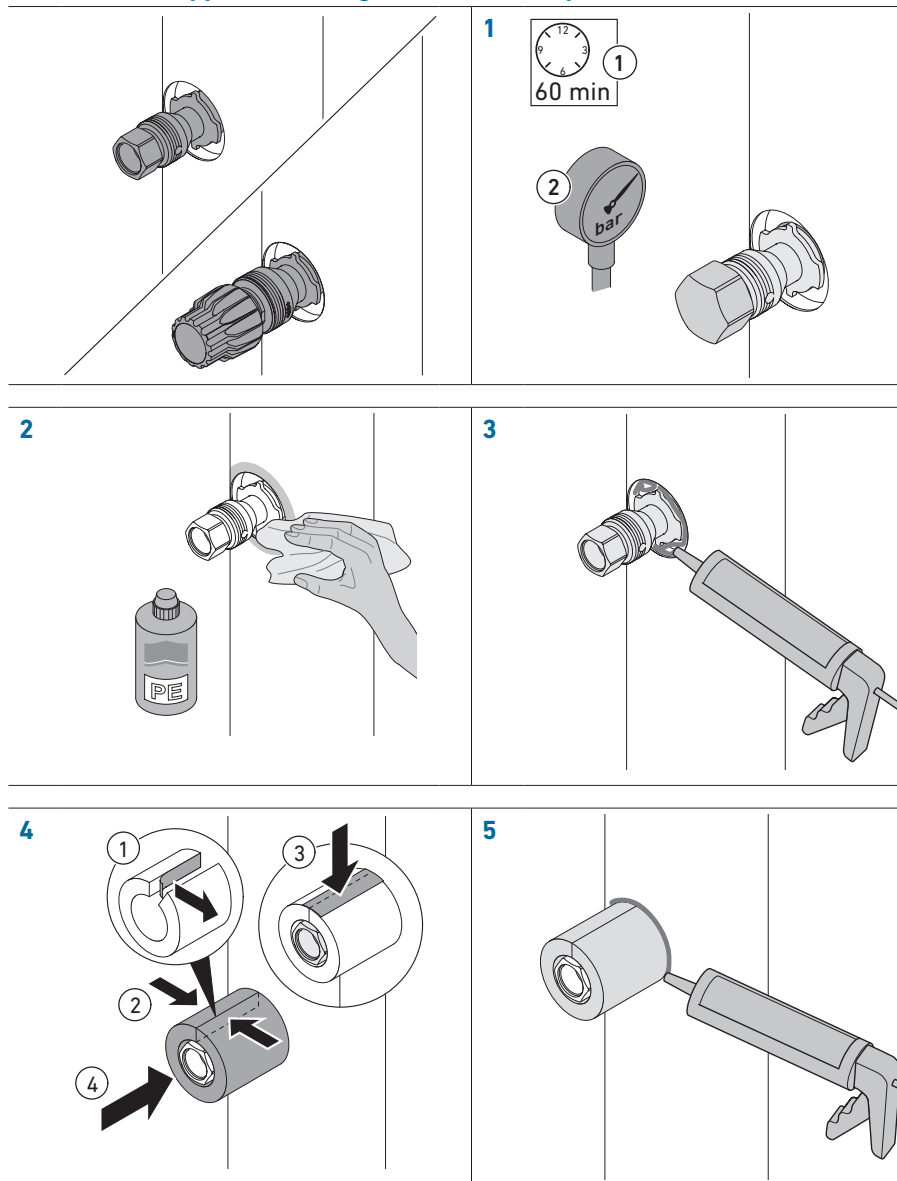
9. Schweißnahtkontrolle

DE

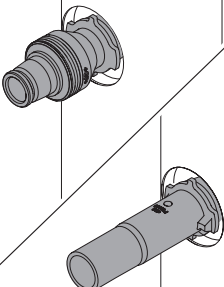
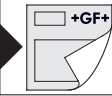


10. Dämmung anbringen

Einschweiss-Nippel mit Innengewinde und Sanipex MT



Einschweiss-Nippel PE/iFIT und PE Stutzen

| | |
|---|--|
|  | <p style="text-align: center;">1</p> <div style="display: flex; align-items: center;">  <div style="margin-left: 10px;"> <p>Montageanleitung Einschweiss-Nippel beachten (Beiliegend dem Fitting).</p> </div> </div> |
|---|--|

11. Hilfe bei Problemstellungen

6.2: Heizelemente lassen sich nicht auf Schweissgerät fixieren

| Mögliche Ursache | Abhilfe |
|----------------------------------|---|
| Verwendung von falscher Schraube | Verwendung von korrekter Schraube: Heizelemente d32 - Länge 110mm Heizelemente d40/50 - Länge 120mm |
| Heizelemente beschädigt | Heizelemente ersetzen |

6.6: Temperaturstift 253°C schmilzt nicht auf

| Mögliche Ursache | Abhilfe |
|---|---|
| Schweisstemperatur an Schweissgerät zu gering eingestellt | Schweisstemperatur an Schweissgerät auf 255°C einstellen |
| Schweisgerät heizt noch auf | Einige Minuten warten und Schweisstemperatur erneut kontrollieren |
| Schweisgerät defekt | GF kontaktieren |

6.7: Temperaturstift 274°C schmilzt auf

| Mögliche Ursache | Abhilfe |
|--|---|
| Schweisstemperatur an Schweißgerät zu hoch eingestellt | Schweisstemperatur an Schweißgerät auf 255°C einstellen |
| Schweißgerät defekt | GF kontaktieren |

7.2: Mantelrohrzentrierhilfe lässt sich nicht korrekt auf Grundplatte montieren, und Rastbolzen rastet nicht ein

| Mögliche Ursache | Abhilfe |
|---|---|
| Spanngurt ist nach innen um die Grundplatte geführt, und blockiert den korrekten Sitz der Zentrierhilfe | Grundplatte lösen und Spanngurt nach aussen um die Grundplatte führen |
| Rastbolzen verunreinigt | Rastbolzen mit Druckluft oder Staubsauger reinigen |

7.3; 7.12: Bohradapter lässt sich nicht mit den COOL-FIT Lochsägen verbinden

| Mögliche Ursache | Abhilfe |
|------------------------------------|---|
| Späne und Dämmreste in Adapter | Adapter mit Druckluft oder Staubsauger reinigen |
| PE Rohrstück in Lochsäge vorhanden | Entfernen des PE Rohrstücks mit Innensechskantschlüssel |

7.10; 8.5: Medienrohrzentrierhilfe lässt sich nicht korrekt auf Grundplatte montieren und Rastbolzen rastet nicht ein

| Mögliche Ursache | Abhilfe |
|--------------------------------------|---|
| Gewindehülse steht auf Medienrohr an | Gewindehülse wenige Umdrehungen im Gegenuhrzeigersinn in obere Position bringen |
| Rastbolzen verunreinigt | Rastbolzen mit Druckluft oder Staubsauger reinigen |

8.4: Fitting lässt sich nicht in Fittinghalter fixieren

| Mögliche Ursache | Abhilfe |
|-------------------------------------|---|
| Fitting nicht korrekt ausgerichtet | Kragen des Fittings in Übereinstimmung mit der Fixierung des Fittinghalters bringen und Fitting einrasten |
| Fixierung des Fittinghalters defekt | Fittinghalter ersetzen |

12. Ersatzteilliste

| Artikelnummer | Beschreibung |
|---------------|---|
| 799738331 | Handschweißgerät 230V |
| 799738332 | Handschweißgerät 110V |
| 799738340 | Heizelement Kit d32 |
| 799738341 | Heizelement Kit d40 |
| 799738342 | Heizelement Kit d50 |
| 799738343 | Grundplatte |
| 799738345 | Rastbolzen |
| 799738346 | Mantelrohrzentrierhilfe |
| 799738347 | Medienrohrzentrierhilfe 1/2"-1", d16-d32 |
| 799738348 | Medienrohrzentrierhilfe d40+d50 |
| 799738349 | Führungshülse 1/2"-1", d16-d32 |
| 799738350 | Führungshülse d40+d50 |
| 799738351 | Adapter Führungshülse 1/2"-1", d16-d32 |
| 799738352 | Adapter Führungshülse d40+d50 |
| 799738353 | Ratschenschlüssel |
| 799738354 | Schraubendreher |
| 799738355 | Lochsäge Mantelrohr 1/2"-1", d16-d32 |
| 799738356 | Lochsäge Mantelrohr d40+d50 |
| 799738357 | Lochsäge Medienrohr d32 |
| 799738358 | Lochsäge Medienrohr d40 |
| 799738359 | Lochsäge Medienrohr d50 |
| 799738360 | Adapter Bohrmaschine |
| 799738361 | Fittinghalter d32 |
| 799738362 | Fittinghalter d40 |
| 799738363 | Fittinghalter d50 |
| 799738364 | Halterung Schweißgerät |
| 799738365 | Innensechskantschlüssel |
| 799738366 | Zylinderschraube 110mm (für Heizelement 1/2"-1", d16-d32) |
| 799738367 | Zylinderschraube 120mm (für Heizelement 40+50) |
| 790114028 | Timer |
| 761066796 | Temperaturstift 253°C |
| 761066797 | Temperaturstift 274°C |

| | |
|-----------|--------------|
| 799350344 | Markierstift |
| 790205082 | Entgrater |

13. Entsorgung

Bei der Entsorgung muss Folgendes beachtet werden:

- ▶ Vor der Entsorgung die einzelnen Materialien nach recycelbaren Stoffen, Normalabfall und Sonderabfall trennen.
- ▶ Örtliche und länderspezifische Vorschriften, Bestimmungen und Normen beachten und einhalten.

Contents

| | |
|---|-----------|
| 1. Important information | 26 |
| 1.1 Scope of delivery | 26 |
| 1.2 Additionally required tools | 26 |
| 1.3 Applicable documents | 26 |
| 1.4 Signs and symbols | 26 |
| 2. Safety | 26 |
| 2.1 Intended use | 26 |
| 2.2 Target group and qualification | 27 |
| 2.3 Safety information..... | 27 |
| 3. Transport and storage | 27 |
| 4. Overview toolbox | 28 |
| 5. Overview components per fittings dimension..... | 29 |
| 6. Preparation..... | 30 |
| 7. Drilling | 32 |
| 8. Welding | 35 |
| 9. Weld bead inspection..... | 38 |
| 10. Mount insulation..... | 39 |
| 11. Troubleshooting | 40 |
| 12. Spare parts list..... | 42 |
| 13. Disposal | 43 |

1. Important information

1.1 Scope of delivery

The scope of delivery of the COOL-FIT weld-in port installation tool includes the following:

- Tool incl. components for branching dimensions ½"-1", d16-d32
- Components d40+d50 (optional)
- Installation instructions COOL-FIT weld-in port

1.2 Additionally required tools

The following tools and materials are also required:

- Electric drill driver ≥ 12 Nm, e.g. Makita DDF481, 18V, stage 1: 0-550 min⁻¹, with additional holder perpendicular to the drilling axis
- Vacuum cleaner
- Tangit PE cleaner
- Lint-free, unprinted cloths
- Disposable gloves
- Cartridge press
- GF sealing compound (GF code 738011103)




1.3 Applicable documents

The following documents are part of the product and must be observed:

- GF Planning Fundamentals COOL-FIT 2.0 / COOL-FIT 4.0

You can obtain the documents from your GF representative or at www.gfps.com.

1.4 Signs and symbols

| Symbol | Meaning |
|---|--|
|  | Action required |
|  | Carry out visual inspection (e.g. of the pipe) |
|  | Observe assembly instructions for weld-in port |

2. Safety

The installation instructions are part of the GF product and must be read carefully before assembly. The installation instructions must be available at all times.

2.1 Intended use

The COOL-FIT installation tool for weld-in ports is designed to install branches using the COOL-FIT weld-in ports, on unfilled and dry COOL-FIT 2.0, COOL-FIT 2.0F, COOL-FIT 4.0 and COOL-FIT 4.0F pipes in dimensions d63-d225.

2.2 Target group and qualification

The installation tool may only be used by professionals who are regularly trained in occupational safety and environmental protection on pressurized pipelines and have been trained in the use of the installation tool for weld-in ports.

2.3 Safety information

Damage to property

An incorrectly installed piping system may cause damage to property.

- ▶ Observe installation instructions for COOL-FIT weld-in port.
- ▶ Due to rotating and hot parts, a safety distance of 1m must be kept from bystanders.
- ▶ Due to the risk of falling when handling the installation tool, use on ladders is prohibited and the use of lifting platforms is recommended.
- ▶ In case of overhead installation, the area below the installation point must be kept free from bystanders.

Violation of local and country-specific regulations, guidelines and standards can cause damage.

Personal clothing

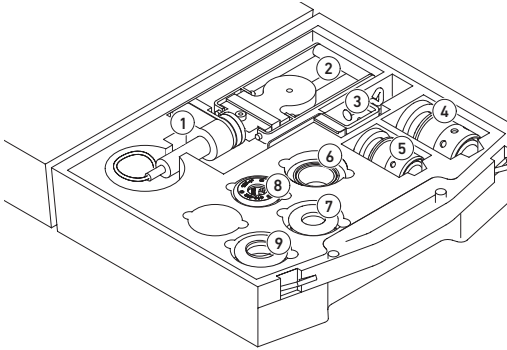
To avoid injury, the following is recommended:

- Wear tight clothes
- Remove jewelry
- Wear safety glasses
- Wear hair net if necessary
- Wear cut-resistant gloves
- Wear safety shoes
- Wear helmet

3. Transport and storage

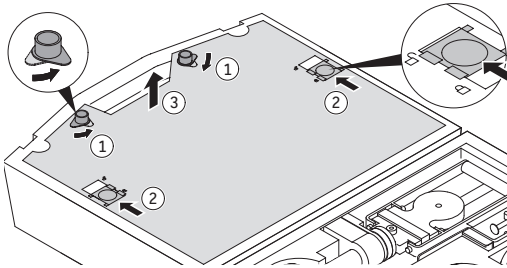
The installation tool of the COOL-FIT weld-in ports, as well as the individual tool parts, must be stored and transported in the original case.

4. Overview toolbox

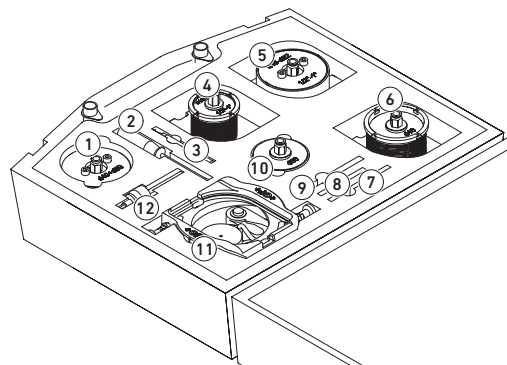


Bottom side

1. Fusion device
2. Ratchet, hexagon socket allen key and tempil sticks
3. Holder for fusion device
4. Heating elements d40
5. Heating elements 1/2"-1", d16-d32
6. Heating elements d50
7. Fitting holder d50
8. Fitting holder 1/2"-2", d16-32
9. Fitting holder d40, Timer and spare screws for heating elements



Unlock separation

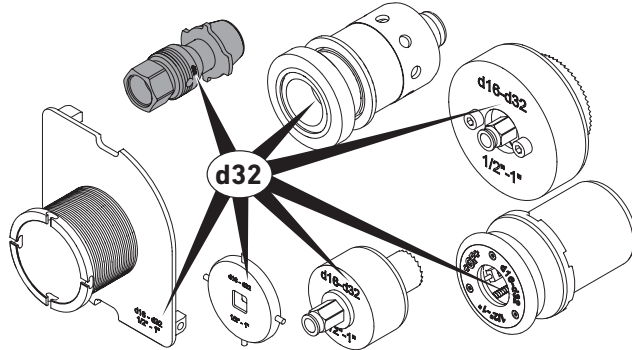


Top side

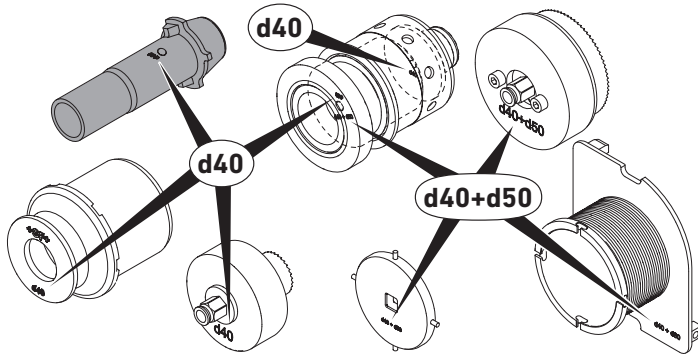
1. Hole saw 40+50
2. Screw driver
3. Deburring tool
4. Centering aid inner pipe 1/2"-1", d16-d32 + hole saw 1/2"-1", d16-d32
5. Centering aid jacket pipe + hole saw jacket pipe 1/2"-1", d16-d32
6. Centering aid inner pipe 40+50 hole saw d50
7. Adapter guiding sleeve 40+50
8. Adapter guiding sleeve 1/2"-1", d16-d32
9. Marker
10. Hole saw d40
11. Base plate
12. Drilling adapter

5. Overview components per fitting dimension

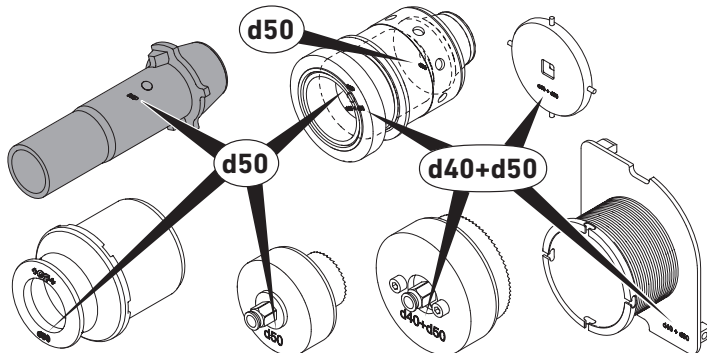
1/2" - 1",
d16 - d32



d40

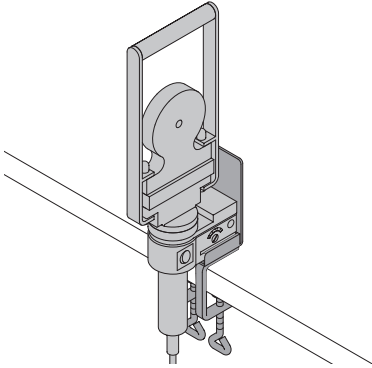


d50

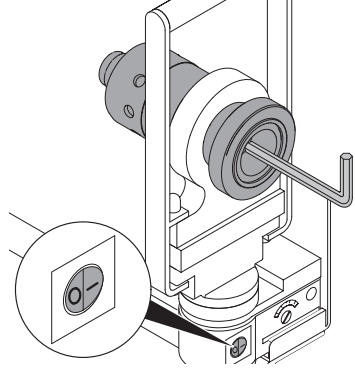


6. Preparation

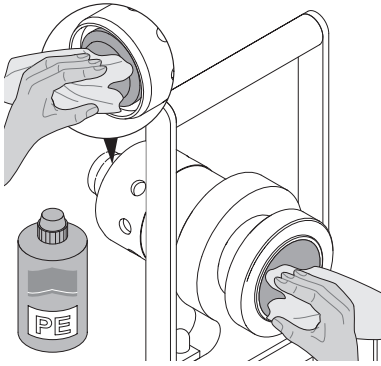
1



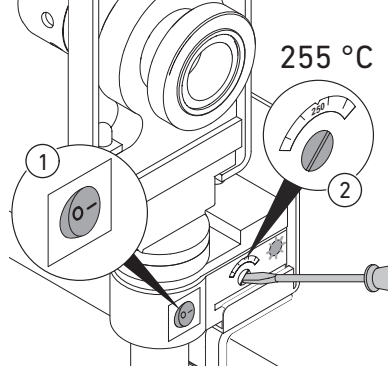
2



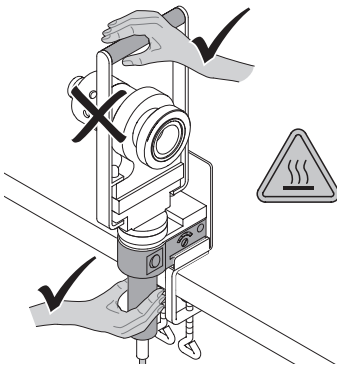
3



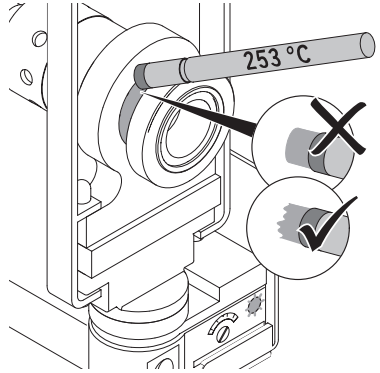
4



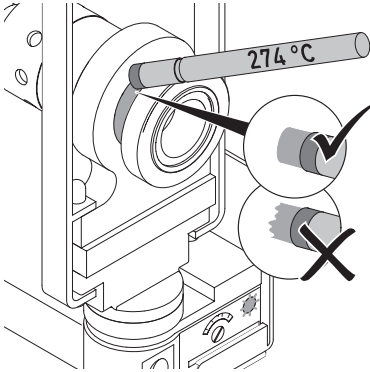
5



6



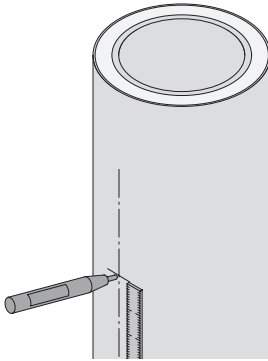
7



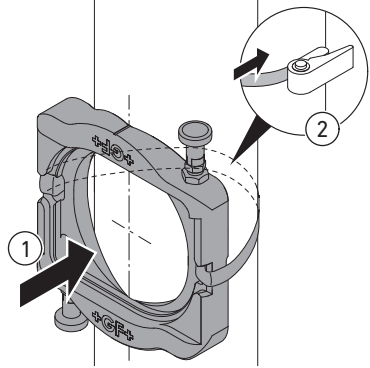
8



9

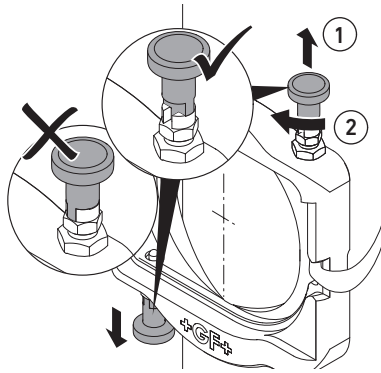


10

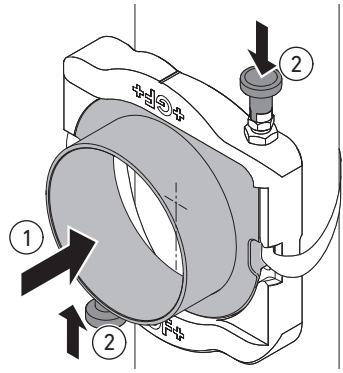


7. Drilling

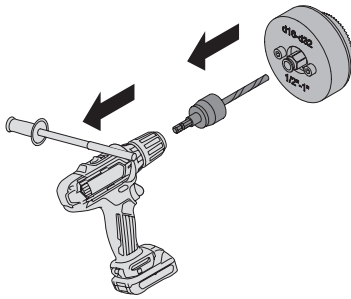
1



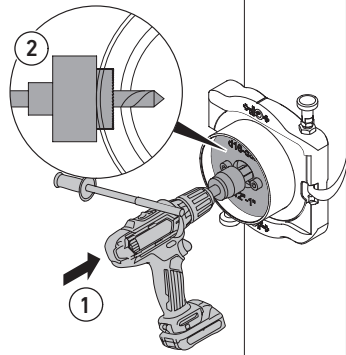
2



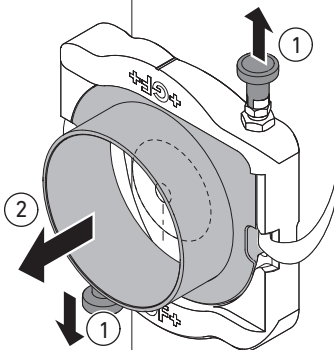
3



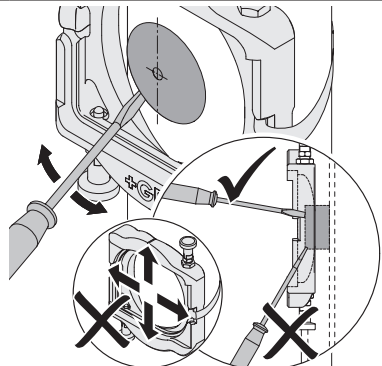
4

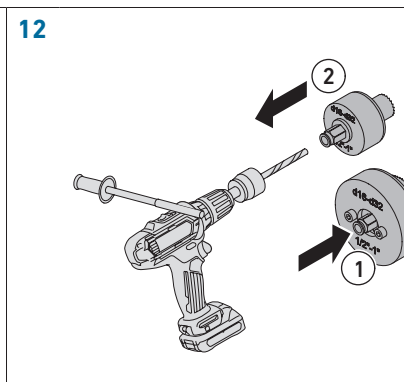
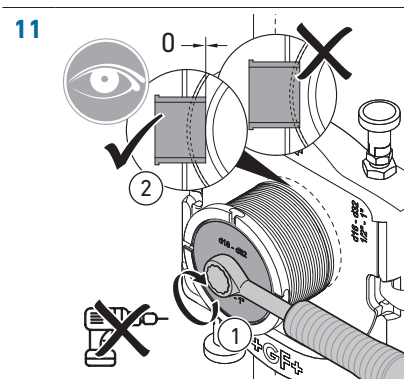
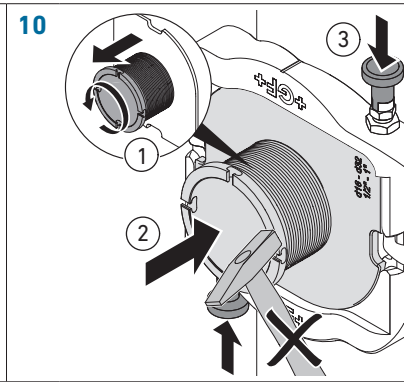
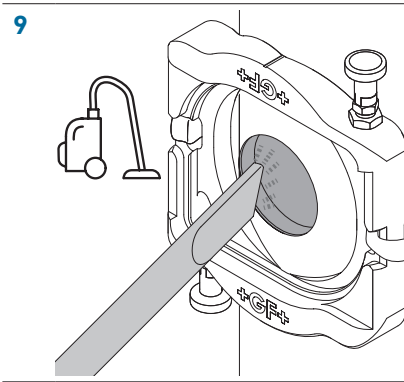
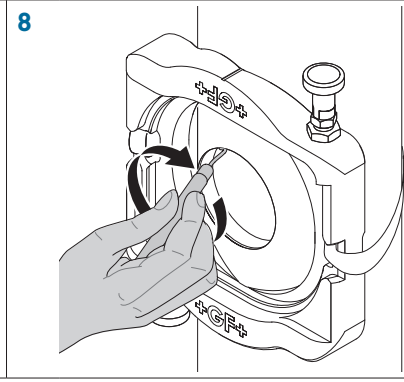
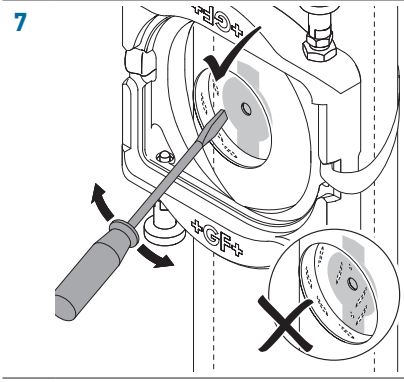


5

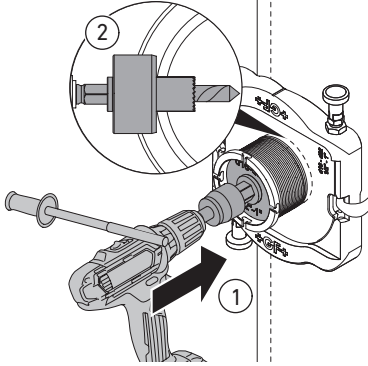


6

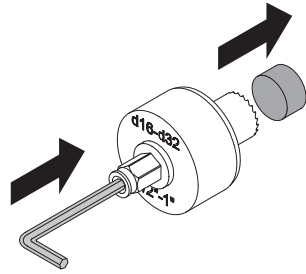




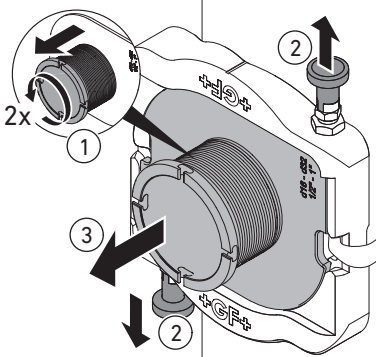
13



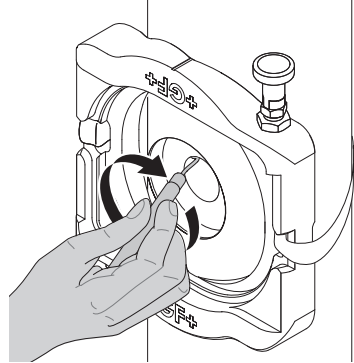
14



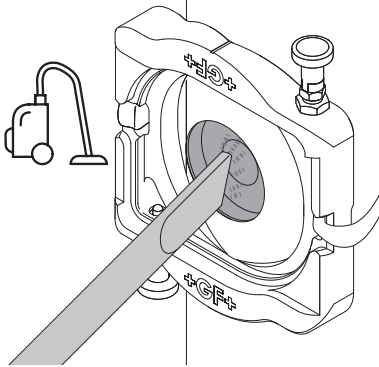
15



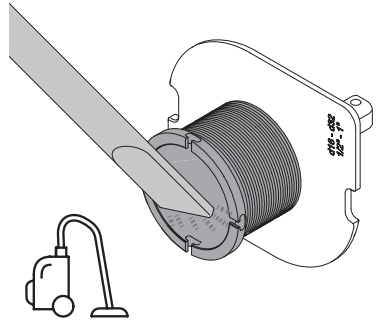
16



17



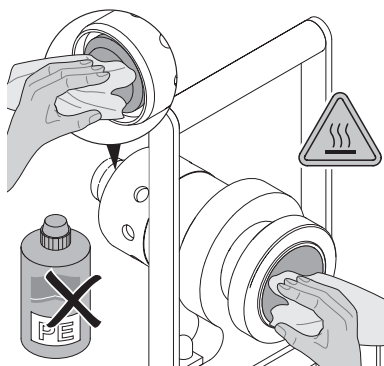
18



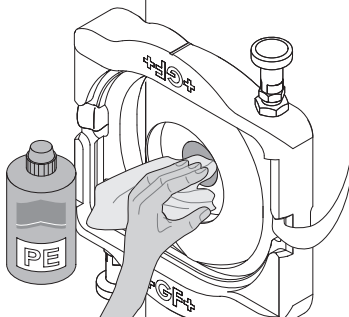
EN

8. Welding

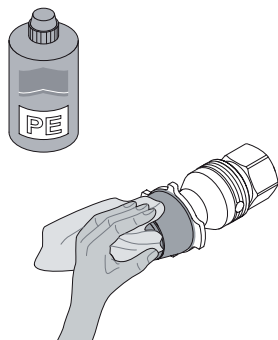
1



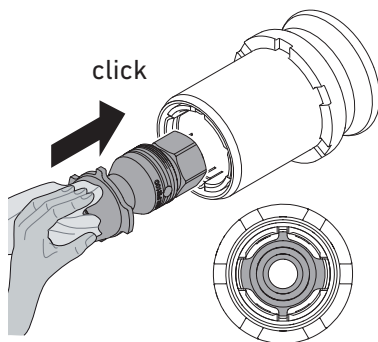
2



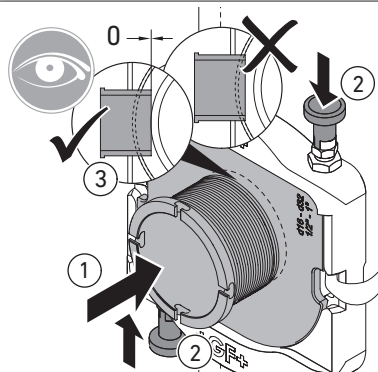
3



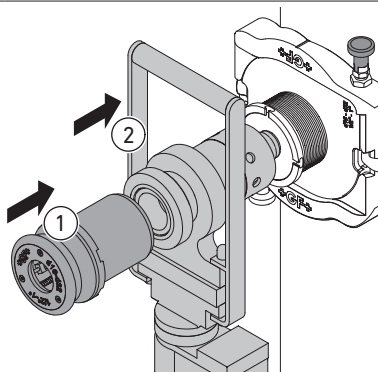
4



5

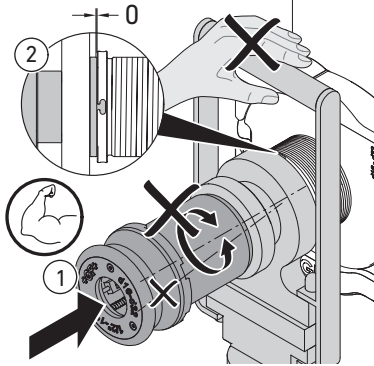


6

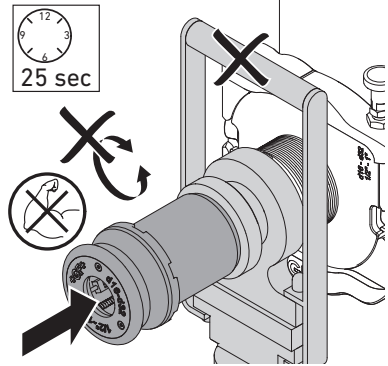


EN

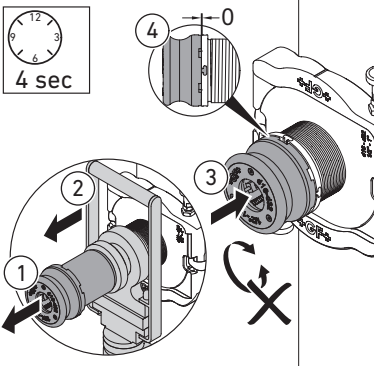
7



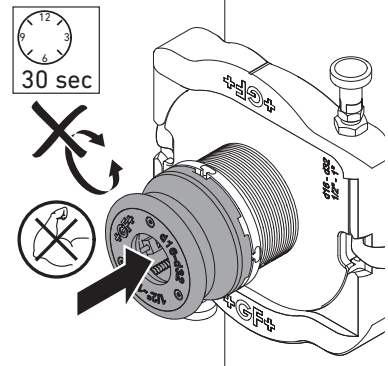
8



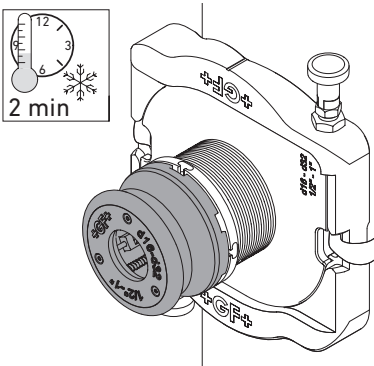
9



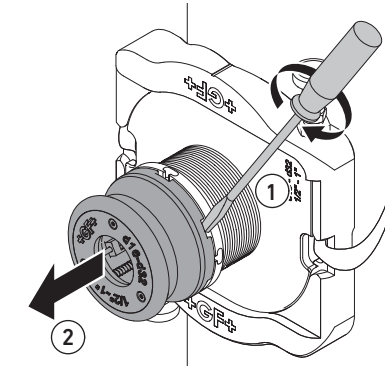
10



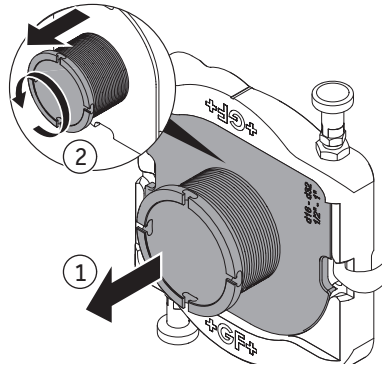
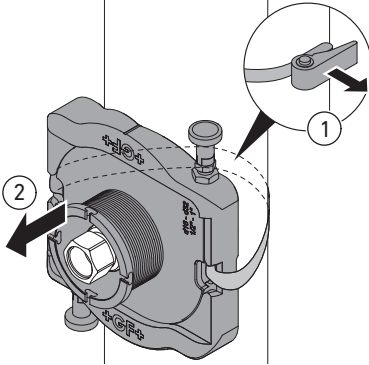
11



12



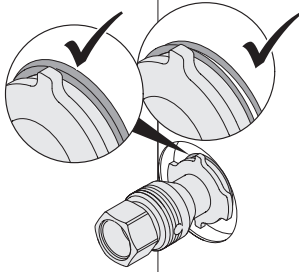
13



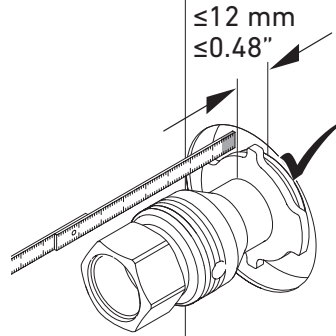
EN

9. Weld bead inspection

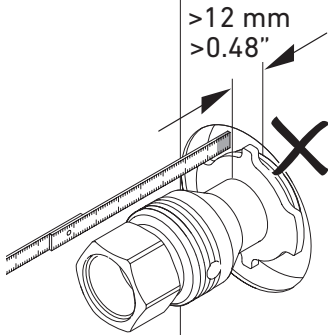
1



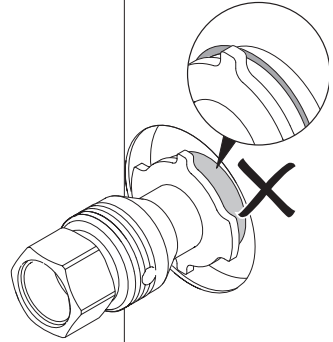
2



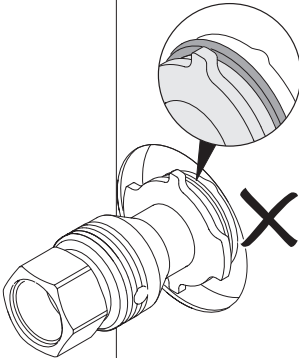
3



4

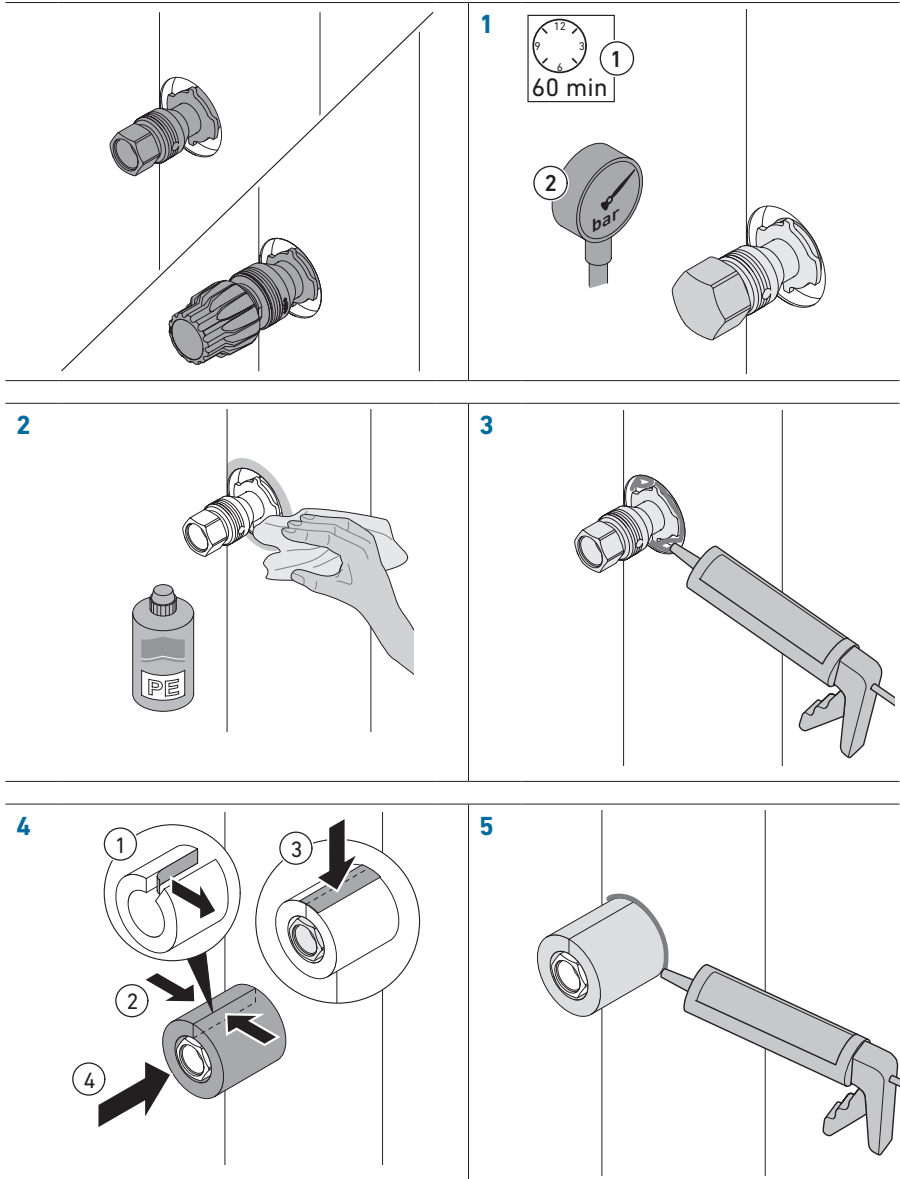


5

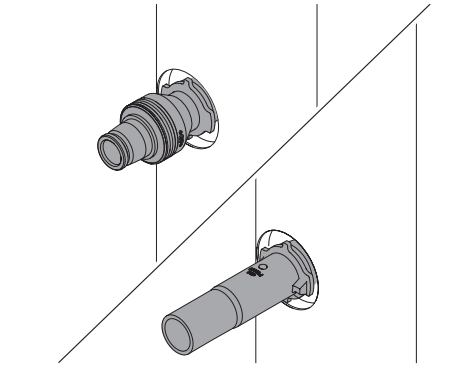


10. Mount insulation

Weld-in port with female thread and Sanipex MT



Weld-in port PE/iFIT and PE spigot



1



Observe the assembly instructions for the weld-in port (enclosed with the fitting).

EN

11. Troubleshooting

6.2: It's not possible to fix the heating elements on the fusion device

| Possible cause | Solution |
|-------------------------|---|
| Wrong screw is used | Use correct screw: Heating element d32 - length of screw 110mm Heating element d40/50 - length of screw 120mm |
| Heating element damaged | Replace heating element |

6.6: Tempil stick 253° not melting

| Possible cause | Solution |
|---|---|
| Fusion temperature set to too low value | Set fusion temperature to 255°C |
| Fusion device not heated up completely | Wait several minutes and check fusion temperature again |
| Fusion device damaged | Contact GF |

6.7: Tempil stick 274°C is melting

| Possible cause | Solution |
|--|---------------------------------|
| Fusion temperature set to too high value | Set fusion temperature to 255°C |
| Fusion device damaged | Contact GF |

7.2: Not possible to correctly mount centering aid for the jacket pipe and locking pin is not in end position

| Possible cause | Solution |
|---|---|
| Strap is routed towards the inside of the base plate, blocking the correct fit of the centering aid | Mount base plate again and route straps towards the outside of the base plate |
| Locking pin dirty | Clean locking pin with compressed air or vaccum cleaner |

7.3; 7.12: Not possible to connect the drilling adapter with the COOL-FIT hole saw

| Possible cause | Solution |
|---|--|
| Chips and foam residues block the adaptor | Clean the adaptor with compressed air or vaccum cleaner |
| PE pipe piece is blocking the hole saw | Remove the PE pipe piece on using the hexagon socket allen key |

7.10; 8.5: Not possible to correctly mount the centering aid for the inner pipe on the base plate and the locking pin is not in end position

| Possible cause | Solution |
|-----------------------------------|---|
| Guiding sleeve touches inner pipe | Turn guiding sleeves counterclockwise for a few turns |
| Locking pin dirty | Clean locking pin with compressed air or vaccum cleaner |

8.4: Not possible to mount the fitting into the fitting holder

| Possible cause | Solution |
|------------------------------------|---|
| Fitting in wrong orientation | Bring the collar of the fitting in the same orientation like the fixation of the fitting holder |
| Fixation of fitting holder damaged | Replace fitting holder |

EN

12. Spare parts list

| Article number | Description |
|----------------|---|
| 799738331 | Fusion device 230V |
| 799738332 | Fusion device 110V |
| 799738340 | Heating elements kit d32 |
| 799738341 | Heating elements kit d40 |
| 799738342 | Heating elements kit d50 |
| 799738343 | Base plate |
| 799738345 | Locking pin |
| 799738346 | Centering aid jacket pipe |
| 799738347 | Centering aid inner pipe 1/2"-1", d16-d32 |
| 799738348 | Centering aid inner pipe d40+d50 |
| 799738349 | Guiding sleeve 1/2"-1", d16-d32 |
| 799738350 | Guiding sleeve d40+d50 |
| 799738351 | Adaptor guiding sleeve 1/2"-1", d16-d32 |
| 799738352 | Adaptor guiding sleeve d40+d50 |
| 799738353 | Ratchet |
| 799738354 | Screw driver |
| 799738355 | Hole saw for jacket pipe 1/2"-1", d16-d32 |
| 799738356 | Hole saw for jacket pipe d40+d50 |
| 799738357 | Hole saw for inner pipe d32 |
| 799738358 | Hole saw for inner pipe d40 |
| 799738359 | Hole saw for inner pipe d50 |
| 799738360 | Drilling adaptor |
| 799738361 | Fitting holder d32 |
| 799738362 | Fitting holder d40 |
| 799738363 | Fitting holder d50 |
| 799738364 | Holder for fusion device |
| 799738365 | Hexagon socket allen key |
| 799738366 | Hexagon socket screw 110mm (for heating elements d32) |
| 799738367 | Hexagon socket screw 120mm (for heating elements 40+50) |
| 790114028 | Timer |
| 761066796 | Tempil stick 253°C |
| 761066797 | Tempil stick 274°C |
| 799350344 | Marker |

13. Disposal

The following must be observed during disposal:

- ▶ Before disposal, separate the individual materials according to recyclable materials, normal waste and hazardous waste.
- ▶ Observe and comply with local and country-specific regulations, provisions and standards.

Local support around the world

Visit our webpage to get in touch with your local specialist:
www.gfps.com/our-locations



The information and technical data (altogether "Data") herein are not binding, unless explicitly confirmed in writing.
The Data neither constitutes any expressed, implied or warranted characteristics, nor guaranteed properties or a guaranteed durability. All Data is subject to modification. The General Terms and Conditions of Sale of Georg Fischer Piping Systems apply.



738990030
MA_00151 01 (08.2023)
© Georg Fischer Piping Systems Ltd
CH-8201 Schaffhausen/Switzerland