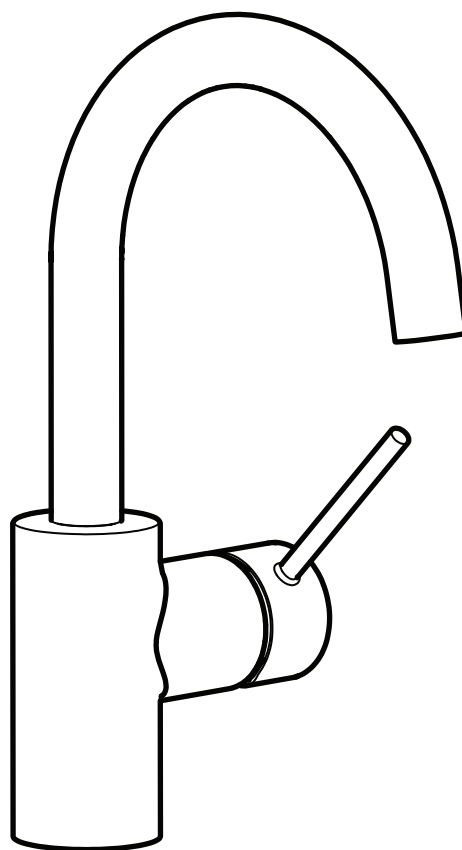
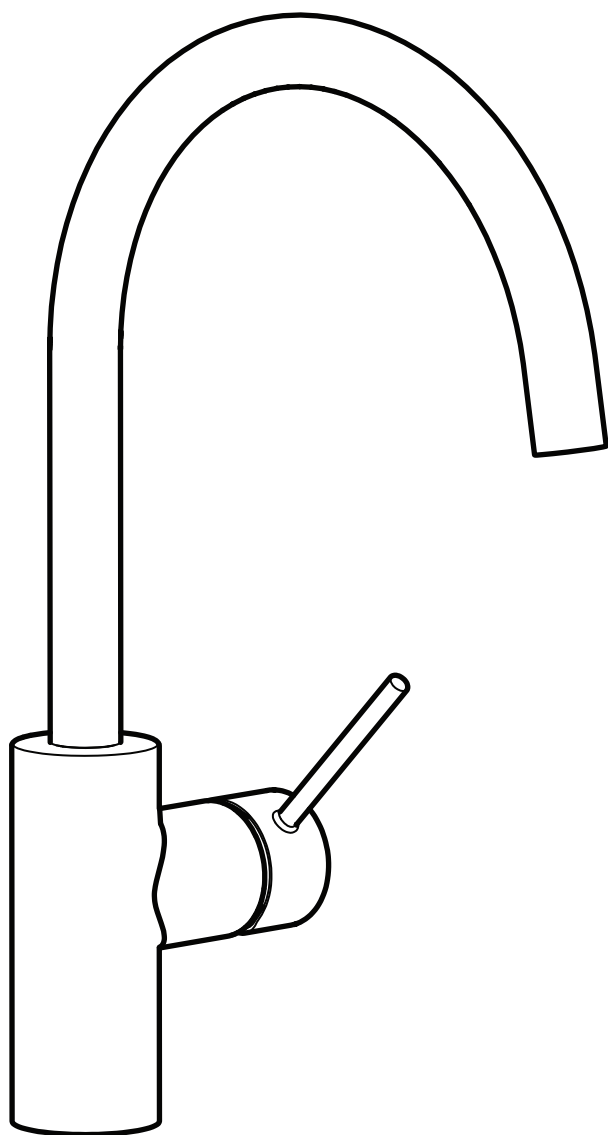


SALLSJÖN



Design and Quality
IKEA of Sweden

Svenska**Innehåll**

Verktyg och reservdelar	4
Montering av produkt	9
Illustration av produkt, delar och artikelnummer	14

English**Contents**

Tools and spare parts	4
Product assembly	9
Illustration of product, parts and part numbers	14



Svenska

Stäng av huvudkranen innan du byter blandare.

English

Switch off main shut-off valve before changing mixer tap.



Svenska

Installationen ska utföras i enlighet med branschreglerna Säker Vatteninstallation.

English

Installation shall be carried out in accordance with Industry Regulations Säker Vatteninstallation.



Accepterad
monteringsanvisning
2026:1



TG 32675



1913

EN 817 | EN 1717

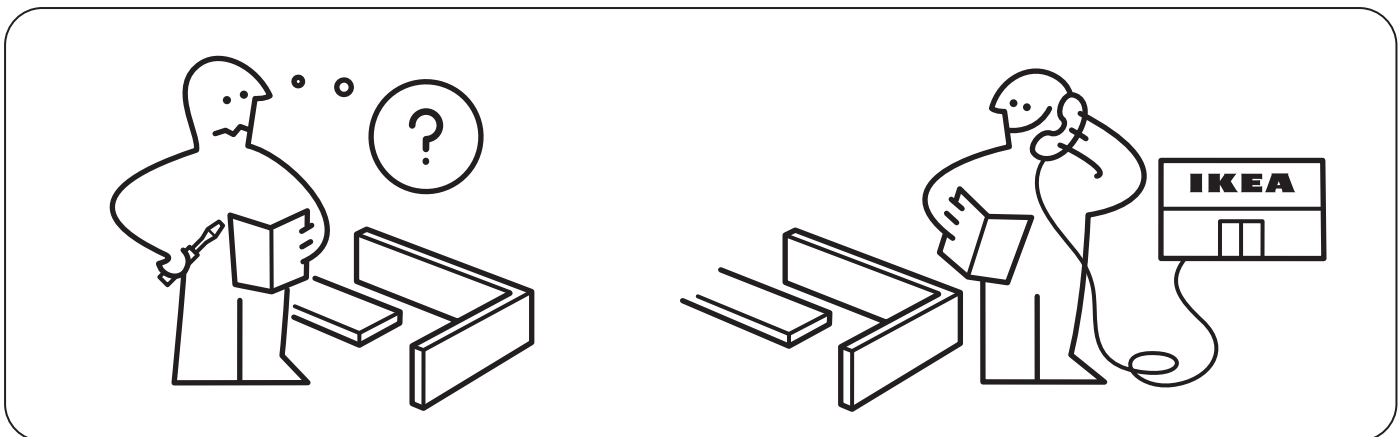
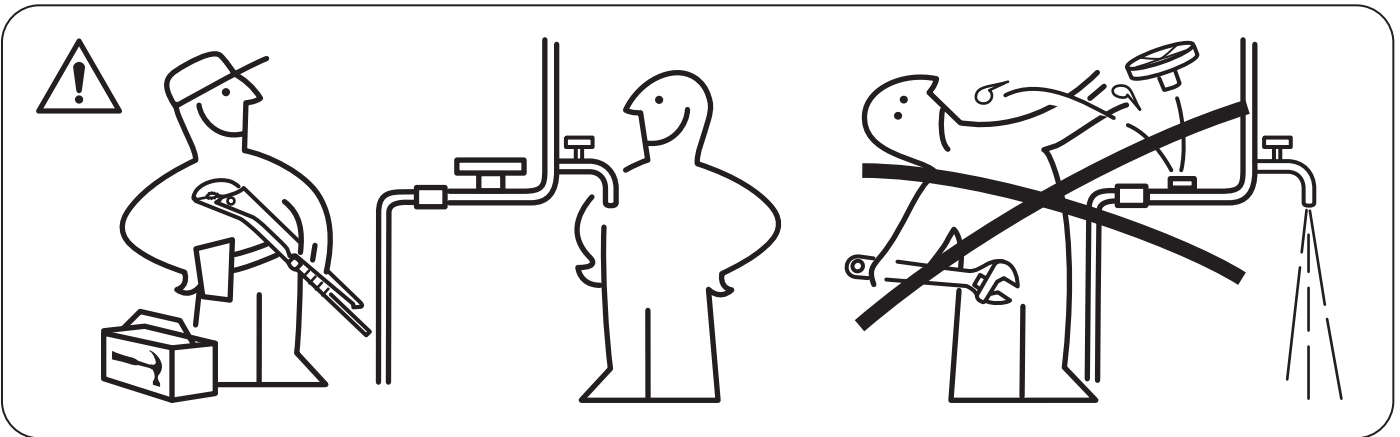
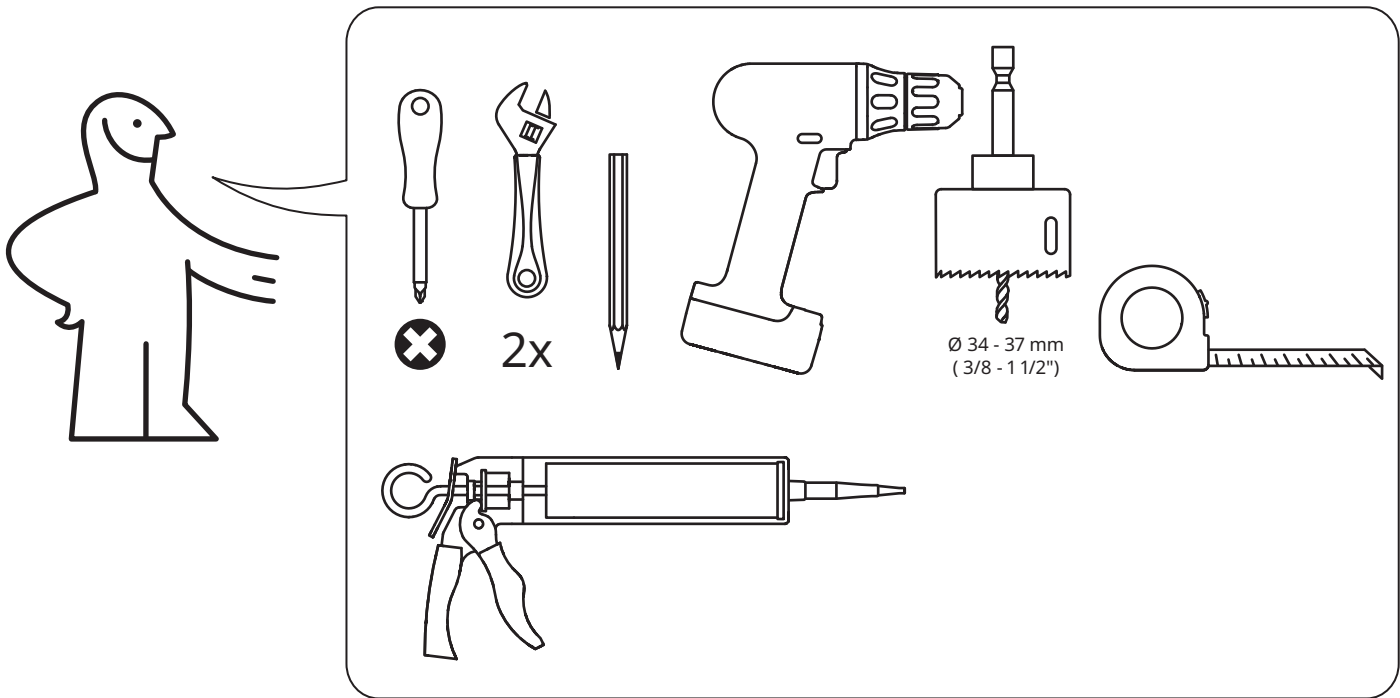
Svenska

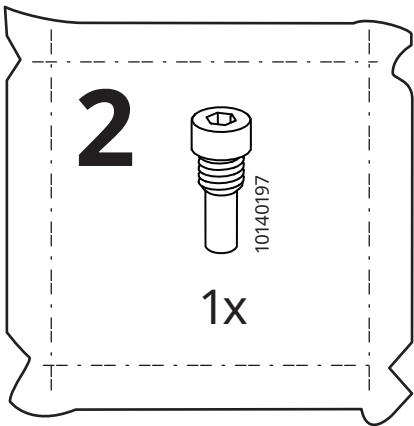
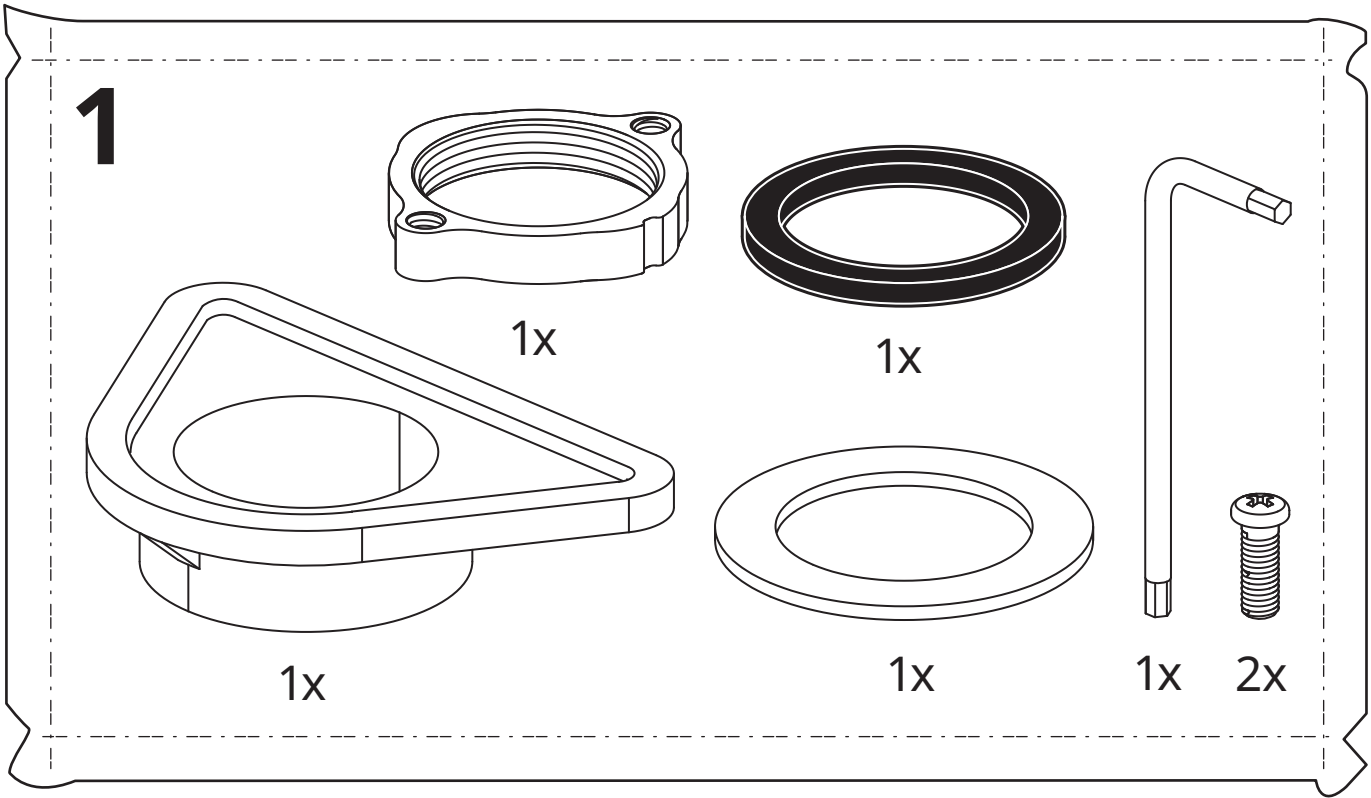
RSK Nr: 8312368, 8312369,
8312370, 8312371

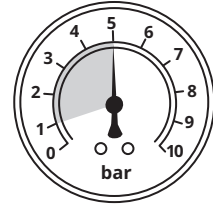
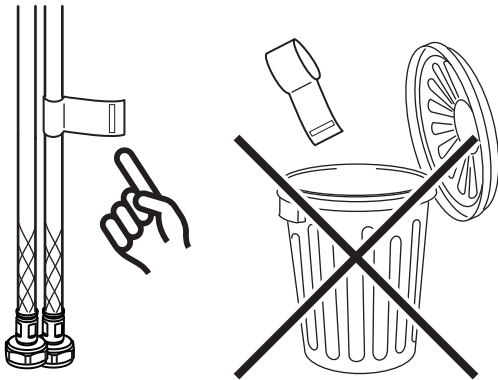
English

RSK No: 8312368, 8312369,
8312370, 8312371









Svenska

Rekommenderad
varmvattentemperatur:
60°C

Max. varmvattentemperatur:
80°C

English

Recommended hot water
temperature: 60°C

Max. hot water temperature:
80°C

Svenska

Rekommenderat arbetstryck:

1 - 5 bar

Max. statiskt tryck: 10 bar

Max. provningstryck: 16 bar

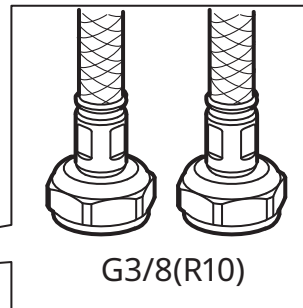
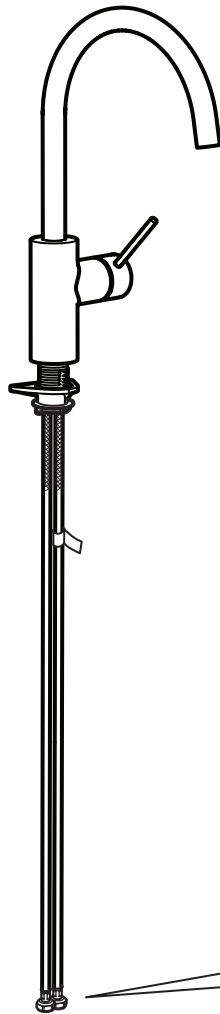
English

Recommended working pressure:

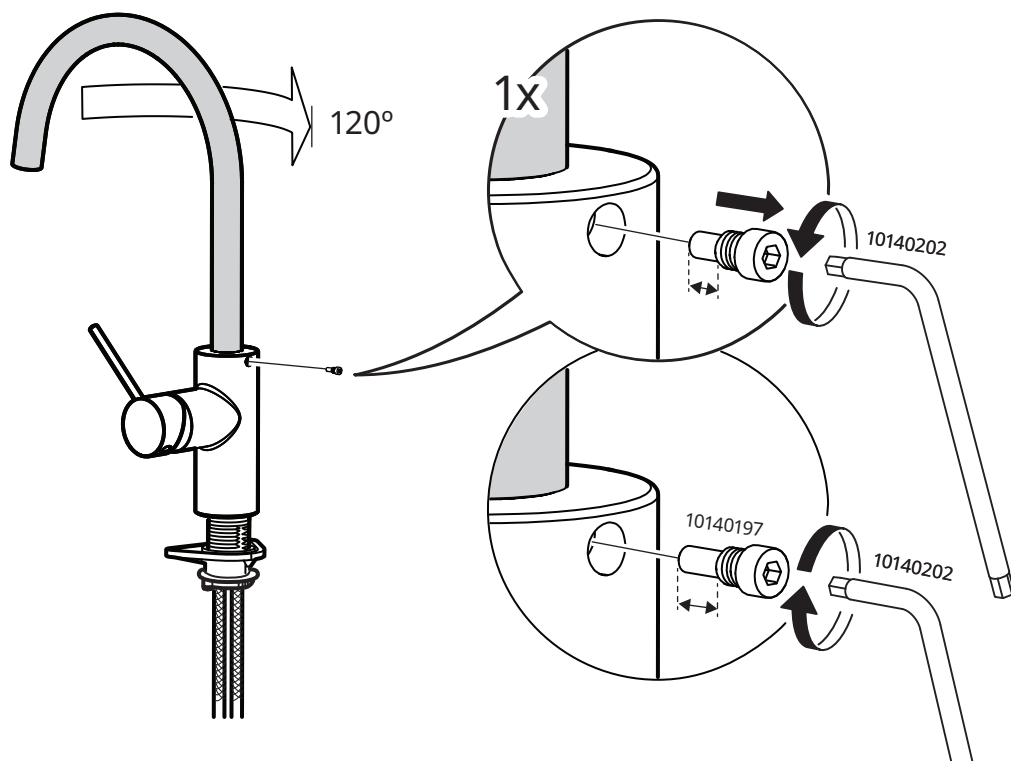
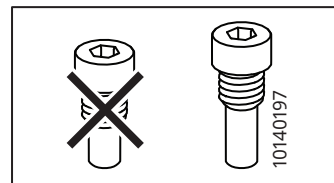
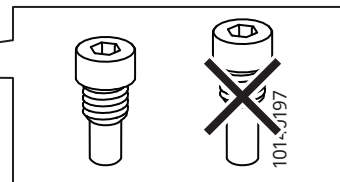
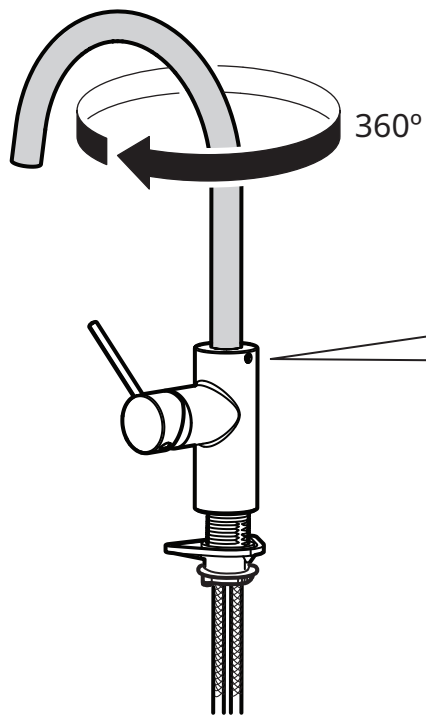
1 - 5 bar

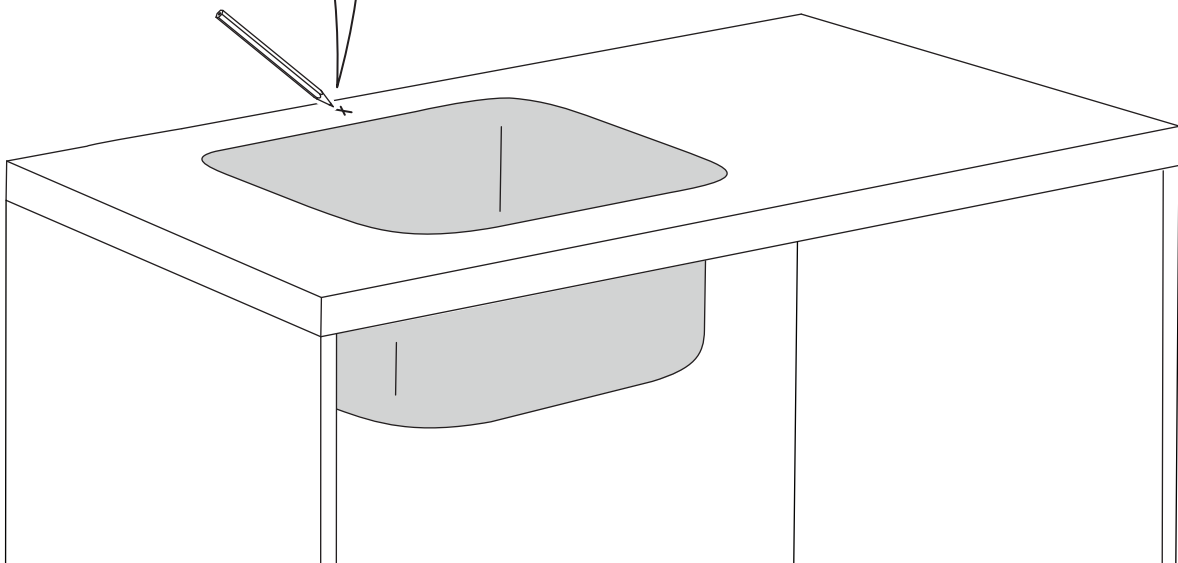
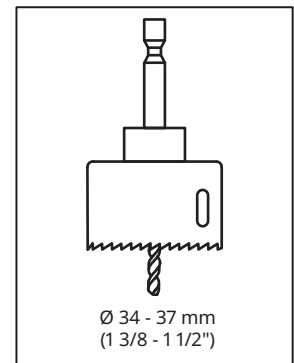
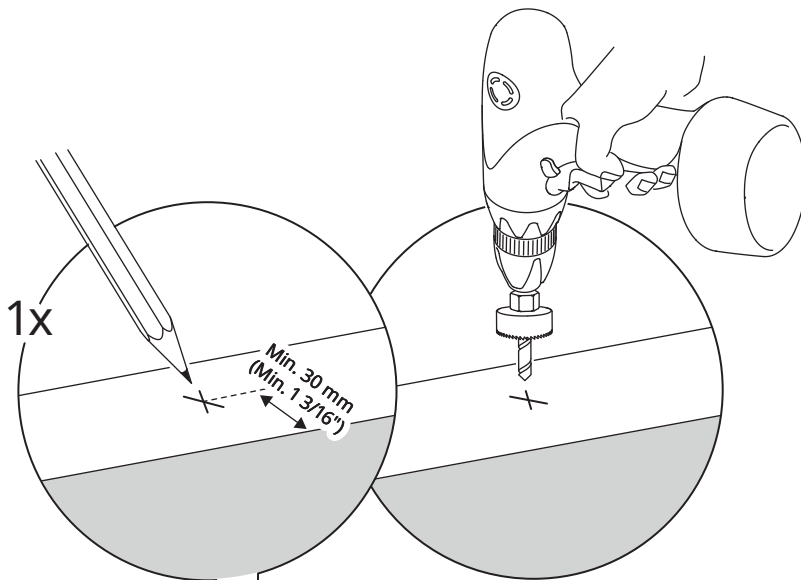
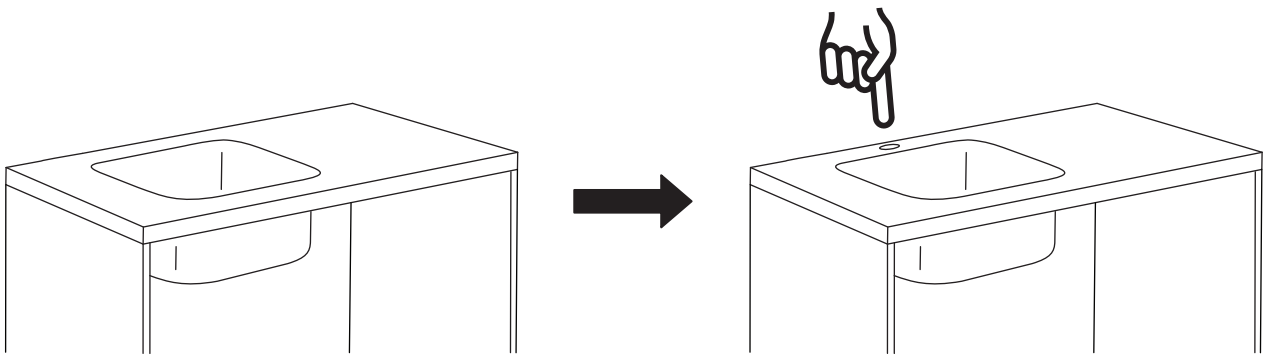
Max. static pressure: 10 bar

Max. test pressure: 16 bar



G3/8(R10)





1

Svenska

Täta de öppna ytorna med silikon för att förhindra vatten från att tränga in i bänkskivan vid eventuellt läckage. Silikon medföljer ej.

English

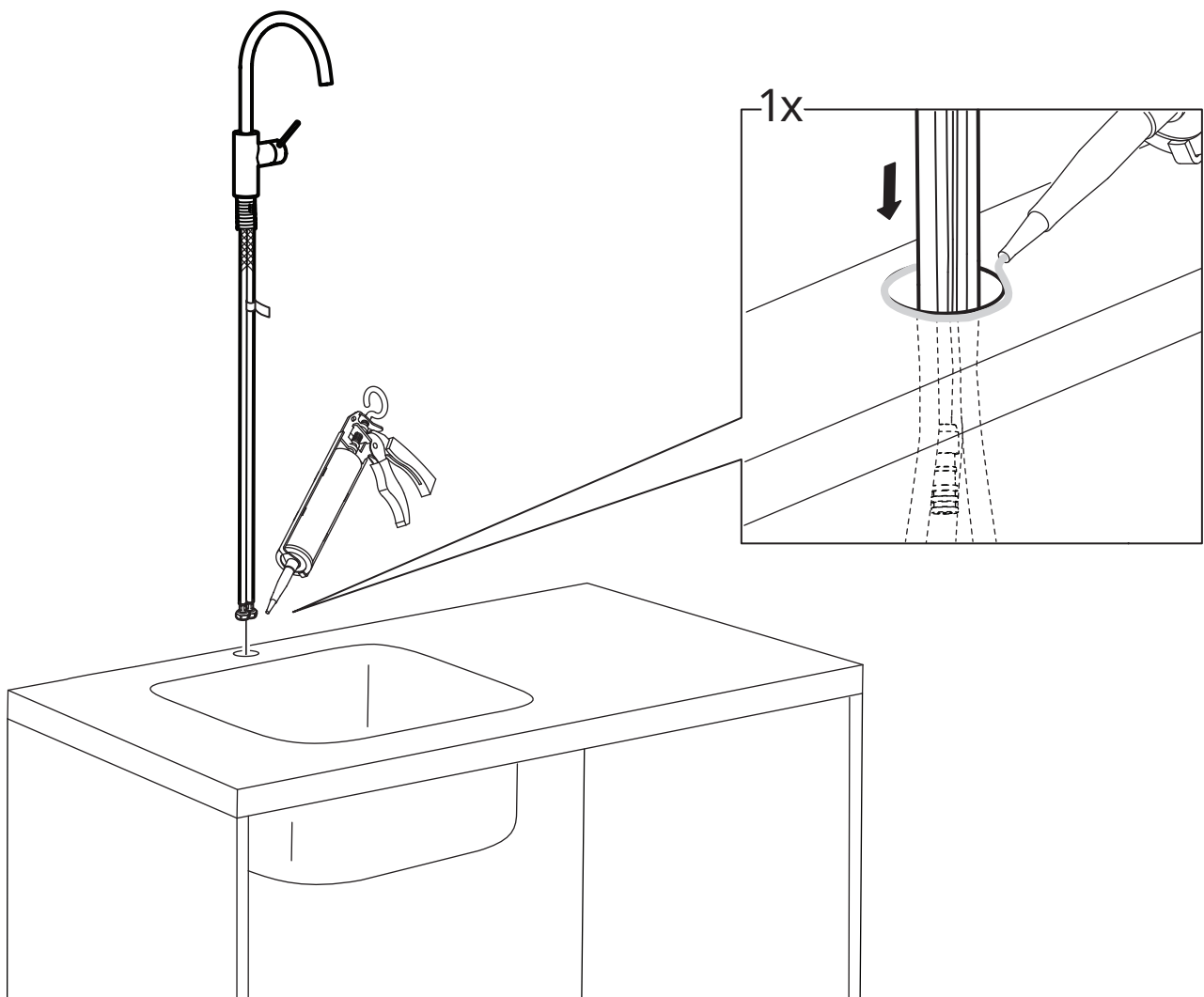
Seal the open surfaces with silicone to prevent water from penetrating the worktop upon any leaks. Silicone is not included.

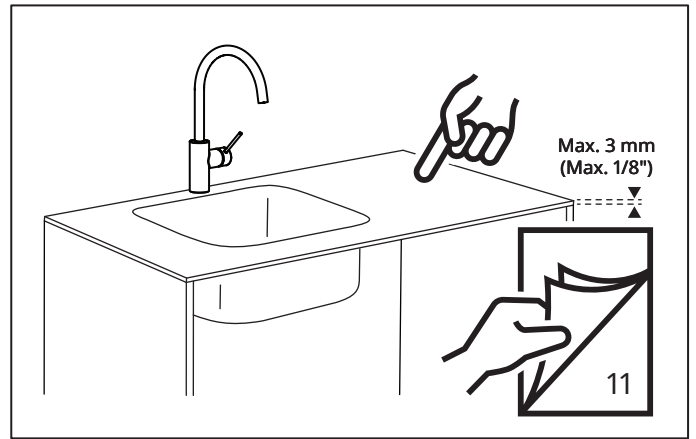
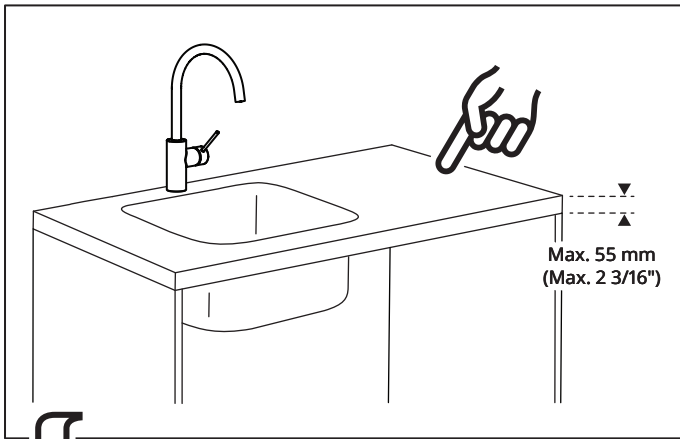
Svenska

Silikonfogmassan måste vara vatten- och mögelbeständig och lämplig för installationen, i enlighet med EN 15651-3, klass XS1.

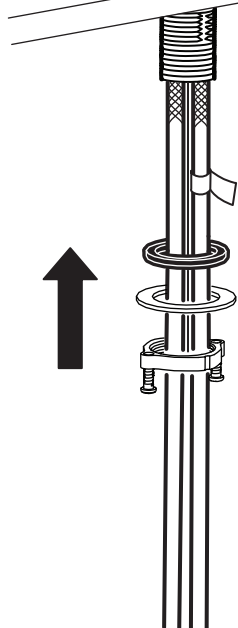
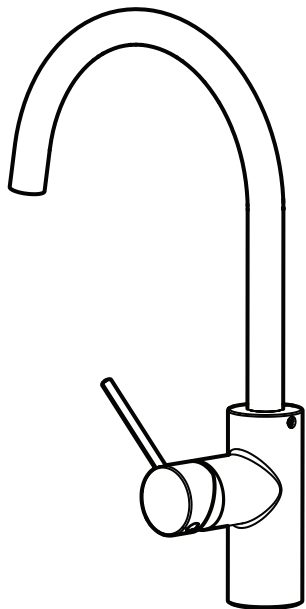
English

Silicone sealant must be water- and mould-resistant and suitable for the installation, according to EN 15651-3, Class XS1.

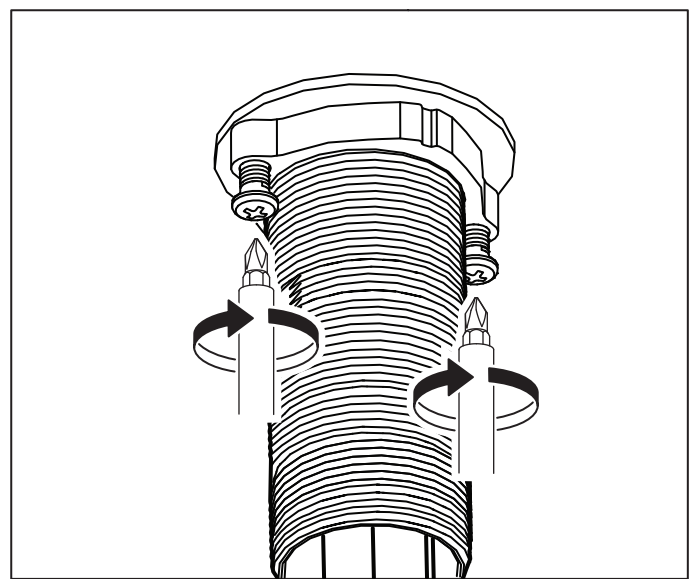
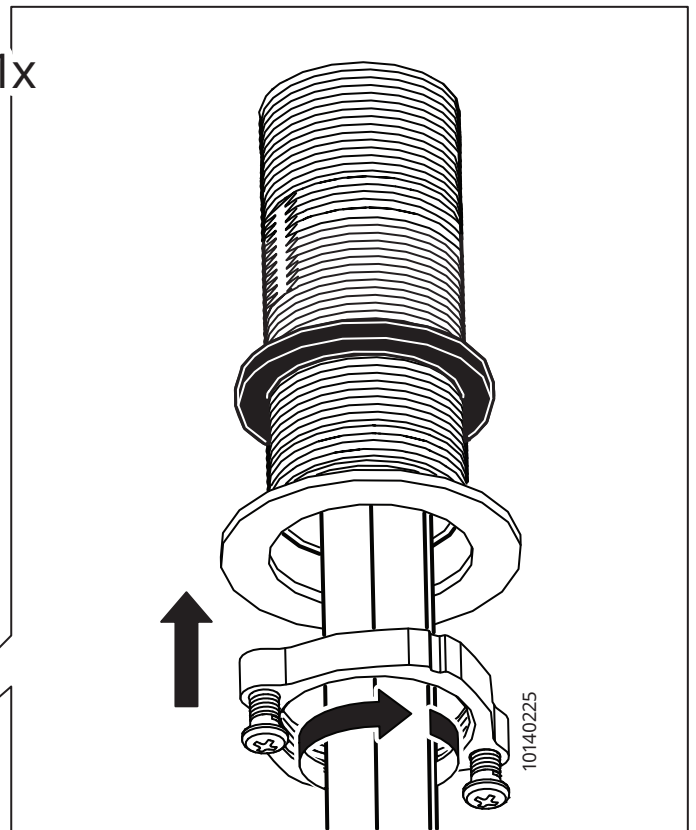


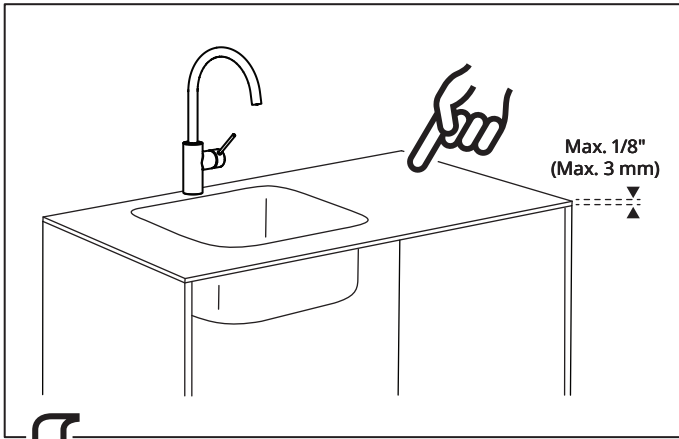


2

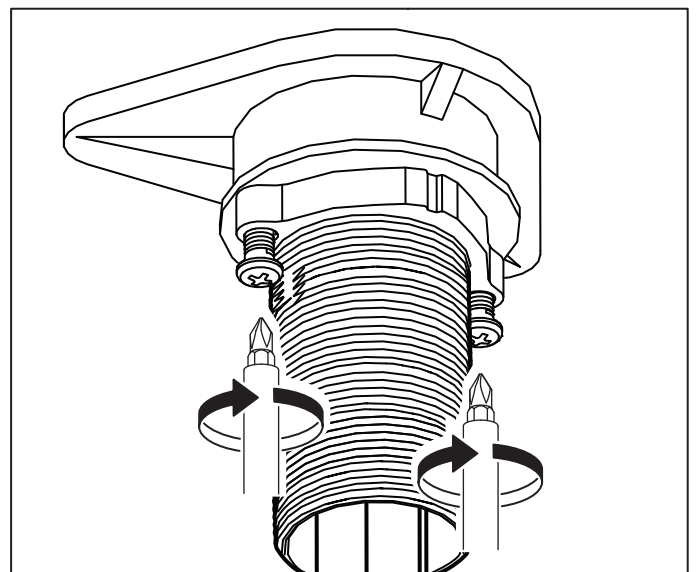
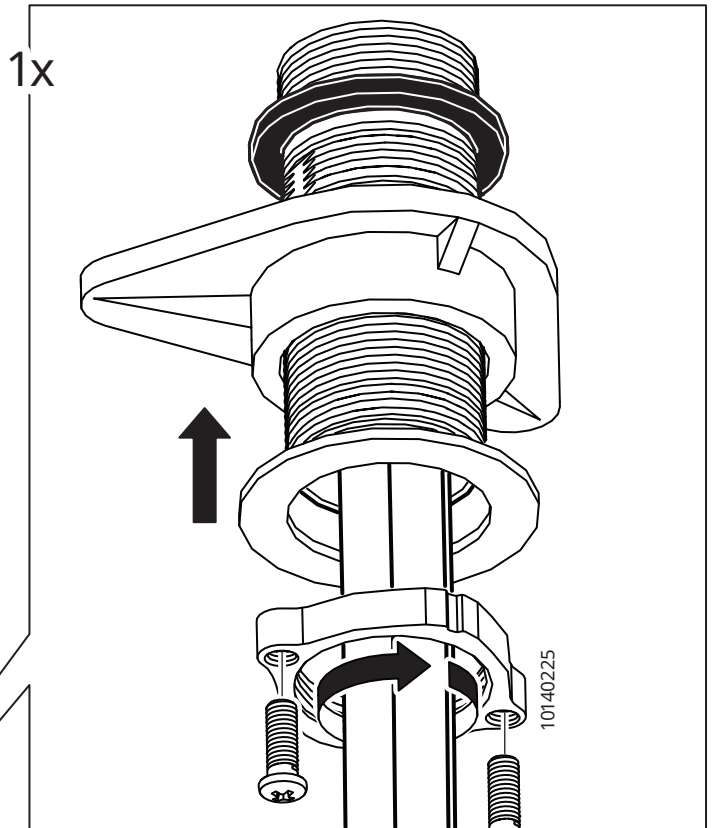
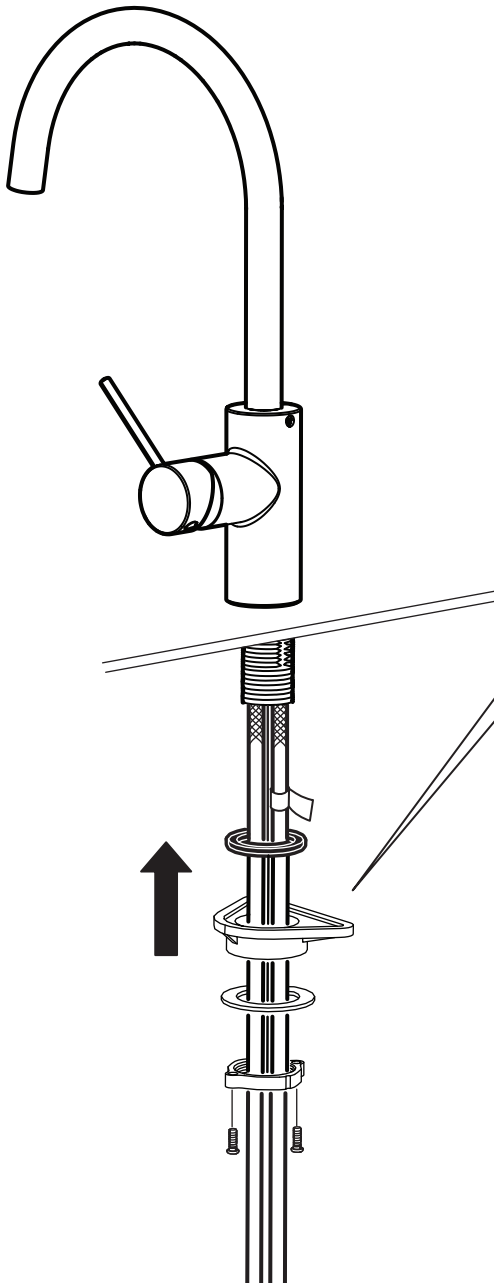


1x

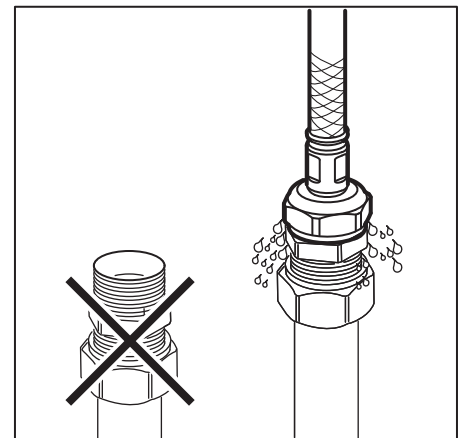
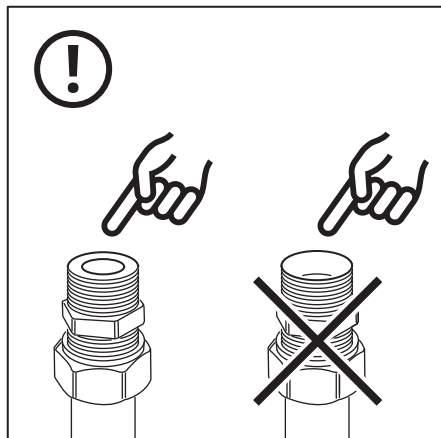
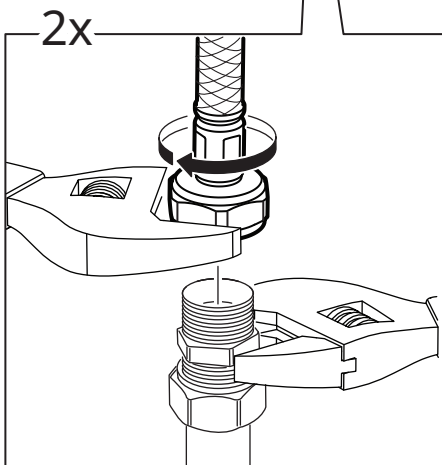
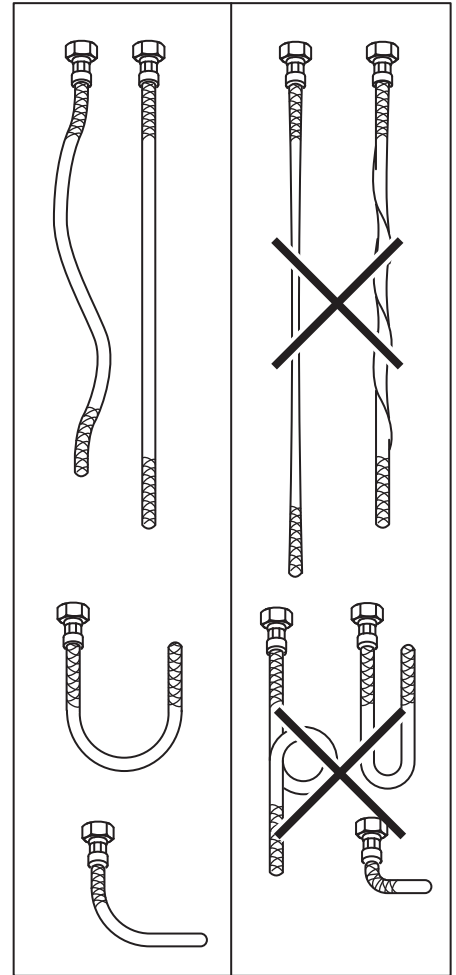
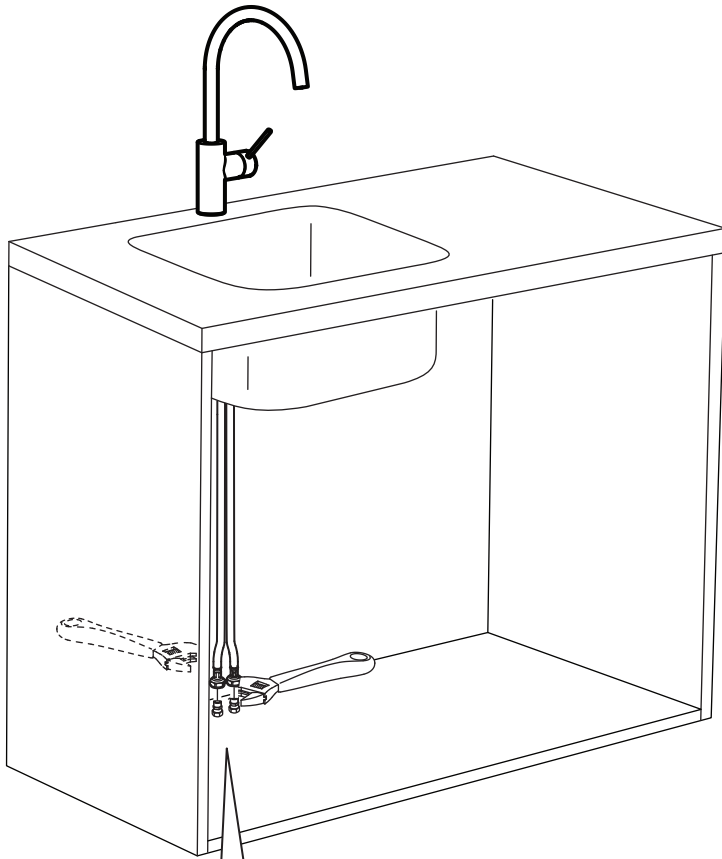




2



3

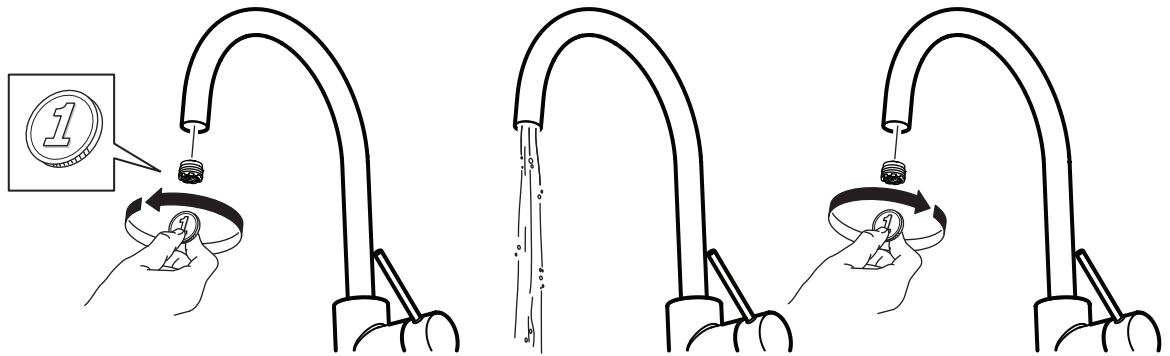


Svenska
Röranslutningen måste vara plan och fri från vassa kanter.

English
The pipe connection needs to be flat and free from sharp edges.

Svenska
OBS! Dra aldrig åt för hårt; slangar och packningar kan skadas.

English
IMPORTANT! Do not tighten too hard: this can damage hoses/pipes and washers.



Svenska

Innan användning: skruva loss filtret med ett mynt och låt vatten rinna igenom några minuter. Skruva sedan på filtret igen.

OBS! Dra inte åt för hårt; filtret kan skadas.

English

Before use: Unscrew the Aerator/Flow Guide with a coin and allow the water to run freely for a few minutes. Then screw the Aerator/Flow Guide back in place up to the stop DO NOT OVER TIGHTEN.



Svenska

Kontrollera regelbundet att installationen är tät.

English

Check at regular intervals to make sure that the installation is not leaking.

