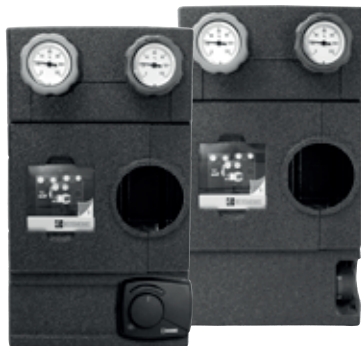




ESBE AB
Bruksgatan 22
SE-333 75 Reftele
www.esbe.eu



ESBE System Units
**CIRCULATION UNIT DN25/32
FLEXI**



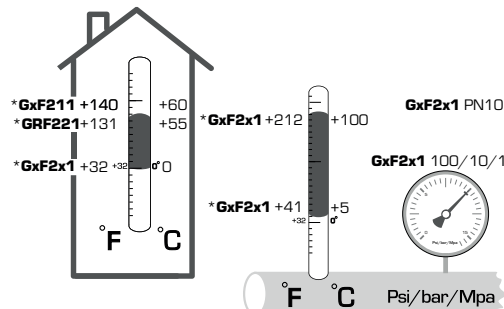
Series GDF211
Series GFF211

Series GRF211
Series GRF221



LVD 2014/35/EU
EMC 2014/30/EU
RoHS 2011/65/EU
ErP 2009/125/EU

PED 2014/68/EU, article 4.3



*consider data for choosen pump

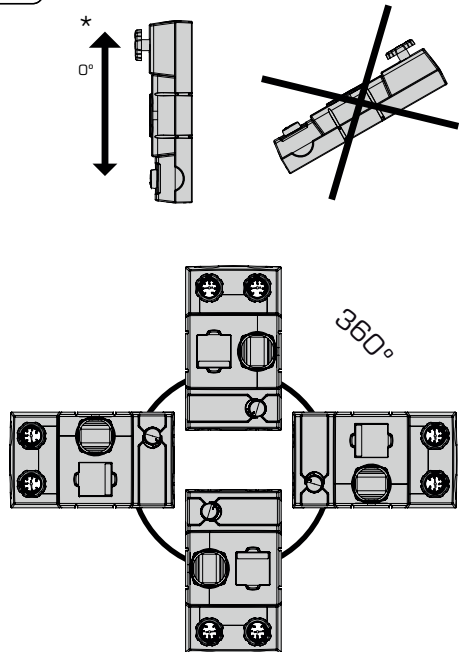


| SERIES | FUNCTION |
|----------------|----------|
| ESBE GDF211 | |
| ESBE GFF211 | |
| ESBE GRF211 | |
| ESBE GRF221 | |

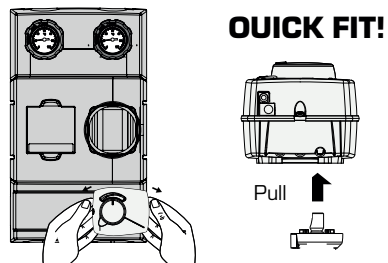
Mtrl.nnr: 98141187 • Ritn.nnr: 11101 • vers B • Rev. 2026-01-09



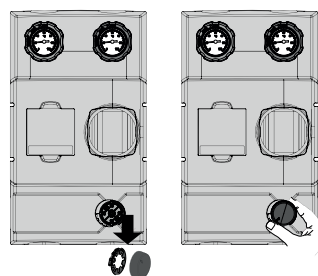
Mounting position



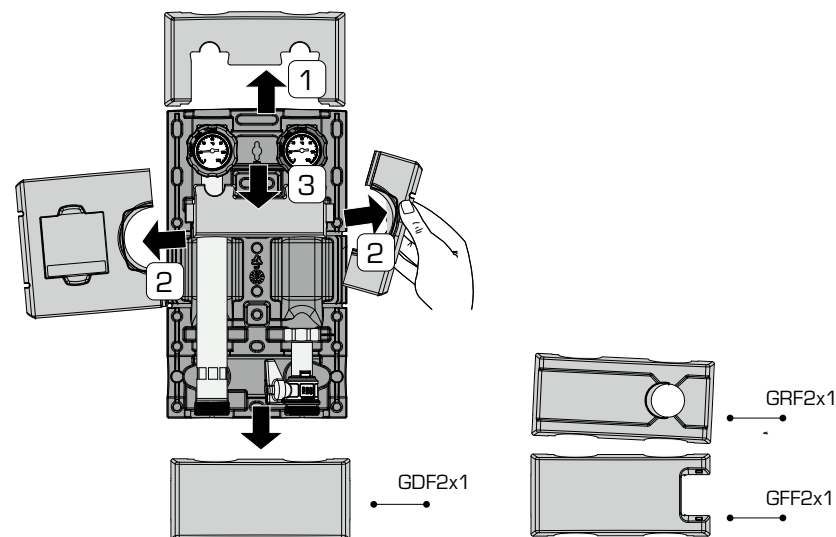
1 Remove actuator/controller Series GRF221



Remove knob Series GRF211

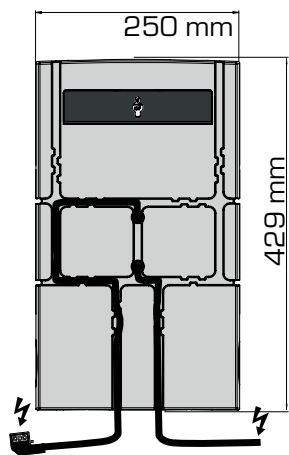


2 Remove insulation





Dimensions • Cabling

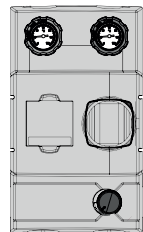


5

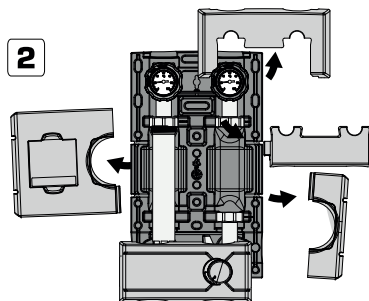


Example of pump installation

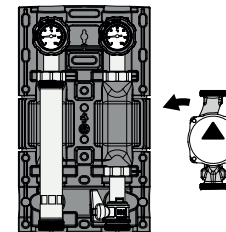
1



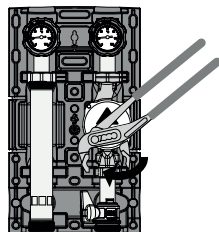
2



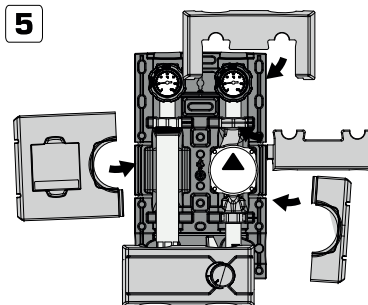
3



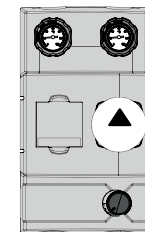
4



5



6

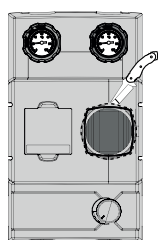


4

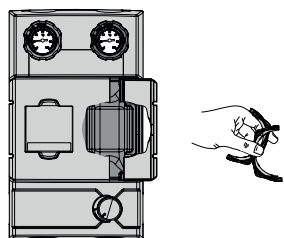


Examples of possible insulation adjustments

1

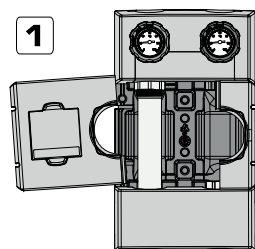


2

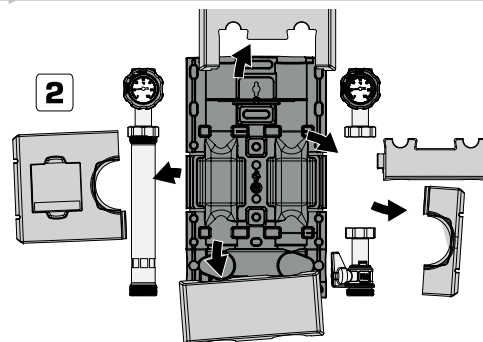


Left - right transition

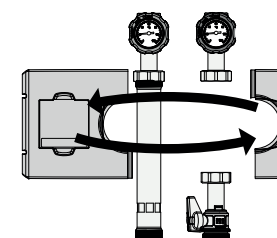
1



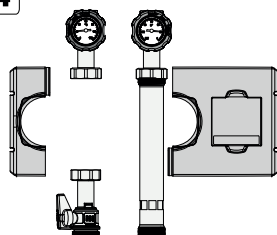
2



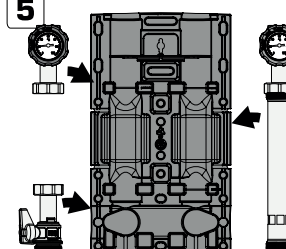
3



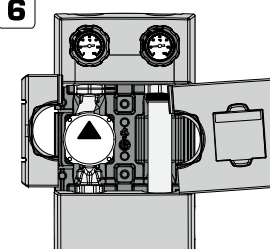
4

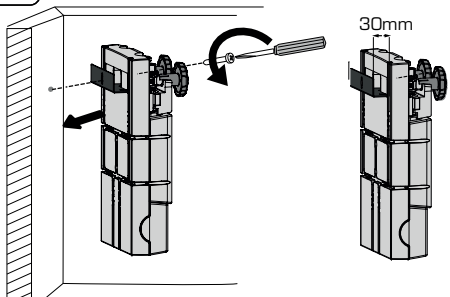
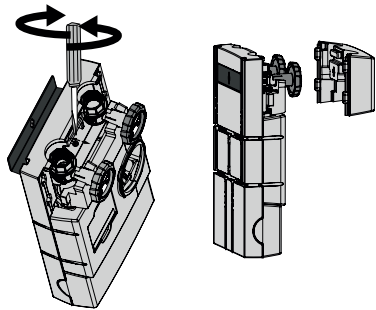
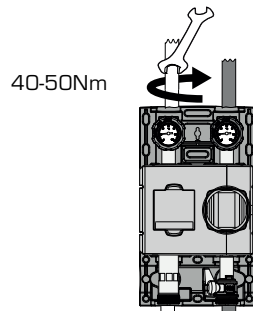


5

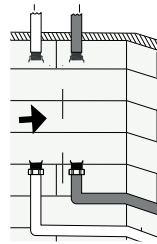
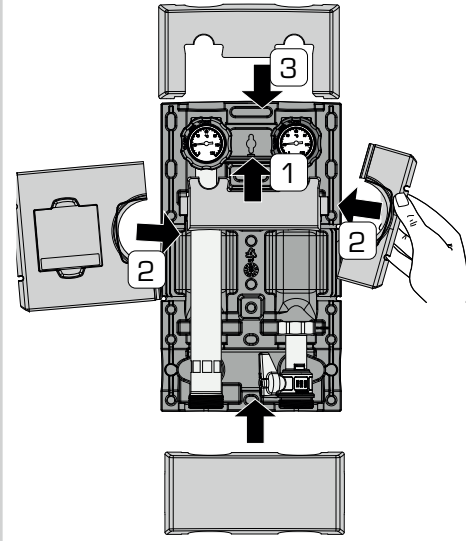
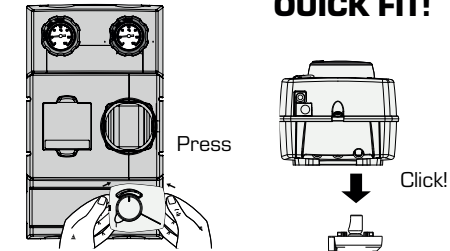


6

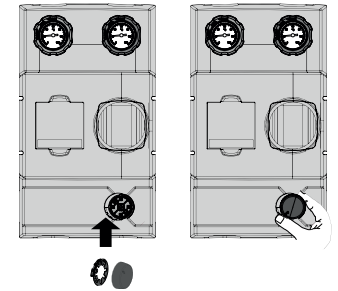


3**Assembling on wall****Adjust wallbracket****7****Fit supply pipes**

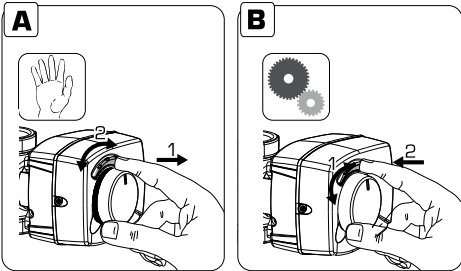
c/c 125mm

**i****Assemble insulation****8****Assemble actuator/controller**
Series GRF221**QUICK FIT!****Assemble knob**

Series GRF211

**i****Commissioning actuator**

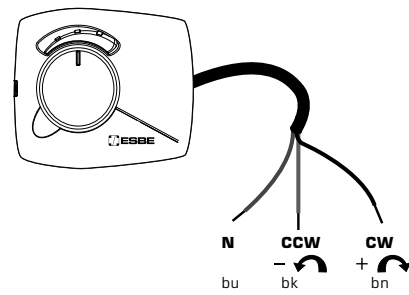
Series GRF221



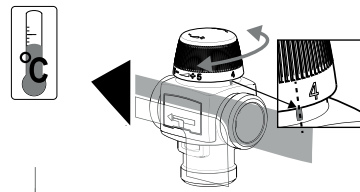
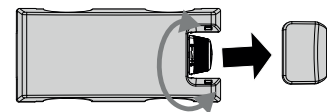
esbe.eu/group/products/
rotary-actuators

i**Electric installation**

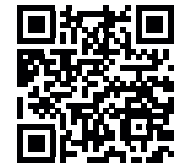
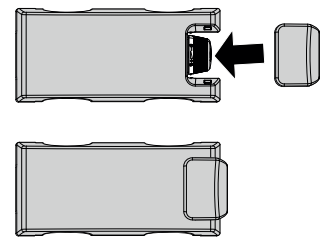
Series GRF221

**i****Commissioning fixed temperature**

Series GFF211



| | | | | | | |
|------|------|------|------|------|------|------|
| 0,5 | 1 | 2 | 3 | 4 | 5 | 6 |
| 22°C | 25°C | 33°C | 40°C | 47°C | 54°C | 60°C |

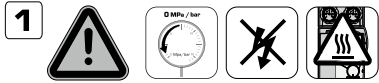
Seal

esbe.eu/group/products/
thermostatic-mixing-valves

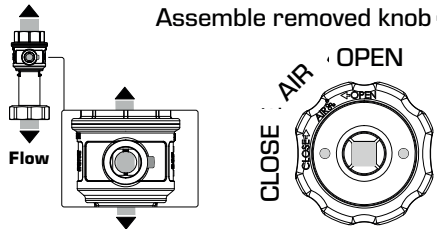
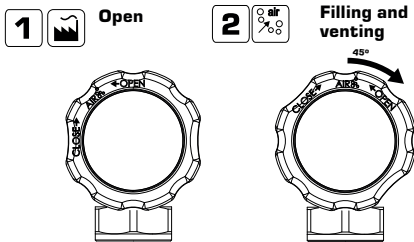


Commissioning

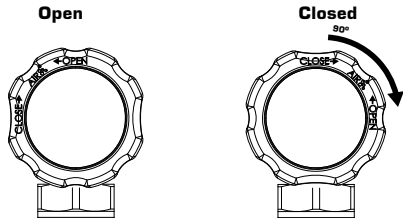
Preparation



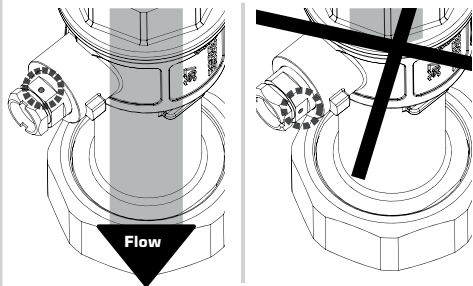
Filling and venting



Checkvalve position



Drilled mark, indicate check valve position



8

Expose application info using leaflet

