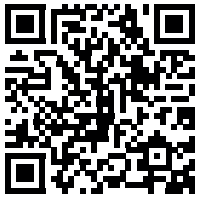




ESBE AB  
Bruksgatan 22  
SE-333 75 Reftele  
www.esbe.eu



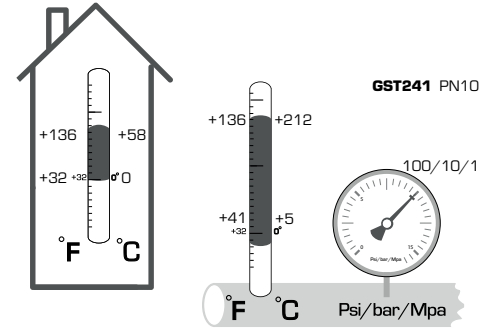
ESBE System Units  
**RETURN TEMPERATURE UNIT**  
**SERIES GST241**



Series GST241



PED 2014/68/EU, article 4.3

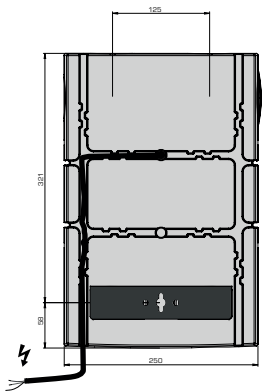


SERIES	FUNCTION
GST241	

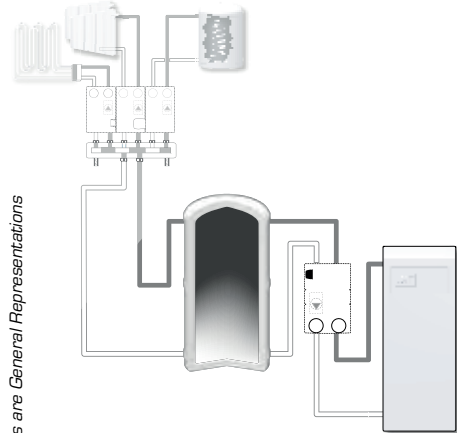
Mtrl.no. 98141125 • Dwg. 7955 • vers. B • Rev. 2026-02-12



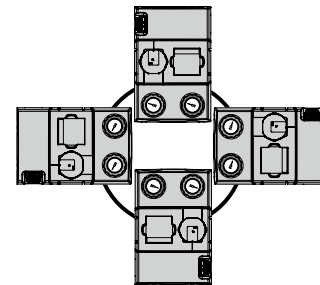
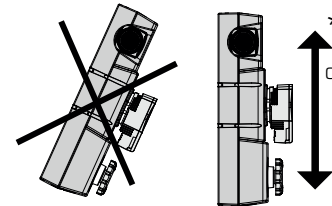
**Cabling • Dimensions**



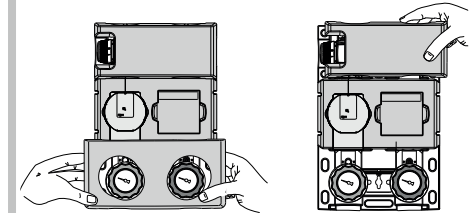
**Application example**



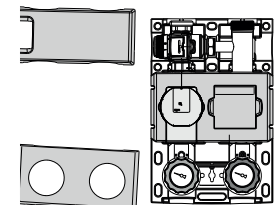
**Mounting position**



**Pull up insulation**

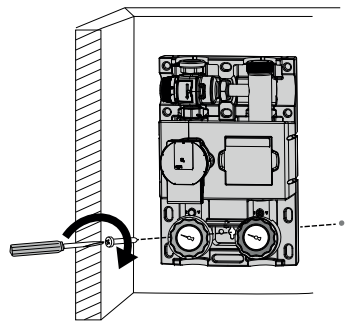


**Remove**



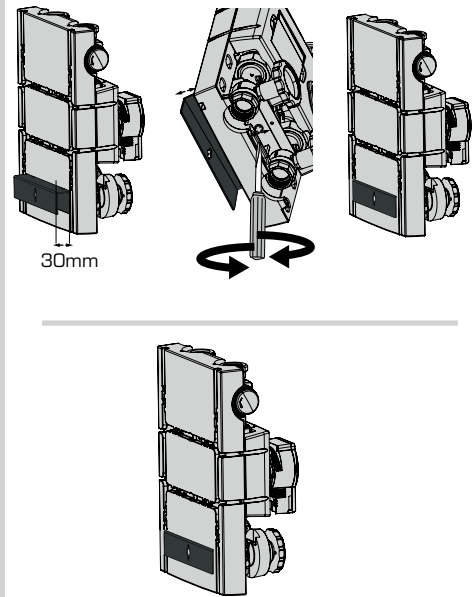
**2**

**Assembling on wall**



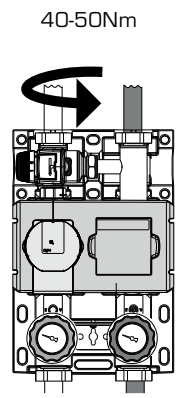
**3**

**Adjust wallbracket**



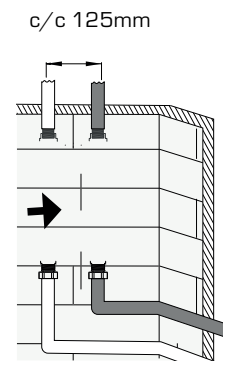
**4a**

**Fit supply pipes**



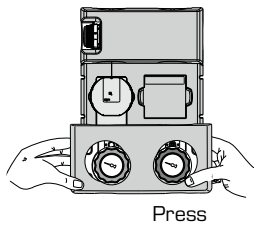
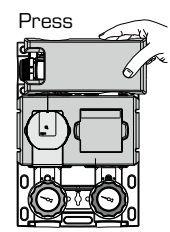
**4b**

**Fit supply pipes**



**5**

**Assemble insulation**



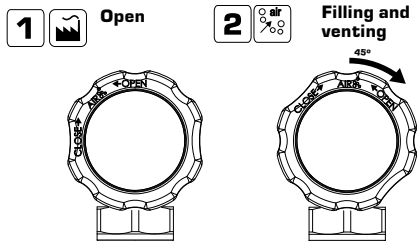


## Commissioning

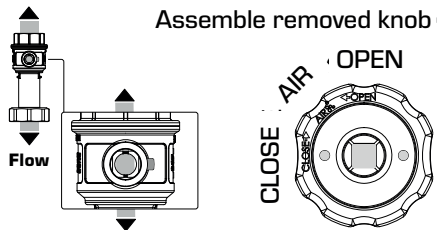
### Preparation



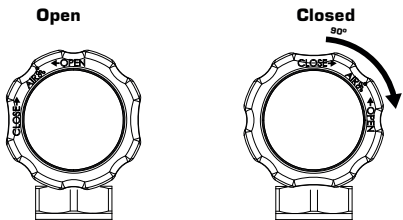
### Filling and venting



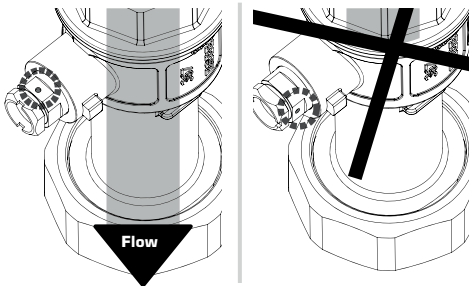
### Assemble removed knob



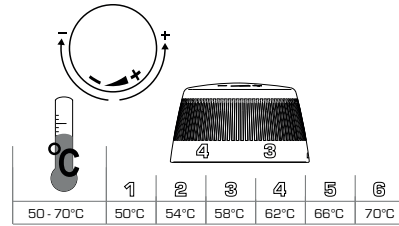
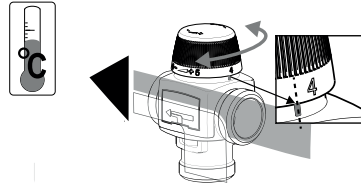
### Checkvalve position



Drilled mark, indicate check valve position



## Commissioning fixed temperature



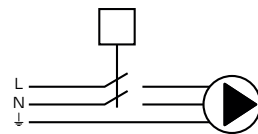
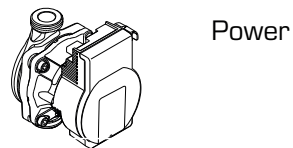
The temperatures are only a reference and might be different under certain conditions. However the range will be kept.



<https://esbe.eu/group/products/solid-fuel-products/vtc400>



## Electric installation

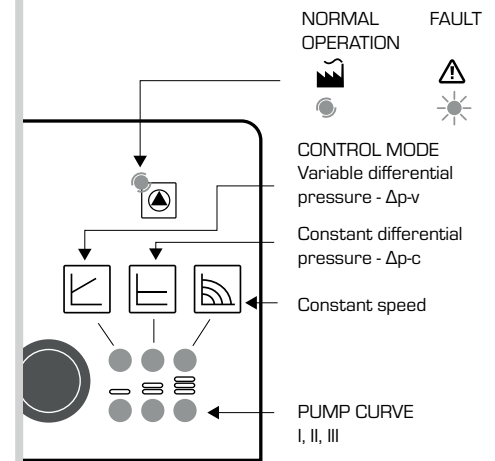


## Factory setting

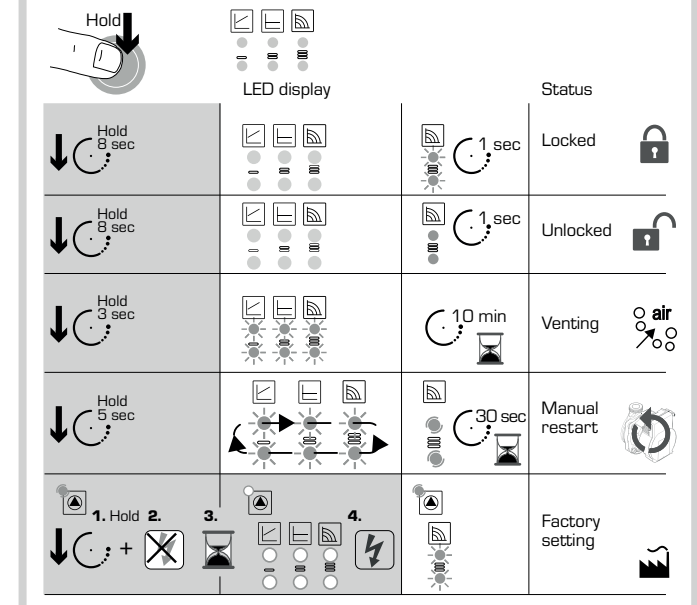


= Factory settings

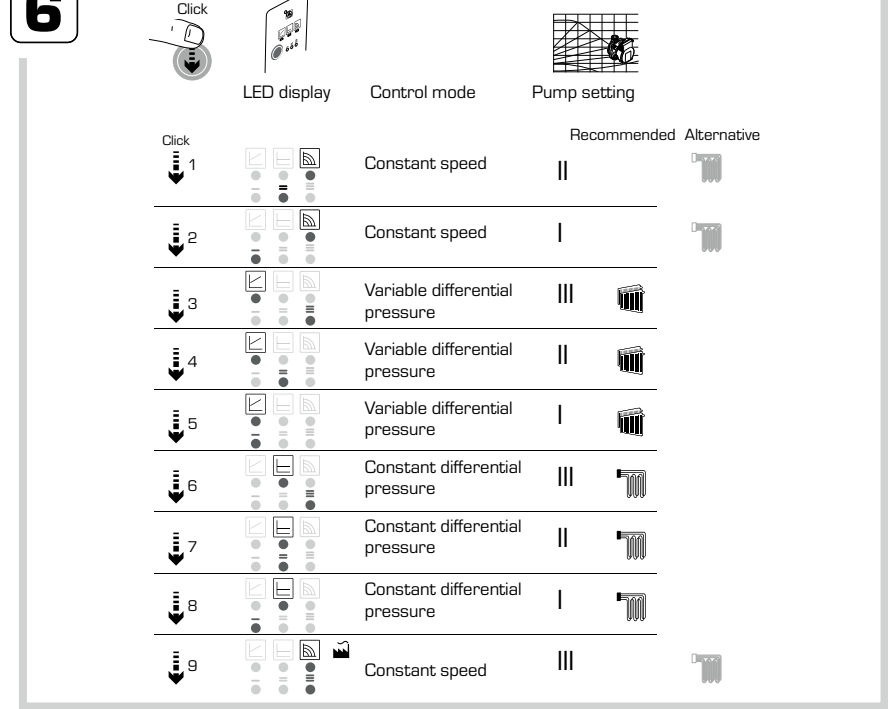
## Wilo Display



## Pump Settings

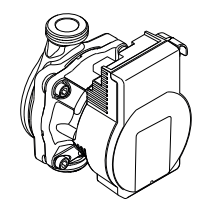


## Settings navigations



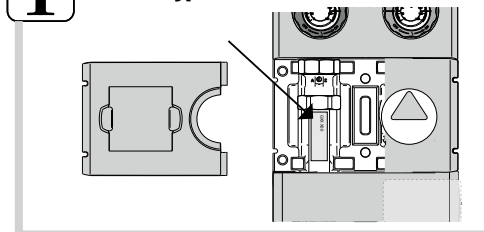
## WILO - Faults, Causes and Remedies

LED	Faults	Cause	Remedy
Lights up red	Blocking	Rotor blocked	Activate manual restart or contact customer service
	Contacting/ winding	Winding defective	
Flashes red	Under/overvoltage	Power supply too low/high on mains side	Check mains voltage and operating conditions, and request customer service
	Excessive module temperature	Module interior too warm	
	Short-circuit	Motor current too high	
Flashes red/green	Generator operation	Water is flowing through the pump hydraulics, but there is no mains voltage at the pump	Check the mains voltage, water quantity/pressure and the ambient conditions
	Dry run	Air in the pump	
	Overload	Sluggish motor; pump is operated outside of its specifications (e.g. high module temperature). The speed is lower than during normal operation	



<http://www.esbe.eu/global/en/products/circulation units>

## Type number



## Expose application info using leaflet

