

# USTM

## Transition fitting HD-PE/steel with female thread

Transition fitting steel pipe USTM

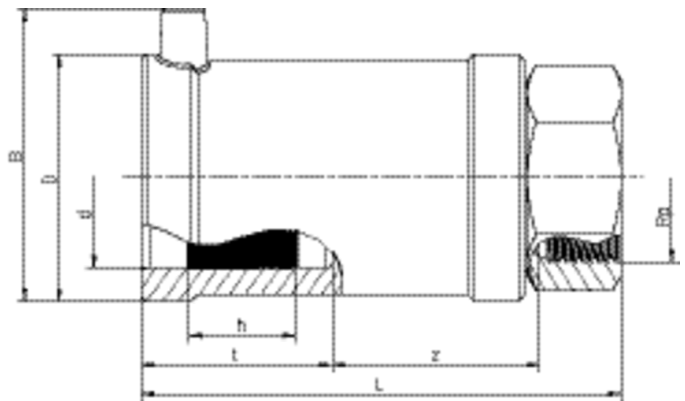
- Gas and H<sub>2</sub>
- Maximum pressure: Gas 5 bar
- Material: PE 100 and steel (EN 10278; EN 10277-3 - 11SMn30+C -, thread to EN 10226-1)
- Safety technology

**Note:**

Anchored the steel side non-detachable and non-rotatable in the PE.

Self-sealing, patented sealing geometry without elastomeric gasket for use in gas applications.

Other thread dimensions available on request.



PE 100 SDR 11

Maximum permissible working pressure 5 bar (gas)



Reference	d	B	D	h	L	t	z	Weight kg	BX	PU
612570	32	61	47	24	112	42	49	0,340	20	1080
612572	40	70	58	30	121	46	53	0,500	20	800
612574	50	80	70	30	136	53	60	0,650	15	600
612576	63	94	84	35	141	53	61	1,010	10	400

Other thread dimensions on request

FRIALEN safety fittings can be fused with SDR11 - SDR17.6 pipes, minimum wall thickness s minimum ≥ 3 mm. Other levels of SDR can be processed on request. Please note the mandatory labels directly on the product. DVGW test mark issued: DV-7501AU2256

# USTM

## Transition fitting HD-PE/steel with female thread

### Areas of Application

FRIALEN-Transition Fittings USTM are threaded joints as an adaptor from a metal pipe with external thread to a HD-PE pipe. Joint on the part of HD-PE by FRIALEN-Coupler.

### Assembly Instructions

The threaded component must be held with a spanner to prevent it twisting in the HD-PE component. The fusion of the HD-PE side takes place by FRIALEN-fusing – leakproof and longitudinally strong.

The installation of the steel and the HD-PE side has to be prepared according to the general installation instructions (see "Transition Fittings with threaded connection" in "Assembly Instructions" for "FRIALEN-Safety Fittings for house connections and distribution pipes up to d 225"). This involves removing the oxide skin and cleaning the pipe ends.

### Good reasons for using the FRIALEN-USTM:

- Compact construction
- HD-PE side with exposed heating element for optimal heat transfer
- Cold zones at the end to prevent the flow of molten material
- No holding clamps required
- Large insertion depth, extra wide fusion zones
- Steel end permanently anchored in the HD-PE and will not distort
- Self sealing patented sealing geometry without elastomer seal
- Additional barcode for tracing back the fitting (Traceability-Coding)