



Submersible Grey Water Pump

## **AmaDrainer 301/302/303/358**

50 Hz

### **Type Series Booklet**



## **Legal information/Copyright**

Type Series Booklet AmaDrainer 301/302/303/358

All rights reserved. The contents provided herein must neither be distributed, copied, reproduced, edited or processed for any other purpose, nor otherwise transmitted, published or made available to a third party without the manufacturer's express written consent.

Subject to technical modification without prior notice.

© KSB SE & Co. KGaA, Frankenthal 2025-09-10

## Contents

<b>Drainage .....</b>	<b>4</b>
Drainage Pumps / Grey Water Pumps .....	4
AmaDrainer 301/302/303/358 .....	4
Main applications .....	4
Fluids handled .....	4
Operating data .....	4
Design details .....	4
Designation .....	5
Materials .....	5
Product benefits .....	5
Overview of product features / selection tables .....	6
Technical data .....	7
Characteristic curves .....	8
Dimensions and connections .....	10
Installation information .....	11
Scope of supply .....	13
Accessories .....	14
Exploded view and list of components .....	22

## Drainage

### Drainage Pumps / Grey Water Pumps

# AmaDrainer 301/302/303/358



- Brackish water
- Seawater ( $\leq 20\text{ °C}$ )
- Water containing salt ( $\leq 20\text{ °C}$ )

#### Further information on fluids handled

Overview of fluids handled (⇒ Page 6)

#### Operating data

**Table 1:** Operating properties

Characteristic		Value
Flow rate	Q [m <sup>3</sup> /h]	$\leq 14$
	Q [l/s]	$\leq 3,9$
Head	H [m]	$\leq 12,5$
Fluid temperature	T [°C]	$\leq +50$ (continuous duty)
		$\leq +90$ (short-time duty)

#### Design details

##### Design

- Fully floodable submersible motor pump
- Close-coupled design
- Single-stage
- Wetted parts made of materials coated with anti-corrosive
- External float switch
- Maximum immersion depth: 2 m
- Sizes 301/302/303:
  - Integrated swing check valve

##### Installation

- Vertical installation
- Wet-installed transportable model

##### Drive

- Jacket-cooled single-phase AC motor
- 230 V, 50 Hz
- Frequency of starts  $\leq 30$  starts/hour
- Integrated temperature switch
- Enclosure IP68 (permanently submerged) to EN 60529/ IEC 529
- Power cable incl. shockproof plug

##### Shaft seal

- Drive end, 1 shaft seal ring
- Pump end, 2 shaft seal rings
- Liquid reservoir between the seals for cooling and lubrication

##### Bearings

- Rolling element bearings
- Grease-packed for life
- Maintenance-free

#### Main applications

- Drainage
- Disposal
- Drainage systems
- Lowering groundwater levels
- Maintaining groundwater levels
- Draining of pits, shafts, etc.
- Surface drainage

#### Fluids handled

- Sizes 301/302/303:
  - Solid particles with a particle size of up to 10 mm
- Size 358:
  - Solid particles with a particle size of up to 35 mm

#### Material variant A (variant for grey water)

- Slightly contaminated grey water ( $\leq 50\text{ °C}$ )
- Wash water (up to  $\leq 90\text{ °C}$  max. for short periods  $t \leq 3$  minutes)
- Seepage water
- River water, lake water and groundwater
- Waste water without faeces

#### Material variant C (universal variant, also for aggressive fluids)

- Slightly contaminated grey water ( $\leq 50\text{ °C}$ )
- Wash water (up to  $\leq 90\text{ °C}$  max. for short periods  $t \leq 3$  minutes)
- Seepage water
- River water, lake water and groundwater

### Automation

- Pump controlled via float switch
- Pump controlled by external control unit

### Designation

#### Example: AmaDrainer C 301

**Table 2:** Designation key

Code	Description	
AmaDrainer	Type series	
C	Material variant	
	A <sup>1)</sup>	Variant for grey water
	C <sup>2)</sup>	Universal variant, also for aggressive fluids
301	Size	

### Materials

**Table 3:** Overview of available materials

Part No. (⇒ Page 22)	Description	Material variant A	Material variant C
		AmaDrainer 358	AmaDrainer 301/302/303
79-1	Float switch (float)	Polypropylene	
101	Pump casing	Polypropylene, 30 % glass fibre reinforced	
107	Discharge casing	Polypropylene, 30 % glass fibre reinforced	
161	Casing cover	Polypropylene with 20 % talc (PP-TS 20)	
210	Shaft	1.4057	Chrome nickel molybdenum steel (1.4571)
230	Impeller	Polyamide	Noryl GNF2
811	Motor housing	Chrome nickel steel (1.4301)	Chrome nickel molybdenum steel (1.4571)

### Product benefits

- **Universal use, provides peace of mind regarding the fluids handled**
  - Supplied in material variant C as standard (sizes 301/302/303)
- **Absolutely tight**
  - Hermetically sealed pump head, automatic switchgear activated by a magnetic switch
- **Flexible adjustment**
  - Automatic switchgear with adjustable, variable level control and maximum travel stop
  - Straightforward adaptation for external control system by means of supplied locking disc
- **Easy and fast replacement**
  - Power cable with mains plug
  - Discharge-side connection via connection socket (sizes 301/302/303)
- **No drainage of the discharge pipe**
  - Integrated swing check valve (sizes 301/302/303)
- **Minimal space requirements**
  - Compact design with vertical discharge nozzle for installation in narrow sumps
- **Protected against overload**
  - Integrated thermal motor protection
- **High operating reliability**
  - Motor protected by triple shaft seal lubricated by the barrier fluid
  - Additional lubrication of the seal faces in the event of dry running
- **Durable and robust**
  - High-quality plastic casing provides low weight, high corrosion resistance, good noise absorption, abrasion resistance and impact resistance
- **Economical operation**
  - Hydraulic system and motor optimised for high pump output at high efficiency
- **Protected against overheating**
  - The jacket-cooled motor design permits operation even when the motor is not submerged.

1 Size 358 only  
2 Sizes 301/302/303 only

## Overview of product features / selection tables

### Overview of fluids handled

**Table 4:** Symbols key

Symbol	Description
X	Standard
-	Version not available / not feasible

The table of fluids handled is a selection aid for different applications. It serves as guidance and is based on long-standing experience. The data are reference values and are not to be considered generally binding recommendations. They shall not be the basis for warranty claims. Please contact your nearest sales branch for in-depth advice.

**Table 5:** Table of fluids handled

Fluids handled	Material variant A	Material variant C
	AmaDrainer 358	AmaDrainer 301/302/303
Antifrogen-water mixture	X	X
Cider	X	X
Beer	X	X
Spirits	X	X
Buttermilk	X	X
Calcium acetate	X	X
Calcium hydroxide	X	X
Deionised water	X	X
Peanut oil	X	X
Vinegar	-	X
Ethylene glycol	X	X
Liquid fertiliser	X	X
Anti-freeze	X	X
Glycerine	X	X
Grisiron	X	X
Uric acid	X	X
Potassium hydroxide	X	X
Calcium carbonate	X	X
Coconut oil	X	X
Evaporated milk	X	X
Lemonades	X	X
Corn oil	X	X
Milk	X	X
Whey	X	X
Sodium carbonate	X	X
Sodium chloride up to 3 % concentration	-	X
Sodium hydrogen phosphate	X	X
Sodium nitrate	X	X
Sodium perborate	X	X
Sodium sulphate	X	X
Polyglycols	X	X
Rapeseed oil	X	X
Castor oil	X	X
Silicone oil	X	X
Silo leachate	-	X
Soybean oil	X	X
Edible vinegar	-	X
Edible oil	X	X
Trisodium phosphate	X	X
Vaseline	X	X
Washing machine lye	X	X
<b>Water</b>		
Drainage water	X	X
Fire-fighting water	X	X

Fluids handled	Material variant A	Material variant C
	AmaDrainer 358	AmaDrainer 301/302/303
Heating water	<b>X</b>	<b>X</b>
Lime water	-	<b>X</b>
Boiler water	<b>X</b>	<b>X</b>
Condensate	-	<b>X</b>
Cooling water	<b>X</b>	<b>X</b>
Seawater	-	<b>X</b> <sup>3)</sup>
Raw water	<b>X</b>	<b>X</b>
Swimming pool water (DIN 19643)	-	<b>X</b>
Salt water	-	<b>X</b> <sup>3)</sup>
Partly desalinated water	<b>X</b>	<b>X</b>
Fully desalinated water	-	<b>X</b>

### Technical data

#### AmaDrainer 301/302/303/358

**Table 6:** Technical data, 230 V, 50 Hz

Size	Discharge-side connection	Free passage [mm]	P <sub>1</sub> [kW]	P <sub>N</sub> [kW]	I <sub>N</sub> 1~230 V [A]	Power cable	Mat. No.	[kg]
						H05 RN8 [m]		
<b>Material variant A (variant for grey water)</b>								
358	G 1 1/2	35	0,85	0,43	4,00	10	48034487	6.8
<b>Material variant C (universal variant, also for aggressive fluids)</b>								
301	Rp 1 1/4	10	0,43	0,18	1,90	10	48034484	5.2
302	Rp 1 1/4	10	0,75	0,36	4,00	10	48034485	6.7
303	Rp 1 1/4	10	1,05	0,50	4,90	10	48034486	6.9

**3** Fluid temperature ≤ 20 °C

Characteristic curves

AmaDrainer 301/302/303, n = 2800 rpm (multi-vane impeller)

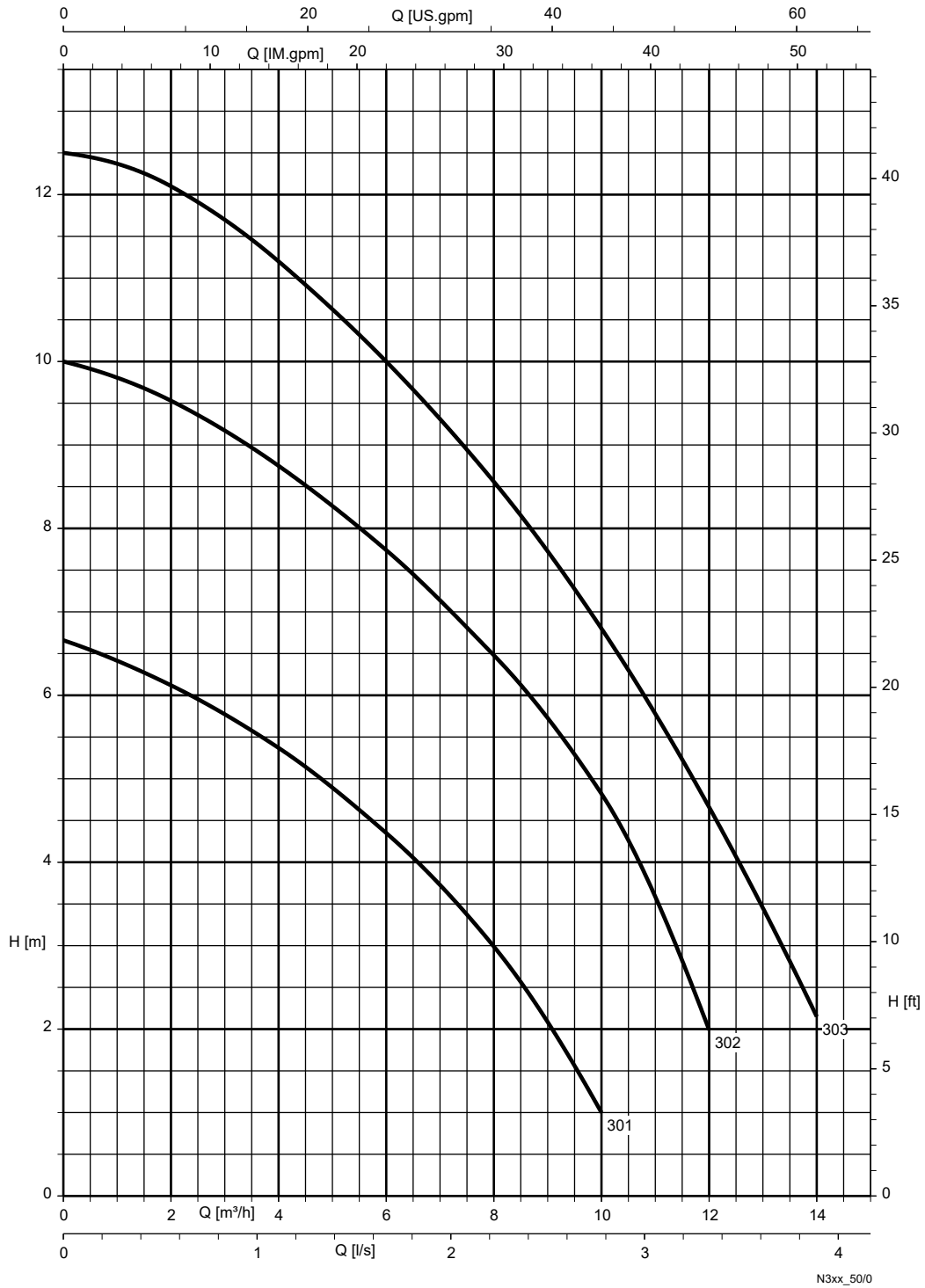
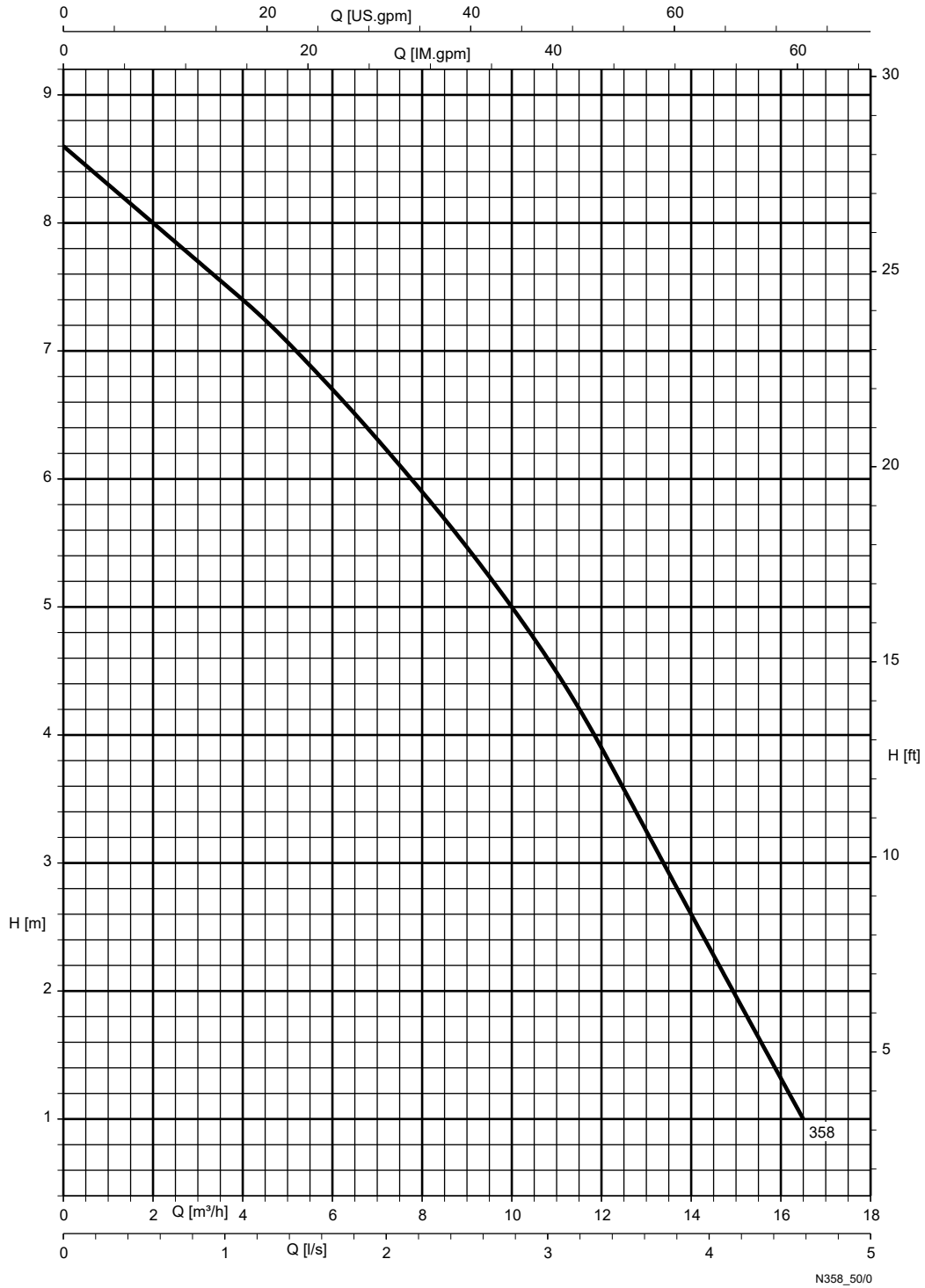


Fig. 1: Sizes 301/302/303: free passage = 10 mm  
Performance tolerance to ISO 9906, Annex A (water under standard conditions)

2332.511/01-EN



AmaDrainer 358, n = 2800 rpm (F impeller)



**Fig. 2:** Size 358: free passage = 35 mm  
Performance tolerance to ISO 9906, Annex A (water under standard conditions)

2332.511/01-EN

Dimensions and connections

AmaDrainer 301/302/303/358

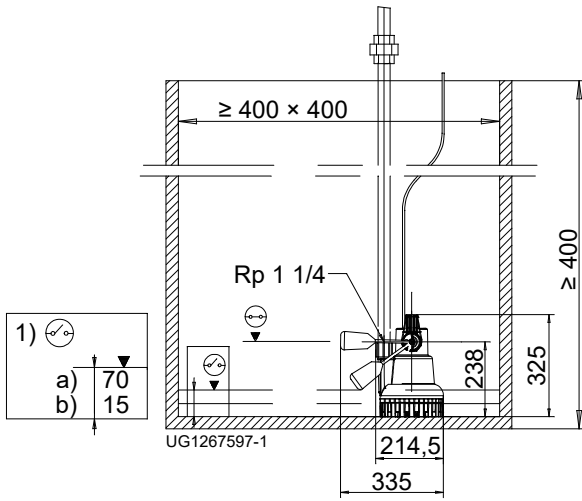


Fig. 3: Dimensions of AmaDrainer 301

1)	Residual water level
a)	Automatic
b)	Manual

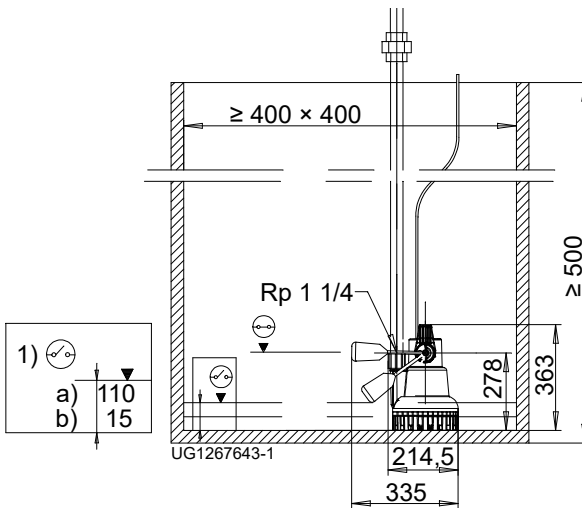


Fig. 4: Dimensions of AmaDrainer 302/303

1)	Residual water level
a)	Automatic
b)	Manual

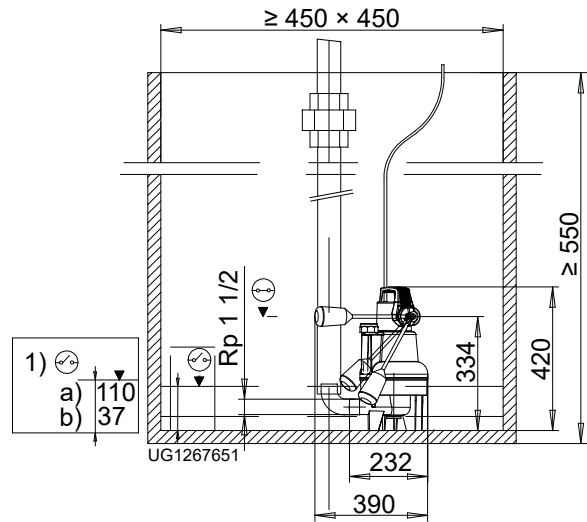


Fig. 5: Dimensions of AmaDrainer 358

1)	Residual water level
a)	Automatic
b)	Manual

Installation information

Installation example of a dual-pump station

- i** Dual-pump stations are operated via an external control system. For this purpose, the float switch suspension must be locked in place using the locking disc included in the scope of supply.
- i** The inlet is positioned above the highest float switch.

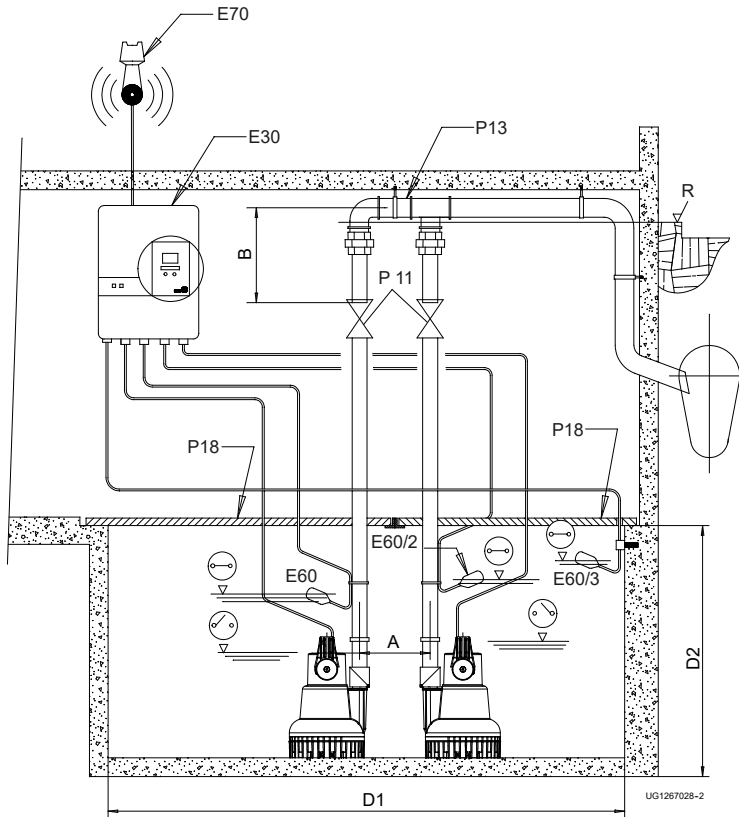


Fig. 6: Installation example of an AmaDrainer 301/302/303 dual-pump station

1)	Residual water level
a)	Automatic
b)	Manual
E30	Control unit
E60	Float switch, base load
E60/2	Float switch, peak load
E60/3	Float switch, high water alert
E70	Horn
P11	Gate valves
P13	Y-pipe
P18	Cover plate
R	Flood level

Table 7: Dimensions of an AmaDrainer 301/302/303 dual-pump station

Size	A	B	D1	D2
	[mm]	[mm]	[mm]	[mm]
301	275	320	1060 × 500	400
302	275	320	1060 × 500	500
303	275	320	1060 × 500	500

2332.511/01-EN

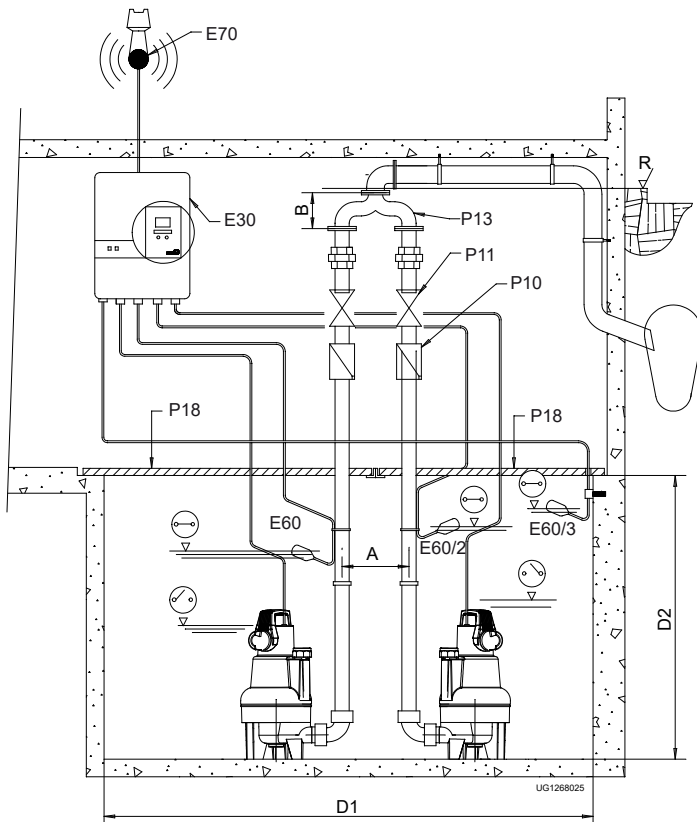


Fig. 7: Installation example of an AmaDrainer 358 dual-pump station

1)	Residual water level
a)	Automatic
b)	Manual
E30	Control unit
E60	Float switch, base load
E60/2	Float switch, peak load
E60/3	Float switch, high water alert
E70	Horn
P10	Lift check valve
P11	Gate valves
P13	Y-pipe
P18	Cover plate
R	Flood level

Table 8: Dimensions of an AmaDrainer 358 dual-pump station

Size	A	B	D1	D2
	[mm]	[mm]	[mm]	[mm]
358	275	180	1060 × 500	550

**Scope of supply**




Depending on the model, the following items are included in the scope of supply:

- Pump set
- Installation/operating manual
- Locking disc for continuous operation
- Sizes 301/303/303:
  - Integrated swing check valve
  - Connection socket with internal thread
- Size 358:
  - 90° bend (cross-section 1 1/2 inches) for discharge outlet to the top

**Accessories**
**Pump accessories**
**Table 9:** Pump accessories

Item	Description	Connection	AmaDrainer				Mat. No.	[kg]
			301	302	303	358		
P5 	Discharge-side adapter, graded For connecting various discharge lines (connections Rp 1 1/4 to Rp 3/4, DN 25 or DN 32)	Rp 1 1/4 to Rp 3/4, DN 25 or DN 32	X	X	X	-	05086820	0.16
P10 	RK swing check valve Plastic, EN 12050-4, with internal thread ISO 7/1, with full bore and drain plug	Rp 1 1/4	X	X	X	-	01009771	0.1
		Rp 1 1/2	-	-	-	X	01009772	0.52
P10 	Lift check valve, stainless steel (1.4401)	Rp 1 1/4	X	X	X	-	01084936	2.1
		Rp 1 1/2	-	-	-	X	01084935	2.2
P11 	Socket gate valve Material: CuZn, PN 16, with internal thread, with full bore	Rp 1 1/4	X	X	X	-	01014219	0.63
		Rp 1 1/2	-	-	-	X	00411502	0.78
P13 	Y-pipe For dual-pump sets, with external thread, galvanised steel	Rp 1 1/4	X	X	X	-	18040311	4.1
P13 	Y-pipe For dual-pump sets, grey cast iron, with hexagon head bolts, nuts and gaskets; flanges drilled to DIN 2501	DN 40	-	-	-	X	40000688	10.6
P18 	Cover plate Tread-proof, split, with profile seals and angle iron mounting frame (type A 560) for 500 x 500 mm pits (For dual-pump stations with Y-pipe 2 cover plates are fitted next to each other.)	Rp 1 1/4	X	X	X	X	18075627	13
P21 	A 25 B drain hose set (see P32) Comprising: rigid coupling with external thread, 6 m plastic hose DN 25, rapid-action hose coupling Rp 1 1/4, (free passage 21 mm)	Rp 1 1/4	X	X	X	-	18079719	3
P24 	Storz rigid coupling with internal thread to DIN ISO 228/1 Aluminium alloy, required pipe part see P32 Can be combined with P28	C-G 1 1/2	X	X	X	X	01002463	0.3
P26 	Storz hose coupling Required counterpart see P24	C 52 (DIN 14321)	X	X	X	-	00524551	0.3
P28 	Synthetic hose DN 40, with integrated C couplings, DIN 14811 Required pipe part see P32 Can be combined with P24	C 42-5 m	X	X	X	X	01062592	1.7
		C 42-10 m	X	X	X	X	01062593	2.8
		C 42-20 m	X	X	X	X	01062594	5
	Synthetic hose DN 50, DIN 14811, with integrated C couplings Required pipe part see P32 Can be combined with P24	C 52-5 m	X	X	X	X	00522262	2.3
		C 52-10 m	X	X	X	X	00522263	4.2
		C 52-20 m	X	X	X	X	00522264	5.7






2332.511/01-EN

Item	Description	Connection	AmaDrainer				Mat. No.	[kg]
			301	302	303	358		
P29 	Threaded flange for Y-pipe (P13), internal thread	DN 40 / Rp 1 1/2	-	-	-	✗	00260478	1.8
P31 	Bellmouth for draining residual water	-	✗	✗	✗	-	39300101	0.2
P32 	Pipe extension for Storz rigid coupling C (P24) PVC hard, internal/external thread For use without swing check valve and union nut	Internal thread Rp 1 1/4 / external thread R 1 1/2 x 170	✗	✗	✗	-	11035587	0.2

### Control units and switchgear

Not valid for France.

**Table 10:** Control units and switchgear

Item	Description	1-230 V	Type	AmaDrainer				Mat. No.	[kg]
				301	302	303	358		
E 1 	MSE switchgear	X	25.1	X	-	-	-	19070136	1
	For float switch		60.1	-	X	X	X	19070138	1
	With integrated motor protection relay, thermal motor protection, manual-0-automatic selector switch, operation and fault indicator lamps								
	Dimensions (W x H x D) 100 x 170 x 112 mm								
E10 	LevelControl Basic 2 control unit for single-pump station, IP54	X	BC1 230 DFNO 100	X	X	X	X	19073760	4.5
	DOL starting, with manual-0-automatic selector switch, indicator lamps and control panel, high water alert, integrated alarm buzzer 85 dB(A), operating hours counter/start-stop cycles per pump, voltage measurement, phase monitoring, indication of water level, volt-free contact for general fault message, motor temperature warning (thermal circuit breaker) – self-acknowledging; motor leakage/moisture monitoring, optional mains-independent alarm via rechargeable battery (E90)								
	For float switch or 4 - 20 mA sensor, optionally with master switch, 400 x 281 x 135 mm								
E30 	LevelControl Basic 2 control unit for dual-pump station, IP54	X	BC2 230 DFNO 100	X	X	X	X	19073774	4.7
	Peak load operation, stand-by pump, DOL starting, with manual-0-automatic selector switch, indicator lamps and control panel, high water alert, integrated alarm buzzer 85 dB(A), operating hours counter/start-stop cycles per pump, pneumatic: indication of water level, voltage measurement, phase monitoring, volt-free contract for general fault message, 230 V variant: with external socket, 400 V variant: with motor protection switch, optional mains-independent alarm via rechargeable battery								
	For float switch or 4 - 20 mA sensor, optionally with master switch, 400 x 281 x 135 mm								
<b>Optional components for LevelControl<sup>4)</sup></b>									
O1 	Master switch for LevelControl Basic 2 BC, fitted	-	-	X	X	X	X	01143084	0.19
O200 	Signalling module for LevelControl Basic 2 BC	-	-	X	X	X	X	19075182	0.78

<sup>4</sup> Process optional components via KSB EasySelect, otherwise they might be supplied but not fitted.



## LevelControl Basic 2 control units

Not valid for France.

**Table 11:** Symbols key

Symbol	Description
o	Optional
x	Available
-	Not available






**Table 12:** Overview of LevelControl Basic 2 control units

Feature	Single-pump station Float switch or 4-20 mA sensor	Dual-pump station Float switch or 4-20 mA sensor
230 V: up to 10.0 A	BC1 230 <sup>DFNO</sup> 100	BC2 230 <sup>DFNO</sup> 100
<b>Functions</b>		
Draining	x	x
Filling using float switch(es)	x	x
Stand-by pump: 1 pump redundant	-	x
Pump changeover after each start	-	x
Pump changeover in event of pump fault	-	x
Peak load operation function	-	x
Runtime limitation	x	x
OFF via after-run time	x	x
OFF via level	x	x
Functional check run after idle period	x	x
Alert history	x	x
<b>Display and operation</b>		
7-segment display	x	x
Indication of water level	Switching points	Switching points
Operation / fault / pump running (displayed for each pump)	Multicolour LED	Multicolour LED
General fault (traffic light)	LED	LED
High water	LED	LED
Mains voltage	x	x
Mains frequency	-	-
Motor current per pump	-	-
Operating hours of each pump	x	x
Operating hours of the system	-	-
Starts per pump	x	x
Effective power per pump	-	-
Phase monitoring	x	x
Change of switching levels via control panel (for 4-20 mA only)	x	x
<b>Housing H x W x D [mm], IP54</b>		
Plastic 400 x 281 x 135	x	x
Sheet steel 400 x 300 x 155	-	-
Sheet steel 600 x 400 x 200	-	-
<b>Built-in components</b>		
Master switch (lockable)	o	o
Manual-0-automatic selector switch per pump	x	x
DOL starting	x	x
Star-delta starting	-	-
Shockproof socket 230 V	x	x
<b>Motor protection</b>		
Overcurrent protection device per pump	x	x
Motor protection switch per pump (overcurrent protection and short-circuit protection)	o	o
Motor temperature warning input	x	x
Motor temperature alert input	x	x
<b>Pump</b>		
Thermal circuit breaker (TCB) / bimetal switch per pump	Bimetal switch in the motor	Bimetal switch in the motor
<b>Optional components</b>		

Feature	Single-pump station Float switch or 4-20 mA sensor	Dual-pump station Float switch or 4-20 mA sensor
Rechargeable battery for powering the device	o	o
<b>Alarm equipment</b>		
1 free alarm input	x	x
1 digital input for high water alert	x	x
Volt-free contact (changeover contact) for general fault message / "in operation" message	x	x
Piezo buzzer 85 dB(A)	x	x
Horn / alarm combination / alarm strobe light 12 V DC	o	o
<b>Inputs/outputs</b>		
Inputs for float switches	4	4
4-20 mA analog input	x	x
Integrated pneumatic pressure sensor up to 3 metres of water (up to 10 metres on request)	-	-
Bubbler control with compressor up to 2 metres of water	-	-
Remote acknowledgement	x	x
12 V DC connection for horn, etc.	x	x
<b>Sensors</b>		
Float switch (NO contact)	o	o
F1 leakage sensor	o	o
<b>Tools</b>		
KSB ServiceTool	o	o

### Alarm switchgears for pumps, non-ATEX-compliant




**Table 13:** AS0 / AS1 / AS2 / AS4 / AS5

Item	Description	Mat. No.	[kg]
E50 	Alarm switchgear AS0 With circuit breaker, acoustic signalling device with 85 dB(A), green equipment-on lamp Plastic housing, IP20, H x W x D = 140 x 80 x 57 [mm]. Use float switch, F1 leakage sensor (item E64), M1 alarm contactor or signal relay of control unit as contactor.	29128401	0.5
E51 	Alarm switchgear AS2 With circuit breaker, acoustic signalling device with 85 dB(A), green equipment-on lamp, volt-free contact for hook-up to a control station Plastic housing, IP20, H x W x D = 140 x 80 x 57 [mm]. Use float switch, F1 leakage sensor (item E64) or signal relay of control unit as contactor.	29128422	0.5
E52 	Alarm switchgear AS4 With circuit breaker, acoustic signalling device with 85 dB(A), green equipment-on lamp, volt-free contact for hook-up to a control station, self-charging power supply unit for 5 hours of operation in the event of a power failure Plastic housing, IP20, H x W x D = 140 x 80 x 57 [mm]. Use float switch (E60), F1 leakage sensor (item E64) or signal relay of control unit as contactor.	29128442	0.5
E53 	Alarm switchgear AS5 Mains-independent, with self-charging power supply unit for 10 hours of operation in the event of a power failure, mains pilot LED, fault indicator light, acknowledgement button, volt-free contact for hook-up to a control station, ready for connection with 1.8 m power cable and plug. ISO housing, IP41, H x W x D = 165 x 190 x 75 [mm]. Use float switch (E60) or signal relay of control unit as contactor.	00530561	1.7
E55 	Alarm switchgear AS1 In IP30 ISO plug housing, mains-independent, with self-charging power supply unit for 5 hours of operation in the event of a power failure, acoustic signalling device 70 dB(A) with circuit breaker and integrated signal transmitter with 3-metre power cable, max. 60 °C, not suitable for steam and condensate. 1. High water alert by suspending the sensor in a (pump) sump above the pump start-up point. 2. Water alert signal at a water level of only 1 mm by placing the sensor on the floor in areas with a flooding or leakage risk, e.g. the cellar or next to the washing machine in the kitchen or bathroom.	00533740	0.9

**Control unit / switchgear accessories**
**Table 14:** Control unit / switchgear accessories

Item	Description	Length of electric cable / flexible tube	AmaDrainer				Mat. No.	[kg]
		[m]	301	302	303	358		
 E60 Float switch with free cable end Function: circuit closed in upper float position (NO contact) Float switch housing: polypropylene Fluid temperature: ≤ 70 °C Power cable: H07RN-F3G1	3	X	X	X	X	11037742	0.5	
	5	X	X	X	X	11037743	0.74	
	10	X	X	X	X	11037744	1.28	
	15	X	X	X	X	11037745	1.84	
	20	X	X	X	X	11037746	2.25	
	25	X	X	X	X	11037747	2.9	
	30	X	X	X	X	11037748	3.4	
 E60.1 Float switch with shockproof plug Function: circuit closed in upper float position (NO contact) Float switch housing: polypropylene Fluid temperature: 70 °C max. Power cable: H07RN-F3G1	3	X	X	X	X	11037749	1.1	
	5	X	X	X	X	11037750	1.3	
	10	X	X	X	X	11037751	1.29	
 E61 Float switch with free cable end, oil-resistant Function: circuit closed in upper float position (NO contact) Float switch housing: polypropylene Fluid temperature: 70 °C max. Power cable: PUR 3×1.0 mm <sup>2</sup>	5	X	X	X	X	11037753	0.8	
	10	X	X	X	X	11037754	1.2	
	20	X	X	X	X	11037755	2	
 E62 Float switch with free cable end <sup>5)</sup> Function: circuit open in upper float position (NC contact) Float switch housing: polypropylene Fluid temperature: 70 °C max. Power cable: H07RN-F3G1	5	X	X	X	X	11037756	0.8	
	10	X	X	X	X	11037757	1.4	
	20	X	X	X	X	11037758	2.6	
 E64 F1 leakage sensor Contactor for alarm switchgears AS 0, AS 2, AS 4 or as alarm transmitter for LevelControl Basic 2 Alarm transmission options: High water alert by suspending the sensor in a (pump) sump above the pump start-up point. Warning at a water level of 1 mm in areas with a flooding or leakage risk (e.g. in the basement or next to the washing machine in the kitchen or bathroom) Dimensions [mm]: 52 × 21 × 20 (H × W × D)	3 m	X	X	X	X	19072366	0.2	
 E70 Horn, 12 V DC, 105 dB, 150 mA, IP54 Suitable for indoor installation and outdoor installation. Protect against moisture.	-	X	X	X	X	01086547	0.09	
 E71 Alarm combination, 12 V DC	-	X	X	X	X	01139930	0.1	
 E72 Yellow alarm strobe light, 12 V DC, 195 mA, IP65	-	X	X	X	X	01056355	0.14	
 O45 Plastic housing, IP65, for easier installation of alarm strobe light, for wall mounting	-	X	X	X	X	01061067	0.2	

<sup>5</sup> Not suitable for LevelControl Basic 2

Item	Description	Length of electric cable / flexible tube	AmaDrainer				Mat. No.	[kg]
		[m]	301	302	303	358		
E73 	KSB ServiceTool	-	X	X	X	X	47121210	0.2
E80 	Safety switch STECKMAT trips in approx. 0.03 seconds, from approx. 0.03 A 230 V / 10 A	-	X	X	X	X	00534217	0.5
E90 	Rechargeable battery retrofit kit for LevelControl Basic 2, type BC Scope of supply: 2 rechargeable batteries (6 V, 1.3 Ah) and charge controller	-	X	X	X	X	19074194	0.8

Exploded view and list of components

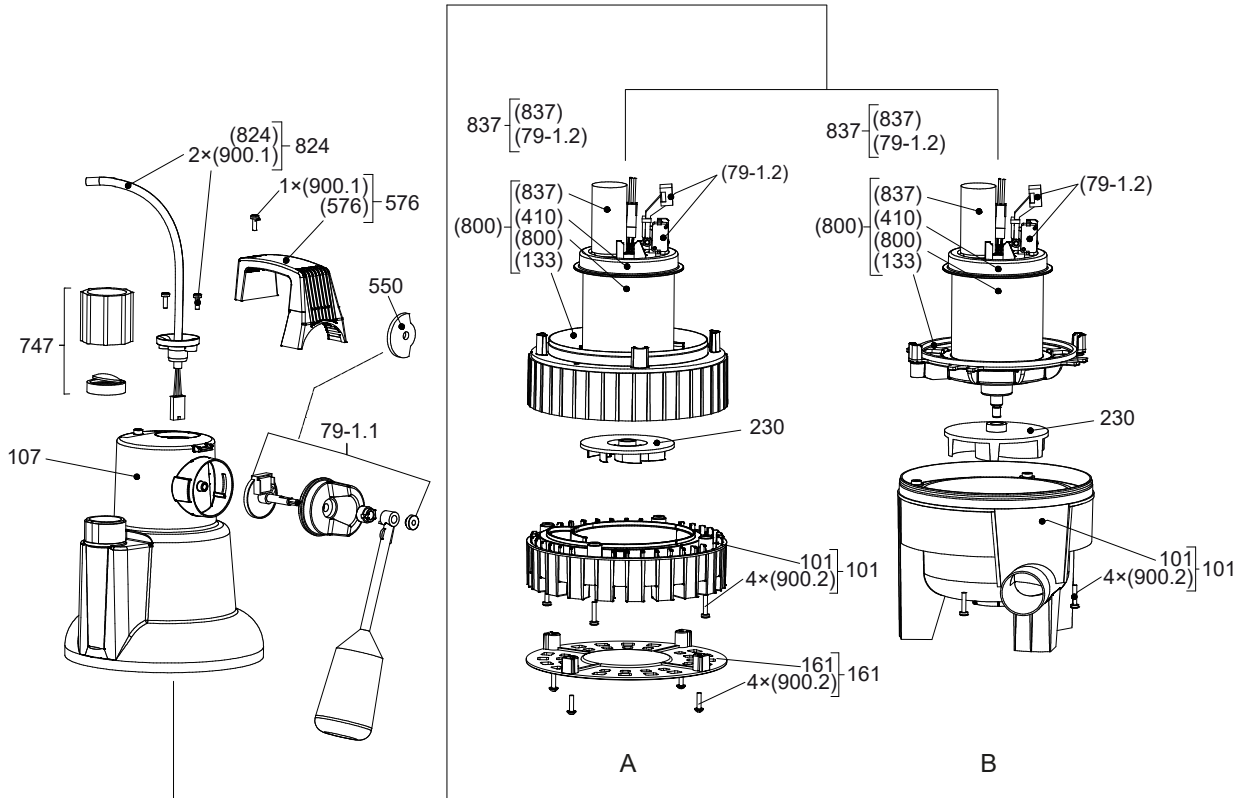


Fig. 8: Exploded view

A	AmaDrainer 301/302/303
B	AmaDrainer 358

Table 15: List of components

Part No.	Description	Part No.	Description
101	Pump casing	576	Handle
107	Discharge casing	747	Swing check valve
161	Casing cover	79-1.1	Automatic switchgear, external
230	Impeller	800	Motor
550	Locking disc for continuous operation	824	Power cable





**KSB SE & Co. KGaA**  
Johann-Klein-Straße 9 • 67227 Frankenthal (Germany)  
Tel. +49 6233 86-0  
[www.ksb.com](http://www.ksb.com)

2025-09-10

2332.511/01-EN