



# Globe valve

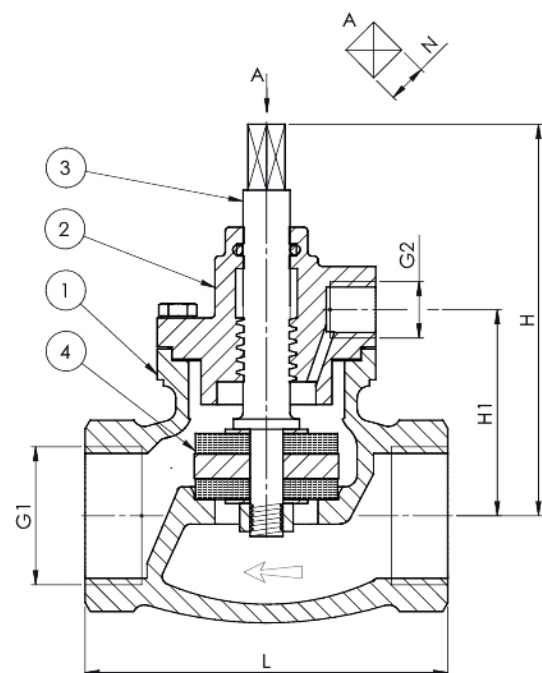
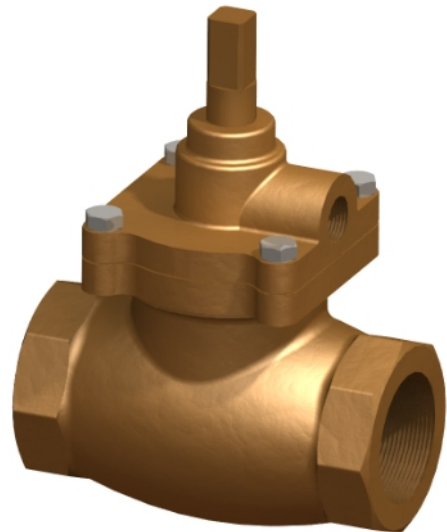
## 314122

### DESCRIPTION

When the valve is closed it is self-draining for the part of the system that is in the outlet side of the valve. The valve must be either fully opened or fully closed.

No.	Part	Material
1	Body	Bronze CC491K (RG5)
2	Bonnet	Bronze CC491K (RG5)
3	Stem	Special brass CW710R (SoMs59)
4	Gasket	Leather

DN	Max. working pressure (bar) Up to 30°C
20-50	16



DN	G1 (BSP)	G2	Pressure rating	L	N	H	H1	Kv-value	Kg
20	G 3/4"	G 1/4"	PN 16	75	9	115	41	8	0,8
25	G 1"	G 1/4"	PN 16	90	9	125	50	12	1,1
32	G 1 1/4"	G 1/4"	PN 16	105	10	150	57	20	1,8
40	G 1 1/2"	G 1/4"	PN 16	120	12	170	60	30	2,6
50	G 2"	G 1/4"	PN 16	145	12	175	70	47	3,8

All measurements in mm. Weights are approximations.