

8

7

6

5

4

3

2

1

D

D

C

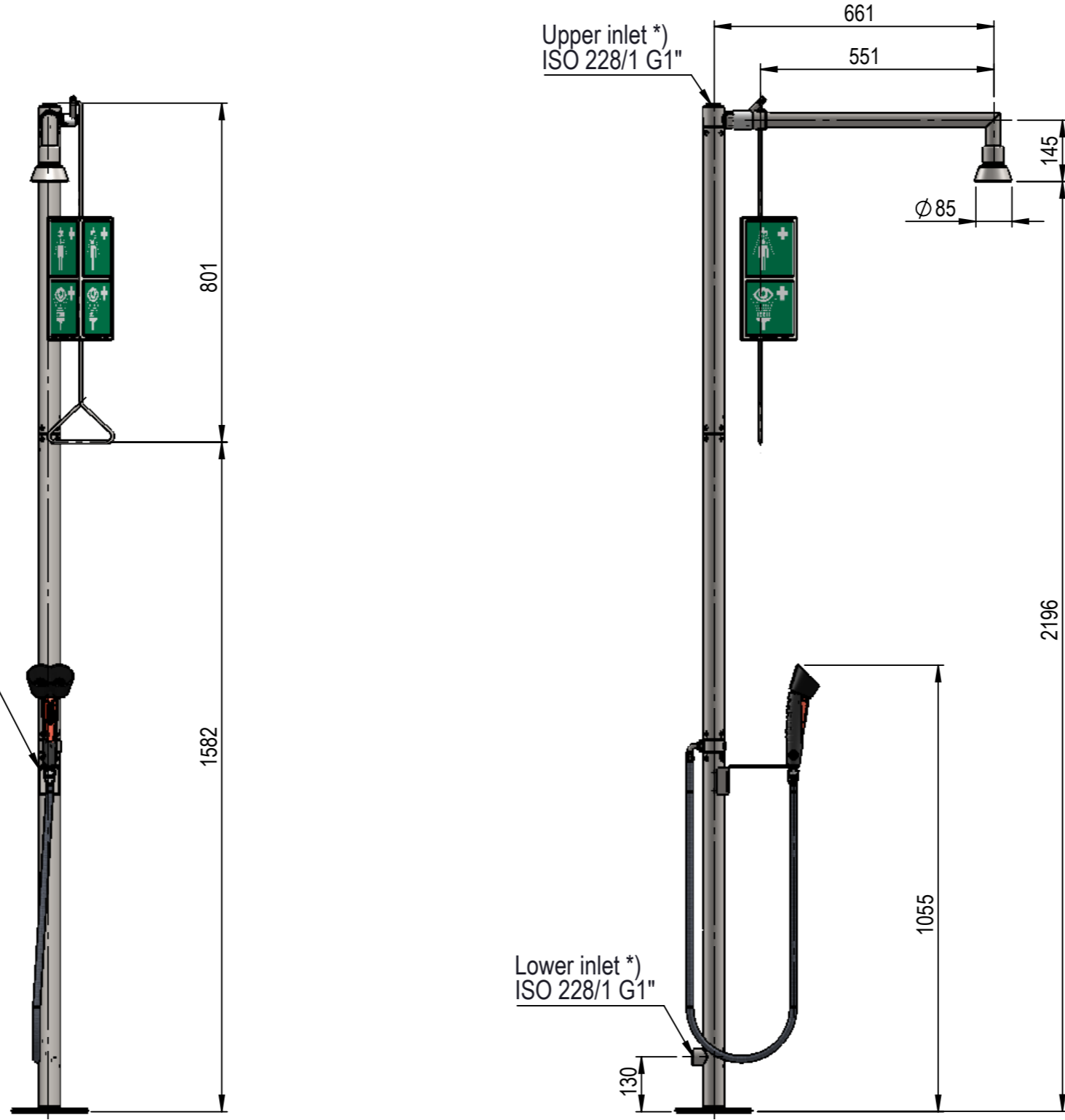
C

B

B

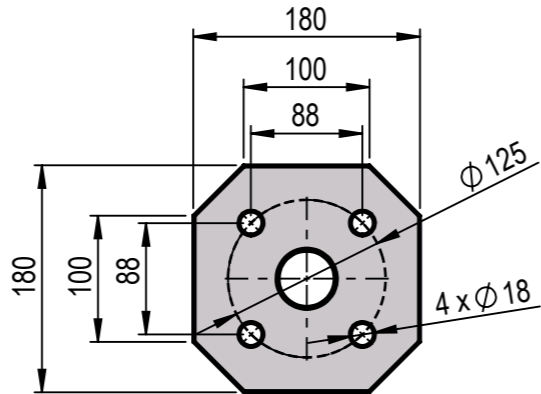
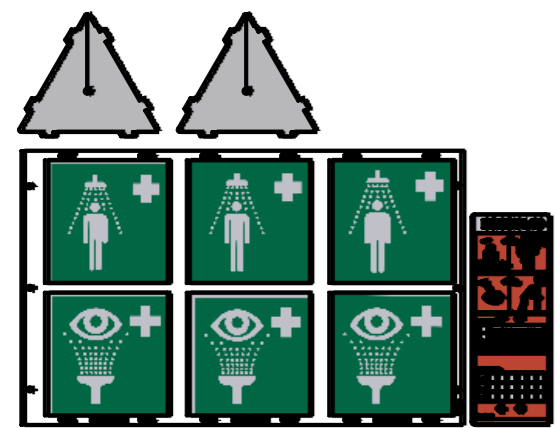
A

A



Bracket for handheld eyeshower can be placed to the left, to the right or same direction as the bodyshower (Shown here)

Signs & Instructions: 17001920



Floor flange

*) The inlet not used must be plugged with the supplied plug

Description: , , Combination Shower, wall, 316SS, Modular, ,										
								Media: Water		
								Comments: Exposed pipework		
								Drawing type: Customer drawing		
								Weight: 16.128		
Rev.	Pos.	Date	TM No.	Design by	Drawn by:	Change:	Designed by: LBH	Drawn by: PEC	Released on TM No.	
									Date (DD-MM-YY): 11-11-24	
BROEN-LAB							Format: A3		Drawing No.: 28413011021000	
							This drawing is our property and cannot be given to a third party, copied or otherwise used without our permission. BROEN-LAB A/S.			

8

7

6

5

4

3

2

1