

Area of Application:
Bench mounted
Water

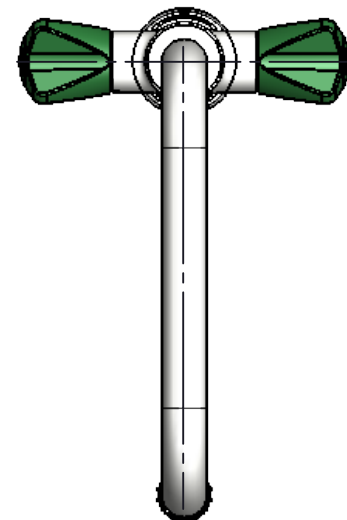
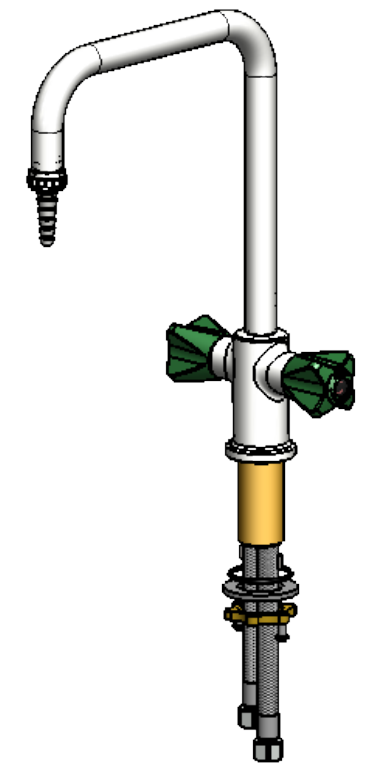
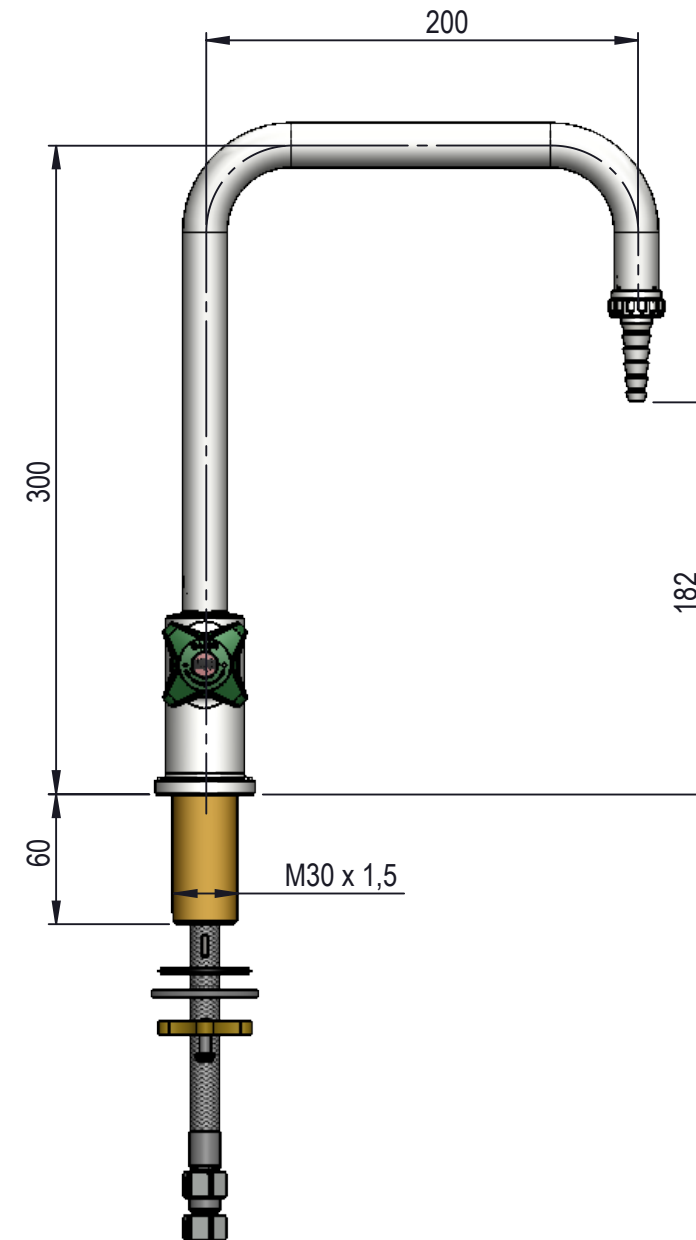
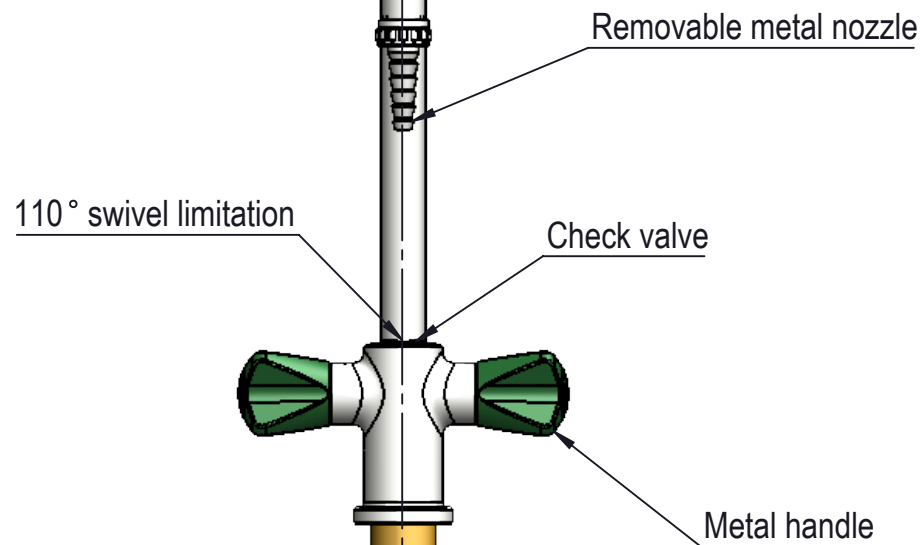
Max. working pressure 10 bar
Min. temperature 5°C
Max. temperature 65°C

Details:
Ceramic headwork open/close 180°
3-Zone colour, acc. to EN13792:2002
Swivel spout 110deg
1/2" removable nozzle

Materials in media contact:
Brass
Rubber. EPDM
Silicone based lubricant
POM

Mounting:
M30 nut with locking pinns o-ring and washer

Inlet / outlet connection:
DN8 hose with G3/8 female inlet
DIN 12 898 hose nozzle



Description: 2-Hand.Mix, Bench mounted, 1-Hole, Rem. Nozzle, DIN 12 898 hose nozzle									
							Media: Water		
							Comments:		
							Drawing type: Customer drawing		Weight: 1.675 Kg
Rev.	Pos.	Date	TM No.	Design by	Drawn by:	Change:	Designed by: VJE	Drawn by: SJE	Released on TM No. 01-12-2017
BROEN-LAB						This drawing is our property and cannot be given to a third party, copied or otherwise used without our permission. BROEN-LAB A/S.	Format: A3	Drawing No.: 25364528039-52D	