

4

3

2

1

Area of Application:

Water

Max. working pressure 10 bar
Temperature range 5°C-90°C

Details:

Removable nozzle

Materials in media contact:

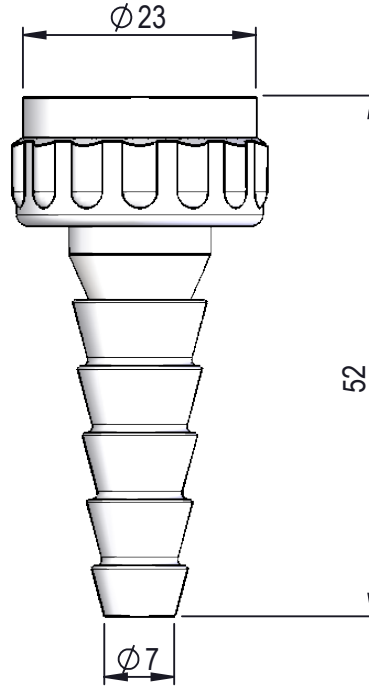
Brass
Rubber, EPDM
Silicone based lubricant

Mounting:

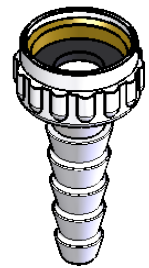
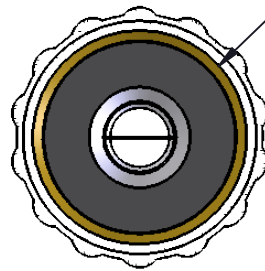
ISO228/1 - G1/2"

Inlet / outlet connection:

ISO228/1 - G1/2"
DIN 12 898 hose nozzle



Female ISO228/1-G1/2



Description:

Removable DIN 12 898 hose nozzle

Media:		Water	
Comments:			
Drawing type:		Customer drawing	
Weight:		0,045 Kg	

Rev.	Pos.	Date	TM No.	Design by	Drawn by:	Change:	Designed by:	Drawn by:	Released on TM No.	Date:
							ROE	PEC		25-02-21

BROEN-LAB		This drawing is our property and cannot be given to a third party, copied or otherwise used without our permission. BROEN-LAB A/S.		Format:	Drawing No.:	2539008
				A4		

4

3

2

1