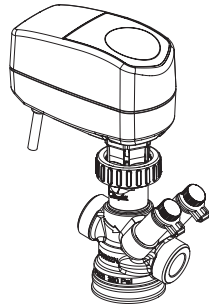
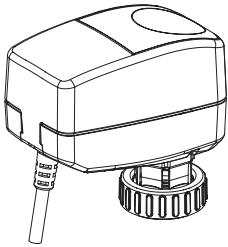


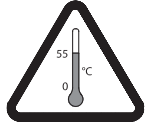
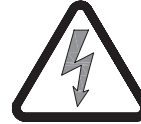
Operating Guide

AME 110 NL/NLX / 73690510

AME 110 NL/NLX



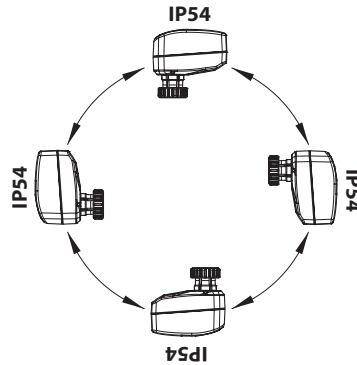
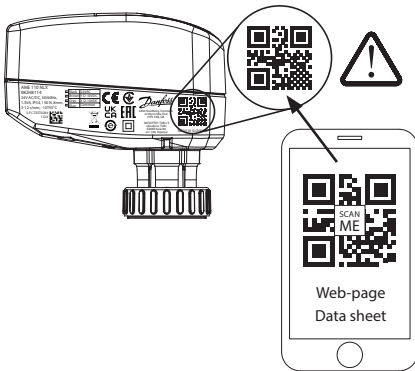
AME 110 NL/NLX +
AB-QM DN 15-32



MAINTENANCE
FREE

5-95 % RH
no condensing

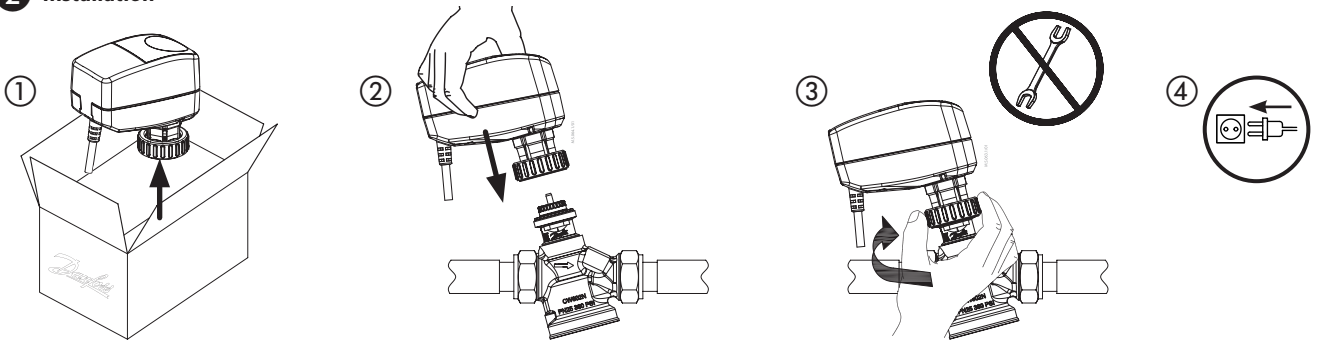
1 Info and wiring



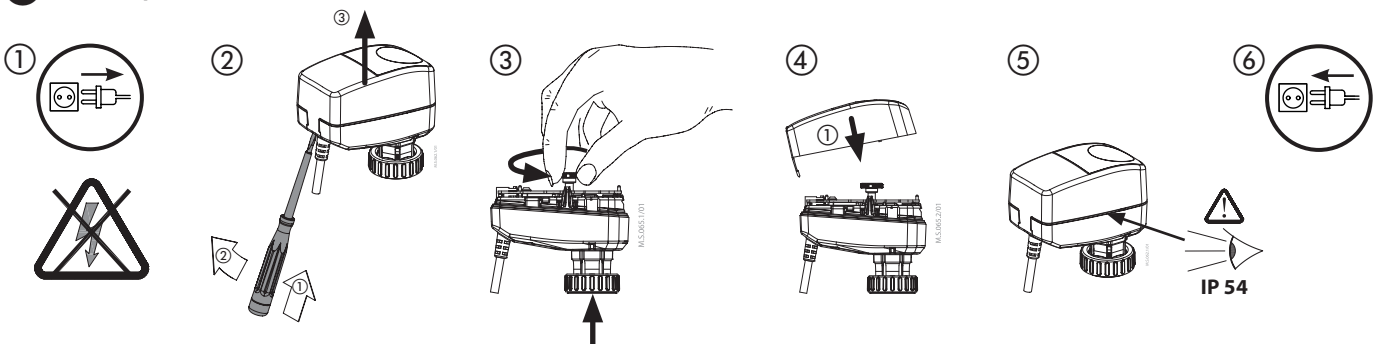
AME 110 NL		
Black	Common (-)	
Brown	24 V (+)	
Grey	Y (0-10 V)	

AME 110 NLX		
Black	Common (-)	
Brown	24 V (+)	
Grey	Y (0-10 V)	
Blue	X (0-10 V)	

2 Installation

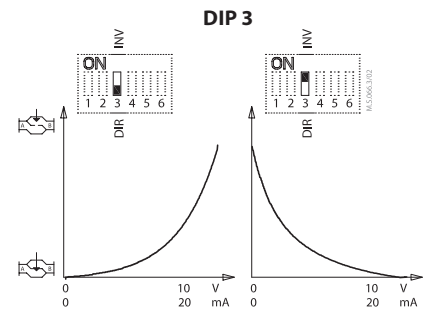
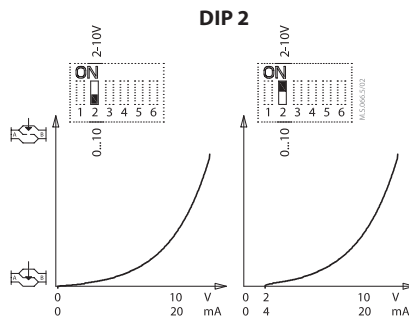
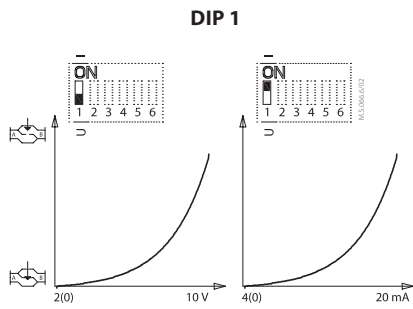
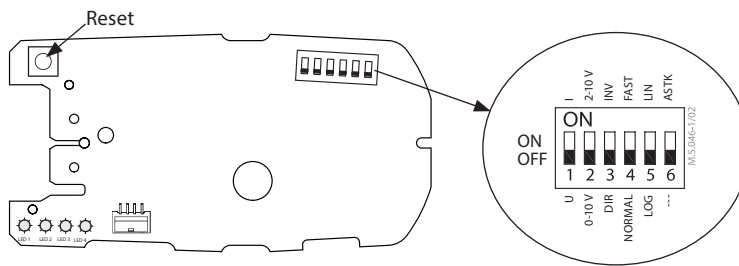


3 Manual operation



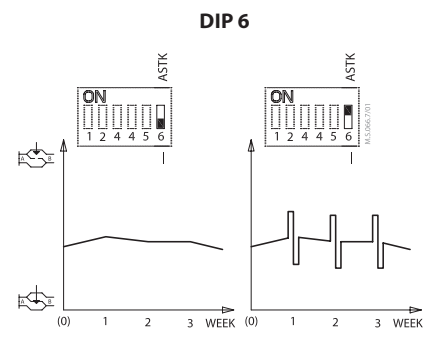
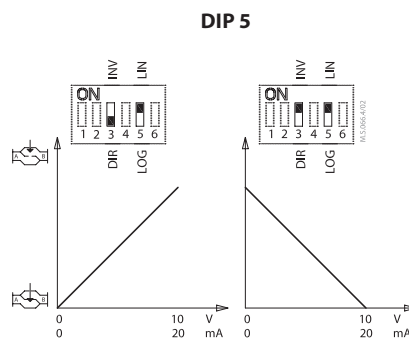
AME 110 NL/NLX

4 DIP switches

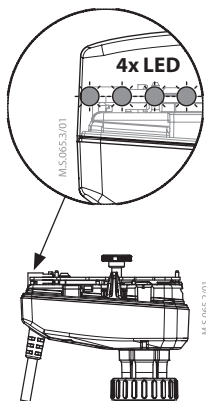


DIP 4

12 sec/mm		3 sec/mm	
d [mm]	t [sec]	d [mm]	t [sec]
2	24	2	6
4	48	4	12
8	96	8	24



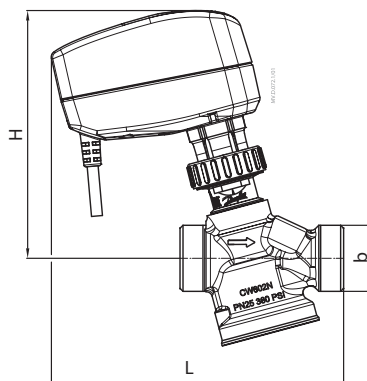
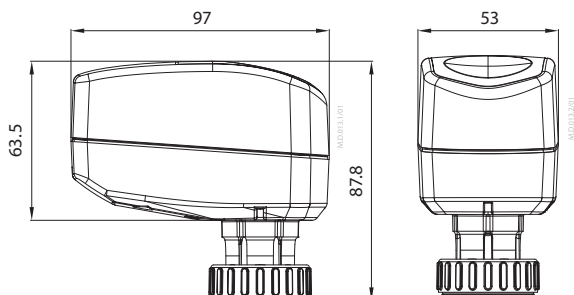
5 LED



Calibration			
Movement			
Opening			
Closing			
Position			
Closed 0%		Open 50-74%	
Open 1-24%		Open 75-99%	
Open 25-49%		Open 100%	
Reset (button)	Press reset button, keep pressing until:		
Under 1 second = Calibration		1 second	
2 seconds = Turn OFF/ON LED indication		2 second	
		3 second	
	Calibration	OFF/ON LED	
Alarm / Warning			
Error during calibration			
Missing control signal			
Agenda LED color	Green Yellow Red		

AME 110 NL/NLX

6 Dimensions



AME 110 NL/NLX +
AB-QM DN 15-32

Type	L	H	b
	mm		ISO 228/1
DN 15	136.2	122.9	Rp ½
DN 20	144.7	124.9	Rp ¾
DN 25	155.7	129.5	Rp 1
DN 32	168.7	131.5	Rp 1 ¼

7 Safety Note

	<p>To avoid injury of persons and damages to the device, it is absolutely necessary to read and observe these instructions carefully. Necessary assembly, start-up, and maintenance work must be performed by qualified and authorized personnel only.</p>
	<p>Do not remove the cover before the power supply is fully switched off.</p>
	<p>24 VAC/DC Can be connected via Class II or Class III voltage transformer.</p>
	<p>The Data sheet is available online, link is found by scanning the QR code on the side of the actuator.</p>
	<p>Do not touch anything on the PCB, except the DIP switches and Reset button! Switch off the power line before wiring the actuator! Wire the actuator according to the wiring diagram.</p>
<p>Do not manually operate the drive if power is connected!</p>	

	<p>Disposal note</p> <p>This symbol on the product indicates that it may not be disposed of as household waste. It must be handed over to the applicable take-back scheme for the recycling of electrical and electronic equipment.</p>
	<ul style="list-style-type: none"> • Dispose of the product through channels provided for this purpose. • Comply with all local and currently applicable laws and regulations.



ІМПОРТЕР:

UA: ТОВ з ІІ «Данфосс ТОВ», вул. Вікентія Хвойки, 15/15/6, м. Київ, 04080, Україна

Danfoss A/S

Climate Solutions • danfoss.com • +45 7488 2222

Any information, including, but not limited to information on selection of product, its application or use, product design, weight, dimensions, capacity or any other technical data in product manuals, catalogues descriptions, advertisements, etc. and whether made available in writing, orally, electronically, online or via download, shall be considered informative, and is only binding if and to the extent, explicit reference is made in a quotation or order confirmation. Danfoss cannot accept any responsibility for possible errors in catalogues, brochures, videos and other material. Danfoss reserves the right to alter its products without notice. This also applies to products ordered but not delivered provided that such alterations can be made without changes to form, fit or function of the product.

All trademarks in this material are property of Danfoss A/S or Danfoss group companies. Danfoss and the Danfoss logo are trademarks of Danfoss A/S. All rights reserved.
