

Fig. 1

de Einbau- und Betriebsanleitung
 en Installation and operating instructions
 fr Notice de montage et de mise en service
 nl Inbouw- en bedieningsvoorschriften
 es Instrucciones de instalación y funcionamiento
 it Istruzioni di montaggio, uso e manutenzione
 pt Manual de instalação e funcionamento
 el Οδηγίες εγκατάστασης και λειτουργίας
 tr Montaj ve kullanma kılavuzu
 sv Monterings- och skötselmanual
 no Montasje- og bruksanvisning
 fi Asennus- ja käyttöohje
 da Monterings- og driftsvejledning
 hu Beépítési és üzemeltési utasítás
 pl Instrukcja montażu i obsługi
 cs Návod k montáži a provozu
 ru Инструкция по монтажу и эксплуатации
 et Paigaldus- ja kasutusjuhend
 lv Uzstādīšanas un ekspluatācijas instrukcija
 lt Montavimo ir naudojimo instrukcija
 sk Návod na montáž a obsluhu
 sl Navodila za vgradnjo in obratovanje
 sr Uputstvo za ugradnju i upotrebu

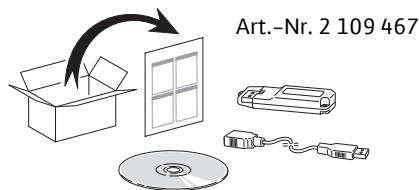


Fig. 3

Fig. 2

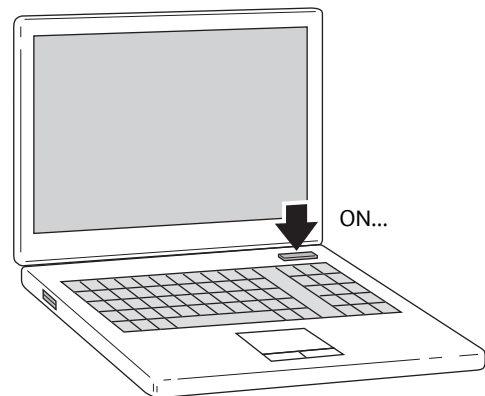
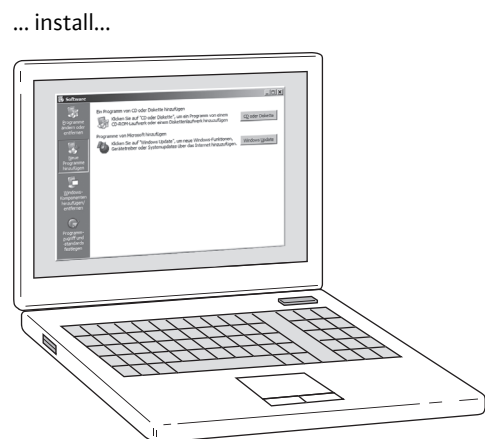


Fig. 4



<http://www.wilo.de/zubehoer>
<http://www.wilo.com/accessories>

Fig. 5

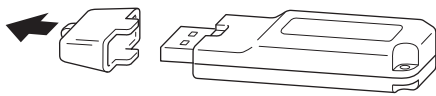
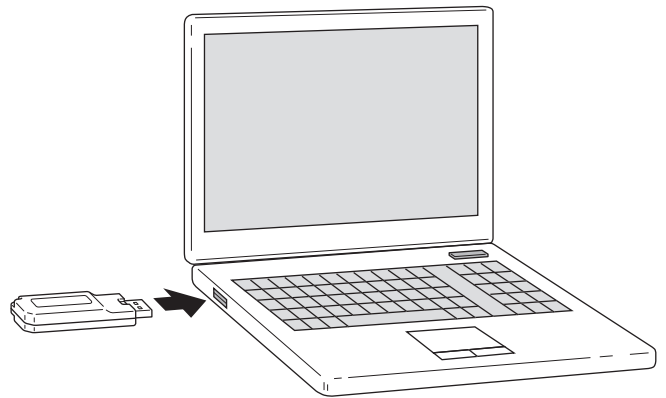


Fig. 6




 USA/Canada:
Caution! Connect only to UL
listed personal computers.

Fig. 7

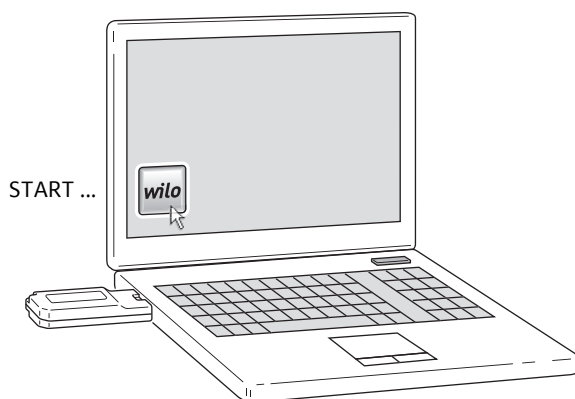


Fig. 8

