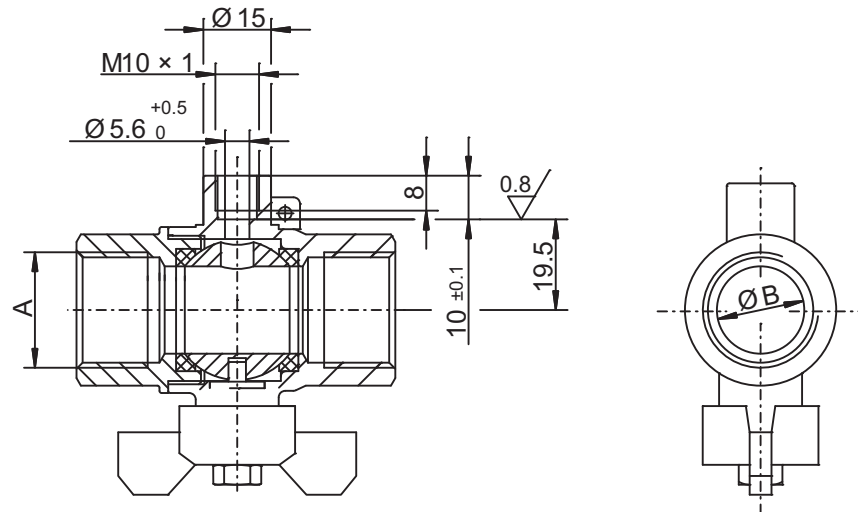


4 Installation

4.1 Temperature probes for direct mounting (902428/50)

If the temperature probe is installed directly, the installation locations must be designed according to the DIN EN 1434-2:2015 standard (see the figure below). The installation must be designed according to the assembly specifications. Make sure that the seal and sealing surface in the installation location are undamaged, clean and dry.



Thread size A	Inner diameter B
G 1/2 B	18.5 mm
G 3/4 B	24 mm
G 1 B	30.5 mm
G 1 1/4 B	39 mm
G 1 1/2 B	45 mm



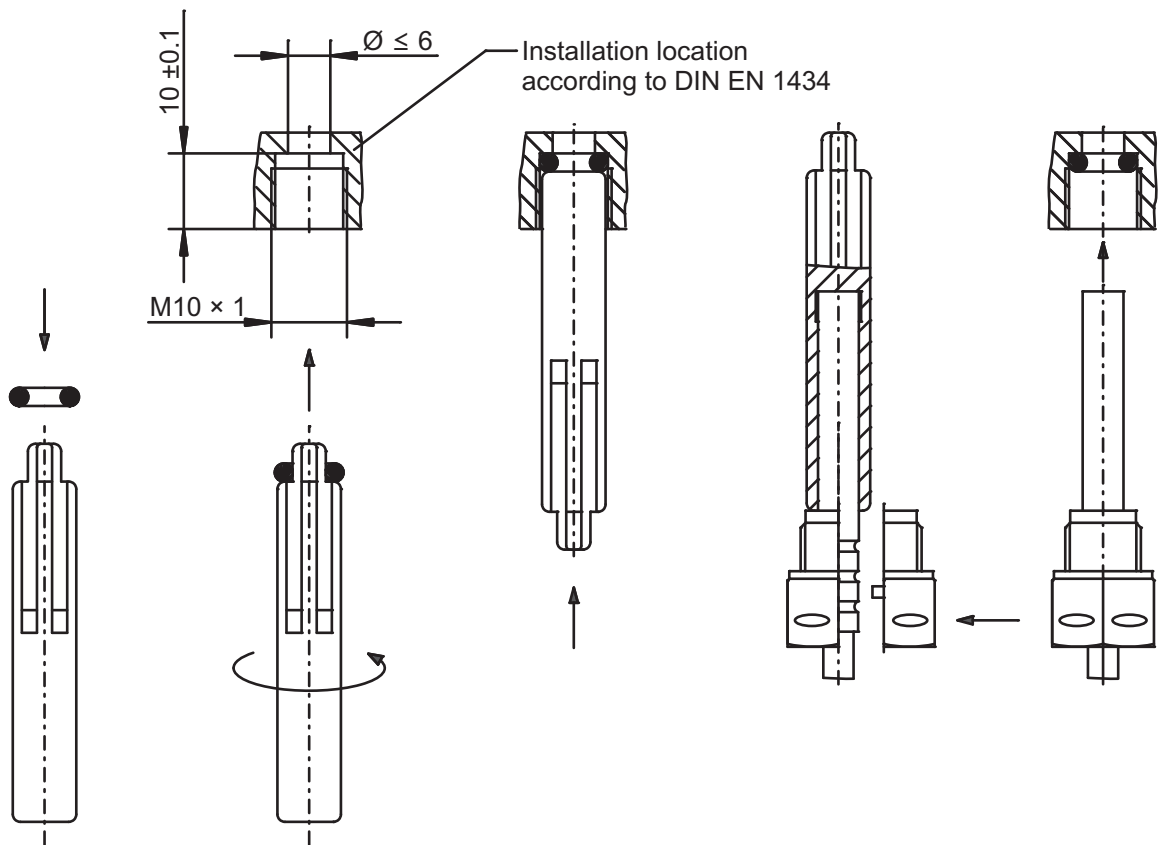
NOTE!

The minimum immersion depth for the temperature probe is 15 mm.



NOTE!

Only temperature probes with diameters of 5.0 mm or 5.2 mm are admissible for direct mounting in ball valves with M10 internal threads.



1. Remove the plug and seal or the old probe and o-ring so that no residue is left behind.
2. Place the o-ring from the supplied mounting set onto the assembly aid.
3. Insert the o-ring with the assembly aid into the installation location according to DIN EN 1434 using a rotating motion.
4. Position the o-ring in the final installation location using the other end of the assembly aid.
5. Pull the end of the assembly aid over the temperature probe sleeve - up to the limit stop in the temperature probe sleeve (to determine the probe installation length).
Grasp the two halves of the black plastic screw directly above the assembly aid and press into the recesses (beads) on the temperature probe sleeve.
Remove the assembly aid from the temperature probe.
Press both halves of the screw connection firmly together.
6. Press the temperature probe with the black plastic quick-release screw into the installation location and screw it in to the limit stop so that it is hand-tight (tightening torque of 3 to 5 Nm).
7. Check that there is no leakage and seal the temperature probe.

NOTE!

A new o-ring must be used after each dismantling process.

