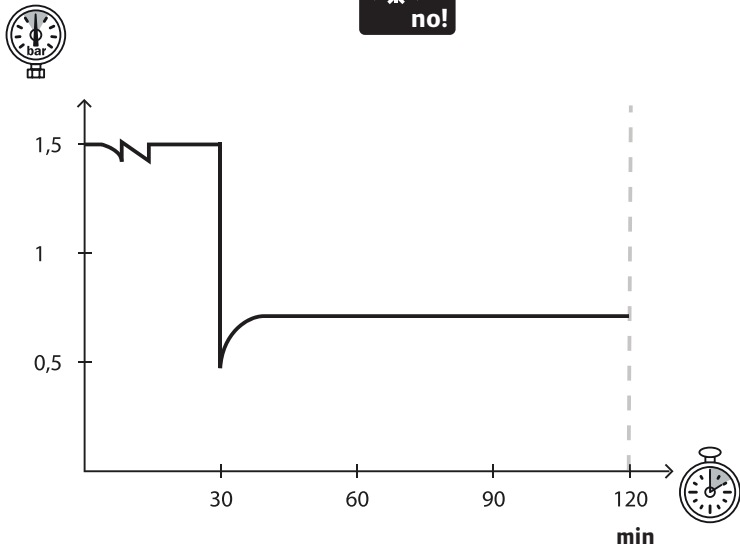


Uponor Q&E NKB
MOUNTING INSTRUCTION

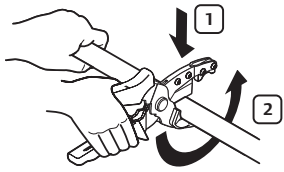
05 | 2014

Test, H₂O

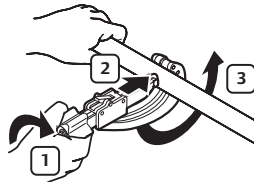


°C	h
>+10	0.1 - 0.25
+10 - +5	0.25 - 0.5
+5 - ±0	1.0 - 1.5
±0 - -5	2.0 - 3.0
-5 - -10	3.0 - 4.0
-10 - -15	7.0 - 8.0

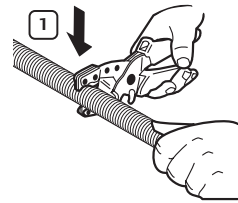
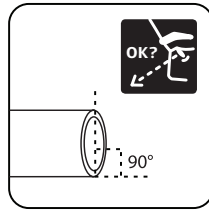




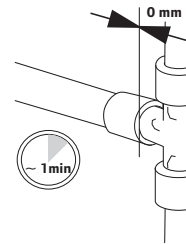
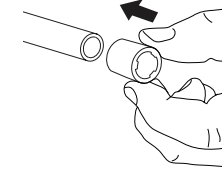
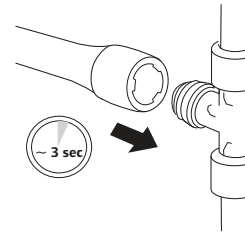
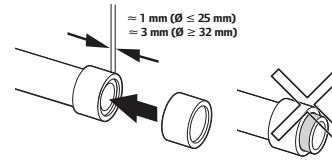
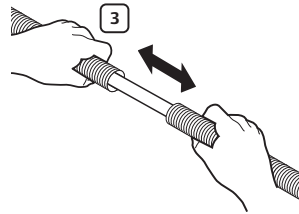
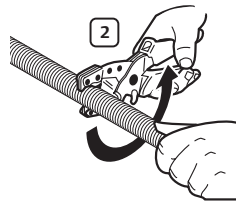
≤ 25 mm



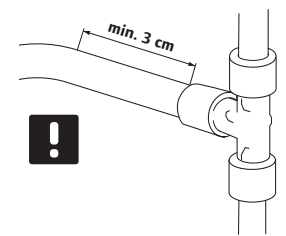
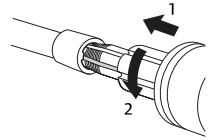
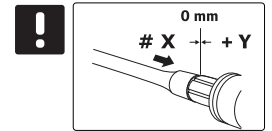
≥ 25 mm



< 25 mm



*) M12 + M18



Pipe Size	Length	Q&E	Fitting	Temperature				Q&E	Temperature	
				21 °C	-10 °C	21 °C	-10 °C		21 °C	-10 °C
12x2.0 mm	12	Q&E 12x1.1	M12/M18	≈ 4+2	≈ 5+1	≈ 4+1	~ 4+1	Q&E 12	≈ 6	≈ 6
15x2.5 mm	15	Q&E 15	M12/M18	≈ 3+2	≈ 3+2	≈ 4+2	~ 4+1	Q&E 15x2.5	≈ 3+1	≈ 3+1
18x2.5 mm	18	Q&E 17/18	M12/M18	≈ 5+1	≈ 5+1	≈ 5+3	~ 5+2	Q&E 18x2.5	≈ 5	≈ 5
22x3.0 mm	22	Q&E 22	M12/M18	≈ 8	≈ 8	≈ 7+2	~ 7	Q&E 22x3.0	≈ 7	≈ 7
28x4.0 mm	28	Q&E 28	M12/M18	≈ 19-20	≈ 19-20	≈ 11+3	~ 11+1	Q&E 28x4.0	≈ 16-17	≈ 16-17
22x3.0 mm	22	Q&E 22	Uponor					H22 Q&E	≈ 8	
28x4.0 mm	28	Q&E 28	Uponor					H28 Q&E	≈ 13	

no!

... DEC JAN FEB ...

< 5 °C

OPTION

≤ 15 sec

OK?

≤ 50 °C