



ESBE AB
Bruksgatan 22
SE-333 75 Reftele
www.esbe.eu



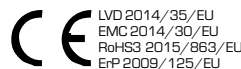
ESBE System Units
CIRCULATION UNIT DN25, DN32

SERIES Gxx200



Series GDA200
Series GFA200
Series GRA200

Series GRC200
Series GBA200



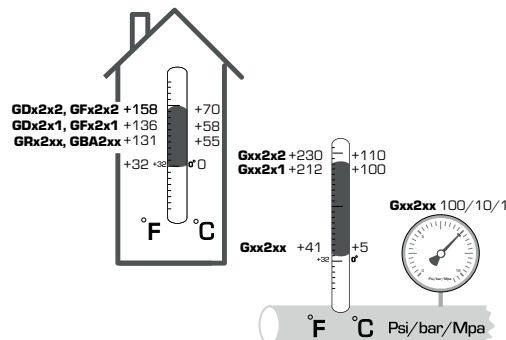
LVD 2014/35/EU
EMC 2014/30/EU
RoHS3 2015/863/EU
ErP 2009/125/EU



SI 2016 No. 1101
SI 2016 No. 1091
SI 2012 No. 3032
SI 2010 No. 2617

PED 2014/68/EU, article 4.3

SI 2016 No. 1105

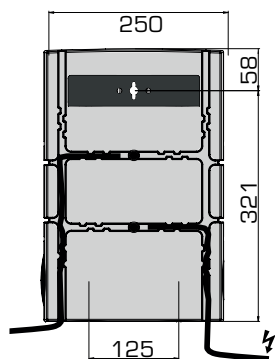


SERIES	FUNCTION
ESBE GDA211 GDA 212	
ESBE GFA211 GFA212	
GRA211 GRA212 GRA231 GRA232	
GRC221 GRC222 GRC241 GRC242	
ESBE GBA211	

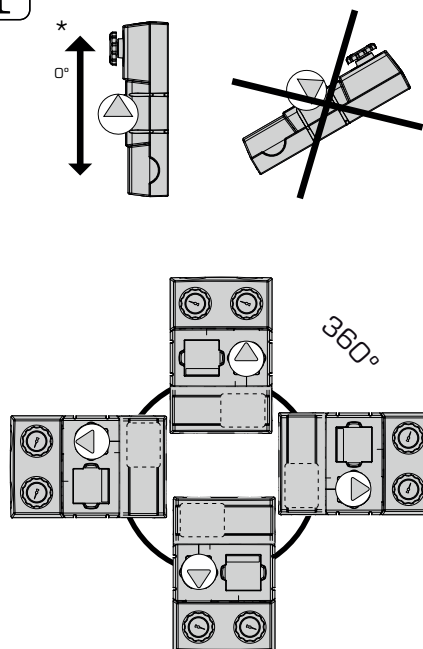
Mtrl.nr: 98141083 • Ritn.nr: 7879 vers. C • Rev. 2023-06-12



Cabling • Dimensions

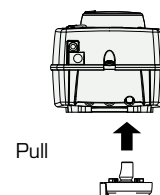
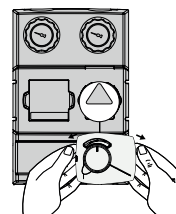


Mounting position

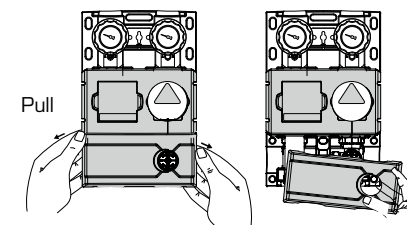
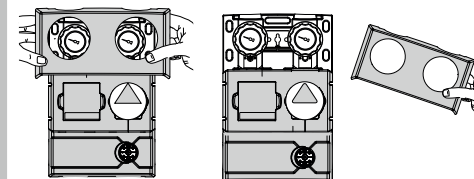


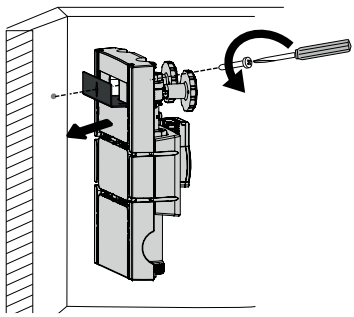
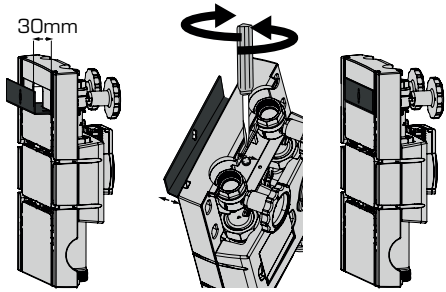
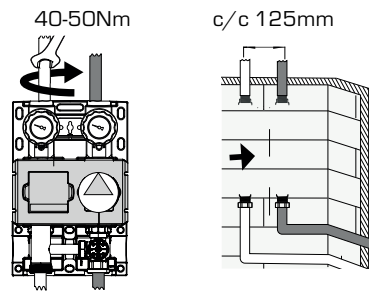
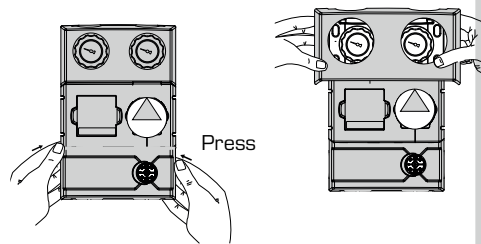
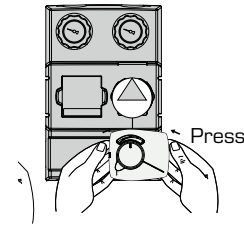
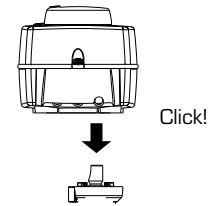
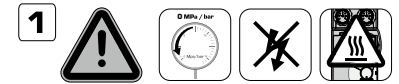
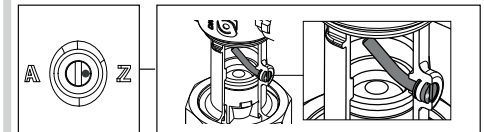
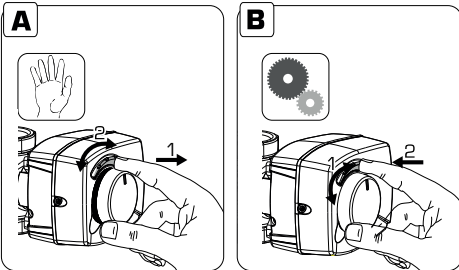
Remove actuator/controller

Series GRA2xx, GBA211, GRC2xx



Remove insulation

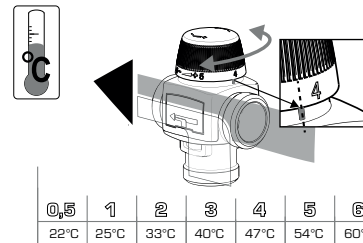


3**Assembling on wall****Adjust wallbracket****4****Fit supply pipes****Mount the insulation****5****Assemble actuator/controller**
Series GRA2xx, GBA211, GRC2xx**QUICK FIT!****i****Commissioning****1** **Filling and venting****i****Commissioning actuator/controller**

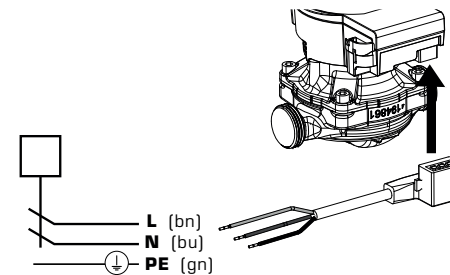
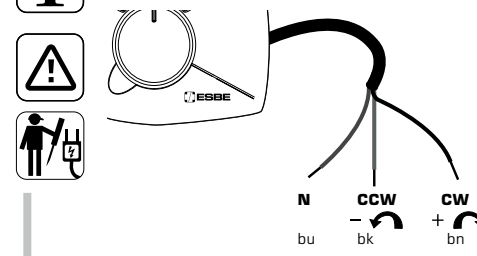
<https://esbe.eu/group/products/rotary-actuators>

i**Commissioning fixed temperature**

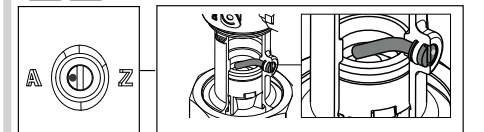
Series GFA211, GFA212



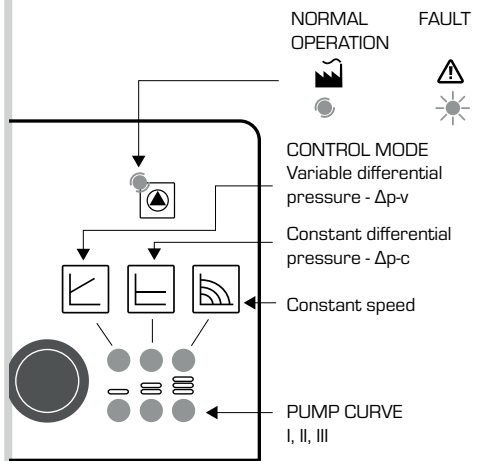
<https://esbe.eu/group/products/thermostatic-mixing-valves>

i**Electric installation**

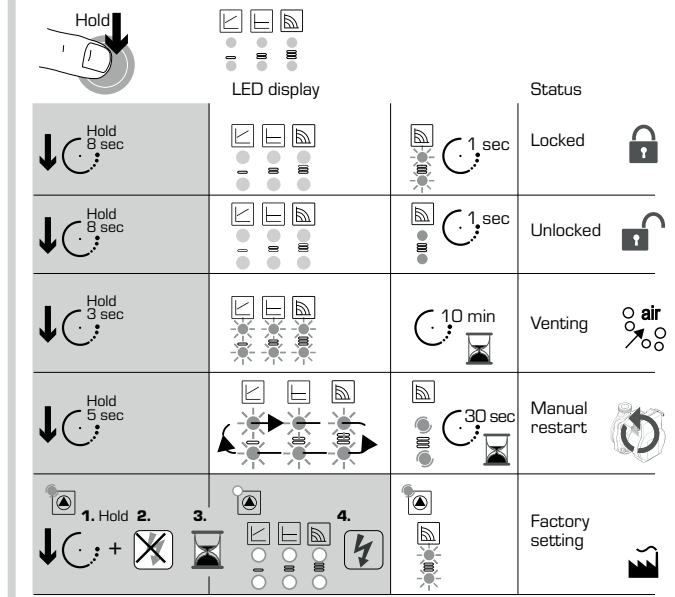
i www.esbe.eu

2 

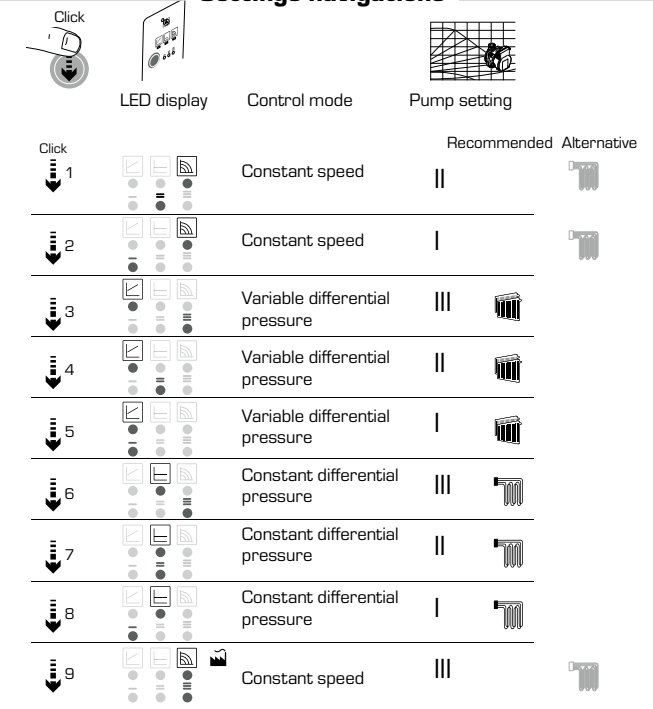
Wilo Display



Pump Settings

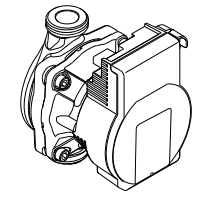


Settings navigations



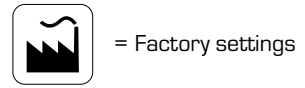
WILO - Faults, Causes and Remedies

LED	Faults	Cause	Remedy
Lights up red	Blocking	Rotor blocked	Activate manual restart or contact customer service
	Contacting/ winding	Winding defective	
Flashes red	Under/overvoltage	Power supply too low/high on mains side	Check mains voltage and operating conditions, and request customer service
	Excessive module temperature	Module interior too warm	
	Short-circuit	Motor current too high	
Flashes red/green	Generator operation	Water is flowing through the pump hydraulics, but there is no mains voltage at the pump	Check the mains voltage, water quantity/pressure and the ambient conditions
	Dry run	Air in the pump	
	Overload	Sluggish motor; pump is operated outside of its specifications (e.g. high module temperature). The speed is lower than during normal operation	

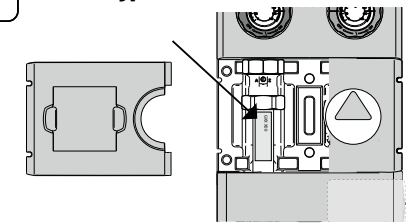


<http://www.esbe.eu/global/en/products/circulation units>

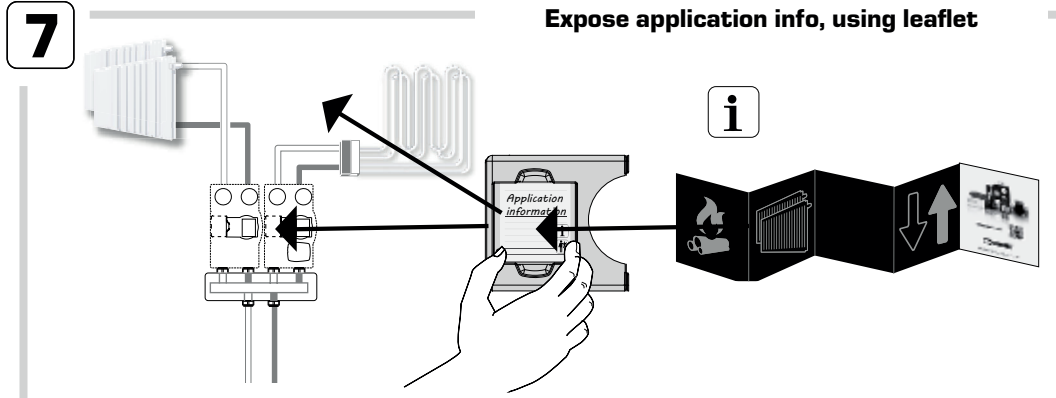
Factory setting

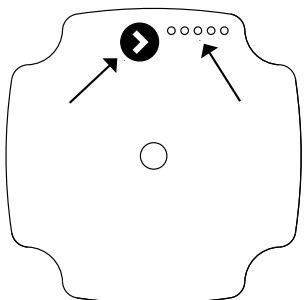


Type number



Expose application info, using leaflet





<http://www.esbe.eu/global/en/products/circulation units>

