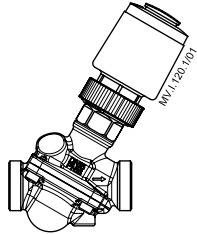
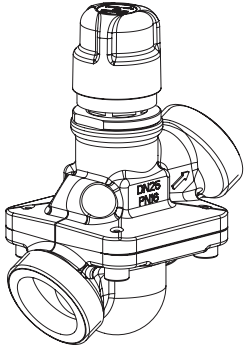
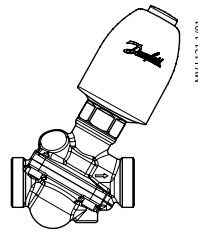


Installation Guide

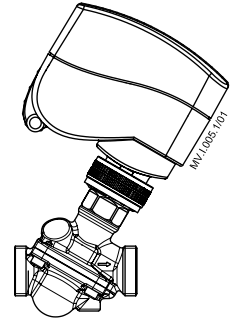
AB-QM DN 10-32



TWA-Z +
AB-QM DN 10-32

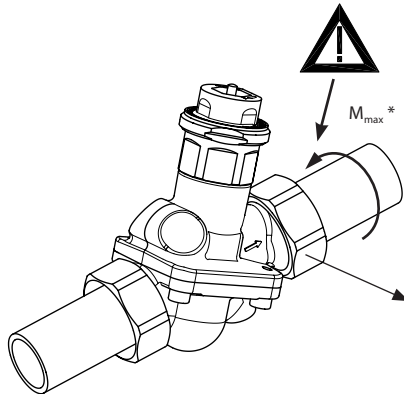
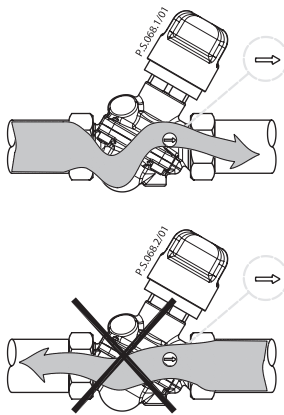


ABNM +
AB-QM DN 10-32



AMV/AME 110 NL, 120 NL +
AB-QM DN 10-32

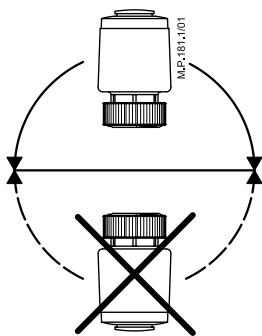
Installation / Monterng / Einbau / Installation / Installatie / Installation / Asennus / Montaż / Uzdādīšana / Beépítés / MONTAJ /
Монтаж / Instalace / 安装 / Vgradnja / Instalación / Montavimas



DN	To pipe		Weld.c.		Solder.c.	
	L (mm)	Code No.	L (mm)	Code No.	L (mm)	Code No.
10	R 3/8	26	003Z0231		17	065Z7016
15	R 1/2	27.5	003Z0232	37	003Z0226	065Z7017
20	R 3/4	30.5	003Z0233	42	003Z0227	
25	R 1	35	003Z0234	42	003Z0228	
32	R 1 1/4	38.5	003Z0235	42	003Z0229	

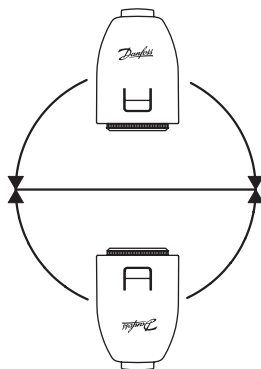
* M_{max} for DN 10 is 35 Nm

TWA-Z



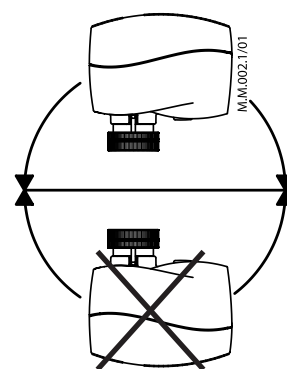
IP 41

ABNM



IP 54

AMV/AME 110NL, 120 NL

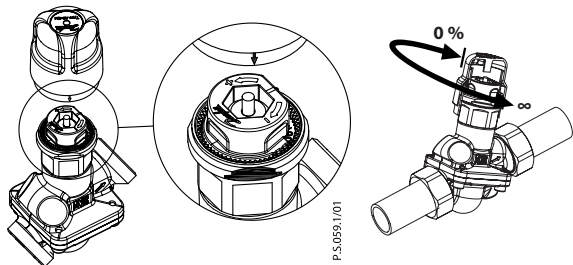


IP 42

Shut off / Afspærring / Absperrung / Fermeture / Afsluiten / Avstängning / Sulkuventtiili / Funkcja odcięcia / Aizvēršana / Elzárás / КАРМА / Отключение / Uzavření / 关闭 / Zapiranje pretoka / Corte / Uždarymas

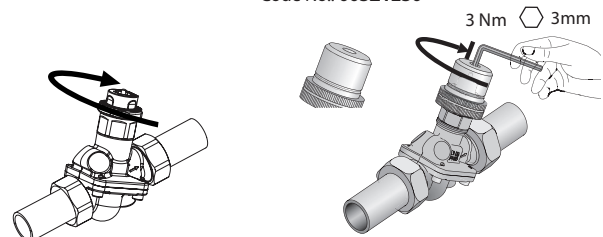
$\Delta p_{max} = 1 \text{ bar}$

Code No.: 003Z0240

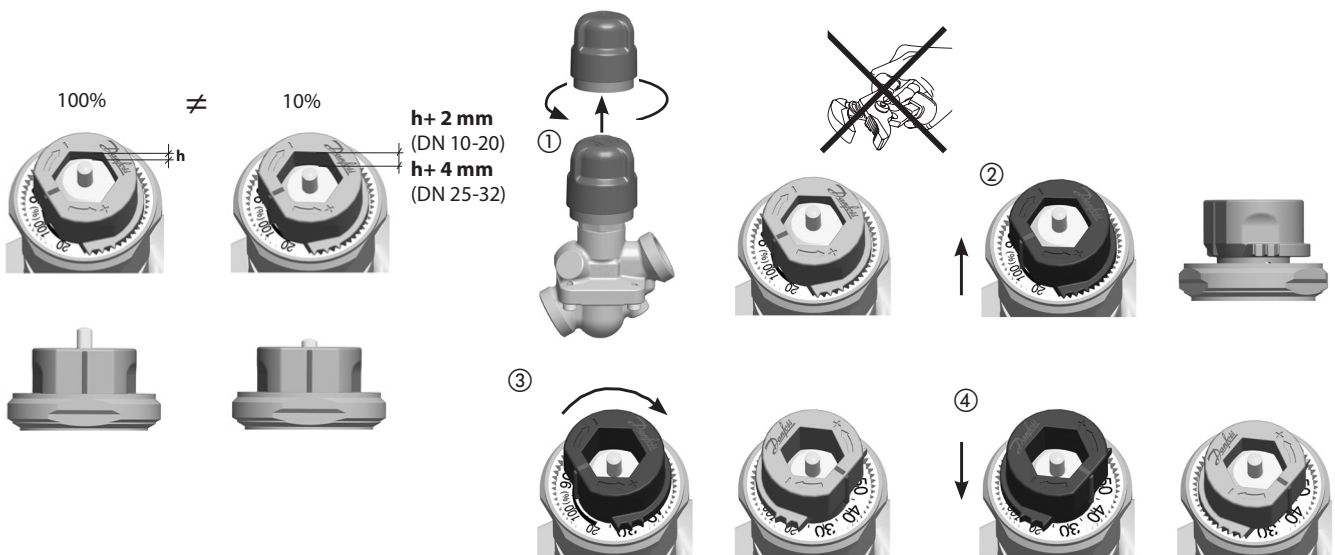


$\Delta p_{max} = 16 \text{ bar}$

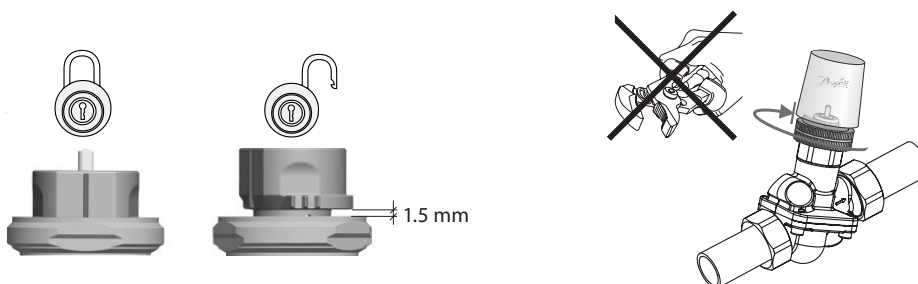
Code No.: 003Z1230



Setting / Indstilling / Einstellung / Réglage / Instelling / Inställning / Asettelu / Wykonywanie nastawy / Iestādījumi / Beállítás / АЯРЛАМА / Настройка / Nastavení / 设定 / Nastavitev / Ajuste / Nustatymas

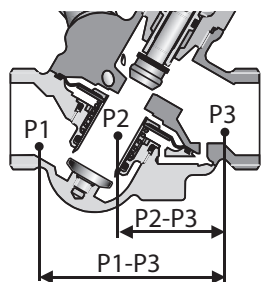
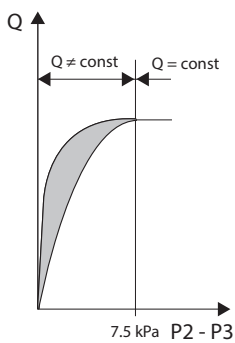
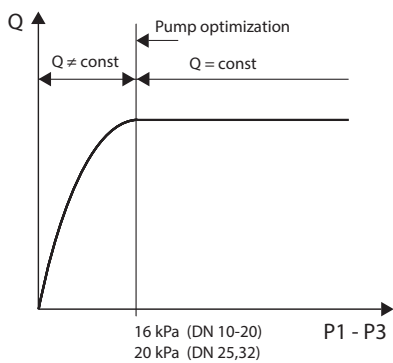
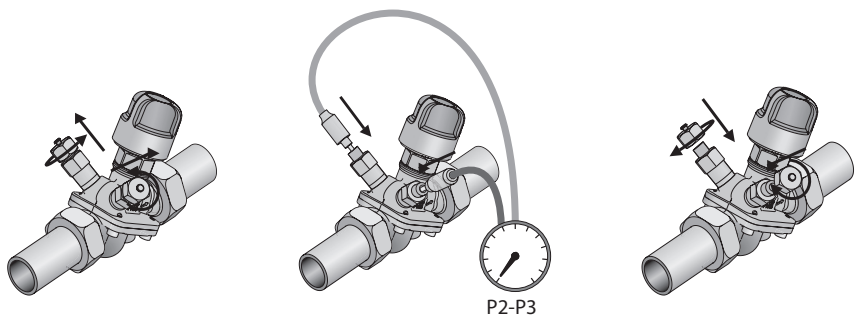


Locking / Låsning / Blockierung / Verrouillage / Vergrendelen / Låsning / Lukitseminen / Blokowanie nastawy / Noslēgšana / Korlátozás / KILITLEME / Блокировка / Uzamykání / 锁定 / Blokiranje / Bloqueo / Blokavimas

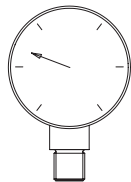


Installation Guide AB-QM DN 10-32

Measuring / Måling / Messung / Mesure / Meten / Mätning / Mittaaminen / Wykonywanie pomiarów / Mērišana / Mérés / ÖLÇÜM / Измерение / Měření / 測量 / Merjenje / Medida / Matavimas



-10...120 °C



PN 16



$\Delta p_{max.} = 400 \text{ kPa (4 bar)}$

DN 10 LF	L/h	L/s	GPM
20%	30	0,008	0,13
25%	38	0,010	0,16
30%	45	0,013	0,20
35%	53	0,015	0,23
40%	60	0,017	0,26
45%	68	0,019	0,29
50%	75	0,021	0,33
55%	83	0,023	0,36
60%	90	0,025	0,39
65%	98	0,027	0,43
70%	105	0,029	0,46
75%	113	0,031	0,49
80%	120	0,033	0,52
85%	128	0,035	0,56
90%	135	0,038	0,59
95%	143	0,040	0,62
100%	150	0,042	0,65

DN 10 & DN 15 LF	L/h	L/s	GPM
20%	55	0,015	0,24
25%	69	0,019	0,30
30%	83	0,023	0,36
35%	96	0,027	0,42
40%	110	0,031	0,48
45%	124	0,034	0,54
50%	138	0,038	0,60
55%	151	0,042	0,66
60%	165	0,046	0,72
65%	179	0,050	0,78
70%	193	0,053	0,84
75%	206	0,057	0,90
80%	220	0,061	0,96
85%	234	0,065	1,02
90%	248	0,069	1,08
95%	261	0,073	1,14
100%	275	0,076	1,20

DN 15	L/h	L/s	GPM
20%	90	0,025	0,40
25%	113	0,031	0,50
30%	135	0,038	0,60
35%	158	0,044	0,70
40%	180	0,050	0,80
45%	203	0,056	0,90
50%	225	0,063	1,00
55%	248	0,069	1,10
60%	270	0,075	1,20
65%	293	0,081	1,30
70%	315	0,088	1,40
75%	338	0,094	1,50
80%	360	0,100	1,60
85%	383	0,106	1,70
90%	405	0,113	1,80
95%	428	0,119	1,90
100%	450	0,125	2,00

DN 20	L/h	L/s	GPM
20%	180	0,050	0,80
25%	225	0,063	1,00
30%	270	0,075	1,20
35%	315	0,088	1,40
40%	360	0,100	1,60
45%	405	0,113	1,80
50%	450	0,125	2,00
55%	495	0,138	2,20
60%	540	0,150	2,40
65%	585	0,163	2,60
70%	630	0,175	2,80
75%	675	0,188	3,00
80%	720	0,200	3,20
85%	765	0,213	3,40
90%	810	0,225	3,60
95%	855	0,238	3,80
100%	900	0,250	4,00

DN 25	L/h	L/s	GPM
20%	340	0,094	1,50
25%	425	0,118	1,88
30%	510	0,142	2,25
35%	595	0,165	2,63
40%	680	0,189	3,00
45%	765	0,213	3,38
50%	850	0,236	3,75
55%	935	0,260	4,13
60%	1020	0,283	4,50
65%	1105	0,307	4,88
70%	1190	0,331	5,25
75%	1275	0,354	5,63
80%	1360	0,378	6,00
85%	1445	0,401	6,38
90%	1530	0,425	6,75
95%	1615	0,449	7,13
100%	1700	0,472	7,50

DN 32	L/h	L/s	GPM
20%	640	0,178	2,80
25%	800	0,222	3,50
30%	960	0,267	4,20
35%	1120	0,311	4,90
40%	1280	0,356	5,60
45%	1440	0,400	6,30
50%	1600	0,444	7,00
55%	1760	0,489	7,70
60%	1920	0,533	8,40
65%	2080	0,578	9,10
70%	2240	0,622	9,80
75%	2400	0,667	10,50
80%	2560	0,711	11,20
85%	2720	0,756	11,90
90%	2880	0,800	12,60
95%	3040	0,844	13,30
100%	3200	0,889	14,00

Danfoss can accept no responsibility for possible errors in catalogues, brochures and other printed material. Danfoss reserves the right to alter its products without notice. This also applies to products already on order provided that such alterations can be made without subsequential changes being necessary in specifications already agreed. All trademarks in this material are property of the respective companies. Danfoss and the Danfoss logotype are trademarks of Danfoss A/S. All rights reserved.