

Aalberts Integrated Piping Systems

Tel: 010-200 77 00
sverige@aalberts-ips.com
<http://aalberts-ips.com>

SORTIMENT



SORTIMENT

VSH XPress

VSH XPress





6.1 VSH XPRESS-SYSTEM I SYRAFAST STÅL

VSH Xpress

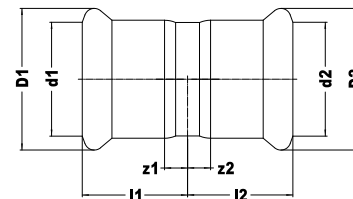


R2750 Rör i syrafast stål 1.4401 (AISI 316)
(längd 6 m)



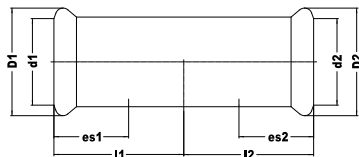
Dimension	DN	Artikelnr.	RSK-nr.
12 × 1,0	10	6118046	1451099
15 × 1,0	12	6117914	1451007
18 × 1,0	15	6117925	1451013
22 × 1,2	20	6117936	1451008
28 × 1,2	25	6117947	1451009
35 × 1,5	32	6117958	1451010
42 × 1,5	40	6117969	1451011
54 × 1,5	50	6117971	1451012
76,1 × 2,0	65	6117980	1451014
88,9 × 2,0	80	6117991	1451015
108 × 2,0	100	6118002	1451016

R2701 Muff
(2 × muff)



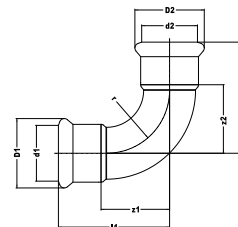
Dimension	l1/l2	z1/z2	Artikelnr.	RSK-nr.
12	21	5	6198874	1454379
15	25	5	6190943	1454000
18	25	5	6190954	1454001
22	26	5	6190965	1454002
28	28	5	6190976	1454003
35	31	5	6190987	1454004
42	36	6	6190998	1454005
54	41	6	6191009	1454006
76,1	71	16	6204154	1454203
88,9	82	19	6204165	1454204
108	96	19	6204176	1454205

R2703 Skjutmuff
(2 × muff)



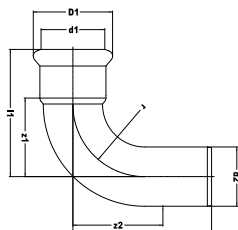
Dimension	l1/l2	es1/es2	Artikelnr.	RSK-nr.
15	40	25	6191284	1454007
18	40	25	6191295	1454008
22	42	25	6191306	1454009
28	46	30	6191317	1454010
35	51	30	6191328	1454011
42	60	40	6191339	1454012
54	70	40	6191341	1454013
76,1	115	60	6204286	1454206
88,9	129	70	6204297	1454207
108	153	80	6204308	1454208

R2708 90° böj
(2 × muff)



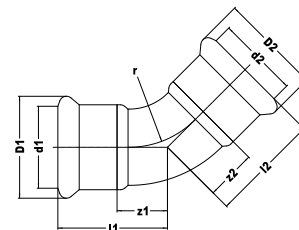
Dimension	l1/l2	z1/z2	r	Artikelnr.	RSK-nr.
12	37	20	14	6198885	1454380
15	41	21	18	6190206	1454014
18	45	25	22	6190217	1454015
22	51	30	27	6190228	1454016
28	60	37	34	6190239	1454017
35	71	45	42	6190241	1454018
42	86	56	51	6190250	1454019
54	105	70	65	6190261	1454020
76,1	150	95	91	6230004	1454324
88,9	174	111	107	6230015	1454325
108	215	138	130	6230026	1454326

R2711 90° böj
(muff x slätända)



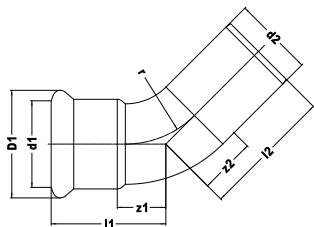
Dimension	l1	l2	z1	z2	r	Artikelnr.	RSK-nr.
12	37	48	20	31	14	6198896	1454599
15	41	49	21	29	18	6190349	1454028
18	45	51	25	31	22	6190351	1454029
22	51	60	30	39	27	6190360	1454030
28	60	66	37	43	34	6190371	1454031
35	71	76	45	50	42	6190382	1454032
42	86	93	56	63	51	6190393	1454033
54	105	111	70	76	65	6190404	1454034
76,1	150	165	95	110	91	6230037	1454327
88,9	175	190	112	127	107	6230048	1454328
108	216	238	139	161	130	6230059	1454329

R2713 45° böj
(2 x muff)



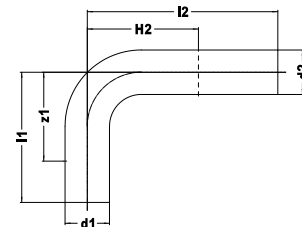
Dimension	l1/l2	z1/z2	r	Artikelnr.	RSK-nr.
15	31	11	18	6190041	1454021
18	32	12	22	6190052	1454022
22	35	14	27	6190063	1454023
28	40	17	34	6190074	1454024
35	47	21	42	6190085	1454025
42	56	26	51	6190096	1454026
54	67	32	65	6190107	1454027
76,1	98	49	91	6230061	1454330
88,9	112	61	107	6230070	1454331
108	138	61	130	6230081	1454332

R2712 45° böj
(muff x slätända)



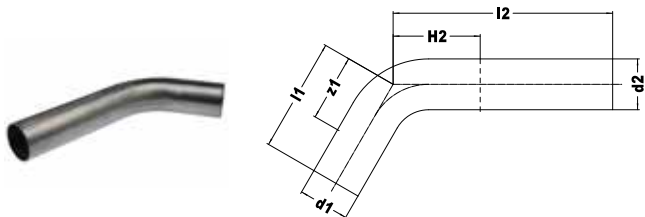
Dimension	l1	l2	z1	z2	r	Artikelnr.	RSK-nr.
15	30	38	10	18	18	6190118	1454035
18	32	39	12	19	22	6190129	1454036
22	35	42	14	21	27	6190131	1454037
28	40	46	17	23	34	6190140	1454038
35	46	51	20	25	42	6190151	1454039
42	56	63	26	33	51	6190162	1454040
54	65	73	30	38	65	6190173	1454041
76,1	98	117	43	62	91	6230092	1454333
88,9	112	131	49	68	107	6230103	1454334
108	138	154	61	77	130	6230114	1454335

R2725 Passböj 90°
(2 x slätända)



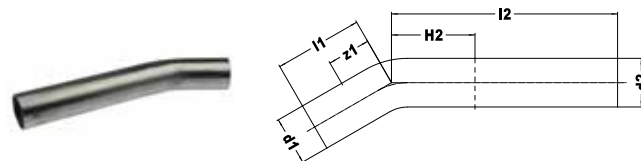
Dimension	l1	l2	z1	H2	Artikelnr.	RSK-nr.
Ø15	70	120	50	58	6190272	1454084
Ø18	70	120	50	63	6190283	1454085
Ø22	72	120	51	70	6190294	1454086
Ø28	82	120	59	80	6190305	1454087
Ø35	120	200	94	100	6190316	1454088
Ø42	150	250	120	120	6190327	1454089
Ø54	200	300	165	145	6190338	1454090

R2724 Passböj 60°
(2 × slätända)



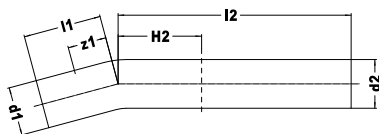
Dimension	l1	l2	z1	H2	Artikelnr.	RSK-nr.
Ø28	63	121	40	66	6190184	1454099
Ø35	97	203	71	77	6190195	1454100
Ø42	102	256	72	90	6191878	1454101
Ø54	162	306	127	107	6191889	1454102

R2723 Passböj 30°
(2 × slätända)



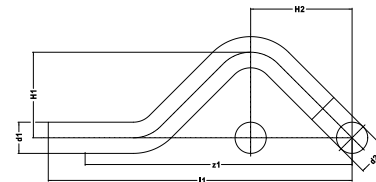
Dimension	l1	l2	z1	H2	Artikelnr.	RSK-nr.
Ø28	51	130	28	54	6190021	1454095
Ø35	73	214	47	60	6190030	1454096
Ø42	99	272	69	69	6191856	1454097
Ø54	134	326	99	79	6191867	1454098

R2722 Passböj 15°
(2 × slätända)

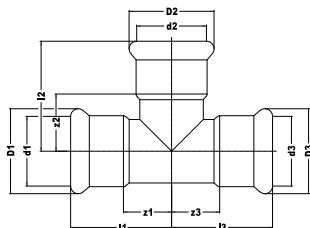


Dimension	l1	l2	z1	H2	Artikelnr.	RSK-nr.
Ø28	45	134	22	48	6190008	1454091
Ø35	73	222	47	53	6190019	1454092
Ø42	89	280	59	59	6191834	1454093
Ø54	122	337	87	67	6191845	1454094

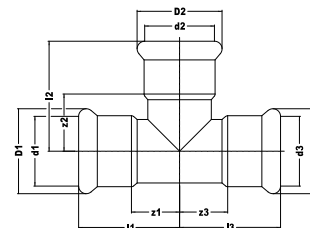
R2717 S-Rör
(2 × slätända)



Dimension	l1	z1	H1	H2	Artikelnr.	RSK-nr.
Ø15	158	138	37	57	6191086	1454059
Ø18	165	145	40	60	6191097	1454060
Ø22	178	157	44	65	6191108	1454061
Ø28	210	187	50	74	6191119	1454062

R2714 T-rör
(3 × muff)

Dimension	I1/I3	I2	z1/z3	z2	Artikelnr.	RSK-nr.
12	28	32	17	17	6198907	1455898
15	35	39	15	19	6191350	1454162
18	37	41	17	21	6191372	1454163
22	40	44	19	23	6191405	1454164
28	45	49	22	26	6191449	1454165
35	51	55	25	29	6191493	1454166
42	60	62	30	32	6191537	1454167
54	71	72	36	37	6191581	1454168
76,1	116	115	61	60	6204319	1454221
88,9	156	156	68	68	6204321	1454222
108	231	231	79	78	6204330	1454223

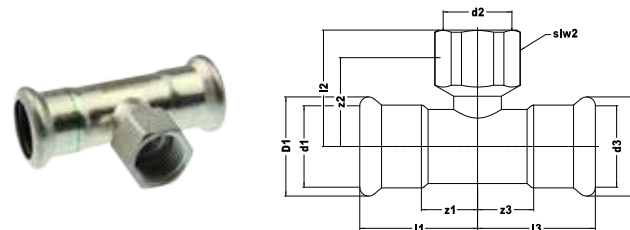
R2715 T-rör reducerat
(3 × muff)

Dim. (d1 × d2 × d3)	I1/I3	I2	z1/z3	z2	Artikelnr.	RSK-nr.
18 × 15 × 18	37	41	17	21	6191361	1454169
22 × 15 × 22	40	43	19	23	6191383	1454170
22 × 18 × 22	40	43	17	23	6191394	1454171
28 × 15 × 28	45	46	22	26	6191416	1454172
28 × 18 × 28	45	46	22	26	6191427	1454173
28 × 22 × 28	45	47	22	26	6191438	1454174
35 × 15 × 35	51	49	25	29	6191451	1454175
35 × 18 × 35	51	49	25	29	6191460	1454176
35 × 22 × 35	51	50	25	29	6191471	1454177
35 × 28 × 35	51	52	25	29	6191482	1454178
42 × 22 × 42	60	53	30	32	6191504	1454179
42 × 28 × 42	60	55	30	32	6191515	1454180
42 × 35 × 42	60	58	30	32	6191526	1454181
54 × 22 × 54	71	59	36	38	6191548	1454182
54 × 28 × 54	71	61	36	38	6191559	1454183
54 × 35 × 54	71	64	36	38	6191561	1454184
54 × 42 × 54	71	58	36	28	6191570	1454185

R2715 T-rör reducerat - forts. (3 × muff)

Dim. (d1 × d2 × d3)	l1/3	l2	z1/z3	z2	Artikelnr.	RSK-nr.
76,1 × 22 × 76,1	116	68	61	45	6204341	1454224
76,1 × 28 × 76,1	116	71	61	74	6204352	1454225
76,1 × 35 × 76,1	116	75	61	48	6204363	1454226
76,1 × 42 × 76,1	116	79	61	47	6204374	1454227
76,1 × 54 × 76,1	116	80	61	43	6204385	1454228
88,9 × 22 × 88,9	131	76	68	53	6204396	1454229
88,9 × 28 × 88,9	131	76	68	52	6204407	1454230
88,9 × 35 × 88,9	131	83	68	56	6204418	1454231
88,9 × 42 × 88,9	131	85	68	53	6204429	1454232
88,9 × 54 × 88,9	131	93	68	56	6204431	1454233
88,9 × 76,1 × 88,9	131	116	68	61	6204440	1454234
108 × 22 × 108	156	85	79	62	6204451	1454235
108 × 28 × 108	156	88	79	64	6204462	1454236
108 × 35 × 108	156	94	79	67	6204473	1454237
108 × 42 × 108	156	96	79	64	6204484	1454238
108 × 54 × 108	156	102	79	65	6204495	1454239
108 × 76,1 × 108	156	125	79	70	6204506	1454240
108 × 88,9 × 108	156	135	79	72	6204517	1454241

R2718 T-rör med inv. gga (muff × inv. gga × muff)

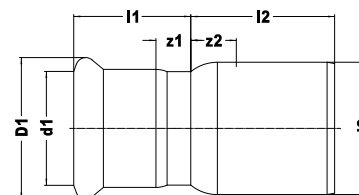


Dimension	l1/3	l2	z1/z3	z2	slw2	Artikelnr.	RSK-nr.
15 × Rp1/2 × 15	35	34	15	24	24	6191592	1454132
18 × Rp1/2 × 18	37	35	17	25	24	6191603	1454133
18 × Rp3/4 × 18	37	37	17	26	30	6191614	1454134
22 × Rp1/2 × 22	40	37	19	27	24	6191625	1454135
22 × Rp3/4 × 22	40	39	19	28	30	6191636	1454136
28 × Rp1/2 × 28	45	40	22	30	24	6191647	1454137
28 × Rp3/4 × 28	45	42	22	31	30	6191658	1454138
28 × Rp1 × 28	51	44	25	34	24	6198599	1455470
35 × Rp1/2 × 35	51	46	25	35	30	6191669	1454139
35 × Rp3/4 × 35	60	46	30	36	24	6191671	1454140
35 × Rp1 × 35	60	48	30	37	30	6198601	1455471
42 × Rp1/2 × 42	71	52	36	42	24	6191680	1454141
42 × Rp3/4 × 42	71	65	36	47	67	6191691	1454142
42 × Rp1 × 42	71	54	36	43	30	6198610	1455472
54 × Rp1/2 × 54	45	46	22	33	38	6191702	1454143
54 × Rp3/4 × 54	51	50	25	37	38	6191724	1454144
54 × Rp1 × 54	60	52	30	39	38	6198621	1455473
54 × Rp2 × 54	71	58	36	45	38	6191713	1454145

R2718 T-rör med inv. gga - forts.
(muff x inv. gga x muff)

Dimension	l1/β3	l2	z1/z3	z2	slw2	Artikelnr.	RSK-nr.
76,1 × Rp3/4 × 76,1	116	68	61	55	30	6204528	1454242
76,1 × Rp2 × 76,1	131	87	68	74	30	6204550	1454245
88,9 × Rp3/4 × 88,9	156	86	79	73	30	6204539	1454243
88,9 × Rp2 × 88,9	116	81	61	59	65	6204561	1454246
108 × Rp3/4 × 108	131	88	68	66	65	6204541	1454244
108 × Rp2 × 108	156	98	79	76	65	6204572	1454247

R2707 Reducering
(slätända x muff)

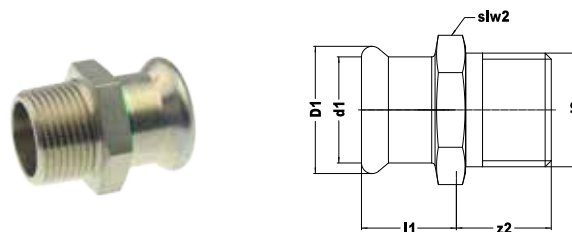


Dim. (d1 × d2)	l1	l2	z1	z2	Artikelnr.	RSK-nr.
Ø15 × 12	25	25	8	5	6198951	1455740
Ø18 × 15	27	33	7	13	6191121	1454042
Ø22 × 15	28	33	8	12	6191130	1454043
Ø22 × 18	28	30	8	9	6191141	1454044
Ø28 × 15	28	40	8	17	6191152	1454045
Ø28 × 18	28	38	8	15	6191163	1454046
Ø28 × 22	29	34	8	11	6191174	1454047
Ø35 × 15	32	47	12	21	6192221	1454048
Ø35 × 18	32	46	12	20	6191185	1454049
Ø35 × 22	29	42	8	16	6191196	1454050
Ø35 × 28	31	38	8	12	6191207	1454051
Ø42 × 15	32	57	12	27	6192230	1454281
Ø42 × 18	32	55	15	25	6192241	1454282
Ø42 × 22	33	53	12	23	6191218	1454052
Ø42 × 28	31	51	8	21	6191229	1454053
Ø42 × 35	34	42	8	12	6191231	1454054

R2707 Reducering - forts. (slätända x muff)

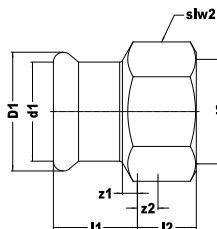
Dimension	l1	l2	z1	z2	Artikelnr.	RSK-nr.
Ø54 × 15	32	68	12	33	6192252	1454283
Ø54 × 18	32	66	12	43	6192263	1454284
Ø54 × 22	33	66	12	31	6191240	1454055
Ø54 × 28	34	62	11	27	6191251	1454056
Ø54 × 35	34	60	8	24	6191262	1454057
Ø54 × 42	40	55	10	20	6191273	1454058
Ø76,1 × 42	79	72	49	17	6204211	1454248
Ø76,1 × 54	42	98	7	43	6204220	1454249
Ø88,9 × 54	42	114	7	51	6204231	1454250
Ø88,9 × 76,1	68	88	13	25	6204242	1454251
Ø108 × 54	66	138	31	61	6204253	1454252
Ø108 × 76,1	69	127	14	50	6204264	1454253
Ø108 × 88,9	77	113	14	36	6204275	1454254

R2705 Övergångsnippel (muff x utv. gga)



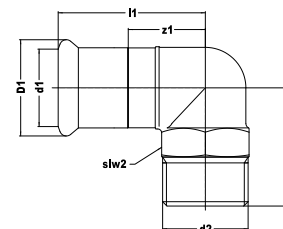
Dimension	l1	z2	slw2	Artikelnr.	RSK-nr.
12 × R3/8	17	15	22	6198918	1455899
15 × R1/2	20	18	24	6190580	1454186
15 × R3/4	20	21	27	6190591	1454187
18 × R1/2	20	18	27	6190602	1454188
18 × R3/4	20	21	27	6190613	1454189
22 × R1/2	21	28	34	6190635	1454191
22 × R3/4	21	21	32	6190646	1454190
22 × R1	21	22	32	6190624	1454192
28 × R3/4	23	25	38	6190679	1454193
28 × R1	23	29	43	6190657	1454194
28 × R1 1/4	23	22	38	6190668	1454195
35 × R1	26	27	54	6190681	1454196
35 × R1 1/4	26	30	49	6190701	1454197
35 × R1 1/2	26	29	54	6190690	1454198
42 × R1 1/4	30	29	54	6190723	1454199
42 × R1 1/2	30	29	54	6190712	1454200
54 × R1 1/2	35	30	67	6190734	1454201
54 × R2	35	34	67	6190745	1454202
76,1 × R2 1/2	55	42	92	6204759	1454312
88,9 × R3	63	46	109	6204761	1454313

R2702 Övergångsmuff
(muff x inv. gga)



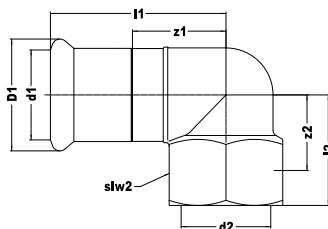
Dimension	l1	l2	z1	z2	slw2	Artikelnr.	RSK-nr.
12 x Rp3/8	19	13	3	4	24	6198931	1455914
15 x Rp1/2	22	15	2	5	24	6190415	1454115
15 x Rp3/4	23	17	3	6	30	6190426	1454116
18 x Rp1/2	22	15	2	5	27	6190437	1454117
18 x Rp3/4	22	17	2	6	30	6190448	1454118
22 x Rp1/2	24	20	3	7	38	6190461	1454119
22 x Rp3/4	21	15	0	5	32	6190470	1454120
22 x Rp1	23	17	2	6	32	6190459	1454121
28 x Rp1/2	26	12	3	1	38	6193308	1454156
28 x Rp3/4	23	17	0	6	38	6190503	1454122
28 x Rp1	25	20	2	7	38	6190481	1454123
28 x Rp1 1/4	25	22	2	7	46	6190492	1454124
35 x Rp1	27	20	1	7	46	6190514	1454125
35 x Rp1 1/4	28	22	2	8	54	6190536	1454126
35 x Rp1 1/2	28	22	2	7	46	6190525	1454127
42 x Rp1 1/4	32	22	2	8	54	6190558	1454128
42 x Rp1 1/2	30	22	0	0	54	6190547	1454129
54 x Rp1 1/2	36	22	1	8	67	6190569	1454130
54 x Rp2	37	26	2	8	67	6190571	1454131

R2728 Vinkel 90°
(muff x utv. gga)



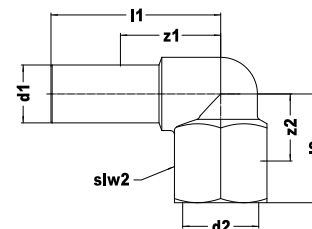
Dimension	l1	z1	z2	slw2	Artikelnr.	RSK-nr.
15 x R1/2	43	23	31	22	6190877	1454149
18 x R1/2	44	24	32	24	6190888	1454150
22 x R3/4	49	28	39	30	6190899	1454151
28 x R1	53	30	46	34	6190901	1454152
35 x R1 1/4	60	34	52	43	6190910	1454153
42 x R1 1/2	69	39	58	49	6190921	1454154
54 x R2	82	47	68	62	6190932	1454155

R2709 Vinkel 90°
(muff x inv. gga)



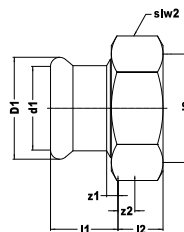
Dimension	l1	l2	z1	z2	slw2	Artikelnr.	RSK-nr.
15 × Rp1/2	44	28	24	13	24	6190822	1454157
18 × Rp1/2	44	28	24	13	24	6190833	1454158
22 × Rp1/2	49	33	28	17	30	6198456	1455441
22 × Rp3/4	55	37	32	24	38	6190844	1454159
28 × Rp1/2	62	42	36	27	46	6198467	1455442
28 × Rp3/4	45	31	24	16	24	6198478	1455443
28 × Rp1	48	35	25	20	24	6190855	1454160
35 × Rp1/2	51	35	28	19	30	6198489	1455444
35 × Rp3/4	56	35	30	20	24	6198491	1455445
35 × Rp1	58	37	32	21	30	6198500	1455446
35 × Rp1 1/4	58	41	32	28	38	6190866	1454161

R2710 Vinkel 90°
(slätända x inv. gga)



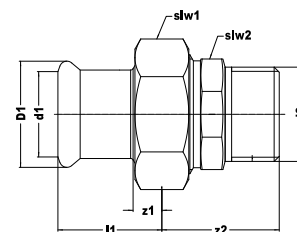
Dimension	l1	l2	z1	z2	slw2	Artikelnr.	RSK-nr.
15 × Rp1/2	44	28	24	13	24	6192274	1454288

R2704 Övergångskoppling med lekande mutter
(muff x inv. gga)



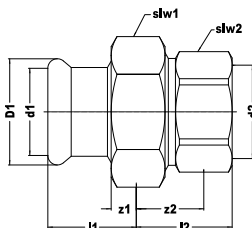
Dimension	l1	l2	z1	z2	slw2	Artikelnr.	RSK-nr.
15 x G3/4	29	8	9	2	30	6191735	1454070
18 x G3/4	29	8	9	2	30	6191746	1454071
22 x G1	30	10	9	2	37	6191757	1454072
28 x G1 1/4	31	10	8	2	46	6191768	1454073
35 x G1 1/2	34	11	8	2	52	6191779	1454074
42 x G1 3/4	41	11	11	2	58	6191781	1454075
54 x G2 3/8	47	11	12	3	75	6191790	1454076

R2735 Övergångskoppling med plantätning
(muff x utv. gga)



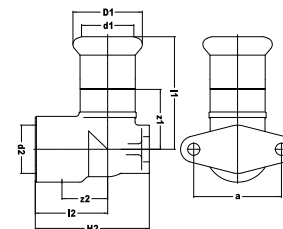
Dimension	l1	z1	z2	slw1	slw2	Artikelnr.	RSK-nr.
15 x R1/2	62	9	33	30	25	6192120	1454301
15 x R3/4	65	9	36	30	32	6192131	1454302
18 x R1/2	62	9	33	30	25	6192142	1454303
18 x R3/4	65	9	36	30	32	6192153	1454304
22 x R1/2	63	9	33	37	25	6192164	1454305
22 x R3/4	69	9	29	37	32	6192175	1454306
22 x R1	72	9	42	37	39	6192186	1454307
28 x R1	73	8	42	46	39	6192197	1454308
35 x R1 1/4	78	8	44	52	49	6192208	1454309
42 x R1 1/2	85	11	44	58	51	6192219	1454310
54 x R2	100	12	53	75	65	6192296	1454311

R2738 Övergångskoppling med plantätning
(muff x inv. gga)



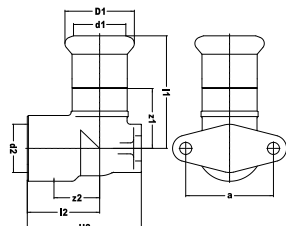
Dimension	l1	l2	z1	z2	slw1	slw2	Artikelnr.	RSK-nr.
15 x Rp1/2	57	28	9	18	30	24	6192021	1454291
15 x Rp3/4	60	31	9	20	30	30	6192032	1454292
18 x Rp1/2	57	28	9	18	30	24	6192043	1454293
18 x Rp3/4	60	31	9	20	30	30	6192054	1454294
22 x Rp3/4	63	33	9	22	37	30	6192065	1454295
22 x Rp1	66	36	9	23	37	38	6192076	1454296
28 x Rp1	65	34	8	21	46	38	6192087	1454297
35 x Rp1 1/4	73	39	8	24	52	46	6192098	1454298
42 x Rp1 1/2	82	41	11	27	58	54	6192109	1454299
54 x Rp2	91	44	12	26	75	67	6192111	1454300

R2716 Ventilstäve
(muff x inv. gga)



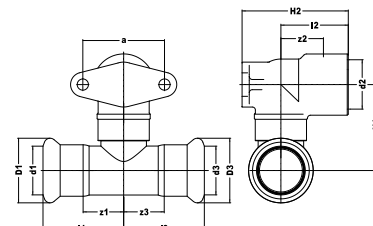
Dimension	l1	l2	z1	z2	H2	a	Artikelnr.	RSK-nr.
15 x Rp1/2	45	28	25	13	41	34	6191801	1454146
18 x Rp1/2	45	28	25	13	44	34	6191812	1454147
22 x Rp3/4	49	33	28	17	52	40	6191823	1454148

R2737 Ventilfäste, lång
(muff x inv. gga)



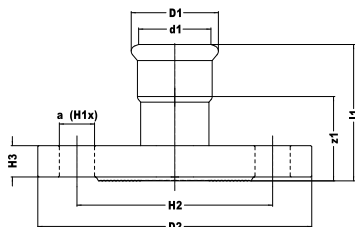
Dimension	l1	l2	z1	z2	H2	a	Artikelnr.	RSK-nr.
15 x Rp1/2	45	28	25	13	63	40	6191999	1454285
18 x Rp1/2	45	28	25	13	63	40	6192001	1454286
22 x Rp3/4	49	33	28	17	64	40	6192010	1454287

R2719 Ventilfäste
(muff x inv. gga x muff)



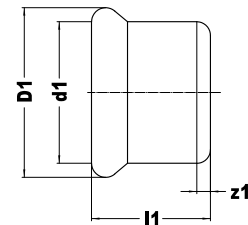
Dimension	l1/l3	l2	z1/z3	z2	H1	H2	a	Artikelnr.	RSK-nr.
15 x Rp1/2 x 15	35	28	15	13	31	41	34	6192285	1454289

R2726 Flänskoppling PN10/16
(1 × muff)



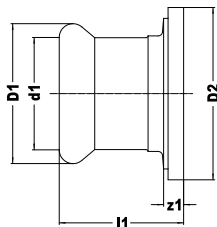
Dimension	l1	z1	H1	H2	H3	a	hål	Artikelnr.	RSK-nr.
15	56	36	4	65	11	14	4	6190756	1454063
18	57	37	4	65	11	14	4	6190767	1454064
22	59	38	4	75	12	14	4	6190778	1454065
28	65	42	4	85	14	14	4	6190789	1454066
35	69	43	4	100	15	18	4	6190791	1454067
42	77	47	4	110	16	18	4	6190800	1454068
54	87	52	4	125	16	18	4	6190811	1454069
76,1	126	71	4	145	18	18	4	6204121	1454258
88,9	147	84	8	160	20	18	8	6204132	1454259
108	167	90	8	180	20	18	8	6204143	1454260

R2729 Huv
(1 × muff)



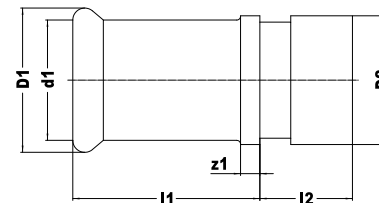
Dimension	l1	z1	Artikelnr.	RSK-nr.
15	23	3	6191011	1454077
18	23	3	6191020	1454078
22	24	3	6191031	1454079
28	26	3	6191042	1454080
35	29	3	6191053	1454081
42	37	7	6191064	1454082
54	42	7	6191075	1454083
76,1	95	40	6204187	1454255
88,9	107	44	6204198	1454256
108	127	50	6204209	1454257

R2736 Bordring
(muff x bordring)



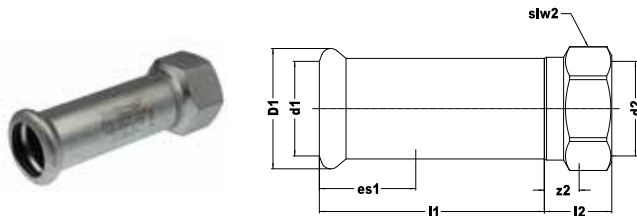
Dimension	l1	z1	D2	Artikelnr.	RSK-nr.
15 x 1 1/8	30	10	34	6191891	1454314
15 x 1 1/2	30	10	44	6191900	1454315
18 x 1 1/4	29	9	39	6191911	1454316
18 x 1 1/2	29	9	44	6191922	1454317
22 x 1 1/4	28	7	39	6191933	1454318
22 x 1 1/2	28	7	44	6191944	1454319
28 x 1 1/2	31	8	44	6191955	1454320
35 x 2	33	7	56	6191966	1454321
42 x 2 1/4	37	7	62	6191977	1454322
54 x 2 3/4	44	9	78	6191988	1454323

R2748 Övergångskoppling
(muff x rillad)



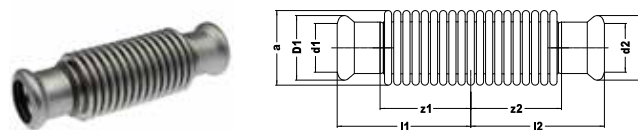
Dimension	l1	l2	z1	Artikelnr.	RSK-nr.
28 x Ø33,7	49	24	26	6198555	1455463
35 x Ø42,4	54	24	28	6198566	1455464
42 x Ø48,3	61	24	31	6198577	1455465
54 x Ø60,3	73	24	38	6198588	1455466
76,1 x Ø73,0	76	37	21	6198841	1455484
76,1 x Ø76,1	76	24	21	6193319	1455467
88,9 x Ø88,9	86	24	23	6193321	1455468
108 x Ø114	84	26	7	6193330	1455469

R2741 Skjutmuff
(muff × inv. gga)



Dimension	l1	l2	z2	slw2	Δl	Artikelnr.	RSK-nr.
22 × Rp1/2	70	19	15	28	40	6198511	1455459
22 × Rp3/4	70	24	17	32	40	6198522	1455460
28 × Rp1/2	70	21	15	34	40	6198533	1455461
28 × Rp3/4	70	21	17	34	40	6198544	1455462

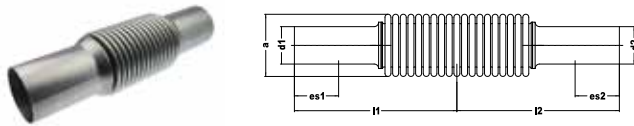
R2747 Axiell kompensator
(2 × muff)



Dimension	l1/l2	z1/z2	a	Δl	Artikelnr.	RSK-nr.
15	55	35	24	-14	6198302	1455474
18	53	33	27	-16	6198313	1455475
22	60	39	37	-20	6198324	1455476
28	65	42	44	-22	6198335	1455477
35	70	44	50	-24	6198346	1455478
42	77	47	60	-24	6198357	1455479
54	90	55	54	-30	6198368	1455480

Axiellkompensatorerna har inga godkännanden för tappvatten.

R2756 Axiell kompensator
(2 x slätända)



Dimension	l1/l2	z1/z2	a	Δl	Artikelnr.	RSK-nr.
76,1	138	61	92,0	-30,0	6198379	1455481
88,9	145	90	106,0	-30,0	6198381	1455482
108	173	110	130,0	-30,0	6198390	1455483

Axialkompensatorerna är inte godkända för tappvatten.

C1451 O-ring med LBP-funktion (Leak Before Pressed)
(svart, EPDM) för syrafast och elförzinkat stål



Dimension	Artikelnr.	RSK-nr.
15	6222216	1552138
18	6222227	1552139
22	6222238	1552140
28	6222249	1552141
35	6222251	1552142
42	6222260	1552143
54	6222271	1552144

R2760 O-ring, standard
(svart, EPDM) för syrafast och elförzinkat stål (ej LBP)



Dimension	Artikelnr.	RSK-nr.
76,1	6208015	1454278
88,9	6208026	1454279
108	6208037	1454280

C1452 Plan tätning
(svart, EPDM) för syrafast och elförzinkat stål



Dimension	Artikelnr.	RSK-nr.
15-18	6228013	1455941
22	6228024	1455942
28	6228035	1455943
35	6228046	1455944
42	6228057	1455958
54	6228068	1455959

C2767 Plan tätning
(svart, EPDM) för syrafast och elförzinkat stål



Dimension	Artikelnr.	RSK-nr.
15-18	6118301	1456781
22	6118310	1456782
28	6118321	1456783
35	6118332	1456784
42	6118343	1456785
54	6118354	1456786

R2764 O-ring (LBP) för särskilda tillämpningar
(grön, FPM) för syrafast och elförzinkat stål



Dimension	Artikelnr.	RSK-nr.
15	6119401	1454336
18	6119410	1454337
22	6119421	1454338
28	6119432	1454339
35	6119443	1454340
42	6119454	1454341
54	6119465	1454342

R2761 O-ring för särskilda tillämpningar
(grön, FPM) för syrafast och elförzinkat stål (ej LBP)



Dimension	Artikelnr.	RSK-nr.
76,1	6119377	1454275
88,9	6119388	1454276
108	6119399	1454277

R2763 O-ring (LBP) för ånga
(grå, FPM) för syrafast stål



Dimension	Artikelnr.	RSK-nr.
15	6119784	1455498
18	6119795	1455499
22	6119806	1455660
28	6119817	1455661
35	6119828	1455662
42	6119839	1455663
54	6119841	1455664



6.3 VSH XPRESS-SYSTEM I ELFÖRZINKAT STÅL

VSH XPress



C1459 Elförzinkade stålrör
(längd 6 m)



Dimension	DN	Artikelnr.	RSK-nr.
12 × 1,2	10	6204594	1550780
15 × 1,2	12	6204605	1550781
18 × 1,2	15	6204616	1550782
22 × 1,5	20	6204627	1550783
28 × 1,5	25	6204638	1550784
35 × 1,5	32	6204649	1550785
42 × 1,5	40	6204651	1550786
54 × 1,5	50	6204660	1550787
66,7 × 1,5	60	6204836	1550798
76,1 × 2,0	65	6204803	1550788
88,9 × 2,0	80	6204814	1550789
108 × 2,0	100	6204825	1550790

C1460 Elförzinkade stålrör med PP-mantel
(6 m längd) polypropylenbelagda



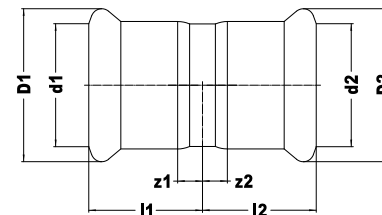
Dimension	DN	Artikelnr.	RSK-nr.
15 × 1,2	12	6204682	1550791
18 × 1,2	15	6204693	1550792
22 × 1,5	20	6204704	1550793
28 × 1,5	25	6204715	1550794
35 × 1,5	32	6204726	1550795
42 × 1,5	40	6204737	1550796
54 × 1,5	50	6204748	1550797

C1461 VSH XPress-sprinklerrör i elförzinkat stål
(längd 6 m)



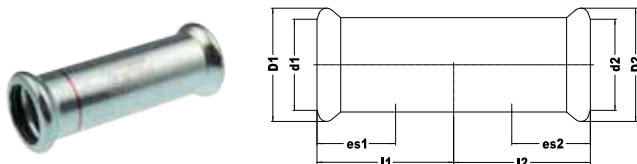
Dimension	DN	Artikelnr.	RSK-nr.
22 × 1,5	20	6241114	1550815
28 × 1,5	25	6241125	1550816
35 × 1,5	32	6241136	1550817
42 × 1,5	40	6241147	1550818
54 × 1,5	50	6241158	1550819
76,1 × 2,0	65	6241378	1552700
88,9 × 2,0	80	6241389	1552701
108 × 2,0	100	6241391	1552702

C1401 Muff
(2 × muff)



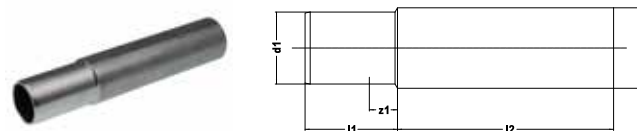
Dimension	l1/l2	z1/z2	Artikelnr.	RSK-nr.
12	24	7	6201351	1551620
15	27	7	6201360	1551621
18	27	7	6201371	1551622
22	28	7	6201382	1551623
28	30	7	6201393	1551624
35	33	7	6201404	1551625
42	38	8	6201415	1551827
54	43	8	6201426	1551828
66,7	60	10	6340411	1554372
76,1	63	8	6206200	1551977
88,9	72	9	6206211	1551978
108	86	9	6206222	1551979

C1403 Skjutmuff
(2 × muff)



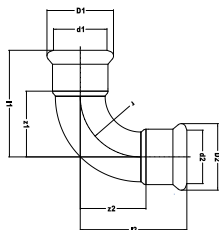
Dimension	l1/l2	es1/es2	Artikelnr.	RSK-nr.
12	34	25	6201437	1551748
15	40	25	6201448	1551749
18	40	25	6201459	1551750
22	42	25	6201461	1551751
28	46	30	6201470	1551752
35	52	30	6201481	1551753
42	61	40	6201492	1551754
54	70	40	6201503	1551755
66,7	99	60	6341357	1554373
76,1	115	60	6206233	1551980
88,9	131	70	6206244	1551981
108	151	80	6206255	1551982

C1432 Svetsövergång
(ej elförzinkat, svetsände × slätända)

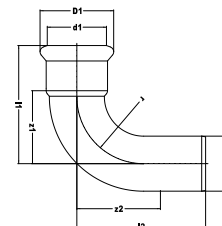


Dimension	l1	l2	z1	Artikelnr.	RSK-nr.
Ø17 × Ø15	35	85	9	6207817	1552087
Ø20 × Ø18	40	80	10	6207828	1552088
Ø24 × Ø22	48	72	13	6207168	1552089
Ø31 × Ø28	35	85	14	6207179	1552090
Ø38 × Ø35	35	85	12	6201514	1552091
Ø44,5 × Ø42	32	88	12	6201525	1552092
Ø57 × Ø54	32	88	12	6201536	1552093
Ø80,5 × Ø76,1	100	130	45	6206530	1552094
Ø94,9 × Ø88,9	115	115	52	6206541	1552095
Ø114 × Ø108	115	115	38	6206552	1552096

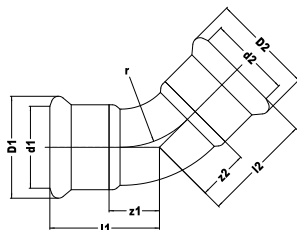
Efter svetsning måste en korrosionsskyddande beläggning påföras!

C1408 90° böj
(2 × muff)

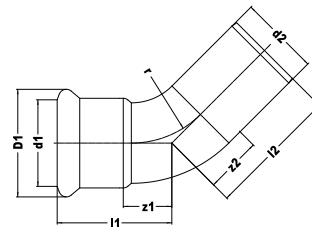
Dimension	l1/l2	z1/z2	r	Artikelnr.	RSK-nr.
12	35	18	15	6201547	1551643
15	41	21	18	6201558	1551644
18	45	25	22	6201569	1551645
22	51	30	27	6201571	1551646
28	61	38	34	6201580	1551647
35	72	46	42	6201591	1551648
42	87	57	51	6201602	1551649
54	105	70	65	6201613	1551650
66,7	145	95	80	6340281	1554360
76,1	155	100	92	6208004	1552125
88,9	179	116	107	6208048	1552126
108	216	139	130	6208059	1552127

C1411 90° böj
(muff × slätända)

Dimension	l1	l2	z1	z2	r	Artikelnr.	RSK-nr.
12 × Ø12	35	42	18	25	15	6201624	1551612
15 × Ø15	41	49	21	29	18	6201635	1551613
18 × Ø18	45	51	25	31	22	6201646	1551614
22 × Ø22	51	58	30	37	27	6201657	1551615
28 × Ø28	61	66	38	43	34	6201668	1551616
35 × Ø35	72	76	46	50	42	6201679	1551617
42 × Ø42	87	93	57	63	51	6201681	1551618
54 × Ø54	105	111	70	76	65	6201690	1551619
66,7 × Ø66,7	145	157	95	107	80	6340290	1554361
76,1 × Ø76,1	155	168	100	113	92	6208061	1552128
88,9 × Ø88,9	179	193	116	130	107	6208070	1552129
108 × Ø108	216	233	139	156	130	6208081	1552130

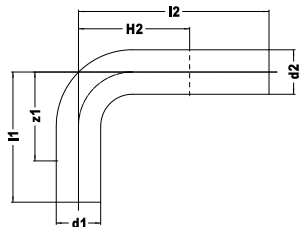
C1413 45° böj
(2 x muff)

Dimension	l1/l2	z1/z2	r	Artikelnr.	RSK-nr.
15	31	11	18	6201701	1551651
18	32	12	22	6201712	1551652
22	35	14	27	6201723	1551653
28	40	17	34	6201734	1551654
35	46	20	42	6201745	1551655
42	56	26	51	6201756	1551656
54	67	32	65	6201767	1551657
66,7	98	48	80	6340312	1554362
76,1	101	46	92	6208125	1552131
88,9	116	53	107	6208136	1552132
108	139	62	130	6208147	1552133

C1412 45° böj
(muff x slätända)

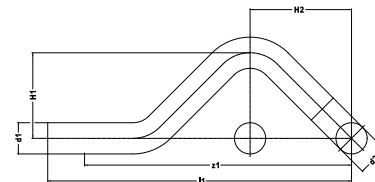
Dimension	l1	l2	z1	z2	r	Artikelnr.	RSK-nr.
15 x Ø15	31	38	11	18	18	6201778	1551605
18 x Ø18	32	39	12	19	22	6201789	1551606
22 x Ø22	35	42	14	21	27	6201791	1551607
28 x Ø28	40	46	17	23	34	6201800	1551608
35 x Ø35	46	51	20	25	42	6201811	1551609
42 x Ø42	56	63	26	33	51	6201822	1551610
54 x Ø54	67	73	32	38	65	6201833	1551611
66,7 x Ø66,7	98	110	48	60	80	6340301	1554363
76,1 x Ø76,1	101	114	46	59	92	6208092	1552134
88,9 x Ø88,9	116	130	53	67	107	6208103	1552135
108 x Ø108	139	157	62	80	130	6208114	1552136

C1425 90° böj
(2 × slätända)

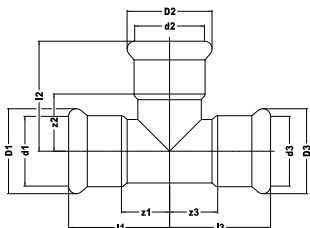


Dimension	l1	l2	z1	H2	Artikelnr.	RSK-nr.
Ø12	72	122	55	58	6201844	1552021
Ø15	72	122	52	58	6201855	1552022
Ø18	72	122	52	63	6201866	1552023
Ø22	74	122	53	70	6201877	1552024
Ø28	84	122	61	80	6201888	1552025
Ø35	122	202	96	100	6201899	1552026
Ø42	152	252	122	120	6201901	1552027
Ø54	202	302	167	145	6201910	1552028

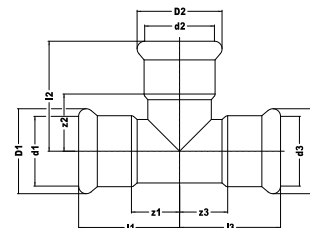
C1417 S-rör
(2 × slätända)



Dimension	l1	z1	H1	H2	Artikelnr.	RSK-nr.
Ø12	154	137	35	55	6201921	1552017
Ø15	158	138	37	57	6201932	1551765
Ø18	165	145	40	60	6201943	1552018
Ø22	178	157	44	65	6201954	1552019
Ø28	210	187	50	74	6201965	1552020

C1414 T-rör
(3 × muff)

Dimension	l1/l3	l2	z1/z3	z2	Artikelnr.	RSK-nr.
12	31	40	14	23	6202482	1551698
15	35	44	15	24	6202493	1551699
18	37	46	17	26	6202504	1551700
22	40	49	19	28	6202515	1551701
28	45	54	22	31	6202526	1551702
35	52	60	26	34	6202537	1551703
42	61	67	31	37	6202548	1551704
54	71	78	36	43	6202559	1551705
66,7	99	101	49	51	6340334	1554364
76,1	115	110	60	55	6206442	1551995
88,9	130	128	67	65	6206453	1551996
108	155	153	78	76	6206464	1551997

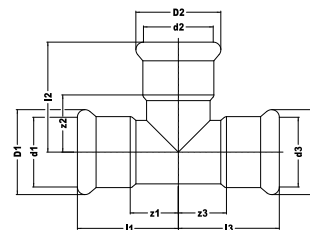
C1415 T-rör reducerat
(3 × muff)

Dim. (d1 × d2 × d3)	l1/l3	l2	z1/z3	z2	Artikelnr.	RSK-nr.
12 × 15 × 12	31	43	14	23	6202768	1551706
15 × 12 × 15	35	41	15	21	6202561	1551707
15 × 18 × 15	35	44	15	24	6202779	1551710
15 × 22 × 15	35	48	15	27	6202781	1551713
18 × 12 × 18	37	43	17	26	6202570	1551708
18 × 15 × 18	37	46	17	29	6202581	1551709
18 × 22 × 18	37	47	17	26	6202790	1551711
22 × 12 × 22	40	45	19	24	6202592	1551712
22 × 15 × 22	40	48	19	27	6202603	1551716
22 × 18 × 22	40	48	19	27	6202614	1551717
22 × 28 × 22	40	52	19	29	6202801	1551719
28 × 15 × 28	45	51	22	31	6202625	1551720
28 × 18 × 28	45	51	22	31	6202636	1551721
28 × 22 × 28	45	52	22	31	6202647	1551722
35 × 15 × 35	52	54	26	34	6202658	1551726
35 × 18 × 35	52	54	26	34	6202669	1551727
35 × 22 × 35	52	55	26	34	6202671	1551728
35 × 28 × 35	52	57	26	34	6202680	1551729

C1415 T-rör reducerat - forts.
(3 x muff)

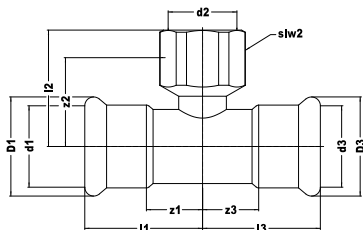
Dim. (d1 x d2 x d3)	l1/l3	l2	z1/z3	z2	Artikelnr.	RSK-nr.
42 x 22 x 42	60	58	30	37	6202691	1551838
42 x 28 x 42	60	60	30	37	6202702	1551839
42 x 35 x 42	60	63	30	37	6202713	1551730
54 x 22 x 54	71	64	36	43	6202724	1551840
54 x 28 x 54	71	66	36	43	6202735	1551841
54 x 35 x 54	71	69	36	43	6202746	1551842
54 x 42 x 54	71	73	36	43	6202757	1551731
66,7 x 28 x 66,7	99	70	49	47	6340345	1554365
66,7 x 35 x 66,7	99	74	49	48	6340356	1554366
66,7 x 42 x 66,7	99	80	49	50	6340367	1554367
66,7 x 54 x 66,7	99	83	49	48	6340378	1554368
76,1 x 22 x 76,1	115	68	60	47	6207047	1552703
76,1 x 28 x 76,1	115	85	60	62	6207058	1552704
76,1 x 35 x 76,1	115	87	60	61	6207069	1552705
76,1 x 42 x 76,1	115	97	60	67	6207071	1552706
76,1 x 54 x 76,1	115	110	60	75	6206475	1551998
76,1 x 66,7 x 76,1	126	105	71	55	6340389	1554369
88,9 x 22 x 88,9	130	76	67	55	6209654	1552707
88,9 x 28 x 88,9	130	92	67	69	6209665	1552708
88,9 x 35 x 88,9	130	97	67	71	6209676	1552709
88,9 x 42 x 88,9	130	105	67	75	6209687	1552710
88,9 x 54 x 88,9	130	117	67	82	6209698	1552711
88,9 x 66,7 x 88,9	128	112	65	62	6340391	1554370
88,9 x 76,1 x 88,9	130	117	67	62	6206486	1551999
108 x 22 x 108	155	85	78	64	6209711	1552712
108 x 28 x 108	155	102	78	79	6209720	1552713
108 x 35 x 108	155	107	78	81	6209731	1552714
108 x 42 x 108	155	115	78	85	6209742	1552715
108 x 54 x 108	155	128	78	93	6209753	1552716
108 x 76,1 x 108	155	128	78	73	6209764	1552717
108 x 88,9 x 108	155	137	78	82	6206497	1552000

C1416 T-rör reducerat
(3 x muff)



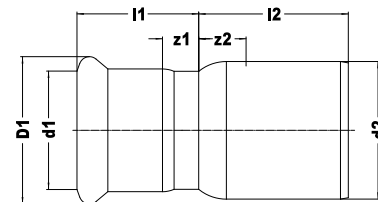
Dim. (d1 x d2 x d3)	l1	l2	l3	z1	z2	z3	Artikelnr.	RSK-nr.
22 x 15 x 15	40	48	47	19	28	27	6206739	1552276
22 x 22 x 15	40	49	49	19	28	29	6206741	1552277

C1418 T-rör med inv. gga
(muff x inv. gga x muff)



Dimension	l1/l3	l2	z1/z3	z2	slw2	Artikelnr.	RSK-nr.
15 x Rp1/2 x 15	35	15	37	22	24	6202812	1551733
18 x Rp1/2 x 18	37	17	37	22	24	6202823	1551734
18 x Rp3/4 x 18	37	17	40	24	30	6209841	1552264
22 x Rp1/2 x 22	40	19	39	24	24	6202834	1551735
22 x Rp3/4 x 22	40	19	41	25	30	6206706	1552149
22 x Rp1 x 22	40	19	46	23	41	6341995	1560008
28 x Rp1/2 x 28	45	22	42	27	24	6202845	1551737
28 x Rp3/4 x 28	45	22	44	28	30	6207181	1552060
28 x Rp1 x 28	45	22	48	25	41	6209601	1552634
35 x Rp1/2 x 35	52	26	46	31	24	6202856	1551738
35 x Rp3/4 x 35	52	26	48	31	30	6207102	1552061
35 x Rp1 x 35	52	26	52	29	41	6209610	1552635
42 x Rp1/2 x 42	61	31	48	33	24	6202867	1551739
42 x Rp3/4 x 42	61	31	50	34	30	6207113	1552062
42 x Rp1 x 42	61	31	54	31	41	6209621	1552636
54 x Rp1/2 x 54	71	36	54	39	24	6202878	1551740
54 x Rp3/4 x 54	71	36	56	40	30	6207124	1552063
54 x Rp1 x 54	71	36	60	37	41	6207795	1552278
66,7 x Rp3/4 x 66,7	99	49	65	62	30	6340400	1554371
76,1 x Rp3/4 x 76,1	115	60	82	66	30	6206508	1552001
88,9 x Rp3/4 x 88,9	130	67	84	68	30	6206519	1552002
108 x Rp3/4 x 108	155	78	94	78	30	6206521	1552003

C1407 Reducering
(slätända x muff)

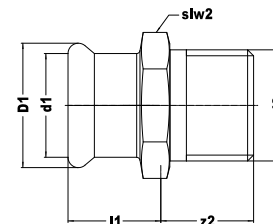


Dim. (d2 x d1)	l1	l2	z1	z2	Artikelnr.	RSK-nr.
Ø15 x 12	29	27	12	7	6202119	1551782
Ø18 x 12	27	29	10	9	6202121	1551784
Ø18 x 15	31	27	11	7	6202130	1551785
Ø22 x 12	27	33	10	12	6202141	1551787
Ø22 x 15	29	32	9	11	6202152	1551788
Ø22 x 18	32	29	12	8	6202163	1551789
Ø28 x 15	30	38	10	15	6202174	1551791
Ø28 x 18	30	36	10	13	6202185	1551792
Ø28 x 22	33	33	12	10	6202196	1551793
Ø35 x 22	30	41	9	15	6202207	1551795
Ø35 x 28	36	34	13	8	6202218	1551796
Ø42 x 22	32	51	11	21	6206651	1551929
Ø42 x 28	32	51	9	21	6206662	1551930
Ø42 x 35	39	41	13	11	6202229	1551798
Ø54 x 18	34	64	14	29	6206673	1552148
Ø54 x 22	34	63	13	28	6202231	1551931
Ø54 x 28	33	58	10	23	6202240	1551932
Ø54 x 35	38	57	12	22	6206684	1551933
Ø54 x 42	44	52	14	17	6202251	1551799

C1407 Reducering - forts.
(slätända x muff)

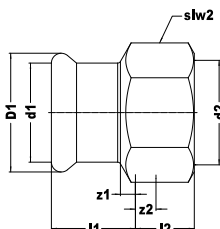
Dim. (d2 x d1)	l1	l2	z1	z2	Artikelnr.	RSK-nr.
Ø66,7 x 28	41	96	18	46	6340213	1554374
Ø66,7 x 35	38	84	12	34	6340224	1554375
Ø66,7 x 42	44	81	14	31	6340235	1554376
Ø66,7 x 54	48	72	13	22	6340246	1554377
Ø76,1 x 42	50	97	20	42	6206387	1552004
Ø76,1 x 54	55	86	20	31	6206398	1552005
Ø76,1 x 66,7	64	75	14	20	6340257	1554378
Ø88,9 x 54	54	101	19	38	6206409	1552006
Ø88,9 x 66,7	65	92	15	29	6340268	1554379
Ø88,9 x 76,1	68	90	13	27	6206411	1552007
Ø108 x 66,7	65	122	15	45	6340279	1554380
Ø108 x 76,1	68	120	13	43	6206420	1552008
Ø108 x 88,9	77	110	14	33	6206431	1552009

C1405 Övergångsnippel
(muff x utv. gga)



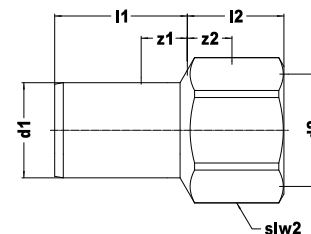
Dimension	l1	z2	slw2	Artikelnr.	RSK-nr.
12 x R3/8	17	14	22	6202262	1551658
15 x R3/8	20	15	24	6202273	1551660
15 x R1/2	20	19	24	6202284	1551661
18 x R1/2	20	19	27	6202295	1551663
18 x R3/4	20	20	27	6202306	1551664
22 x R1/2	21	22	32	6206717	1552146
22 x R3/4	21	23	32	6202317	1551666
22 x R1	21	29	34	6206728	1552147
28 x R3/4	23	23	38	6209852	1552263
28 x R1	23	25	41	6202328	1551669
35 x R1	26	27	46	6341247	1554384
35 x R1 1/4	26	29	46	6202339	1551670
42 x R1 1/2	30	29	55	6202341	1551671
54 x R2	35	34	70	6202350	1551672
66,7 x R2 1/2	50	40	85	6340422	1554385
76,1 x R2 1/2	55	64	80	6204781	1552123
88,9 x R3	63	69	95	6204792	1552124

C1402 Övergångsmuff
(muff × inv. gga)



Dimension	l1	l2	z1	z2	slw2	Artikelnr.	RSK-nr.
12 × Rp1/2	20	19	3	4	24	6202361	1551600
15 × Rp1/2	22	19	2	4	24	6202372	1551674
18 × Rp1/2	21	19	1	4	27	6202383	1551675
18 × Rp3/4	23	20	3	4	30	6202394	1551676
22 × Rp1/2	22	14	1	0	32	6340202	1552109
22 × Rp3/4	23	20	2	4	32	6202405	1551678
22 × Rp1	24	20	3	5	38	6341984	1560007
28 × Rp1/2	24	14	1	1	41	6207806	1552097
28 × Rp3/4	24	17	1	0	38	6209830	1552262
28 × Rp1	26	23	3	4	41	6202416	1551681
35 × Rp1/2	30	12	4	1	46	6340917	1554626
35 × Rp3/4	28	15	2	3	46	6340928	1554627
35 × Rp1	33	13	7	0	46	6340939	1552699
35 × Rp1 1/4	28	22	2	7	46	6206695	1552145
42 × Rp1 1/2	32	22	2	6	54	6341192	1554386
54 × Rp2	37	26	2	8	67	6341203	1554387

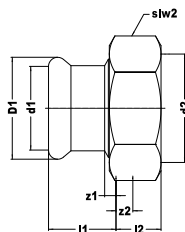
C1433 Övergång
(slätända × inv. gga)



Dimension	l1	l2	z1	z2	slw2	Artikelnr.	RSK-nr.
Ø12 × Rp3/8	25	17	8	6	19	6209874	1552265
Ø12 × Rp1/2	25	24	8	9	24	6202427	1552072
Ø15 × Rp1/2	28	23	8	8	24	6202438	1552073
Ø18 × Rp1/2	28	22	8	7	24	6202449	1552074
Ø18 × Rp3/4	28	25	8	9	30	6202451	1552075
Ø22 × Rp1/2	29	21	8	6	24	6202460	1552076
Ø22 × Rp3/4	29	24	8	8	30	6202471	1552077

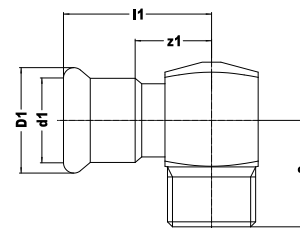
Var försiktig under pressningen så att pressbackarna inte kommer i kontakt med skruvnyckelns anliggningsytor!

C1404 Rak koppling
(muff x eurocone)



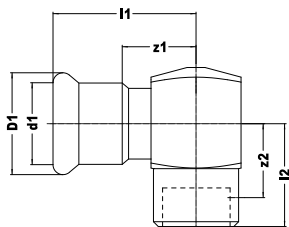
Dimension	l1	l2	z1	z2	slw2	Artikelnr.	RSK-nr.
15 x 3/4	21	16	1	7	30	6208169	1554622
18 x 3/4	22	16	2	7	30	6208171	1554623

C1428 Vinkel 90°
(muff x utv. gga)



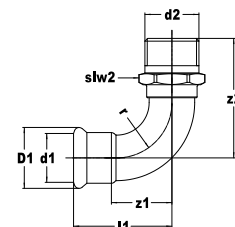
Dimension	l1	z1	z2	Artikelnr.	RSK-nr.
12 x R3/8	37	20	22	6202064	1551682
15 x R3/8	40	20	22	6202075	1551683
15 x R1/2	41	21	28	6202086	1551684
18 x R1/2	42	22	28	6202097	1551685
22 x R3/4	45	24	32	6202108	1551687

C1409 Vinkel 90°
(muff x inv. gga)



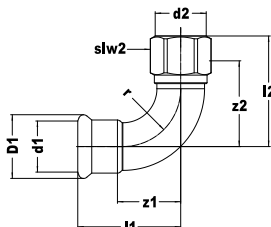
Dimension	l1	l2	z1	z2	Artikelnr.	RSK-nr.
22 × Rp1/2	45	31	24	16	6341038	1550777
28 × Rp1/2	51	35	28	20	6341049	1550778
35 × Rp1/2	57	35	31	20	6341051	1550779

C1430 90° böj
(muff x utv. gga)



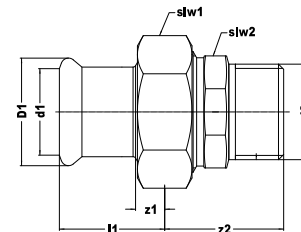
Dimension	l1	z1	z2	slw2	r	Artikelnr.	RSK-nr.
12 × R3/8	35	18	42	17	15	6201976	1551816
15 × R3/8	41	21	45	19	18	6201987	1551817
15 × R1/2	41	21	50	22	18	6201998	1551819
18 × R1/2	45	25	54	22	22	6202009	1551820
22 × R3/4	51	30	62	30	27	6202011	1551822
28 × R1	61	38	74	36	34	6202020	1551823
35 × R1 1/4	72	46	86	46	42	6202031	1551824
42 × R1 1/2	87	57	96	50	51	6202042	1551825
54 × R2	105	70	116	60	65	6202053	1551826

C1438 90° böj
(muff x inv. gga)



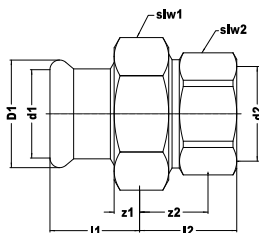
Dimension	l1	l2	z1	z2	slw2	r	Artikelnr.	RSK-nr.
15 x Rp3/8	41	42	21	31	19	18	6200931	1552266
15 x Rp1/2	41	48	21	33	24	18	6200942	1552267
18 x Rp1/2	45	52	25	37	24	22	6200953	1552268
22 x Rp1/2	51	59	30	44	27	27	6209577	1552631
22 x Rp3/4	51	59	30	43	30	27	6200964	1552269
28 x Rp1/2	61	65	38	50	32	34	6207025	1552272
28 x Rp3/4	61	65	38	49	32	34	6200986	1552273
28 x Rp1	61	70	38	51	41	34	6209588	1552632
35 x Rp1/2	72	75	46	55	41	42	6201063	1552274
35 x Rp3/4	72	75	46	54	41	42	6201074	1552275
35 x Rp1	72	75	46	56	41	42	6209599	1552633

C1435 Övergångskoppling med plantätning
(muff x utv. gga)



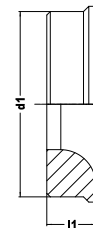
Dimension	l1	z1	z2	slw1	slw2	Artikelnr.	RSK-nr.
15 x R1/2	29	9	35	30	25	6207190	1552081
18 x R1/2	29	9	35	30	25	6207036	1554621
22 x R3/4	30	9	40	36	32	6207201	1552082
28 x R1	31	8	44	46	39	6207212	1552083
35 x R1 1/4	34	8	48	52	49	6207223	1552084
42 x R1 1/2	41	11	47	58	51	6207234	1552085
54 x R2	47	12	53	75	65	6207245	1552086

C1444 Övergångskoppling med plantätning
(muff x inv. gga)



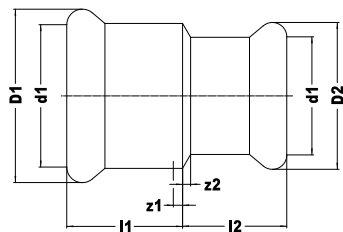
Dimension	l1	l2	z1	z2	slw1	slw2	Artikelnr.	RSK-nr.
15 x Rp1/2	29	30	9	15	30	27	6208906	1552692
18 x Rp1/2	29	30	9	15	30	27	6208917	1552693
22 x Rp3/4	30	33	9	17	36	34	6208928	1552694
28 x Rp1	31	34	8	15	46	42	6208939	1552695
35 x Rp1 1/4	34	42	8	20	52	50	6208941	1552696
42 x Rp1 1/2	41	42	11	20	58	55	6208950	1552697
54 x Rp2	47	46	12	20	75	70	6208961	1552698

C1431 Venturi-rör



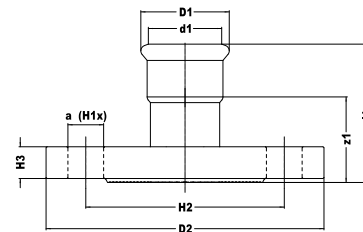
Dimension	l1	Artikelnr.	RSK-nr.
Ø18	6	6202922	1552078
Ø22	7	6202933	1552079
Ø28	7	6202944	1552080

C1439 Reducering
(2 x muff)



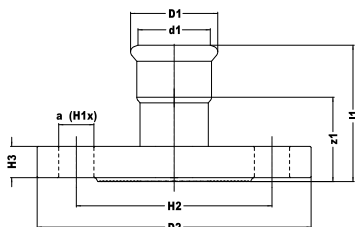
Dimension	l1	l2	z1/z2	Artikelnr.	RSK-nr.
22 x 15	23	22	2	6201129	1552270
28 x 22	25	23	2	6201131	1552271

C1426 Flänskoppling PN10/16
(1 x muff)



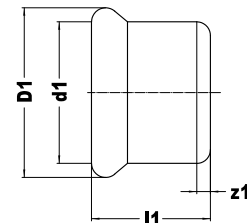
Dimension	l1	z1	H1	H2	H3	a	hål	Artikelnr.	RSK-nr.
35	70	44	4	100	16	18	4	6341500	1554617
42	77	47	4	110	16	18	4	6341511	1554618
54	87	52	4	125	16	18	4	6341522	1554619
66,7	89	39	4	145	16	18	4	6340323	1554388
76,1	112	57	4	145	16	18	4	6206596	1552013
88,9	118	55	8	160	18	18	8	6206607	1552014
108	114	37	8	180	18	18	8	6206618	1552015

C1427 Flänskoppling PN6
(1 x muff)



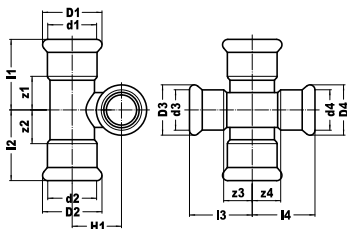
Dimension	l1	z1	H1	H2	H3	a	håll	Artikelnr.	RSK-nr.
66,7	85	37	4	130	12	14	4	6207080	1554620
76,1	108	53	4	130	12	14	4	6206629	1552098
88,9	114	51	4	150	14	18	4	6206631	1552099
108	110	33	4	170	14	18	4	6206640	1552100

C1429 Huv
(1 x muff)



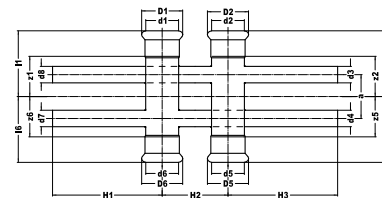
Dimension	l1	z1	Artikelnr.	RSK-nr.
15	23	3	6202955	1551809
18	23	3	6202966	1551810
22	24	3	6202977	1551811
28	26	3	6202988	1551812
35	29	3	6202999	1551813
42	37	7	6203001	1551814
54	42	7	6203010	1551815
66,7	60	10	6340171	1554389
76,1	64	9	6206915	1552279
88,9	72	9	6206926	1552280
108	97	20	6206937	1552281

C1434 90° korsrör
(4 × muff)



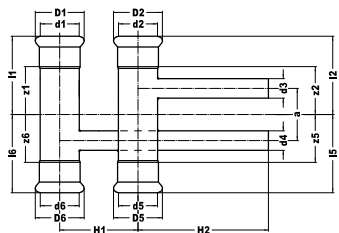
Dimension	l1/l3	l2/l4	z1/z3	z2/z4	H1	Artikelnr.	RSK-nr.
15 × 15 × 15 × 15	35	35	15	15	21	6202889	1551844
18 × 15 × 18 × 15	37	35	17	15	23	6202891	1551845
22 × 15 × 22 × 15	40	35	19	15	25	6202900	1551846
22 × 18 × 22 × 18	40	37	19	17	26	6202911	1551848
28 × 15 × 28 × 15	45	35	22	15	28	6207135	1552064
28 × 18 × 28 × 18	45	37	22	17	29	6207146	1552065
28 × 22 × 28 × 22	45	40	22	19	31	6207157	1552066

C1436 Stamfördelare dubbel
(muff × slätända)



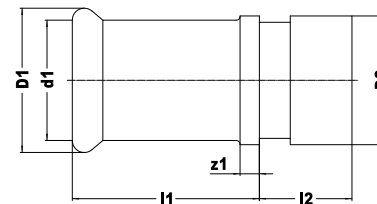
Dimension	l1/l2/l5/l6	z1/z2/z5/z6	H1/H3	H2	a	Artikelnr.	RSK-nr.
12 × Ø12	50	33	100	60	40	6206750	1552168
15 × Ø12	60	40	100	60	40	6206761	1552169
15 × Ø15	60	40	100	60	40	6206772	1552170
18 × Ø12	60	40	100	60	40	6206783	1552171
18 × Ø15	60	40	100	60	40	6206794	1552172
22 × Ø12	60	39	100	60	40	6206948	1552196
22 × Ø15	60	39	100	60	40	6206805	1552173
28 × Ø12	60	37	100	60	40	6206816	1552174
28 × Ø15	60	37	100	60	40	6206827	1552175
35 × Ø15	60	34	100	60	40	6206838	1552176

C1437 Stamfördelare enkel
(muff x slätända)



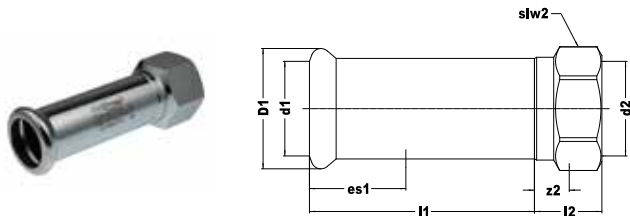
Dimension	l1/l2/l5/l6	z1/z2/z5/z6	H1	H2	a	Artikelnr.	RSK-nr.
12 × Ø12	50	33	60	100	40	6206959	1552197
15 × Ø12	60	40	60	100	40	6206961	1552198
15 × Ø15	60	40	60	100	40	6206849	1552177
18 × Ø12	60	40	60	100	40	6206851	1552178
18 × Ø15	60	40	60	100	40	6206860	1552179
22 × Ø12	60	39	60	100	40	6206871	1552180
22 × Ø15	60	39	60	100	40	6206882	1552181
28 × Ø12	60	37	60	100	40	6206893	1552182
28 × Ø15	60	37	60	100	40	6206904	1552183

C1442 Övergångskoppling
(muff x rillad)



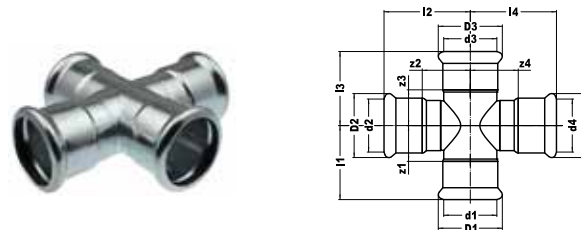
Dimension	l1	l2	z1	Artikelnr.	RSK-nr.
28 × 33,7	49	24	26	6241301	1552298
35 × 42,4	28	24	2	6241081	1554381
35 × 42,4	54	24	28	6241345	1552292
42 × 48,3	31	24	1	6241092	1554382
42 × 48,3	61	24	31	6241356	1552293
54 × 60,3	36	24	1	6241103	1554383
54 × 60,3	73	24	38	6241367	1552294
76,1 × 73	68	24	13	6341181	1554628
76,1 × 76,1	56	24	1	6340774	1552738
88,9 × 88,9	76	24	13	6340785	1552739
108 × 114	84	26	7	6340796	1552740

C1443 Skjutmuff
(muff × inv. gga)



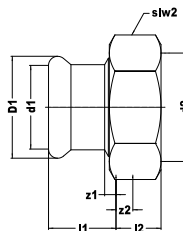
Dimension	l1	l2	z2	es1	slw2	Artikelnr.	RSK-nr.
22 × Rp1/2	92	22	15	21	32	6241312	1552616
22 × Rp3/4	97	27	17	21	32	6241323	1552617
28 × Rp1/2	94	24	15	23	28	6241268	1552618
28 × Rp3/4	93	23	17	23	32	6241279	1552619

C1447 90° korsrör
(4 × muff)



Dimension	l1/l3	l2/l4	z1/z3	z2/z4	Artikelnr.	RSK-nr.
35 × 35 × 35 × 35	52	60	26	34	6340972	1552732
42 × 42 × 42 × 42	61	67	31	37	6340983	1552733
54 × 54 × 54 × 54	71	78	36	43	6340994	1552734
35 × 28 × 35 × 28	52	57	26	34	6341005	1552735
42 × 28 × 42 × 28	61	60	31	37	6341016	1552736
54 × 28 × 54 × 28	71	66	36	43	6341027	1552737

C1446 Övergångskoppling med lekande mutter
(muff × inv. gga)



Dimension	l1	l2	z1	z2	slw2	Artikelnr.	RSK-nr.
15 × G3/4	29	8	9	2	30	6340521	1552718
18 × G3/4	29	8	9	2	30	6340532	1552719
22 × G1	30	10	9	2	36	6340554	1552720
28 × G1 1/4	31	10	8	2	46	6340565	1552721
35 × G1 1/2	34	11	8	2	52	6340576	1552722
42 × G1 3/4	41	11	11	2	52	6340587	1554624
54 × G2 3/8	47	11	12	3	75	6340598	1554625

C1451 O-ring med LBP-funktion (Leak Before Pressed)
(svart, EPDM) för syrafäst och elförzinkat stål (EJ för koppars!)



Dimension	Artikelnr.	RSK-nr.
12	6222205	1552137
15	6222216	1552138
18	6222227	1552139
22	6222238	1552140
28	6222249	1552141
35	6222251	1552142
42	6222260	1552143
54	6222271	1552144

R2760 O-ring, standard
(svart, EPDM) för syrafast och elförzinkat stål



Dimension	Artikelnr.	RSK-nr.
66,7	6208180	1454377
76,1	6208015	1454278
88,9	6208026	1454279
108	6208037	1454280

C1452 Plan tätning
(svart, EPDM) för syrafast och elförzinkat stål



Dimension	Artikelnr.	RSK-nr.
15-18	6228013	1455941
22	6228024	1455942
28	6228035	1455943
35	6228046	1455944
42	6228057	1455958
54	6228068	1455959

C2767 Plan tätning
(svart, EPDM) för syrafast och elförzinkat stål



Dimension	Artikelnr.	RSK-nr.
15-18	6118301	1456781
22	6118310	1456782
28	6118321	1456783
35	6118332	1456784
42	6118343	1456785
54	6118354	1456786

R2764 O-ring (LBP) för särskilda tillämpningar
(grön, FPM) för syrafast och elförzinkat stål



Dimension	Artikelnr.	RSK-nr.
15	6119401	1454336
18	6119410	1454337
22	6119421	1454338
28	6119432	1454339
35	6119443	1454340
42	6119454	1454341
54	6119465	1454342

R2761 O-ring för särskilda tillämpningar
(grön, FPM) för syrafast och elförzinkat stål



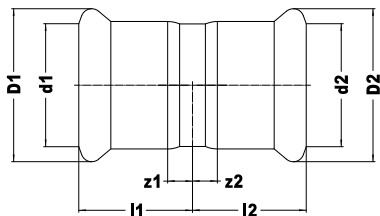
Dimension	Artikelnr.	RSK-nr.
66,7	6119476	1454378
76,1	6119377	1454275
88,9	6119388	1454276
108	6119399	1454277



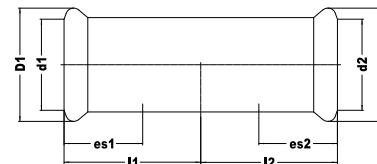
6.4 VSH XPRESS-SYSTEM I KOPPAR

VSH XPress

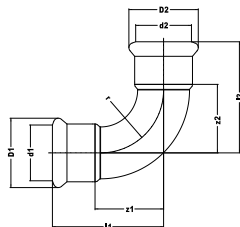


7270 Muff
(2 x muff)

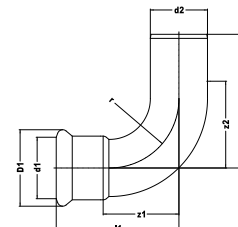
Dimension	l1/l2	z1/z2	Artikelnr.	RSK-nr.
12	21	4	38009	1767000
15	22	2	38010	1767001
18	22	2	38011	1767002
22	23	2	38020	1767003
28	25	2	38030	1767004
35	28	2	38032	1767005
42	36	4	38034	1767006
54	42	5	38035	1767007
66,7	55	5	38036	1759767
76,1	55	5	38037	1767008
88,9	66	8	38039	1767009
108	72	5	38038	1767010

7270S Skjutmuff
(2 x muff)

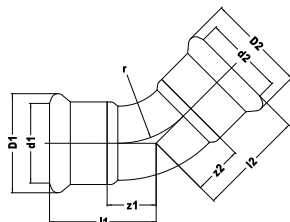
Dimension	l1/l2	z1/z2	es1/es2	Artikelnr.	RSK-nr.
15	40	20	20	38044	1767036
18	40	20	20	38054	1767037
22	42	21	21	38045	1767038
28	46	23	23	38046	1767039
35	50	25	25	38047	1767040
42	60	30	30	38048	1767041
54	71	35	36	38049	1767042
66,7	55	5	50	38040	1759774
76,1	55	5	50	38041	1767043
88,9	66	4	50	38042	1767044
108	72	5	68	38043	1767045

7002A 90° böj
(2 × muff)

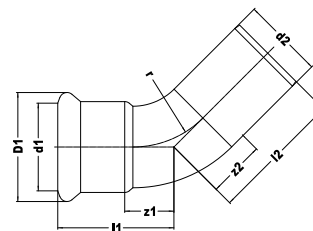
Dimension	l1/l2	z1/z2	r	Artikelnr.	RSK-nr.
12	31	14	14	38279	1767166
15	38	17	17	38280	1767167
18	42	22	22	38382	1767168
22	47	26	26	38290	1767169
28	56	34	34	38300	1767170
35	68	42	42	38302	1767171
42	80	50	50	38304	1767172
54	100	65	65	38306	1767173
66,7	132	87	80	38307	1759720
76,1	142	92	90	38308	1767174
88,9	170	106	105	38309	1767175
108	201	135	161	38310	1767176

7001A 90° böj
(muff × slätända)

Dimension	l1	l2	z1	z2	r	Artikelnr.	RSK-nr.
12 × Ø12	31	45	14	28	14	38317	1767188
15 × Ø15	36	50	16	30	18	38318	1767189
18 × Ø18	42	53	22	33	22	38319	1767190
22 × Ø22	47	58	27	38	26	38320	1767191
28 × Ø28	58	64	34	40	34	38322	1767192
35 × Ø35	69	82	44	57	42	38324	1767193
42 × Ø42	81	101	52	72	50	38325	1767194
54 × Ø54	100	120	66	86	65	38326	1767195
66,7 × Ø66,7	130	175	78	123	80	38327	1759721
76,1 × Ø76,1	143	150	93	100	90	38328	1767196
88,9 × Ø88,9	170	178	112	116	106	38329	1767197
108 × Ø108	208	259	141	194	161	38330	1767198

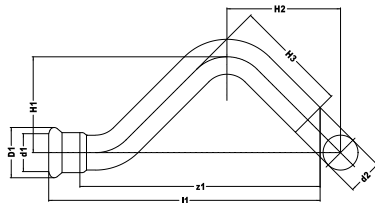
7041 45° böj
(2 x muff)

Dimension	l1/l2	z1/z2	r	Artikelnr.	RSK-nr.
12	23	6	14	38411	1767283
15	28	8	18	38410	1767284
18	29	9	22	38413	1767285
22	31	12	26	38412	1767286
28	37	16	34	38414	1767287
35	44	18	42	38416	1767288
42	51	21	50	38417	1767289
54	62	27	65	38418	1767290
66,7	85	35	80	38419	1759722
76,1	91	45	91	38420	1767330
88,9	109	46	107	38421	1767331
108	125	59	130	38422	1767332

7040 45° böj
(muff x slätända)

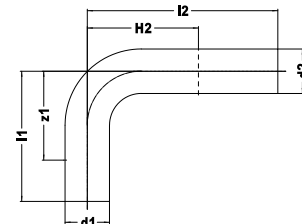
Dimension	l1	l2	z1	z2	r	Artikelnr.	RSK-nr.
12 x Ø12	23	32	6	15	14	38402	1767291
15 x Ø15	28	37	8	17	18	38404	1767292
18 x Ø18	29	39	9	19	22	38403	1767293
22 x Ø22	32	44	11	23	26	38405	1767294
28 x Ø28	37	47	14	24	34	38406	1767295
35 x Ø35	43	58	17	32	42	38407	1767296
42 x Ø42	51	71	21	41	50	38408	1767297
54 x Ø54	62	82	27	47	65	38409	1767298
66,7 x Ø66,7	85	88	35	38	80	38430	1759723
76,1 x Ø76,1	90	97	40	54	91	38431	1767299
88,9 x Ø88,9	109	116	47	54	107	38433	1767300
108 x Ø108	115	136	50	69	130	38432	1767301

7086 S-rör
(muff x slätända)



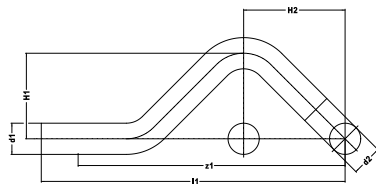
Dimension	l1	z1	H1	H2	H3	Artikelnr.	RSK-nr.
15 x Ø15	110	90	25	40	44	38435	1767277
18 x Ø18	120	100	27	45	49	38437	1767278
22 x Ø22	134	113	30	50	55	38436	1767279

7005 90° passböj
(2 x slätända)



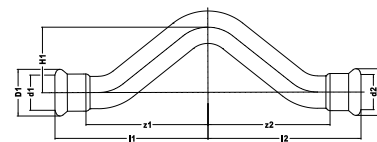
Dimension	l1	l2	z1	H2	Artikelnr.	RSK-nr.
Ø15	70	120	50	100	38390	1767360
Ø18	70	120	50	100	38391	1767361
Ø22	70	120	49	99	38392	1767362
Ø28	80	120	57	97	38393	1767363

7087 S-rör
(2 x slätända)

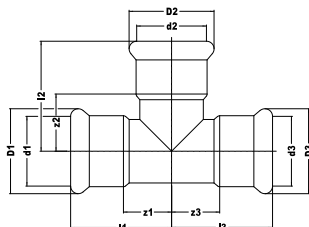


Dimension	l1	z1	H1	H2	Artikelnr.	RSK-nr.
Ø15	118	98	33	41	38438	1767274
Ø18	128	108	36	45	38434	1767275
Ø22	142	121	40	50	38439	1767276

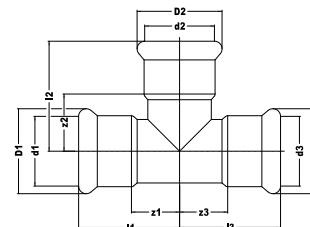
7085 Bygelrör
(2 x muff)



Dimension	l1/l2	z1/z2	H1	Artikelnr.	RSK-nr.
15	70	50	26	38440	1767280
18	76	56	27	38442	1767281
22	85	64	28	38441	1767282

7130 T-rör
(3 × muff)

Dimension	l1/l3	l2	z1/z3	z2	Artikelnr.	RSK-nr.
12	28	28	11	11	38472	1767199
15	32	32	12	12	38450	1767200
18	34	34	14	14	38451	1767201
22	37	37	16	16	38460	1767202
28	42	42	19	19	38462	1767203
35	50	50	24	24	38464	1767204
42	58	58	28	28	38466	1767205
54	69	69	34	34	38467	1767206
66,7	95	111	45	62	38468	1760243
76,1	101	119	51	69	38469	1767207
88,9	162	162	100	100	38470	1767208
108	159	159	92	92	38471	1767209

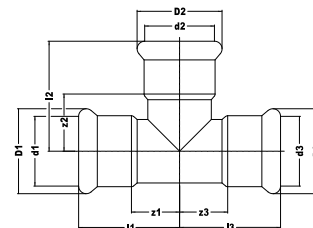
7125 T-rör reducerat
(3 × muff)

Dim. (d1 × d2 × d3)	l1/l3	l2	z1/z3	z2	Artikelnr.	RSK-nr.
15 × 12 × 15	32	32	12	15	38488	1767211
18 × 12 × 18	34	35	14	15	38451	1767215
18 × 15 × 18	34	35	14	15	38454	1767217
22 × 12 × 22	37	34	16	17	38491	1767381
22 × 15 × 22	37	38	16	18	38490	1767221
22 × 18 × 22	37	38	16	18	38535	1767224
28 × 12 × 28	42	37	19	20	38493	1767383
28 × 15 × 28	42	41	19	21	38492	1767227
28 × 18 × 28	42	41	19	21	38538	1767229
28 × 22 × 28	42	41	19	20	38494	1767231
28 × 35 × 28	42	50	26	24	38549	1760242
35 × 15 × 35	45	44	19	24	38496	1767233
35 × 22 × 35	45	45	19	24	38497	1767234
35 × 28 × 35	50	44	24	21	38498	1767235
42 × 15 × 42	50	48	20	28	38499	1767236
42 × 22 × 42	50	48	20	27	38500	1767237
42 × 28 × 42	56	49	26	26	38501	1767238
42 × 35 × 42	56	50	26	24	38502	1767239

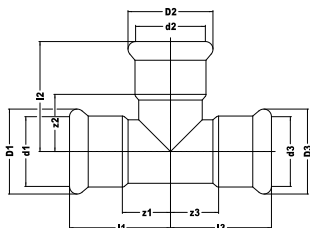
7125 T-rör reducerat - forts.
(3 x muff)

Dim. (d1 x d2 x d3)	l1/l3	l2	z1/z3	z2	Artikelnr.	RSK-nr.
54 x 22 x 54	60	54	25	33	38504	1767240
54 x 28 x 54	60	55	25	32	38505	1767241
54 x 35 x 54	61	55	24	29	38506	1767242
54 x 42 x 54	69	64	34	34	38507	1767243
66,7 x 28 x 66,7	76	67	26	43	38550	1760245
66,7 x 35 x 66,7	80	70	29	43	38560	1760244
66,7 x 42 x 66,7	82	76	32	41	38561	1760246
66,7 x 54 x 66,7	88	78	47	43	38562	1760247
76,1 x 22 x 76,1	73	73	22	50	38563	1760249
76,1 x 28 x 76,1	77	73	26	50	38564	1760250
76,1 x 35 x 76,1	80	78	30	53	38553	1767244
76,1 x 42 x 76,1	103	106	55	70	38551	1767245
76,1 x 54 x 76,1	93	85	41	50	38552	1767246
88,9 x 54 x 88,9	136	119	77	77	38554	1767247
88,9 x 76,1 x 88,9	151	146	91	96	38556	1767248
108 x 54 x 108	127	122	63	87	38555	1767249
108 x 66,7 x 108	117	141	46	96	38565	1760251
108 x 76,1 x 108	120	139	52	88	38557	1767250
108 x 88,9 x 108	126	151	59	90	38558	1767251

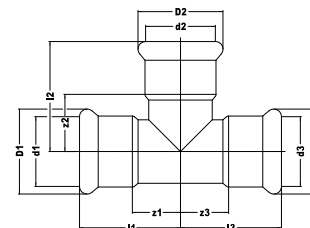
7126 T-rör reducerat
(3 x muff)



Dim. (d1 x d2 x d3)	l1/l2	l3	z1/z2	z3	Artikelnr.	RSK-nr.
15 x 15 x 12	32	36	12	19	38508	1767212
18 x 18 x 15	34	42	14	22	38455	1767218
22 x 22 x 15	37	46	16	26	38510	1767225
22 x 22 x 18	37	43	16	23	38511	1767226
28 x 28 x 15	42	55	19	35	38512	1767385
28 x 28 x 22	42	52	19	31	38514	1767232
35 x 35 x 22	51	72	25	51	38517	1767390
35 x 35 x 28	51	67	25	41	38518	1767391

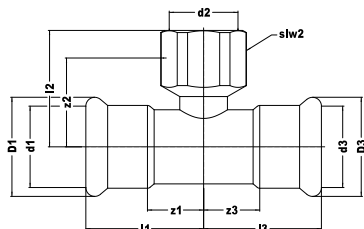
7127 T-rör reducerat
(3 × muff)

Dim. (d1 × d2 × d3)	l1	l2	l3	z1	z2	z3	Artikelnr.	RSK-nr.
15 × 12 × 12	32	32	32	12	15	15	38527	1767210
18 × 15 × 15	34	35	40	14	15	20	38453	1767216
22 × 15 × 15	37	44	43	16	18	23	38530	1767219
22 × 15 × 18	37	44	34	16	18	14	38531	1767220
22 × 18 × 15	37	38	44	16	18	24	38533	1767222
22 × 18 × 18	37	38	41	16	18	21	38534	1767223
28 × 15 × 22	42	41	46	19	21	25	38536	1767384
28 × 18 × 22	42	41	47	19	21	26	38529	1767228
28 × 22 × 22	42	41	49	19	20	28	38532	1767230
35 × 22 × 22	51	44	67	25	23	45	38539	1760254
35 × 22 × 28	51	44	63	25	23	40	38541	1760255
35 × 28 × 28	51	44	67	25	21	44	38542	1760256
42 × 35 × 35	56	50	74	26	24	48	38546	1760257
54 × 42 × 42	69	64	83	34	34	53	38566	1760258

7128 T-rör reducerat
(3 × muff)

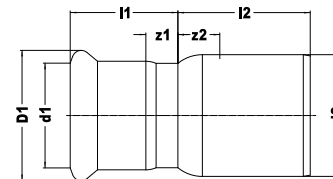
Dim. (d1 × d2 × d3)	l1	l2	l3	z1	z2	z3	Artikelnr.	RSK-nr.
12 × 15 × 12	36	32	36	19	15	15	38447	1760241
15 × 18 × 15	35	32	23	15	12	35	38547	1767213
15 × 22 × 15	38	34	23	18	13	38	38545	1767214
22 × 28 × 22	52	42	52	31	19	31	38548	1767382

6130G T-rör med inv. gga
(muff x inv. gga x muff)



Dimension	l1/l3	l2	z1/z3	z2	slw2	Artikelnr.	RSK-nr.
12 x Rp1/2 x 12	34	26	14	10	26	38584	1767252
15 x Rp1/2 x 15	34	25	14	13	26	38585	1767253
18 x Rp1/2 x 18	42	24	22	8	26	38586	1767254
22 x Rp1/2 x 22	42	26	21	11	26	38591	1767255
22 x Rp3/4 x 22	45	27	24	11	32	38587	1767256
28 x Rp1/2 x 28	44	29	21	14	26	38592	1767257
28 x Rp3/4 x 28	42	35	19	14	32	38593	1767258
35 x Rp1/2 x 35	50	34	24	19	26	38594	1767259
42 x Rp1/2 x 42	57	38	27	23	26	38596	1767260
54 x Rp1/2 x 54	69	44	34	29	26	38597	1767261
76,1 x Rp1/2 x 76,1	65	48	15	30	-	38190	1760252
108 x Rp1/2 x 108	82	65	15	53	-	38191	1760253

7243 Reducering
(slätända x muff)

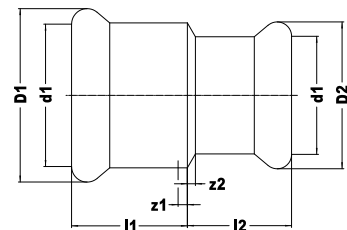


Dim. (d2 x d1)	l1	l2	z1	z2	Artikelnr.	RSK-nr.
Ø15 x 12	21	23	4	3	38193	1767064
Ø18 x 12	21	26	4	6	38196	1767065
Ø18 x 15	24	23	4	3	38197	1767066
Ø22 x 15	24	28	4	7	38200	1767067
Ø22 x 18	24	26	4	5	38201	1767068
Ø28 x 15	25	37	4	14	38202	1767069
Ø28 x 18	26	35	4	12	38203	1767070
Ø28 x 22	25	30	4	7	38204	1767071
Ø35 x 22	29	39	9	13	38207	1767072
Ø35 x 28	28	35	5	9	38208	1767073
Ø42 x 22	25	49	4	19	38210	1767074
Ø42 x 28	27	44	4	14	38211	1767075
Ø42 x 35	35	38	8	8	38212	1767076
Ø54 x 28	27	59	4	24	38215	1767077
Ø54 x 35	35	53	9	18	38216	1767078
Ø54 x 42	40	47	9	12	38217	1767079
Ø66,7 x 28	37	72	14	22	38218	1760235
Ø66,7 x 35	40	69	14	19	38219	1760236
Ø66,7 x 42	43	67	13	17	38220	1760237
Ø66,7 x 54	49	63	14	13	38221	1760238

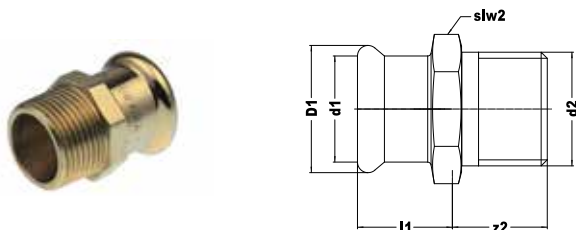
7243 Reducering - forts.
(slätända x muff)

Dim. (d2 x d1)	l1	l2	z1	z2	Artikelnr.	RSK-nr.
Ø76,1 x 35	39	74	13	24	38222	1767080
Ø76,1 x 42	43	70	13	20	38223	1767081
Ø76,1 x 54	52	64	17	14	38224	1767082
Ø76,1 x 66,7	66	60	16	10	38225	1760239
Ø88,9 x 42	46	89	16	27	38233	1767083
Ø88,9 x 54	48	84	13	22	38226	1767084
Ø88,9 x 76,1	65	75	15	13	38227	1767085
Ø108 x 42	47	106	17	39	38228	1767086
Ø108 x 54	54	102	20	35	38229	1767087
Ø108 x 66,7	70	96	20	29	38230	1760240
Ø108 x 76,1	70	92	20	25	38231	1767088
Ø108 x 88,9	82	84	20	17	38232	1767089

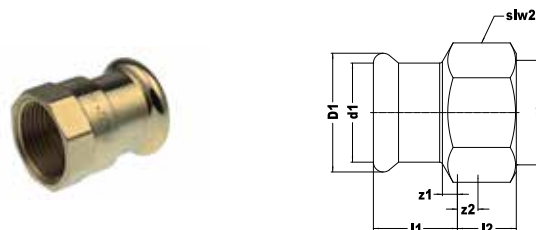
7240 Reducering
(2 x muff)



Dimension	l1	l2	z1	z2	Artikelnr.	RSK-nr.
15 x 12	23	22	3	5	38063	1767373
16 x 15	22	20	1	1	-	1767013
22 x 15	28	25	7	5	38064	1767374
28 x 15	35	23	12	3	38065	1767375
28 x 22	29	26	6	5	38066	1767376
35 x 28	33	28	7	5	38067	1767377
42 x 35	37	31	7	5	38068	1767378
54 x 42	46	34	11	4	38069	1767379

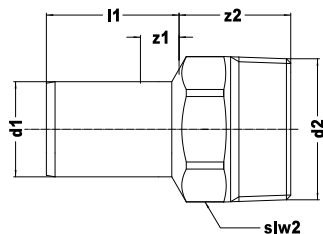
6243G Övergångsnippel
(muff x utv. gga)

Dimension	l1	l2	z2	slw2	Artikelnr.	RSK-nr.
12 x R3/8	17	15	9	19	38105	1767015
12 x R1/2	17	19	11	19	38106	1767016
15 x R3/8	20	13	7	21	38107	1767017
15 x R1/2	20	17	8	21	38114	1767018
15 x R3/4	20	19	10	25	38115	1767019
18 x R1/2	20	17	9	25	38108	1767020
18 x R3/4	20	19	10	25	38109	1767021
22 x R1/2	21	17	9	30	38110	1767022
22 x R3/4	21	19	10	30	38116	1767023
22 x R1	21	21	11	32	38117	1767024
28 x R3/4	23	20	10	36	38111	1767025
28 x R1	23	21	11	36	38118	1767026
28 x R1 1/4	23	25	12	36	38127	1767027
35 x R1	26	22	12	41	38112	1767028
35 x R1 1/4	26	28	15	41	38119	1767029
42 x R1 1/4	30	28	16	51	38113	1767030
42 x R1 1/2	30	28	16	51	38120	1767031
54 x R2	35	28	12	57	38121	1767032
66,7 x R2 1/2	50	43	25	74	38122	17670325
76,1 x R2 1/2	50	48	31	76	38126	1767033
76,1 x R3	50	60	39	77	38159	1767365
88,9 x R3	62	51	30	100	38125	1767034
108 x R4	68	64	38	107	38124	1767035

6270G Övergångsmuff
(muff x inv. gga)

Dimension	l1	l2	z1	z2	slw2	Artikelnr.	RSK-nr.
12 x Rp3/8	17	14	0	6	20	38082	1767046
12 x Rp1/2	18	17	0	8	22	38081	1767047
15 x Rp3/8	20	14	2	6	20	38083	1767048
15 x Rp1/2	20	18	3	8	25	38090	1767049
15 x Rp3/4	21	19	5	8	30	38091	1767050
18 x Rp1/2	19	18	2	8	25	38084	1767051
18 x Rp3/4	20	19	2	9	30	38085	1767052
22 x Rp1/2	20	17	1	7	30	38086	1767053
22 x Rp3/4	20	19	0	9	30	38092	1767054
22 x Rp1	21	22	3	11	37	38087	1767055
28 x Rp3/4	23	17	3	7	37	38088	1767056
28 x Rp1	23	22	3	10	37	38093	1767057
28 x Rp1 1/4	24	24	2	10	46	38103	1767058
35 x Rp3/4	29	15	4	4	30	38080	1767518
35 x Rp1	24	22	5	10	42	38089	1767059
35 x Rp1 1/4	25	25	3	11	46	38094	1767060
42 x Rp1 1/4	30	22	0	8	46	38101	1767061
42 x Rp1 1/2	29	25	3	11	48	38095	1767062
54 x Rp2	34	25	3	11	48	38096	1767063

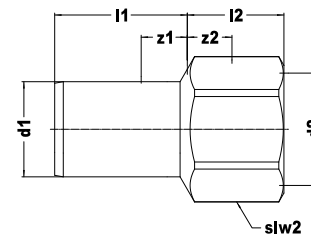
6280G Övergångsnippel
(slätända x utv. gga)



Dimension	l1	l2	z1	z2	slw2	Artikelnr.	RSK-nr.
15 × R1/2	30	21	10	12	19	4803251	1767100
18 × R1/2	30	20	10	12	19	38173	1767101
18 × R3/4	30	23	10	14	25	38174	1767102
22 × R1/2	30	21	9	13	25	38175	1767103
22 × R3/4	30	23	9	13	25	38171	1767104
28 × R1	32	26	9	15	32	38172	1767105
35 × R1 1/4	35	29	9	16	36	38176	1767106
42 × R1 1/2	51	29	21	16	46	38177	1767107

Var försiktig under pressningen så att pressbackarna inte kommer i kontakt med skruvnyckelns anliggningsytor!

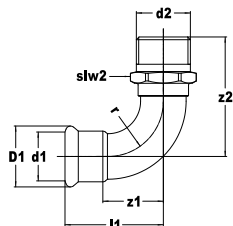
6246G Övergångsmuff
(slätända x inv. gga)



Dimension	l1	l2	z1	z2	slw2	Artikelnr.	RSK-nr.
15 × Rp1/2	30	18	10	3	22	38160	1767262
18 × Rp1/2	30	17	10	3	22	38157	1767263
18 × Rp3/4	30	20	10	3	30	38158	1767264
22 × Rp1/2	30	17	9	2	22	38159	1767265
22 × Rp3/4	30	19	9	3	30	38161	1767266
28 × Rp3/4	32	18	9	2	30	38166	1767267
28 × Rp1	32	22	9	3	37	38162	1767268
35 × Rp1	35	21	9	2	37	38167	1767269
35 × Rp1 1/4	35	25	9	4	46	38163	1767270
42 × Rp1 1/2	51	25	21	4	48	38164	1767271
54 × Rp2	56	30	21	4	65	38165	1767272

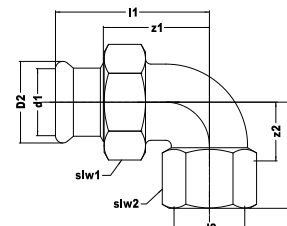
Var försiktig under pressningen så att pressbackarna inte kommer i kontakt med skruvnyckelns anliggningsytor!

6092G Vinkel 90°
(muff x utv. gga)



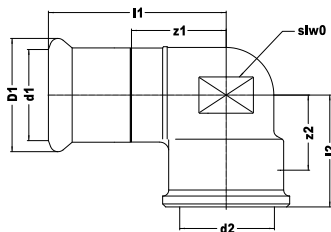
Dimension	l1	z1	z2	slw2	r	Artikelnr.	RSK-nr.
12 x R3/8	36	19	25	15	14	38371	1767177
12 x R1/2	40	23	26	26	14	38370	1767178
15 x R3/8	43	12	24	18	18	38339	1767179
15 x R1/2	38	19	34	18	18	38333	1767180
18 x R1/2	42	15	37	18	22	38340	1767181
18 x R3/4	47	18	31	25	22	38372	1767182
22 x R3/4	47	28	43	25	26	38334	1767183
28 x R1	58	36	53	33	34	38335	1767184
35 x R1 1/4	55	30	47	40	42	38336	1767185
42 x R1 1/2	62	32	51	50	50	38337	1767186
54 x R2	70	35	63	60	65	38338	1767187

6096G Vinkel 90°
(muff x inv. gga)



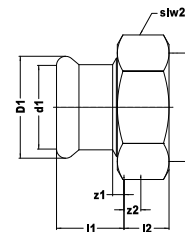
Dimension	l1	l2	z1	z2	slw1	slw2	Artikelnr.	RSK-nr.
12 x Rp1/2	49	32	32	15	30	27	38790	1767144
15 x Rp1/2	53	32	33	17	30	27	38791	1767145
18 x Rp1/2	55	32	35	17	30	27	38792	1767146
18 x Rp3/4	61	36	41	20	36	33	38793	1767147
22 x Rp3/4	66	40	45	21	36	40	38794	1767148
22 x Rp1	62	36	41	20	36	33	38795	1767149
28 x Rp1	68	44	45	25	46	40	38796	1767150
35 x Rp1 1/4	75	50	49	28	52	50	38797	1767151
42 x Rp1 1/2	85	53	55	32	58	56	38798	1767152
54 x Rp2	99	64	64	38	75	68	38799	1767153

6090G Vinkel 90°
(muff x inv. gga)



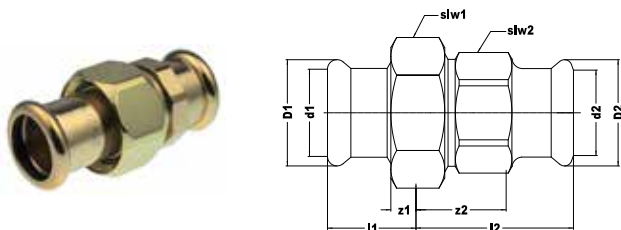
Dimension	l1	l2	z1	z2	slw0	Artikelnr.	RSK-nr.
12 x Rp3/8	39	18	22	10	15	38346	1767154
12 x Rp1/2	39	20	22	7	26	38345	1767155
15 x Rp3/8	43	18	23	11	18	38347	1767156
15 x Rp1/2	41	23	21	12	18	38351	1767157
15 x Rp3/4	36	29	16	13	31	38344	1759724
18 x Rp1/2	41	24	21	14	21	38348	1767158
18 x Rp3/4	52	25	32	12	21	38349	1767159
22 x Rp1/2	37	32	16	13	25	38350	1767160
22 x Rp3/4	45	27	24	11	25	38353	1767161
28 x Rp1	51	33	28	14	33	38354	1767162
35 x Rp1 1/4	55	45	29	21	46	38355	1767163
42 x Rp1 1/2	63	52	35	26	53	38356	1767164
54 x Rp2	74	60	42	33	65	38357	1767165

6359 Övergångskoppling med lekande mutter
(muff x inv. gga)



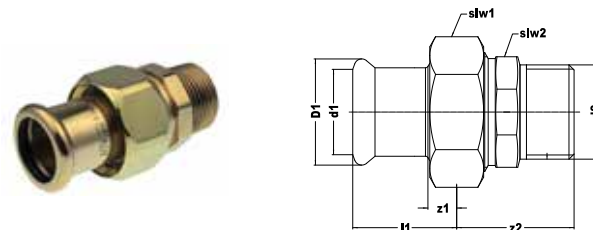
Dimension	l1	l2	z1	z2	slw2	Artikelnr.	RSK-nr.
15 x G3/4	30	11	10	3	30	38235	1767126
18 x G3/4	28	11	8	3	30	38237	1767127
22 x G1	36	13	15	3	36	38238	1767128
28 x G1 1/4	36	14	13	4	46	38239	1767129
35 x G1 1/2	36	15	10	4	52	38242	1767130
42 x G1 3/4	44	17	14	4	58	38243	1767131

6330 Övergångskoppling med plantätning
(2 × muff)



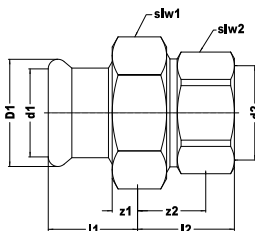
Dimension	l1	l2	z1	z2	slw1	slw2	Artikelnr.	RSK-nr.
15	27	33	7	13	30	25	38180	1767108
18	29	33	9	13	30	25	38179	1767109
22	31	37	10	16	36	32	38181	1767110
28	33	41	10	17	46	40	38182	1767111
35	33	38	7	14	52	46	38183	1767112
42	41	50	11	20	58	51	38184	1767113
54	48	51	13	16	75	65	38185	1767114

6331G Övergångskoppling med plantätning
(muff × utv. gga)



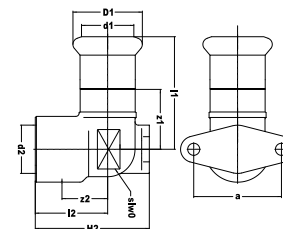
Dimension	l1	l2	z1	z2	slw1	slw2	Artikelnr.	RSK-nr.
12 × R3/8	21	27	3	21	24	19	38807	1767328
12 × R1/2	22	32	5	23	27	25	38808	1767329
15 × R1/2	30	32	10	24	30	25	38813	1767133
15 × R3/4	25	33	5	23	30	25	38809	1767134
18 × R1/2	28	31	8	23	30	25	38810	1767135
18 × R3/4	28	33	8	24	30	25	38811	1767136
22 × R1/2	29	37	8	28	36	32	38812	1767137
22 × R3/4	36	38	15	28	36	32	38814	1767138
22 × R1	29	39	8	28	36	32	38815	1767139
28 × R3/4	36	39	13	30	46	40	38820	1767399
28 × R1	36	40	13	30	46	40	38815	1767140
35 × R1 1/4	36	43	10	24	52	46	38817	1767141
42 × R1 1/2	44	44	14	31	58	51	38818	1767142
54 × R2	52	49	17	33	75	65	38819	1767143

6330G Övergångskoppling med plantätning
(muff x inv. gga)



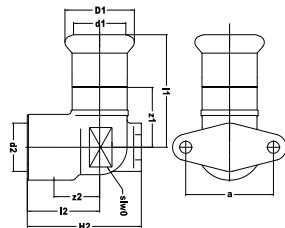
Dimension	l1	l2	z1	z2	slw1	slw2	Artikelnr.	RSK-nr.
12 x Rp1/2	22	20	5	5	27	26	38828	1767115
15 x Rp1/2	30	22	10	7	30	26	38833	1767116
15 x Rp3/4	25	30	5	13	30	32	38829	1767117
18 x Rp1/2	28	20	8	5	30	26	38830	1767118
18 x Rp3/4	28	29	8	13	30	32	38831	1767119
22 x Rp3/4	36	32	14	15	36	39	38834	1767120
22 x Rp1	29	36	8	17	36	32	38832	1767121
28 x Rp3/4	36	32	13	16	46	32	38827	1767517
28 x Rp1	36	29	13	10	46	43	38835	1767122
35 x Rp1 1/4	36	38	9	17	52	48	38836	1767123
42 x Rp1 1/2	44	39	14	18	58	54	38837	1767124
54 x Rp2	52	38	17	12	75	65	38838	1767125

6472G Ventilfäste
(muff x inv. gga)



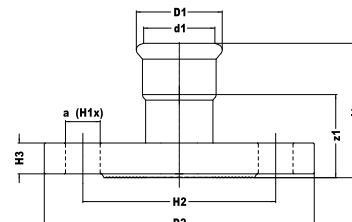
Dimension	l1	l2	z1	z2	H2	slw0	a	Artikelnr.	RSK-nr.
12 x Rp1/2	63	25	46	10	35	15	35	38397	1767302
15 x Rp3/8	42	38	22	16	49	22	40	38396	1760355
15 x Rp1/2	42	20	22	9	35	18	40	38400	1767303
18 x Rp1/2	43	24	23	9	39	25	40	38398	1767304
22 x Rp3/4	45	27	24	11	45	18	40	38401	1767305

6472L Ventilfäste, lång
(muff x inv. gga)



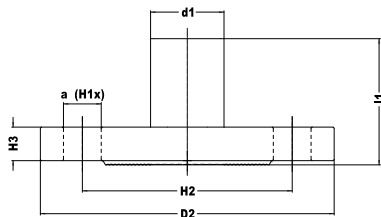
Dimension	l1	l2	z1	z2	H2	slw0	a	Artikelnr.	RSK-nr.
15 x Rp1/2	47	48	27	8	58	18	40	38399	1767306

7510 Flänskoppling PN10/16
(1 x muff)



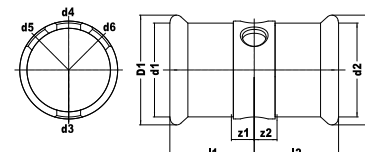
Dimension	l1	z1	H1	H2	H3	a	Artikelnr.	RSK-nr.
Ø66,7 DN65	103	53	4	145	20	18	38364	1760323
Ø76,1 DN65	103	53	8	160	20	18	38365	1767366
Ø88,9 DN80	113	51	8	160	20	18	38366	1767367
Ø108 DN100	126	59	8	180	20	18	38367	1767368

7520 Flänskoppling PN10/16
(1 × slätända)



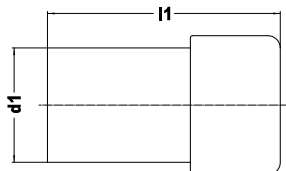
Dimension	l1	H1	H2	H3	a	Artikelnr.	RSK-nr.
Ø66,7 DN65	112	4	145	20	18	38359	1760324
Ø76,1 DN65	113	8	160	20	18	38360	1767369
Ø108 DN100	141	8	180	20	18	38362	1767371

6131G Multiportkoppling
(2 × muff)



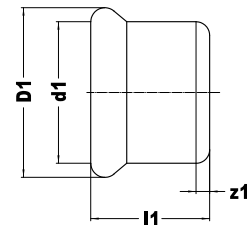
Dimension	l1/l2	z1/z2	d1	d2	d3	d4	d5	d6	Artikelnr.	RSK-nr.
66,7 × Rp1/2	65	15	67	67	1/2"	1/2"			38189	1760358
76,1 × Rp1/2	65	14	76	76	1/2"	1/2"			38188	1760359
88,9 × Rp3/4	80	18	89	89	3/4"	3/4"	3/4"		38192	1760360
108 × Rp3/4	85	18	108	108	3/4"	3/4"	3/4"	3/4"	38206	1760361

S302 Propp
(1 × slätända)



Dimension	l1	Artikelnr.	RSK-nr.
Ø 35	96	38686	1760300
Ø 42	108	38688	1760301
Ø 54	125	38690	1760302

7301 Huv
(1 × muff)



Dimension	l1	z1	Artikelnr.	RSK-nr.
12	17	2	38702	1767398
15	20	2	38695	1767090
18	20	2	38696	1767091
22	21	2	38607	1767092
28	23	2	38698	1767093
35	26	2	38699	1767094
42	30	2	38700	1767095
54	35	2	38701	1767096
66,7	50	2	38691	1760303
76,1	50	2	38692	1767097
88,9	64	2	38693	1767098
108	67	2	38694	1767099

7999 O-ring, standard
(svart, EPDM) för koppar



Dimension	ArtikeInr.	RSK-nr.
12	39116	1767339
15	39115	1767340
18	39117	1767341
22	39122	1767342
28	39128	1767343
35	39135	1767344
42	39142	1767345
54	39154	1767346
66,7	39230	1760363
76,1	39231	1454278
88,9	90712	1454279
108	39232	1454280

För alla installationer för tappvatten, behandlat vatten, hetvatten, cirkulationssystem, sprinklersystem etc.

Temperaturområde:
-35°C till +135°C (kortvarigt 150°C)

C1700 O-ring för särskilda tillämpningar
(grön, FPM) för koppar

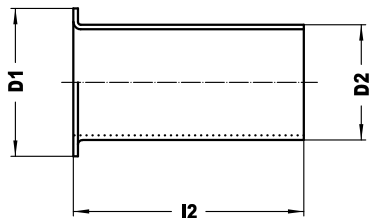


Dimension	ArtikeInr.	RSK-nr.
12	39098	1552029
15	39100	1552030
18	39099	1552031
22	39101	1552032
28	39102	1552033
35	39103	1552034
42	39104	1552035
54	39105	1552051
66,7	39230	1760363
76,1	6119377	1454275
88,9	6119388	1454276
108	6119399	1454277

Installationer för tryckluft, eldningsolja, vegetabilisk olja, bränslen, fetter och industritillämpningar, ozonbeständig (industriell modell). Ej lämpad för hetvatten.

Temperaturområde:
-20°C till +200°C (kortvarigt 230°C)

S1283 Stödhylsa



Dimension	l2	D1	D2	Artikelnr.	RSK-nr.
12 × 1,0	23	12	9,8	0883234	1866029
15 × 1,0	23	15	12,5	0883245	1866045
18 × 1,0	25	18	15,8	0883278	1866078
22 × 1,0	27	22	19,8	0883291	1866086
28 × 1,2	32	22	25,4	0883300	-

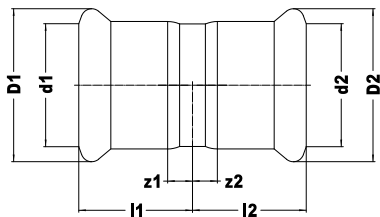


6.5 VSH XPress-SYSTEM I FÖRKROMAT KOPPAR

VSH XPress

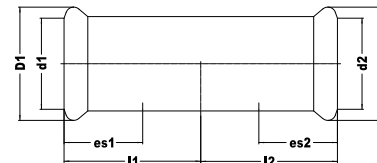


S1CP/7270CP

Muff
(2 x muff)

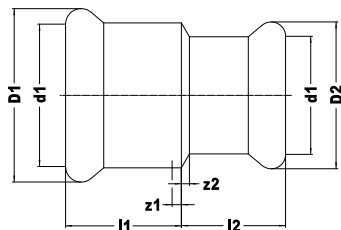
Dimension	l1/l2	z1/z2	Artikelnr.	RSK-nr.
12	21	4	38610	1767596
15	22	2	38611	1767597
22	23	2	38612	1767598

S1SCP/7270SCP

Skjutmuff
(2 x muff)

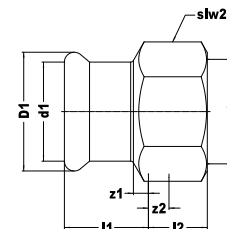
Dimension	l1/l2	z1/z2	es1/es2	Artikelnr.	RSK-nr.
15	40	20	20	38614	1767599

S1RCP/7240SCP

Reducering
(2 × muff)

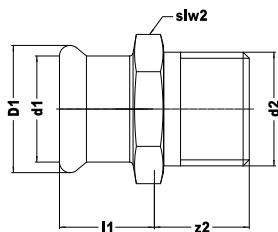
Dimension	l1	l2	z1	z2	Artikelnr.	RSK-nr.
15 × 12	23	22	3	5	38616	1769500
22 × 15	28	25	7	5	38617	1769501

S2CP/6270GCP

Övergångsmuff
(muff × inv. gga)

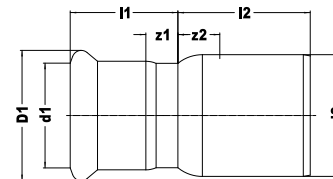
Dimension	l1	l2	z1	z2	slw2	Artikelnr.	RSK-nr.
12 × Rp3/8	17	14	0	6	20	38619	1769019
12 × Rp1/2	18	17	0	8	22	38620	1769026
15 × Rp3/8	20	14	2	6	20	38621	1769027
15 × Rp1/2	20	18	3	8	25	38622	1769028

S3CP/6243GCP

Övergångsnippel
(muff x utv. gga)

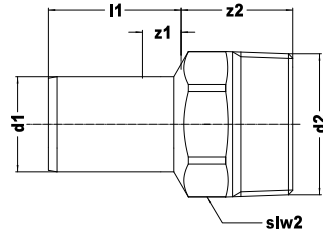
Dimension	l1	l2	z2	slw2	Artikelnr.	R5K-nr.
12 x R3/8	17	15	9	19	38627	1769029
12 x R1/2	17	19	11	19	38628	1769456
15 x R3/8	20	13	7	21	38629	1769457
15 x R1/2	20	17	8	21	38630	1769458

S6CP/7243CP

Reducering
(slätända x muff)

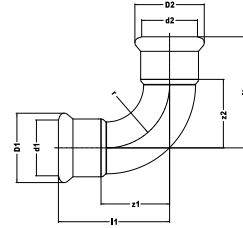
Dimension	l1	l2	z1	z2	Artikelnr.	R5K-nr.
Ø15 x 12	21	23	4	3	38636	1769502
Ø18 x 12	21	26	4	6	38637	1769503
Ø18 x 15	24	23	4	3	38638	1769511
Ø22 x 15	24	28	4	7	38639	1769539

S8CP/6280GCP

Övergångsmuff
(slätända x utv. gga)

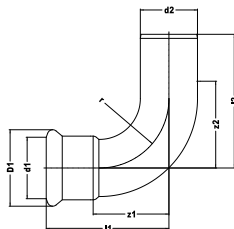
Dimension	l1	l2	z1	z2	slw2	Artikelnr.	RSK-nr.
15 x R1/2	30	21	10	12	19	38642	1769459

S12CP/7002ACP

90° böj
(2 x muff)

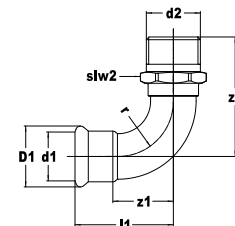
Dimension	l1/l2	z1/z2	r	Artikelnr.	RSK-nr.
12	31	14	14	38645	1767584
15	38	17	17	38646	1767585
22	47	26	26	38647	1767586

S12SCP/7001ACP

90° böj
(muff x slätända)

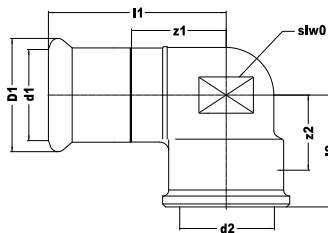
Dimension	l1	l2	z1	z2	r	Artikelnr.	RSK-nr.
12 × Ø12	31	45	14	28	14	38649	1767587
15 × Ø15	36	50	16	30	18	38650	1767588
22 × Ø22	47	58	27	38	26	38651	1767589

S13CP/6092GCP

Vinkel 90°
(muff x utv. gga)

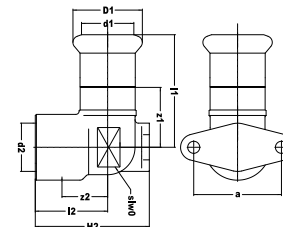
Dimension	l1	z1	z2	slw2	r	Artikelnr.	RSK-nr.
12 × R1/2	40	23	26	26	14	38654	1767590
15 × R1/2	38	19	34	18	18	38655	1767591

S14CP/6090GCP

Vinkel 90°
(muff x inv. gga)

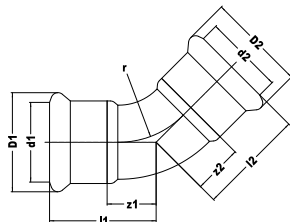
Dimension	l1	l2	z1	z2	slw0	Artikelnr.	RSK-nr.
12 × Rp3/8	39	18	22	10	15	38659	1768098
15 × Rp1/2	41	23	21	12	18	38660	1768099

S15CP/6472GCP

Ventilfäste
(muff x inv. gga)

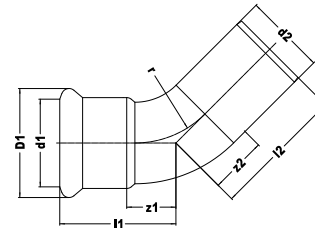
Dimension	l1	l2	z1	z2	H2	slw0	a	Artikelnr.	RSK-nr.
12 × Rp1/2	63	25	46	10	35	15	35	38665	1768002
15 × Rp1/2	42	20	22	9	35	18	40	38666	1768003

S21CP/7041CP

45° böj
(2 × muff)

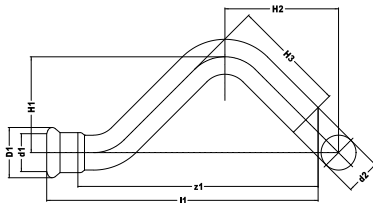
Dimension	l1/l2	z1/z2	r	Artikelnr.	RSK-nr.
12	23	6	14	38667	1767593
15	28	8	18	38668	1767592

S21SCP/7040CP

45° böj
(muff × slätända)

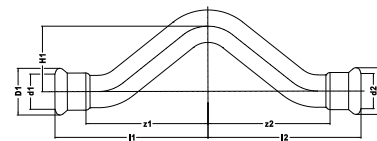
Dimension	l1	l2	z1	z2	r	Artikelnr.	RSK-nr.
12 × Ø12	23	32	6	15	14	38671	1767594
15 × Ø15	28	37	8	17	18	38672	1767595

S22CP/7086CP

S-rör
(muff x slätända)

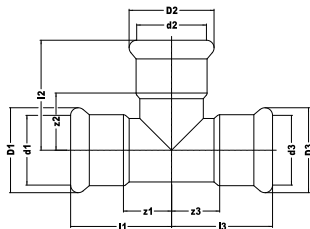
Dimension	l1	z1	H1	H2	H3	Artikelnr.	RSK-nr.
15 x Ø15	110	90	25	40	44	38675	1768041

S23CP/7085CP

Bygelrör
(2 x muff)

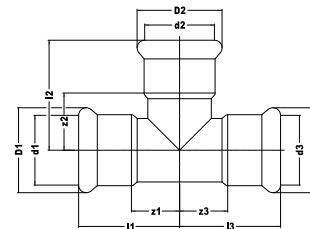
Dimension	l1/l2	z1/z2	H1	Artikelnr.	RSK-nr.
15	70	50	26	38677	1768042

S24CP/7130CP

T-rör
(3 × muff)

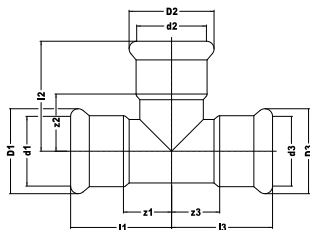
Dimension	l1/l3	l2	z1/z3	z2	Artikelnr.	RSK-nr.
12	28	28	11	11	38710	1769540
15	32	32	12	12	38711	1769541
22	37	37	16	16	38712	1769542

S25CP/7125CP

T-rör reducerat
(3 × muff)

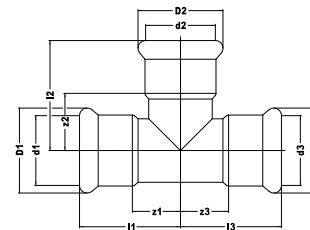
Dimension	l1/l3	l2	z1/z3	z2	Artikelnr.	RSK-nr.
15 × 12 × 15	32	32	12	15	38714	1769543
22 × 15 × 22	37	38	16	18	38715	1769544

S26CP/7126CP

T-rör reducerat
(3 × muff)

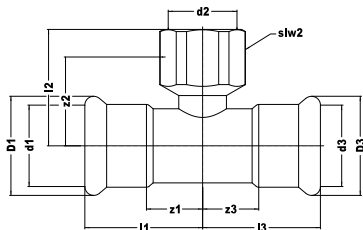
Dimension	l1/l2	l3	z1/z2	z3	Artikelnr.	RSK-nr.
15 × 15 × 12	32	36	12	19	38719	1769547

S27CP/7127CP

T-rör reducerat
(3 × muff)

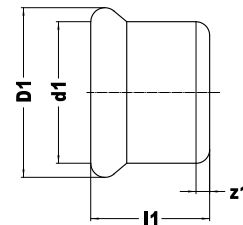
Dimension	l1	l2	l3	z1	z2	z3	Artikelnr.	RSK-nr.
15 × 12 × 12	32	32	32	12	15	15	38723	1769545

S30CP/6130GCP

T-rör med inv. gga
(muff × inv. gga × muff)

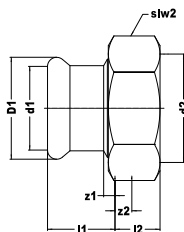
Dimension	l1/l3	l2	z1/z3	z2	slw2	Artikelnr.	RSK-nr.
15 × Rp1/2 × 15	34	25	14	13	26	38733	1769548

S61CP/7301CP

Huv
(1 × muff)

Dimension	l1	z1	Artikelnr.	RSK-nr.
15	20	2	38739	1768004

S68FFCP/6359CP

Övergångskoppling med lekande mutter
(muff x inv. gga)

Dimension	l1	l2	z1	z2	slw2	Artikelnr.	RSK-nr.
15 x G3/4	30	11	10	3	30	38742	1769499

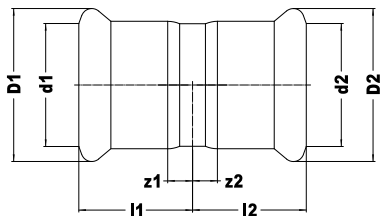


6.6 VSH XPress-SYSTEM I KOPPAR FÖR GAS

VSH XPress

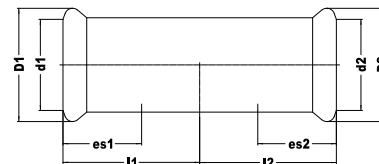


G7270 Muff
(2 x muff)



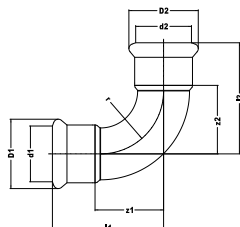
Dimension	l1/l2	z1/z2	Artikelnr.	RSK-nr.
15	22	2	39700	1759501
18	22	2	39699	1759502
22	23	2	39701	1759503
28	25	2	39702	1759504
35	28	2	39703	1759505
42	36	4	39704	1759506
54	42	5	39705	1759507

G7270S Skjutmuff
(2 x muff)



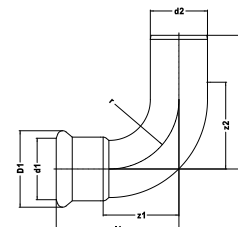
Dimension	l1/l2	z1/z2	es1/es2	Artikelnr.	RSK-nr.
15	40	20	20	39710	1759523
18	40	20	20	39709	1759524
22	42	21	21	39711	1759525
28	46	23	23	39712	1759526
35	50	25	25	39713	1759527
42	60	30	30	39714	1759528
54	71	35	36	39715	1759529

G7002A 90° böj
(2 x muff)



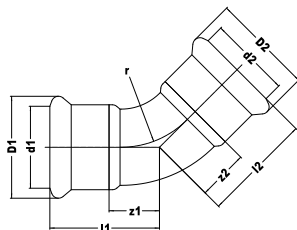
Dimension	l1/l2	z1/z2	r	Artikelnr.	RSK-nr.
15	38	17	14	39780	1759612
18	42	22	22	39779	1759613
22	47	26	26	39781	1759614
28	56	34	34	39782	1759615
35	68	42	42	39783	1759616
42	80	50	50	39784	1759617
54	100	65	65	39785	1759618

G7001A 90° böj
(muff x slätända)



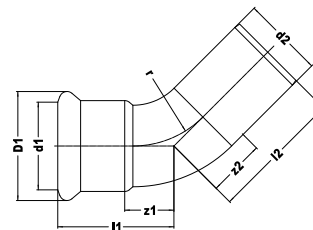
Dimension	l1	l2	z1	z2	r	Artikelnr.	RSK-nr.
15 x Ø15	36	50	16	30	18	39790	1759627
18 x Ø18	42	53	22	33	22	39789	1759628
22 x Ø22	47	58	27	38	26	39791	1759629
28 x Ø28	58	64	34	40	34	39792	1759630
35 x Ø35	69	82	44	57	42	39793	1759631
42 x Ø42	81	101	52	72	50	39794	1759632
54 x Ø54	100	120	66	86	65	39795	1759633

G7041 45° böj
(2 x muff)



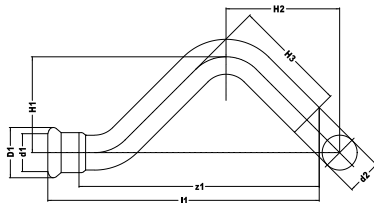
Dimension	l1/l2	z1/z2	r	Artikelnr.	RSK-nr.
15	28	8	18	39825	1759683
18	29	9	22	39823	1759684
22	31	12	26	39826	1759685
28	37	16	34	39827	1759686
35	44	18	42	39828	1759687
42	51	21	50	39829	1759688
54	62	27	65	39830	1759689

G7040 45° böj
(muff x slätända)



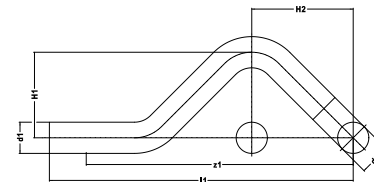
Dimension	l1	l2	z1	z2	r	Artikelnr.	RSK-nr.
15 x Ø15	28	37	8	17	18	39835	1759690
18 x Ø18	29	39	9	19	22	39833	1759691
22 x Ø22	32	44	11	23	26	39836	1759692
28 x Ø28	37	47	14	24	34	39837	1759693
35 x Ø35	43	58	17	32	42	39838	1759694
42 x Ø42	51	71	21	41	50	39839	1759695
54 x Ø54	62	82	27	47	65	39840	1759696

G7086 S-rör
(muff x slätända)



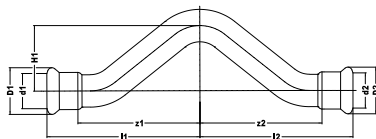
Dimension	l1	z1	H1	H2	H3	Artikelnr.	RSK-nr.
15 x Ø15	110	90	19	41	46	39841	1759677
18 x Ø18	120	100	18	45	49	39842	1759678
22 x Ø22	135	114	17	50	55	39843	1759679

G7087 S-rör
(2 x slätända)



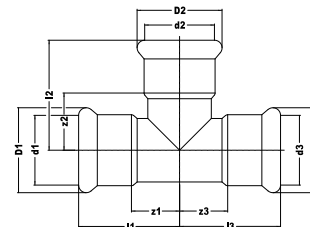
Dimension	l1	z1	H1	H2	Artikelnr.	RSK-nr.
Ø15	118	98	33	41	38438	1767374
Ø18	128	108	36	45	48434	1767375
Ø22	142	121	40	50	38439	1767376

G7085 Bygelrör
(2 × muff)



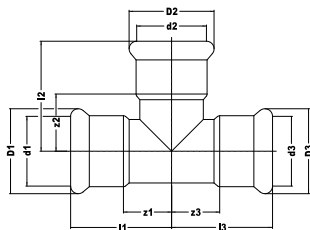
Dimension	l1/l2	z1/z2	H1	Artikelnr.	RSK-nr.
15	70	50	34	4804041	1769680
18	76	56	36	4804052	1769681
22	85	64	50	4804063	1769682

G7130 T-rör
(3 × muff)



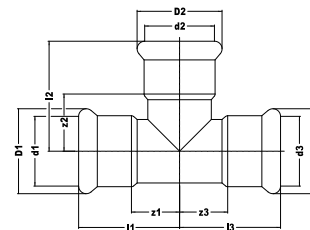
Dimension	l1/l2/l3	z1/z2/z3	Artikelnr.	RSK-nr.
15	32	12	39850	1759634
18	34	14	39847	1759635
22	37	16	39851	1759636
28	42	19	39852	1759637
35	50	24	39853	1759638
42	58	28	39854	1759639
54	69	34	39855	1759640

G7125 T-rör reducerat
(3 x muff)



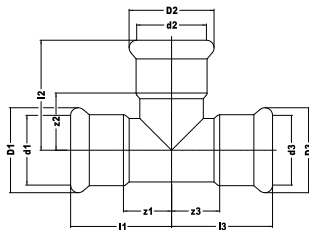
Dim. (d1 × d2 × d3)	l1/l3	l2	z1/z3	z2	Artikelnr.	RSK-nr.
18 × 15 × 18	34	35	14	15	39856	1759641
22 × 15 × 22	37	38	16	18	39860	1759643
22 × 18 × 22	37	38	16	18	39868	1759644
28 × 15 × 28	42	41	19	21	39861	1759646
28 × 18 × 28	42	41	19	21	39857	1759647
28 × 22 × 28	42	41	19	20	39862	1759648
35 × 22 × 35	45	45	19	24	39863	1759649
35 × 28 × 35	50	44	24	21	39864	1759650
42 × 22 × 42	50	48	20	27	39869	-
42 × 28 × 42	56	49	26	26	39865	1759718
42 × 35 × 42	56	50	26	24	39866	1759652
54 × 22 × 54	60	54	25	33	39871	-
54 × 42 × 54	69	64	34	34	39867	1759653

G7126 T-rör reducerat
(3 x muff)



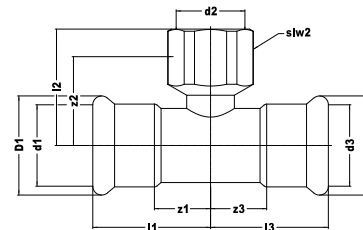
Dim. (d1 × d2 × d3)	l1/l2	l3	z1/z2	z3	Artikelnr.	RSK-nr.
22 × 22 × 15	37	46	16	26	39870	1759645

G7127 T-rör reducerat
(3 × muff)



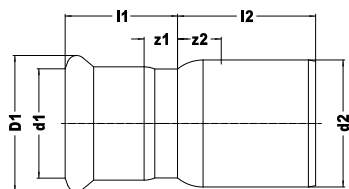
Dim. (d1 × d2 × d3)	l1	l2	l3	z1	z2	z3	Artikelnr.	RSK-nr.
22 × 15 × 15	37	44	43	16	18	23	39875	1759642

G6130G T-rör med inv. gga
(muff × inv. gga × muff)



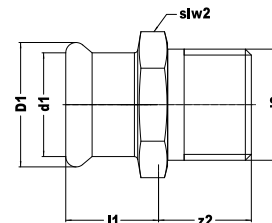
Dimension	l1/l3	l2	z1/z3	z2	slw2	Artikelnr.	RSK-nr.
15 × Rp1/2 × 15	32	59	48	12	22	39890	1759654
18 × Rp1/2 × 18	42	24	8	22	22	39891	1759655
22 × Rp1/2 × 22	34	65	50	13	22	39892	1759656
22 × Rp3/4 × 22	37	67	51	16	30	39893	1759657
28 × Rp1/2 × 28	44	29	14	21	22	39894	1759658
28 × Rp3/4 × 28	41	34	14	18	30	39895	1759659
35 × Rp1/2 × 35	50	34	19	24	22	39896	1759660
35 × Rp1 × 35	50	34	14	24	46	39897	1759661
42 × Rp1/2 × 42	57	38	23	27	48	39898	1759662
54 × Rp1/2 × 54	69	44	29	34	65	39899	1759664

G7243 Reducering
(slätända x muff)



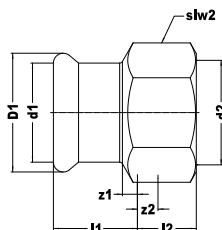
Dim. (d2 × d1)	l1	l2	z1	z2	Artikelnr.	RSK-nr.
Ø18 × 15	24	23	4	3	39761	1759540
Ø22 × 15	24	28	4	7	39750	1759541
Ø22 × 18	24	26	4	5	39762	1759542
Ø28 × 15	25	37	4	14	39751	1759543
Ø28 × 18	24	26	4	5	39763	1759544
Ø28 × 22	25	30	4	7	39752	1759545
Ø35 × 22	29	39	9	13	39753	1759546
Ø35 × 28	28	35	5	9	39754	1759547
Ø42 × 22	25	49	4	19	39755	1759548
Ø42 × 28	27	44	4	14	39756	1759549
Ø42 × 35	35	38	8	8	39757	1759550
Ø54 × 28	27	59	4	24	39760	1759717
Ø54 × 35	35	53	9	18	39758	1759551
Ø54 × 42	40	47	9	12	39759	1759552

G6243G Övergångsnippel
(muff x utv. gga)



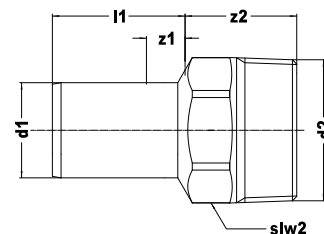
Dimension	l1	z1	z2	slw2	Artikelnr.	RSK-nr.
15 × R1/2	20	4	17	21	39730	1759508
15 × R3/4	20	4	19	25	39731	1759509
18 × R1/2	20	4	17	25	39728	1759510
18 × R3/4	20	4	19	25	39729	1759511
22 × R1/2	21	5	17	30	39732	1759512
22 × R3/4	21	5	19	30	39733	1759513
22 × R1	21	5	21	32	39734	1759514
28 × R3/4	23	5	20	36	39737	1759515
28 × R1	23	5	10	36	39735	1759516
28 × R1 1/4	23	4	13	40	39736	1759517
35 × R1	26	5	22	41	39738	1759518
35 × R1 1/4	26	5	27	41	39739	1759519
42 × R1 1/4	30	2	28	51	39741	1759520
42 × R1 1/2	30	2	28	51	39740	1759521
54 × R2	35	7	28	57	39742	1759522

G6270G Övergångsmuff
(muff × inv. gga)



Dimension	l1	l2	z1	z2	slw2	Artikelnr.	R5K-nr.
15 × Rp1/2	19	18	2	8	25	39720	1759530
15 × Rp3/4	17	19	1	8	30	39721	1759531
18 × Rp1/2	19	18	1	8	25	39716	1759532
18 × Rp3/4	20	19	2	9	30	39717	1759533
22 × Rp1/2	19	17	1	7	30	39722	1759534
22 × Rp3/4	20	19	1	9	30	39723	1759535
28 × Rp1	23	22	1	10	37	39724	1759536
35 × Rp1 1/4	25	25	1	11	46	39725	1759537
42 × Rp1 1/2	27	25	1	11	48	39726	1759538
54 × Rp2	32	25	1	11	48	39727	1759539

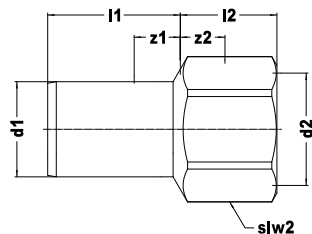
6280G Övergångsnippel
(slätända × utv. gga)



Dimension	l1	z1	z2	slw2	Artikelnr.	R5K-nr.
15 × R1/2	30	10	21	19	38170	1767100
18 × R1/2	30	10	20	19	38173	1767101
18 × R3/4	30	10	23	25	38174	1767102
22 × R1/2	30	9	21	19	38175	1767103
22 × R3/4	30	9	23	25	38171	1767104
28 × R1	32	9	26	32	38172	1767105
35 × R1 1/4	35	9	29	36	38176	1767106
42 × R1 1/2	51	21	29	46	38177	1767107

Var försiktig under pressningen så att pressbackarna inte kommer i kontakt med skruvnyckels anliggningsstor!

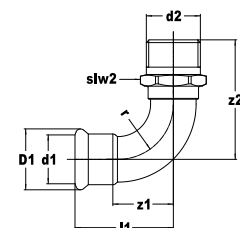
6246G Övergångsmuff
(slätända x inv. gga)



Dimension	l1	l2	z1	z2	slw2	Artikelnr.	RSK-nr.
15 × Rp1/2	30	18	10	3	22	38160	1767262
18 × Rp1/2	30	17	10	3	22	38157	1767263
18 × Rp3/4	30	20	10	3	30	38158	1767264
22 × Rp1/2	30	17	9	2	22	38159	1767265
22 × Rp3/4	30	19	9	3	30	38161	1767266
28 × Rp3/4	32	18	9	2	30	38166	1767267
28 × Rp1	32	22	9	3	37	38162	1767268
35 × Rp1	35	21	9	2	37	38167	1767269
35 × Rp1 1/4	35	25	9	4	46	38163	1767270
42 × Rp1 1/2	51	25	21	4	48	38164	1767271
54 × Rp2	56	30	21	4	65	38165	1767272

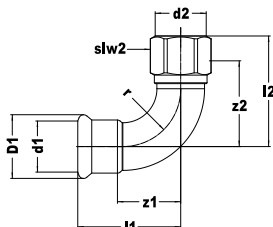
Var försiktig under pressningen så att pressbackarna inte kommer i kontakt med skruvnyckelns anliggningsytor!

G6092G Vinkel 90°
(muff x utv. gga)



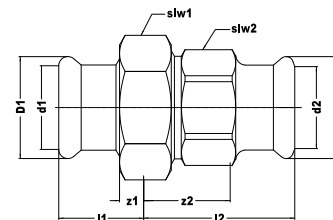
Dimension	l1	z1	z2	slw2	r	Artikelnr.	RSK-nr.
15 × R1/2	37	18	67	19	18	39800	1759619
18 × R1/2	64	44	34	19	22	39806	1759620
18 × R3/4	60	40	37	25	22	39807	1759621
22 × R3/4	48	27	79	30	26	39801	1759622
28 × R1	57	35	88	36	34	39802	1759623
35 × R1 1/4	80	55	59	41	42	39803	1759624
42 × R1 1/2	104	74	57	51	50	39804	1759625
54 × R2	104	69	80	57	65	39805	1759626

G6090G Vinkel 90°
(muff x inv. gga)



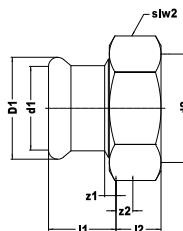
Dimension	l1	l2	z1	z2	slw2	r	Artikelnr.	RSK-nr.
15 × Rp1/2	55	26	35	12	22	18	39810	1759600
15 × Rp3/4	63	29	43	12	30	18	39811	1759601
18 × Rp1/2	55	25	35	9	22	22	39808	1759602
18 × Rp3/4	61	29	41	11	30	22	39809	1759603
22 × Rp1/2	56	25	35	14	22	26	39813	1759604
22 × Rp3/4	62	29	41	13	30	26	39814	1759605
22 × Rp1	66	38	45	21	37	26	39812	1759606
28 × Rp1	73	37	50	18	37	34	39815	1759607
35 × Rp1 1/4	83	43	57	19	46	42	39816	1759608
42 × Rp1 1/2	88	46	60	27	48	50	39817	1759609
54 × Rp2	104	55	72	33	65	65	39818	1759610

G6340 Övergångskoppling med plantätning
(2 × muff)



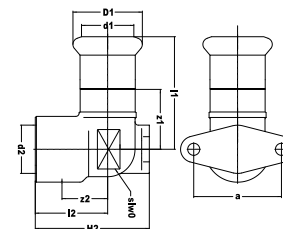
Dimension	l1	l2	z1	z2	slw1	slw2	Artikelnr.	RSK-nr.
15	25	36	5	16	34	28	39770	1759568
18	29	38	9	18	41	36	39906	1759569
22	29	38	8	17	41	36	39771	1759570
28	34	41	11	18	48	41	39772	1759571
35	36	46	10	20	58	50	39773	1759572
42	46	51	16	21	65	55	39774	1759715
54	46	58	11	23	80	70	39775	1759716

G6360 Övergångskoppling med lekande mutter
(muff × inv. gga)



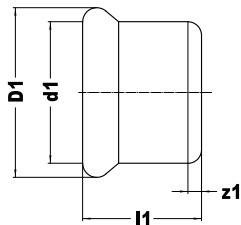
Dimension	l1	l2	z1	z2	slw2	Artikelnr.	RSK-nr.
15 × G7/8	20	14	4	9	34	39910	1759586
22 × G1 1/8	21	17	5	13	41	39911	1759587
28 × G1 3/8	23	22	4	18	48	39912	1759588

G6471G Ventilfäste
(muff × inv. gga)



Dimension	l1	l2	z1	z2	H2	slw0	a	Artikelnr.	RSK-nr.
15 × Rp1/2	51	22	31	11	38	-	40	39820	1759712
18 × Rp1/2	51	22	31	10	38	-	40	39819	1759713
22 × Rp3/4	61	31	40	15	48	-	40	39821	1759714

G7301 Huv
(1 x muff)



Dimension	l1	z1	Artikelnr.	RSK-nr.
15	20	2	39880	1759553
18	20	2	39878	1759554
22	21	2	39881	1759555
28	23	2	39882	1759556
35	26	2	39883	1759557
42	30	2	39884	1759558
54	35	2	39885	1759559

G7999 O-ring, standard
(gas, NBR) för koppar för GAS



Dimension	Artikelnr.	RSK-nr.
15	27020	1759700
18	27027	1759701
22	27021	1759702
28	27022	1759703
35	27023	1759704
42	27024	1759705
54	27025	1759706

RSK-nr.	Sida	RSK-nr.	Sida	RSK-nr.	Sida	RSK-nr.	Sida	RSK-nr.	Sida	RSK-nr.	Sida	RSK-nr.	Sida	RSK-nr.	Sida
1439109	177	1441301	185	1451008	176	1454006	131	1454036	136	1454066	160	1454096	139	1454138	145
1439110	177	1441302	185	1451008	176	1454007	132	1454037	136	1454067	160	1454097	139	1454139	145
1439111	177	1441303	185	1451009	130	1454008	132	1454038	136	1454068	160	1454098	139	1454140	145
1440197	179	1441304	186	1451009	176	1454009	132	1454039	136	1454069	160	1454099	138	1454141	145
1440198	179	1441305	186	1451009	176	1454010	132	1454040	136	1454070	154	1454100	138	1454142	145
1440199	179	1441306	186	1451010	130	1454011	132	1454041	136	1454071	154	1454101	138	1454143	145
1440200	180	1441307	186	1451010	176	1454012	132	1454042	147	1454072	154	1454102	138	1454144	145
1440201	180	1441308	186	1451010	176	1454013	132	1454043	147	1454073	154	1454115	150	1454145	145
1440202	180	1441309	186	1451011	130	1454014	133	1454044	147	1454074	154	1454116	150	1454146	157
1440203	182	1442375	187	1451011	176	1454015	133	1454045	147	1454075	154	1454117	150	1454147	157
1440204	182	1442376	187	1451011	176	1454016	133	1454046	147	1454076	154	1454118	150	1454148	157
1440205	182	1442377	187	1451012	130	1454017	133	1454047	147	1454077	161	1454119	150	1454149	151
1440206	181	1442378	187	1451012	176	1454018	133	1454048	147	1454078	161	1454120	150	1454150	151
1440207	181	1442379	187	1451012	176	1454019	133	1454049	147	1454079	161	1454121	150	1454151	151
1440208	181	1442380	187	1451013	130	1454020	133	1454050	147	1454080	161	1454122	150	1454152	151
1441286	183	1442381	187	1451013	176	1454021	135	1454051	147	1454081	161	1454123	150	1454153	151
1441287	183	1445642	188	1451013	176	1454022	135	1454052	147	1454082	161	1454124	150	1454154	151
1441288	183	1445643	188	1451014	130	1454023	135	1454053	147	1454083	161	1454125	150	1454155	151
1441289	185	1445644	195	1451014	176	1454024	135	1454054	147	1454084	137	1454126	150	1454156	150
1441290	185	1445645	195	1451015	130	1454025	135	1454055	148	1454085	137	1454127	150	1454157	152
1441291	185	1445646	195	1451015	176	1454026	135	1454056	148	1454086	137	1454128	150	1454158	152
1441292	185	1447821	196	1451016	130	1454027	135	1454057	148	1454087	137	1454129	150	1454159	152
1441293	185	1447822	196	1451016	176	1454028	134	1454058	148	1454088	137	1454130	150	1454160	152
1441294	185	1447823	196	1451099	130	1454029	134	1454059	141	1454089	137	1454131	150	1454161	152
1441295	185	1447824	196	1454000	131	1454030	134	1454060	141	1454090	137	1454132	145	1454162	142
1441296	185	1447825	196	1454001	131	1454031	134	1454061	141	1454091	140	1454133	145	1454163	142
1441297	185	1451007	130	1454002	131	1454032	134	1454062	141	1454092	140	1454134	145	1454164	142
1441298	185	1451007	176	1454003	131	1454033	134	1454063	160	1454093	140	1454135	145	1454165	142
1441299	185	1451007	176	1454004	131	1454034	134	1454064	160	1454094	140	1454136	145	1454166	142
1441300	185	1451008	130	1454005	131	1454035	136	1454065	160	1454095	139	1454137	145	1454167	142

RSK-nr.	Sida	RSK-nr.	Sida	RSK-nr.	Sida	RSK-nr.	Sida	RSK-nr.	Sida	RSK-nr.	Sida	RSK-nr.	Sida	RSK-nr.	Sida
1454168	142	1454198	149	1454240	144	1454278	168	1454303	155	1454333	136	1454604	177	1454619	179
1454169	143	1454199	149	1454241	144	1454278	242	1454304	155	1454334	136	1454604	177	1454619	179
1454170	143	1454200	149	1454242	146	1454278	286	1454305	155	1454335	136	1454605	177	1454620	179
1454171	143	1454201	149	1454243	146	1454279	168	1454306	155	1454336	171	1454605	177	1454620	179
1454172	143	1454202	149	1454244	146	1454279	242	1454307	155	1454336	245	1454606	177	1454621	180
1454173	143	1454203	131	1454245	146	1454279	286	1454308	155	1454337	171	1454606	177	1454621	180
1454174	143	1454204	131	1454246	146	1454280	168	1454309	155	1454337	245	1454607	178	1454622	180
1454175	143	1454205	131	1454247	146	1454280	242	1454310	155	1454338	171	1454607	178	1454622	180
1454176	143	1454206	132	1454248	148	1454280	286	1454311	155	1454338	245	1454608	178	1454623	180
1454177	143	1454207	132	1454249	148	1454281	147	1454312	149	1454339	171	1454608	178	1454623	180
1454178	143	1454208	132	1454250	148	1454282	147	1454313	149	1454339	245	1454609	178	1454624	180
1454179	143	1454221	142	1454251	148	1454283	148	1454314	162	1454340	171	1454609	178	1454624	180
1454180	143	1454222	142	1454252	148	1454284	148	1454315	162	1454340	245	1454610	178	1454625	180
1454181	143	1454223	142	1454253	148	1454285	158	1454316	162	1454341	171	1454610	178	1454625	180
1454182	143	1454224	144	1454254	148	1454286	158	1454317	162	1454341	245	1454611	178	1454626	180
1454183	143	1454225	144	1454255	161	1454287	158	1454318	162	1454342	171	1454611	178	1454626	180
1454184	143	1454226	144	1454256	161	1454288	153	1454319	162	1454342	245	1454612	178	1454627	180
1454185	143	1454227	144	1454257	161	1454289	159	1454320	162	1454377	242	1454612	178	1454627	180
1454186	149	1454228	144	1454258	160	1454291	156	1454321	162	1454378	246	1454613	178	1454628	181
1454187	149	1454229	144	1454259	160	1454292	156	1454322	162	1454379	131	1454613	178	1454628	181
1454188	149	1454230	144	1454260	160	1454293	156	1454323	162	1454380	133	1454614	179	1454629	181
1454189	149	1454231	144	1454275	172	1454294	156	1454324	133	1454599	134	1454614	179	1454629	181
1454190	149	1454232	144	1454275	246	1454295	156	1454325	133	1454600	177	1454615	179	1454630	181
1454191	149	1454233	144	1454275	287	1454296	156	1454326	133	1454600	177	1454615	179	1454630	181
1454192	149	1454234	144	1454276	172	1454297	156	1454327	134	1454601	177	1454616	179	1454631	181
1454193	149	1454235	144	1454276	246	1454298	156	1454328	134	1454601	177	1454616	179	1454631	181
1454194	149	1454236	144	1454276	287	1454299	156	1454329	134	1454602	177	1454617	179	1454632	181
1454195	149	1454237	144	1454277	172	1454300	156	1454330	135	1454602	177	1454617	179	1454632	181
1454196	149	1454238	144	1454277	246	1454301	155	1454331	135	1454603	177	1454618	179	1454633	181
1454197	149	1454239	144	1454277	287	1454302	155	1454332	135	1454603	177	1454618	179	1454633	181

RSK-nr.	Sida	RSK-nr.	Sida	RSK-nr.	Sida	RSK-nr.	Sida	RSK-nr.	Sida	RSK-nr.	Sida	RSK-nr.	Sida	RSK-nr.	Sida
1454634	181	1454649	191	1454664	184	1454679	186	1454694	187	1454709	188	1454724	189	1454739	193
1454634	181	1454649	191	1454664	184	1454679	186	1454694	187	1454709	188	1454724	189	1454739	193
1454635	182	1454650	191	1454665	184	1454680	186	1454695	187	1454710	188	1454725	189	1454740	193
1454635	182	1454650	191	1454665	184	1454680	186	1454695	187	1454710	188	1454725	189	1454740	193
1454636	182	1454651	191	1454666	184	1454681	186	1454696	187	1454711	188	1454726	189	1454741	197
1454636	182	1454651	191	1454666	184	1454681	186	1454696	187	1454711	188	1454726	189	1454741	197
1454637	182	1454652	183	1454667	184	1454682	186	1454697	187	1454712	188	1454727	189	1454742	197
1454637	182	1454652	183	1454667	184	1454682	186	1454697	187	1454712	188	1454727	189	1454742	197
1454638	182	1454653	183	1454668	184	1454683	186	1454698	187	1454713	188	1454728	189	1454743	197
1454638	182	1454653	183	1454668	184	1454683	186	1454698	187	1454713	188	1454728	189	1454743	197
1454639	182	1454654	183	1454669	184	1454684	186	1454699	187	1454714	188	1454729	189	1454744	197
1454639	182	1454654	183	1454669	184	1454684	186	1454699	187	1454714	188	1454729	189	1454744	197
1454640	182	1454655	183	1454670	184	1454685	186	1454700	187	1454715	188	1454730	195	1454745	197
1454640	182	1454655	183	1454670	184	1454685	186	1454700	187	1454715	188	1454730	195	1454745	197
1454641	182	1454656	183	1454671	184	1454686	186	1454701	187	1454716	188	1454731	195	1454746	197
1454641	182	1454656	183	1454671	184	1454686	186	1454701	187	1454716	188	1454731	195	1454746	197
1454642	190	1454657	183	1454672	184	1454687	186	1454702	194	1454717	188	1454732	195	1454747	197
1454642	190	1454657	183	1454672	184	1454687	186	1454702	194	1454717	188	1454732	195	1454747	197
1454643	190	1454658	183	1454673	184	1454688	186	1454703	194	1454718	188	1454733	195	1455441	152
1454643	190	1454658	183	1454673	184	1454688	186	1454703	194	1454718	188	1454733	195	1455442	152
1454644	190	1454659	184	1454674	184	1454689	187	1454704	194	1454719	188	1454734	195	1455443	152
1454644	190	1454659	184	1454674	184	1454689	187	1454704	194	1454719	188	1454734	195	1455444	152
1454645	190	1454660	184	1454675	184	1454690	187	1454705	194	1454720	189	1454735	192	1455445	152
1454645	190	1454660	184	1454675	184	1454690	187	1454705	194	1454720	189	1454735	192	1455446	152
1454646	190	1454661	184	1454676	186	1454691	187	1454706	194	1454721	189	1454736	192	1455459	164
1454646	190	1454661	184	1454676	186	1454691	187	1454706	194	1454721	189	1454736	192	1455460	164
1454647	191	1454662	184	1454677	186	1454692	187	1454707	194	1454722	189	1454737	192	1455461	164
1454647	191	1454662	184	1454677	186	1454692	187	1454707	194	1454722	189	1454737	192	1455462	164
1454648	191	1454663	184	1454678	186	1454693	187	1454708	194	1454723	189	1454738	193	1455463	163
1454648	191	1454663	184	1454678	186	1454693	187	1454708	194	1454723	189	1454738	193	1455464	163

RSK-nr.	Sida	RSK-nr.	Sida	RSK-nr.	Sida	RSK-nr.	Sida
1455465	163	1455914	150	1550782	200	1551612	207
1455466	163	1455941	169	1550783	200	1551613	207
1455467	163	1455941	243	1550784	200	1551614	207
1455468	163	1455942	169	1550785	200	1551615	207
1455469	163	1455942	243	1550786	200	1551616	207
1455470	145	1455943	169	1550787	200	1551617	207
1455471	145	1455943	243	1550788	200	1551618	207
1455472	145	1455944	169	1550789	200	1551619	207
1455473	145	1455944	243	1550790	200	1551620	203
1455474	165	1455958	169	1550791	201	1551621	203
1455475	165	1455958	243	1550792	201	1551622	203
1455476	165	1455959	169	1550793	201	1551623	203
1455477	165	1455959	243	1550794	201	1551624	203
1455478	165	1456781	170	1550795	201	1551625	203
1455479	165	1456781	244	1550796	201	1551643	206
1455480	165	1456782	170	1550797	201	1551644	206
1455481	166	1456782	244	1550798	200	1551645	206
1455482	166	1456783	170	1550815	202	1551646	206
1455483	166	1456783	244	1550816	202	1551647	206
1455484	163	1456784	170	1550817	202	1551648	206
1455498	173	1456784	244	1550818	202	1551649	206
1455499	173	1456785	170	1550819	202	1551650	206
1455660	173	1456785	244	1551600	220	1551651	208
1455661	173	1456786	170	1551605	209	1551652	208
1455662	173	1456786	244	1551606	209	1551653	208
1455663	173	1550777	224	1551607	209	1551654	208
1455664	173	1550778	224	1551608	209	1551655	208
1455740	147	1550779	224	1551609	209	1551656	208
1455898	142	1550780	200	1551610	209	1551657	208
1455899	149	1550781	200	1551611	209	1551658	219

RSK-nr.	Sida	RSK-nr.	Sida	RSK-nr.	Sida	RSK-nr.	Sida
1551660	219	1551709	213	1551754	204	1551825	225
1551661	219	1551710	213	1551755	204	1551826	225
1551663	219	1551711	213	1551765	211	1551827	203
1551664	219	1551712	213	1551782	217	1551828	203
1551666	219	1551713	213	1551784	217	1551838	214
1551669	219	1551716	213	1551785	217	1551839	214
1551670	219	1551717	213	1551787	217	1551840	214
1551671	219	1551719	213	1551788	217	1551841	214
1551672	219	1551720	213	1551789	217	1551842	214
1551674	220	1551721	213	1551791	217	1551844	234
1551675	220	1551722	213	1551792	217	1551845	234
1551676	220	1551726	213	1551793	217	1551846	234
1551678	220	1551727	213	1551795	217	1551848	234
1551681	220	1551728	213	1551796	217	1551929	217
1551682	223	1551729	213	1551798	217	1551930	217
1551683	223	1551730	214	1551799	217	1551931	217
1551684	223	1551731	214	1551809	233	1551932	217
1551685	223	1551733	216	1551810	233	1551933	217
1551687	223	1551734	216	1551811	233	1551977	203
1551698	212	1551735	216	1551812	233	1551978	203
1551699	212	1551737	216	1551813	233	1551979	203
1551700	212	1551738	216	1551814	233	1551980	204
1551701	212	1551739	216	1551815	233	1551981	204
1551702	212	1551740	216	1551816	225	1551982	204
1551703	212	1551748	204	1551817	225	1551995	212
1551704	212	1551749	204	1551819	225	1551996	212
1551705	212	1551750	204	1551820	225	1551997	212
1551706	213	1551751	204	1551822	225	1551998	214
1551707	213	1551752	204	1551823	225	1551999	214
1551708	213	1551753	204	1551824	225	1552000	214

RSK-nr.	Sida	RSK-nr.	Sida	RSK-nr.	Sida	RSK-nr.	Sida	RSK-nr.	Sida	RSK-nr.	Sida	RSK-nr.	Sida	RSK-nr.	Sida
1552001	216	1552035	287	1552093	205	1552141	167	1552197	236	1552631	226	1552716	214	1554374	218
1552002	216	1552051	287	1552094	205	1552141	241	1552198	236	1552632	226	1552717	214	1554375	218
1552003	216	1552060	216	1552095	205	1552142	167	1552262	220	1552633	226	1552718	240	1554376	218
1552004	218	1552061	216	1552096	205	1552142	241	1552263	219	1552634	216	1552719	240	1554377	218
1552005	218	1552062	216	1552097	220	1552143	167	1552264	216	1552635	216	1552720	240	1554378	218
1552006	218	1552063	216	1552098	232	1552143	241	1552265	221	1552636	216	1552721	240	1554379	218
1552007	218	1552064	234	1552099	232	1552144	167	1552266	226	1552692	228	1552722	240	1554380	218
1552008	218	1552065	234	1552100	232	1552144	241	1552267	226	1552693	228	1552732	239	1554381	237
1552009	218	1552066	234	1552109	220	1552145	220	1552268	226	1552694	228	1552733	239	1554382	237
1552013	231	1552072	221	1552123	219	1552146	219	1552269	226	1552695	228	1552734	239	1554383	237
1552014	231	1552073	221	1552124	219	1552147	219	1552270	230	1552696	228	1552735	239	1554384	219
1552015	231	1552074	221	1552125	206	1552148	217	1552271	230	1552697	228	1552736	239	1554385	219
1552017	211	1552075	221	1552126	206	1552149	216	1552272	226	1552698	228	1552737	239	1554386	220
1552018	211	1552076	221	1552127	206	1552168	235	1552273	226	1552699	220	1552738	237	1554387	220
1552019	211	1552077	221	1552128	207	1552169	235	1552274	226	1552700	202	1552739	237	1554388	231
1552020	211	1552078	229	1552129	207	1552170	235	1552275	226	1552701	202	1552740	237	1554389	233
1552021	210	1552079	229	1552130	207	1552171	235	1552276	215	1552702	202	1554360	206	1554617	231
1552022	210	1552080	229	1552131	208	1552172	235	1552277	215	1552703	214	1554361	207	1554618	231
1552023	210	1552081	227	1552132	208	1552173	235	1552278	216	1552704	214	1554362	208	1554619	231
1552024	210	1552082	227	1552133	208	1552174	235	1552279	233	1552705	214	1554363	209	1554620	232
1552025	210	1552083	227	1552134	209	1552175	235	1552280	233	1552706	214	1554364	212	1554621	227
1552026	210	1552084	227	1552135	209	1552176	235	1552281	233	1552707	214	1554365	214	1554622	222
1552027	210	1552085	227	1552136	209	1552177	236	1552292	237	1552708	214	1554366	214	1554623	222
1552028	210	1552086	227	1552137	241	1552178	236	1552293	237	1552709	214	1554367	214	1554624	240
1552029	287	1552087	205	1552138	167	1552179	236	1552294	237	1552710	214	1554368	214	1554625	240
1552030	287	1552088	205	1552138	241	1552180	236	1552298	237	1552711	214	1554369	214	1554626	220
1552031	287	1552089	205	1552139	167	1552181	236	1552616	238	1552712	214	1554370	214	1554627	220
1552032	287	1552090	205	1552139	241	1552182	236	1552617	238	1552713	214	1554371	216	1554628	237
1552033	287	1552091	205	1552140	167	1552183	236	1552618	238	1552714	214	1554372	203	1560007	220
1552034	287	1552092	205	1552140	241	1552196	235	1552619	238	1552715	214	1554373	204	1560008	216

RSK-nr.	Sida	RSK-nr.	Sida	RSK-nr.	Sida	RSK-nr.	Sida	RSK-nr.	Sida	RSK-nr.	Sida	RSK-nr.	Sida	RSK-nr.	Sida
1759501	314	1759531	330	1759569	335	1759624	333	1759655	327	1759704	339	1759740	346	1759770	343
1759502	314	1759532	330	1759570	335	1759625	333	1759656	327	1759705	339	1759741	346	1759771	343
1759503	314	1759533	330	1759571	335	1759626	333	1759657	327	1759706	339	1759742	346	1759772	343
1759504	314	1759534	330	1759572	335	1759627	317	1759658	327	1759712	337	1759743	347	1759773	343
1759505	314	1759535	330	1759586	336	1759628	317	1759659	327	1759713	337	1759744	347	1759774	249
1759506	314	1759536	330	1759587	336	1759629	317	1759660	327	1759714	337	1759745	347	1759775	353
1759507	314	1759537	330	1759588	336	1759630	317	1759661	327	1759715	335	1759746	347	1759776	353
1759508	329	1759538	330	1759600	334	1759631	317	1759662	327	1759716	335	1759747	347	1759777	353
1759509	329	1759539	330	1759601	334	1759632	317	1759664	327	1759717	328	1759748	347	1759778	353
1759510	329	1759540	328	1759602	334	1759633	317	1759677	320	1759718	324	1759749	357	1759779	353
1759511	329	1759541	328	1759603	334	1759634	323	1759678	320	1759720	250	1759750	357	1759780	353
1759512	329	1759542	328	1759604	334	1759635	323	1759679	320	1759721	251	1759751	357	1759781	353
1759513	329	1759543	328	1759605	334	1759636	323	1759683	318	1759722	252	1759752	357	1759782	353
1759514	329	1759544	328	1759606	334	1759637	323	1759684	318	1759723	253	1759753	357	1759799	353
1759515	329	1759545	328	1759607	334	1759638	323	1759685	318	1759724	274	1759754	357	1760233	353
1759516	329	1759546	328	1759608	334	1759639	323	1759686	318	1759725	344	1759755	358	1760234	353
1759517	329	1759547	328	1759609	334	1759640	323	1759687	318	1759726	344	1759756	358	1760235	265
1759518	329	1759548	328	1759610	334	1759641	324	1759688	318	1759727	344	1759757	358	1760236	265
1759519	329	1759549	328	1759612	316	1759642	326	1759689	318	1759728	344	1759758	358	1760237	265
1759520	329	1759550	328	1759613	316	1759643	324	1759690	319	1759729	344	1759759	358	1760238	265
1759521	329	1759551	328	1759614	316	1759644	324	1759691	319	1759730	344	1759760	358	1760239	266
1759522	329	1759552	328	1759615	316	1759645	325	1759692	319	1759731	345	1759761	342	1760240	266
1759523	315	1759553	338	1759616	316	1759646	324	1759693	319	1759732	345	1759762	342	1760241	263
1759524	315	1759554	338	1759617	316	1759647	324	1759694	319	1759733	345	1759763	342	1760242	259
1759525	315	1759555	338	1759618	316	1759648	324	1759695	319	1759734	345	1759764	342	1760243	258
1759526	315	1759556	338	1759619	333	1759649	324	1759696	319	1759735	345	1759765	342	1760244	260
1759527	315	1759557	338	1759620	333	1759650	324	1759700	339	1759736	345	1759766	342	1760245	260
1759528	315	1759558	338	1759621	333	1759652	324	1759701	339	1759737	346	1759767	248	1760246	260
1759529	315	1759559	338	1759622	333	1759653	324	1759702	339	1759738	346	1759768	343	1760247	260
1759530	330	1759568	335	1759623	333	1759654	327	1759703	339	1759739	346	1759769	343	1760249	260

RSK-nr.	Sida	RSK-nr.	Sida	RSK-nr.	Sida	RSK-nr.	Sida	RSK-nr.	Sida	RSK-nr.	Sida	RSK-nr.	Sida	RSK-nr.	Sida
1760250	260	1760282	350	1760319	359	1760354	361	1767023	268	1767053	269	1767083	266	1767106	331
1760251	260	1760283	350	1760320	359	1760355	279	1767024	268	1767054	269	1767084	266	1767107	270
1760252	264	1760284	350	1760321	359	1760356	362	1767025	268	1767055	269	1767085	266	1767107	331
1760253	264	1760285	350	1760322	359	1760357	362	1767026	268	1767056	269	1767086	266	1767108	276
1760254	262	1760286	351	1760323	281	1760358	283	1767027	268	1767057	269	1767087	266	1767109	276
1760255	262	1760287	351	1760324	282	1760359	283	1767028	268	1767058	269	1767088	266	1767110	276
1760256	262	1760288	351	1760325	268	1760360	283	1767029	268	1767059	269	1767089	266	1767111	276
1760257	262	1760289	351	1760326	355	1760361	283	1767030	268	1767060	269	1767090	285	1767112	276
1760258	262	1760290	351	1760327	355	1760363	286	1767031	268	1767061	269	1767091	285	1767113	276
1760259	348	1760291	351	1760328	355	1760363	287	1767032	268	1767062	269	1767092	285	1767114	276
1760260	348	1760292	352	1760329	355	1767000	248	1767033	268	1767063	269	1767093	285	1767115	278
1760261	348	1760293	354	1760330	355	1767001	248	1767034	268	1767064	265	1767094	285	1767116	278
1760262	348	1760294	354	1760331	355	1767002	248	1767035	268	1767065	265	1767095	285	1767117	278
1760264	348	1760295	354	1760332	356	1767003	248	1767036	249	1767066	265	1767096	285	1767118	278
1760265	348	1760296	354	1760333	356	1767004	248	1767037	249	1767067	265	1767097	285	1767119	278
1760266	349	1760297	354	1760334	356	1767005	248	1767038	249	1767068	265	1767098	285	1767120	278
1760267	349	1760298	354	1760335	356	1767006	248	1767039	249	1767069	265	1767099	285	1767121	278
1760268	349	1760299	354	1760336	356	1767007	248	1767040	249	1767070	265	1767100	270	1767122	278
1760269	349	1760300	284	1760337	356	1767008	248	1767041	249	1767071	265	1767100	331	1767123	278
1760270	349	1760301	284	1760338	360	1767009	248	1767042	249	1767072	265	1767101	270	1767124	278
1760272	349	1760302	284	1760343	360	1767010	248	1767043	249	1767073	265	1767101	331	1767125	278
1760273	349	1760303	285	1760344	360	1767013	267	1767044	249	1767074	265	1767102	270	1767126	275
1760274	349	1760304	363	1760345	360	1767015	268	1767045	249	1767075	265	1767102	331	1767127	275
1760275	349	1760306	363	1760346	360	1767016	268	1767046	269	1767076	265	1767103	270	1767128	275
1760276	349	1760307	363	1760348	360	1767017	268	1767047	269	1767077	265	1767103	331	1767129	275
1760277	349	1760308	363	1760349	361	1767018	268	1767048	269	1767078	265	1767104	270	1767130	275
1760278	349	1760309	363	1760350	361	1767019	268	1767049	269	1767079	265	1767104	331	1767131	275
1760279	349	1760310	363	1760351	361	1767020	268	1767050	269	1767080	266	1767105	270	1767133	277
1760280	349	1760311	359	1760352	361	1767021	268	1767051	269	1767081	266	1767105	331	1767134	277
1760281	350	1760312	359	1760353	361	1767022	268	1767052	269	1767082	266	1767106	270	1767135	277

RSK-nr.	Sida	RSK-nr.	Sida	RSK-nr.	Sida	RSK-nr.	Sida
1767136	277	1767166	250	1767196	251	1767226	261
1767137	277	1767167	250	1767197	251	1767227	259
1767138	277	1767168	250	1767198	251	1767228	262
1767139	277	1767169	250	1767199	258	1767229	259
1767140	277	1767170	250	1767200	258	1767230	262
1767141	277	1767171	250	1767201	258	1767231	259
1767142	277	1767172	250	1767202	258	1767232	261
1767143	277	1767173	250	1767203	258	1767233	259
1767144	273	1767174	250	1767204	258	1767234	259
1767145	273	1767175	250	1767205	258	1767235	259
1767146	273	1767176	250	1767206	258	1767236	259
1767147	273	1767177	272	1767207	258	1767237	259
1767148	273	1767178	272	1767208	258	1767238	259
1767149	273	1767179	272	1767209	258	1767239	259
1767150	273	1767180	272	1767210	262	1767240	260
1767151	273	1767181	272	1767211	259	1767241	260
1767152	273	1767182	272	1767212	261	1767242	260
1767153	273	1767183	272	1767213	263	1767243	260
1767154	274	1767184	272	1767214	263	1767244	260
1767155	274	1767185	272	1767215	259	1767245	260
1767156	274	1767186	272	1767216	262	1767246	260
1767157	274	1767187	272	1767217	259	1767247	260
1767158	274	1767188	251	1767218	261	1767248	260
1767159	274	1767189	251	1767219	262	1767249	260
1767160	274	1767190	251	1767220	262	1767250	260
1767161	274	1767191	251	1767221	259	1767251	260
1767162	274	1767192	251	1767222	262	1767252	264
1767163	274	1767193	251	1767223	262	1767253	264
1767164	274	1767194	251	1767224	259	1767254	264
1767165	274	1767195	251	1767225	261	1767255	264

RSK-nr.	Sida	RSK-nr.	Sida	RSK-nr.	Sida	RSK-nr.	Sida
1767256	264	1767276	256	1767306	280	1767376	321
1767257	264	1767277	254	1767328	277	1767377	267
1767258	264	1767278	254	1767329	277	1767378	267
1767259	264	1767279	254	1767330	252	1767379	267
1767260	264	1767280	257	1767331	252	1767381	259
1767261	264	1767281	257	1767332	252	1767382	263
1767262	271	1767282	257	1767339	286	1767383	259
1767262	332	1767283	252	1767340	286	1767384	262
1767263	271	1767284	252	1767341	286	1767385	261
1767263	332	1767285	252	1767342	286	1767390	261
1767264	271	1767286	252	1767343	286	1767391	261
1767264	332	1767287	252	1767344	286	1767398	285
1767265	271	1767288	252	1767345	286	1767399	277
1767265	332	1767289	252	1767346	286	1767517	278
1767266	271	1767290	252	1767360	255	1767518	269
1767266	332	1767291	253	1767361	255	1767584	297
1767267	271	1767292	253	1767362	255	1767585	297
1767267	332	1767293	253	1767363	255	1767586	297
1767268	271	1767294	253	1767365	268	1767587	298
1767268	332	1767295	253	1767366	281	1767588	298
1767269	271	1767296	253	1767367	281	1767589	298
1767269	332	1767297	253	1767368	281	1767590	299
1767270	271	1767298	253	1767369	282	1767591	299
1767270	332	1767299	253	1767371	282	1767592	302
1767271	271	1767300	253	1767373	267	1767593	302
1767271	332	1767301	253	1767374	267	1767594	303
1767272	271	1767302	279	1767374	321	1767595	303
1767272	332	1767303	279	1767375	267	1767596	290
1767274	256	1767304	279	1767375	321	1767597	290
1767275	256	1767305	279	1767376	267	1767598	290

RSK-nr.	Sida	RSK-nr.	Sida	RSK-nr.	Sida	RSK-nr.	Sida
1767599	291	1769547	308				
1768002	301	1769548	310				
1768003	301	1769680	322				
1768004	311	1769681	322				
1768041	304	1769682	322				
1768042	305	1866029	288				
1768098	300	1866045	288				
1768099	300	1866078	288				
1769019	293	1866086	288				
1769026	293						
1769027	293						
1769028	293						
1769029	294						
1769456	294						
1769457	294						
1769458	294						
1769459	296						
1769499	312						
1769500	292						
1769501	292						
1769502	295						
1769503	295						
1769511	295						
1769539	295						
1769540	306						
1769541	306						
1769542	306						
1769543	307						
1769544	307						
1769545	309						