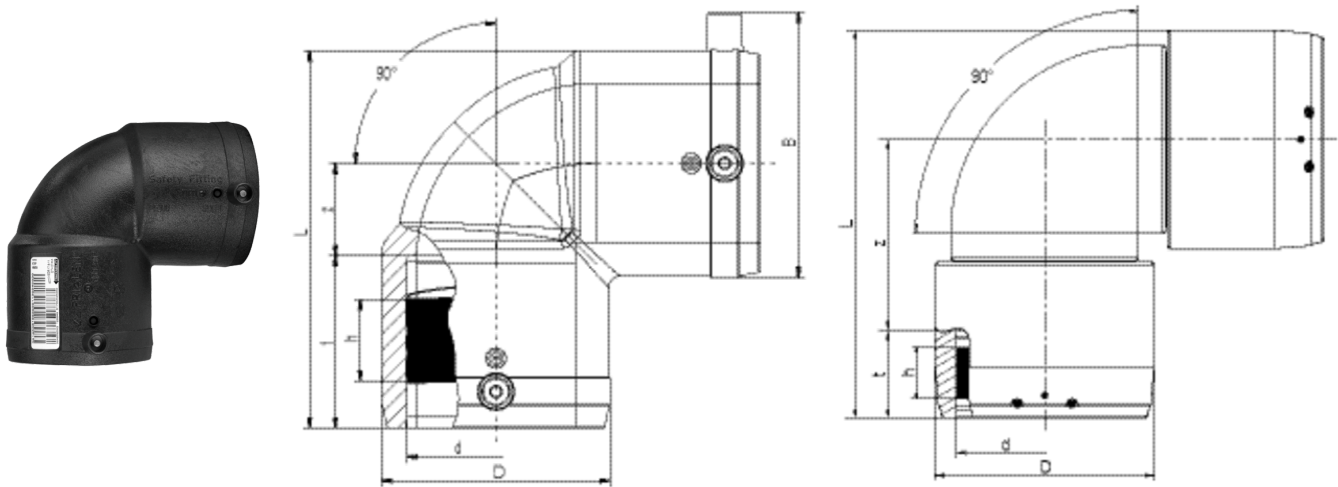


W90 SDR 11

Elbow 90°, SDR 11

Elbow W90 SDR 11

- Gas, water and H2
- Maximum pressure: Gas 10 bar, Water 16 bar
- Material: PE 100
- Angle 90 degrees
- Safety technology
- DVGW test mark: DV-8601AU2248, DV-8606AU2249 and DV-8611AU2250
- FM Approvals Class: 1613 (d 63 - d 315)



PE 100 SDR 11

Maximum permissible working pressure 16 bar (water) / 10 bar (gas)



Reference	d	B	D	h	L	t	z	Weight kg	BX	PU
616686	20	41	28,5	16	71	30	12	0,040	200	3200
612091	25	54	37	19	73	40	15	0,060	60	1920
612093	32	61	43	21	82	44	16	0,070	50	1600
612095	40	70	53	29	96	49	21	0,110	30	960
612097	50	81	66	32	113	55	26	0,190	20	640
612099	63	96	83	30	136	62	33	0,340	10	320
612101	75	111	96	37	170	70	53	0,600	12	216
612103	90	128	115	45	202	75	65	0,950	6	108
612105	110	150	138	50	234	81	84	1,560	10	80
612107	125	167	157	44	254	87	89	2,030	8	64
615276	160	210	207	44	329	92	133	4,850	3	24
615689	180	229	228	65	354	94	146	5,760	3	24
616265	200	256	254	54	392	106	159	8,557	2	16
615690	225	281	280	66	430	113	177	10,220	1	8

W90 SDR 11

Elbow 90°, SDR 11

Reference	d	B	D	h	L	t	z	Weight kg	BX	PU
616408	250	-	310	80	534	128	251	19,100	1	6
616409	280	-	350	84	621	139	307	27,500	1	2
616410	315	-	396	80	677	150	329	40,000	1	2

FRIALEN safety fittings can be fused with pipes with SDR levels 11 to 17.6. For W 90 > d 225 separate fusion zones per socket side.

Minimum wall thickness s minimum ≥ 3 mm.

Other levels of SDR can be processed on request.

Please note the mandatory labels directly on the product.

DVGW test marks issued: DV-8601AU2248, DV-8606AU2249 and DV-8611AU2250.

W90 SDR 11

Elbow 90°, SDR 11

Areas of Application

The FRIALEN-Elbow W90° is used for all changes of direction in HD-PE pipes.

Assembly Instructions

The fusion of the pipe ends with the FRIALEN-Elbows W90° takes place by FRIALEN-fusing – leakproof and longitudinally strong.

The pipe ends are prepared according to the general installation instructions (see “Assembly Instructions” for “FRIALEN-Safety Fittings for house connections and distribution pipes up to d 225”). This involves removing the oxide skin and cleaning the pipe ends.

Good reasons for using the FRIALEN-Elbows W90°:

- Large coupler depth for ease of pipe guiding (no holding clamps required)
- Extra wide fusion zones
- Maximum stability through great wall thickness
- Cold zones at the front side and in the middle of the coupler
- Exposed heating coil for direct heat transmission to the pipe
- Small annular gap for build-up of optimum joining pressure in the fusion zone
- Contacts safe to touch
- Fusion indicator for visual fusion control
- Durable batch marking
- Individually wrapped for dirt protection
- Additional barcode for tracing back the fitting (Traceability-Coding)