

SA

Saddle with spigot, SDR 11

Saddle with spigot SA SDR 11

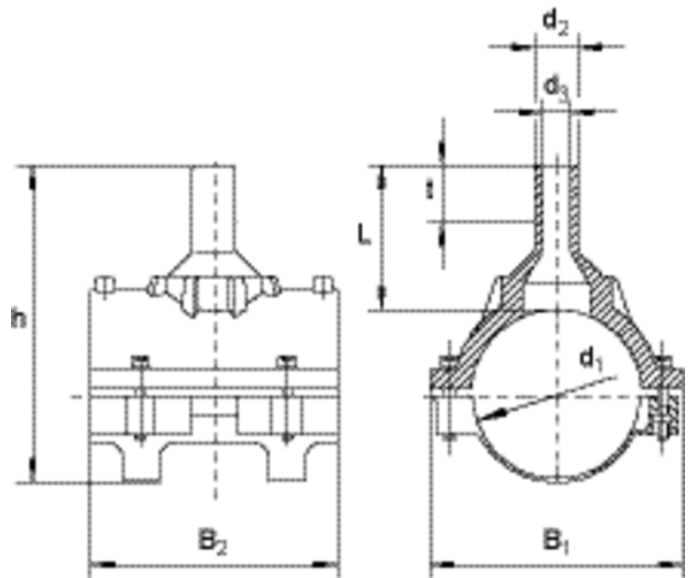
- Gas, water and H₂
- Maximum pressure: Gas 10 bar, Water 16 bar
- Material: PE 100
- Saddle component with clamp
- Tapping under pressure possible
- Safety technology
- DVGW test mark: DV-8601AU2248 and DV-8606AU2249.

Note:

For the pressure-free tapping, there is our drilling device FWAB.

For tapping under pressure, we recommend the drilling tool from Hütz & Baumgarten (www.huetz-baumgarten.de).

If required, please contact our hotline: +49 621 486-2325.



PE 100 SDR 11

Maximum permissible working pressure 16 bar (water) / 10 bar (gas)



Reference	d ₁	d ₂	d ₃	B1	B2	h	L	t	Drilling Ø d _a	Weight kg	BX	PU
612757	63	32	22	108	118	171	100	44	20	0,330	20	360
612759	63	50	37	108	118	184	113	55	36	0,370	20	360
615020	75	50	38	110	125	167	82	55	36	0,430	15	270
615285	90	32	21	155	150	207	103	44	20	0,700	20	160
612819	90	63	50	155	150	207	103	63	46	0,720	20	160
615334	110	32	24	178	180	238	125	51	20	0,788	12	96

SA

Saddle with spigot, SDR 11

Reference	d ₁	d ₂	d ₃	B1	B2	h	L	t	Drilling Ø d _a	Weight kg	BX	PU
615031	110	50	39	178	180	245	132	60	36	0,816	12	96
612760	110	63	49	178	180	263	150	81	46	0,868	12	96
615411	110	90	70	165	190	228	115	79	65	0,960	12	96
615087	125	32	21	190	185	248	109	44	20	0,945	12	96
612761	125	63	47	190	185	248	109	63	46	0,990	12	96
615412	125	90	70	185	205	243	116	79	65	1,080	12	96
615584	125	110	86	185	205	243	116	82	84	1,150	10	80
612886	160	32	21	223	265	289	126	44	20	1,440	8	64
612762	160	63	47	223	265	303	140	63	46	1,520	6	48
615413	160	90	70	223	265	303	140	79	65	1,640	2	36
615739	160	110	86	223	265	303	140	82	84	1,765	2	36
615585	160	125	98	223	265	303	140	87	95	1,880	2	36
612763	180	63	47	240	195	291	109	63	46	1,190	6	48
615414	180	90	70	241	285	312	116	79	65	1,820	2	36
615948	180	110	86	241	285	319	136	82	84	1,960	2	36
615740	180	125	98	241	285	324	141	87	95	2,110	2	36
612764	200	63	47	250	195	311	109	63	46	1,260	5	40
612765	225	63	47	255	195	336	109	63	46	1,210	5	40
615415	225	90	70	284	279	358	130	79	65	1,950	5	40
616044	225	110	86	284	279	368	140	82	84	1,960	5	40
616045	225	125	97	284	279	374	146	87	95	2,240	4	32
616046	225	160	125	284	279	385	157	98	123	2,580	4	32

FRIALEN safety fittings can be fused with SDR levels 11 to 17.6. Saddle mouldings d 63 can only be fused with pipes of the SDR level 11. Minimum wall thickness s minimum ≥ 3 mm. Other levels of SDR can be processed on request. Please note the mandatory labels directly on the product. DVGW test marks issued: DV-8601AU2248 and DV-8606AU2249.

SA

Saddle with spigot, SDR 11

Areas of Application

The FRIALEN-Spigot Saddles SA are used for tapping of depressurised gas- and waterpipes as well as for pressure drainage. The branch line is connected with the outlet spigot by using a FRIALEN coupler UB.

Assembly Instructions

The fusion of the HD-PE distribution pipes and the house connections with FRIALEN-Spigot Saddles SA takes place by FRIALEN-fusing – leakproof and longitudinally strong.

The saddle and the outlet spigot have to be prepared according to the general installation instructions (see “Assembly Instructions” for “FRIALEN-Safety Fittings for house connections and distribution pipes up to d 225”). This involves removing the oxide skin and cleaning the pipes covered by the saddle and the coupler.

Swarfless tapping up to Ø 46 mm, from Ø 65 to Ø 123 mm extremely swarf-reduced by using the tapping equipment of Hütz + Baumgarten.

For pipes without pressure spigot saddles SA can be used as a T-piece with a reduced outlet.

For tapping the main line under operating pressure, please contact our Application Engineering Department.

Good reasons for using the FRIALEN-SA:

- Compact construction
- exposed heating element for optimal heat transfer
- Preassembled unit without loose parts
- Nearly swarfless tapping by tapping equipment of Hütz + Baumgarten
- Low tapping power
- Burr - and nearly ledge - free tapping for a maximum of hydraulic power.
- Leakage free tapping possible by means of a shut off element
- Extra wide fusion zone
- Additional barcode for tracing back the fitting (Traceability-Coding)