

MUM

Transition fitting HD-PE/gunmetal with female thread

Transition fitting gunmetal pipe MUM

- Water
- Maximum pressure: Water 16 bar
- Material: PE 100 and gunmetal (EN 1982 - CC499K-GC, thread to EN 10226-1)
- Safety technology

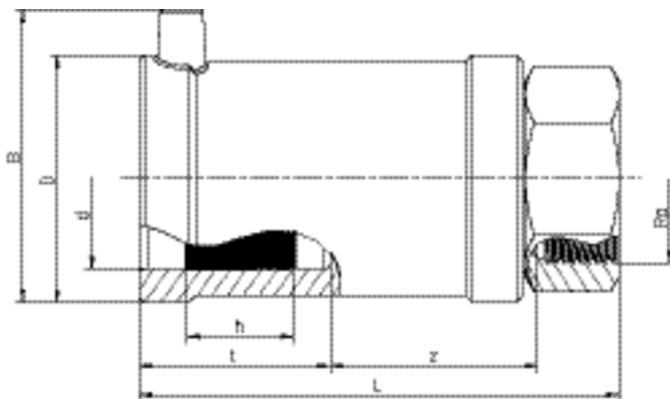
Note:

Gunmetal side is anchored non-detachable and non-rotatable in the PE.

Self-sealing, patented sealing geometry without elastomeric seal for utilisation in water areas.

Default: Gunmetal, V2A on request.

Other thread dimensions available on request.



PE 100 SDR 11

Maximum permissible working pressure 16 bar (water)



Reference	d	Rp	B	D	h	L	t	z	Weight kg	BX	PU
612595	32	1"	61	47	24	112	42	49	0,360	20	1080
612596	40	1 1/4"	70	58	30	121	46	53	0,520	20	800
612692	50	1 1/2"	80	70	30	136	53	60	0,650	15	600
612708	63	1 1/2"	94	84	35	141	53	61	1,230	10	300
612693	63	2"	94	84	35	141	53	61	1,050	10	400

Other thread dimensions on request

FRIALEN safety fittings can be fused with SDR11 - SDR17.6 pipes, minimum wall thickness $s_{\text{minimum}} \geq 3 \text{ mm}$. Other levels of SDR can be processed on request. Please note the mandatory labels directly on the product. DVGW test mark issued: DV-7501AU2256

MUM

Transition fitting HD-PE/gunmetal with female thread

Areas of Application

FRIALEN-Transition Fittings MUM are threaded joints as an adaptor from a metal pipe with external thread to a HD-PE pipe. Joint on the part of HD-PE by FRIALEN-Coupler.

Assembly Instructions

The threaded component must be held with a spanner to prevent it twisting in the HD-PE component. The fusion of the HD-PE side takes place by FRIALEN-fusing – leakproof and longitudinally strong.

The installation of the gunmetal and the HD-PE side has to be prepared according to the general installation instructions (see "Transition Fittings with threaded connection" in "Assembly Instructions" for "FRIALEN-Safety Fittings for house connections and distribution pipes up to d 225"). This involves removing the oxide skin and cleaning the pipe ends.

Good reasons for using the FRIALEN-Transition Fittings MUM:

- Compact construction
- HD-PE side with exposed heating element for optimal heat transfer
- Cold zones at the end to prevent the flow of molten material
- No holding clamps required
- Large insertion depth, extra wide fusion zones
- Gunmetal end permanently anchored in the HD-PE and will not distort
- Self sealing patented sealing geometry without elastomer seal
- Additional barcode for tracing back the fitting (Traceability-Coding)