

RSV

Repair and reinforcement saddle, SDR11

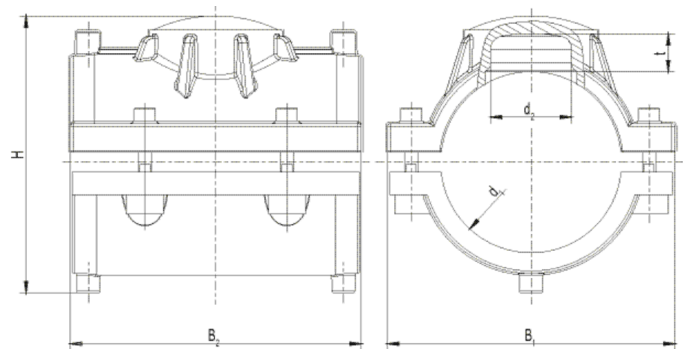
Repair and reinforcement saddle RSV SDR 11

- Gas, water and H₂
- Maximum pressure: Gas 10 bar, Water 16 bar
- Material: PE 100
- 2 combined saddle components
- Safety technology

Note:

Only apply to minor pipe damage.

The damage must be located within the repair area and not in the fusion zone.



PE 100 SDR 11

Maximum permissible working pressure 16 bar (water) / 10 bar (gas)



Reference	d ₁	d ₂	B1	B2	H	H	t	Weight kg	BX	PU
615164	90	50	155	150	148	148	21	0,920	24	192
615165	110	50	178	180	170	170	21	1,162	16	128
615166	125	50	190	185	183	183	21	1,360	15	120
615168	160	50	225	195	218	218	21	1,670	10	80
615169	180	50	240	195	238	238	21	1,810	6	48
615170	200	50	250	195	258	258	21	1,820	5	40
615171	225	50	255	195	283	283	21	1,900	5	40

FRIALEN safety fittings can be fused with SDR levels 11 to 17.6. Other levels of SDR can be processed on request. Please note the mandatory labels directly on the product. DVGW test mark issued: DV-8606AU2249

Repair and reinforcement saddle, SDR11

Areas of Application

The FRIALEN-Repair and Reinforcing Saddles are used for the repair of minor pipe damages.

Assembly Instructions

The fusion of the HD-PE pipe with the FRIALEN-Repair and Reinforcing Saddle takes place by FRIALEN-fusing – leakproof and longitudinally strong.

In order to avoid discharge of media, the leak has to be sealed with a separate plug ($\leq d_2$).

Both HD-PE saddles have to be prepared according to the general installation instructions (see "Assembly Instructions" for "FRIALEN-Safety Fittings for house connections and distribution pipes up to d 225"). This includes removing the oxide layer and cleaning the pipe covered by the saddles.

Good reasons for using the FRIALEN-VVS:

- Compact construction
- HD-PE saddle with exposed heating element for optimal heat transfer
- Sealing area free of heating wires
- Preassembled unit without loose parts
- Extra wide fusion zone
- Additional barcode for tracing back the fitting (Traceability-Coding)