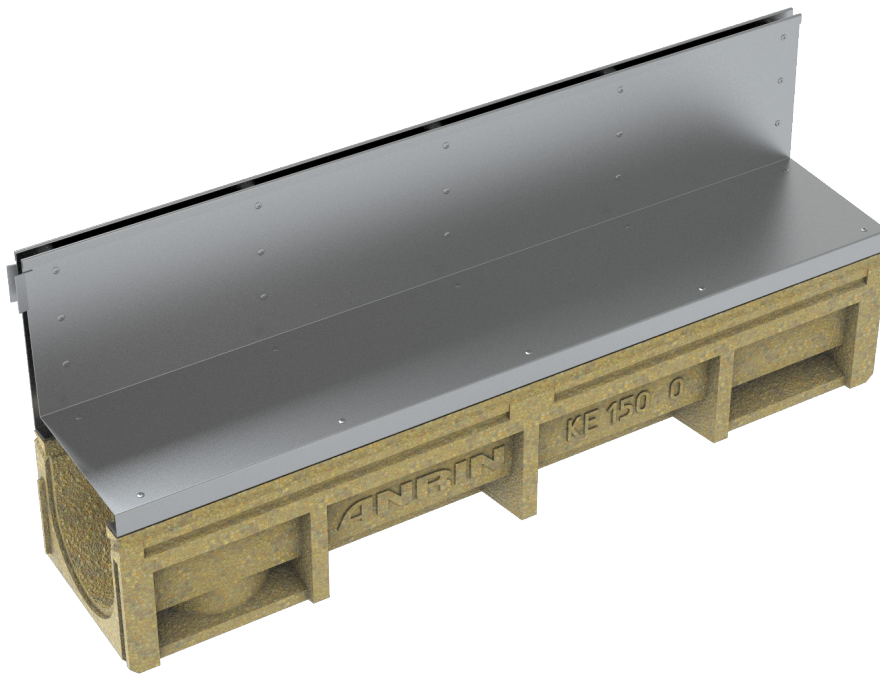


ANRIN

LEADING WATER



Technical data sheet

Slotted top channels
Z-150

Technical data sheet

ANRIN DRAIN slotted top channels Z-150 and Z-150 stainless steel

Channel drainage for the load classes A 15 to D 400

According to DIN 19580 / EN 1433 "Drainage channels for vehicular and pedestrian areas", these surfaces are assigned to specific load classes depending on the use.

Then the respective appropriate ANRIN slotted top system can be selected.

Produktspezifikationen

Product specifications	Lower channel section	Sump unit	Slotted top
Material	Resin concrete	Resin concrete	Galvanised/stainless steel
Length	50 cm and 100 cm	50 cm	50 cm and 100 cm
Width	21.4 cm	21.4 cm	21.4 cm
Height	18.8 cm	58.8 cm	23.0 cm
Slot width SW			1.25 cm
Shaft height SH			20.0 cm
Nominal width	150 mm	150 mm	
Load class	A 15 to D 400	A 15 to D 400	
Slope type	Constant invert *		
Joint type	UNILINK® joint	UNILINK® joint	
Profile version			laterally flush slot

* Channels with sloping invert on request

Material properties

Channel / component body	
Polymer concrete	polyester resin-based with mineral aggregates, additives
Compressive strength	≥ 90 N/mm ²
Bending tensile strength	≥ 22 N/mm ²
Modulus of elasticity	ca. 25 kN/mm ²
Density	2.1 – 2.3 g/dm ³
Heat resistance	100° C (permanent loading)
Frost resistance	- 50° C
Water penetration depth	0 mm
Water absorption	0,05 %
Slotted top	
Slotted top	Galvanised steel / stainless steel

Technical data sheet

ANRIN DRAIN slotted top channels

Slope types

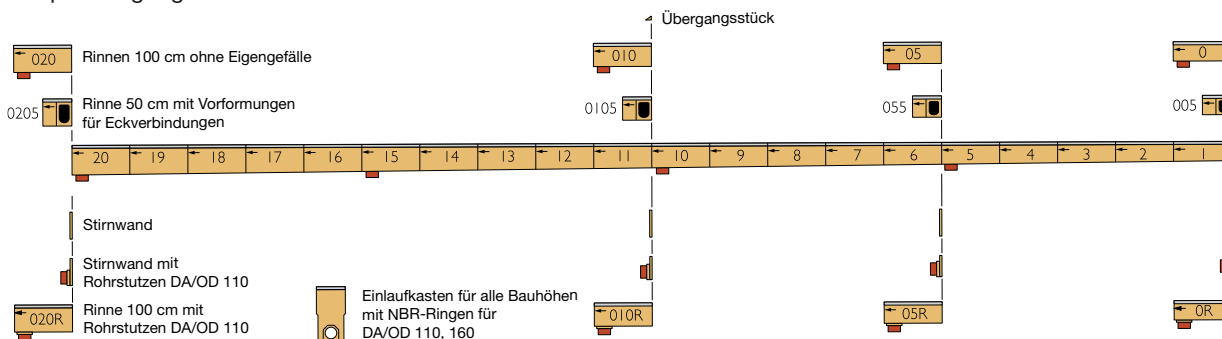
Area drainage with channel runs is normally made according to 3 different principles. The slope of water surface is achieved by the natural fall of the land. The water flows downwards with the gradient of the water level. A stepped invert is realised by an artificial gradient which is formed by the installation of stepped-height channels and connectors. The high flow rate with self-cleaning effect can be achieved with channels in natural slope.

All slope types can be combined according to hydraulic requirements and topographical conditions.

Beispiel - Wasserspiegelgefälle



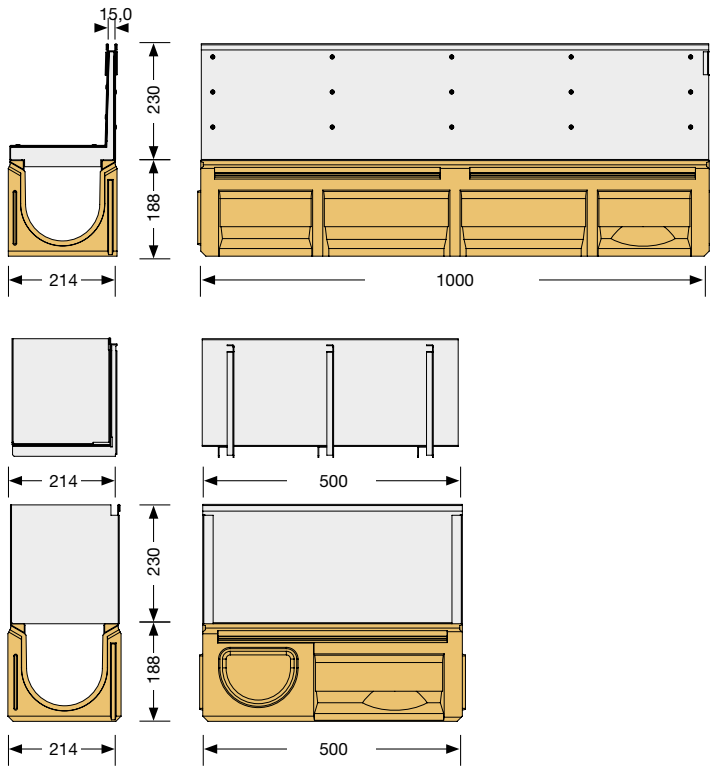
Beispiel - Eigengefälle



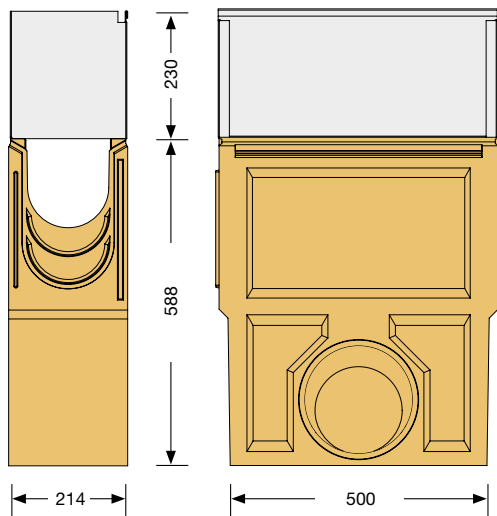
Technical data sheet

ANRIN DRAIN slotted top channels Z-150 and Z-150 stainless steel

Rinnenmaße



Zubehörmaße



Technical data sheet

ANRIN DRAIN slotted top channels Z-150 and Z-150 stainless steel

Lower channel sections

Article no.	EAN	Designation		Slope %	Length cm	Width cm	Height cm	Weight kg
02511000	4026857019947	Z-150 Channel No.	0	0	100	21.4	18.8	25.8
02511050	4026857019954	Z-150 Channel No.	005	0	50	21.4	18.8	15.5

Accessories

Article no.	EAN	Designation		Length cm	Width cm	Height cm	Weight kg
02516000	4026857020073	Z-150 Sump unit with mud bucket		50	21.4	58.8	37.7
02509021	4026857030409	Mesh insert		100			
02509030	4026857021544	Z-150 Access hook pair, galvanised steel					

Slotted tops made from galvanised steel

Article no.	EAN	Designation		Length cm	Width cm	Height cm	Weight kg
02514520	4026857026488	Z-150 S Slotted top*		100	21.4	23.0*	8.9
02514620	4026857026495	Z-150 S Access top*		50	21.4	23.0	8.8
03217000	4026857012467	Z-150 End cap, closed					1.5
03218100	4026857012474	Z-150 End cap with pipe socket DA/OD 110					1.5

Slotted tops made from stainless steel

Article no.	EAN	Designation		Length cm	Width cm	Height cm	Weight kg
02515520	4026857026501	Z-150 S Slotted top*		100	21.4	23.0*	8.9
02515620	4026857026518	Z-150 S Access top*		50	21.4	23.0*	8.8
01417000	4026857019077	Z-150 End cap, closed					1.5
01418100	4026857018957	Z-150 End cap with pipe socket DA/OD 110					1.5

* Shaft heights and slot widths can be varied to match them to an object

Technical data sheet

ANRIN DRAIN slotted top channels Z-150 and Z-150 stainless steel

Example installations

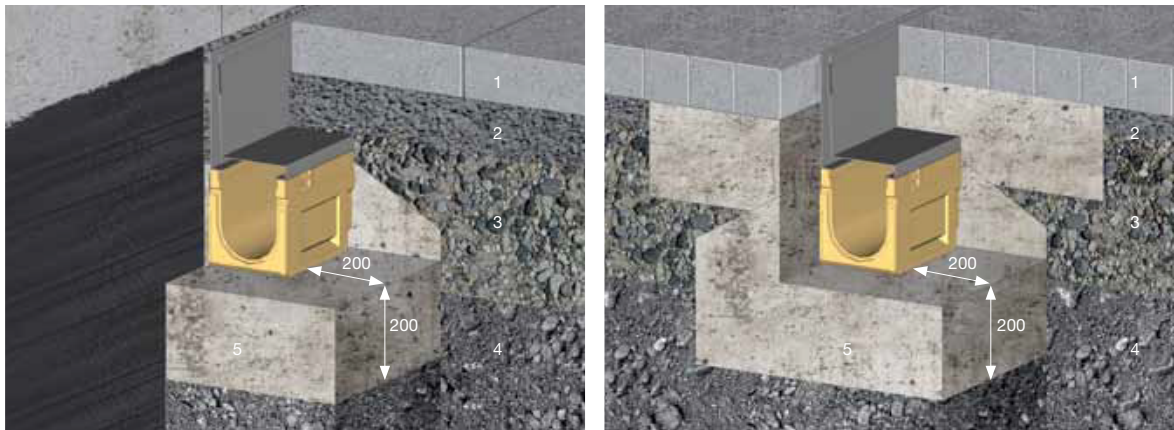
With ANRIN drainage systems, accumulating rainwater should be drained safely and quickly. Moreover, the structural elements have the task of accommodating dynamic loads arising from traffic-related demands and dispersing them to the area of the foundation.

The following installation guidelines are schematic representations. These are provided as examples and are non-binding. The information provided here is based on our long-term experience in excavation and road construction as well as the state-of-the-art technology.

Despite this, designers and planners are always obligated to check the products and the installation instructions for their appropriateness. The example details are simplified recommendations for execution. Constructions are to be re-created on a project-specific basis. Special local conditions must be reviewed by the planner and the appropriate installation types must be taken into account. The example details are simplified recommendations for execution. Constructions are to be re-created on a project-specific basis.

Important: Insert gratings for the installation.

Example installations Z-150



on stair and façade connections with paver covering in paved surface

- 1 Paver surface / paving
 - 2 Mortar bedding
 - 3 Base course with hydraulic binder
 - 4 Gravel base (frost-protection layer)
 - 5 C12/15 concrete
- All length specifications in millimetres

The current guidelines and regulations of the state-of-the-art technology must be observed for the installation. For example, these are:

- | | |
|---------------|---|
| DIN EN 1433 | “Drainage channels for vehicular and pedestrian areas” |
| DIN 19580 | “Drainage channels for vehicular and pedestrian areas” |
| RStO | “Guidelines for the standardisation of the superstructure of vehicular areas” |
| DIN EN 206-1 | “Concrete. Specification, performance, production and conformity”, to be observed, in particular:
ZTV concrete StB 07 for the construction of base courses with hydraulic binders and concrete road wearing courses. |
| (VOB) Teil C | DIN 18318 “Construction work on roadways” |
| DIN EN 1045-2 | “Concrete, reinforced and prestressed concrete structures.
Part 2: Concrete – Specification, properties, production and conformity; application rules for DIN EN 206-1” |



ANRIN GmbH
Siemensstr. 1
59609 Anröchte
Germany

+49 (0) 29 47.97 81-0
www.anrin.com
info@anrin.com