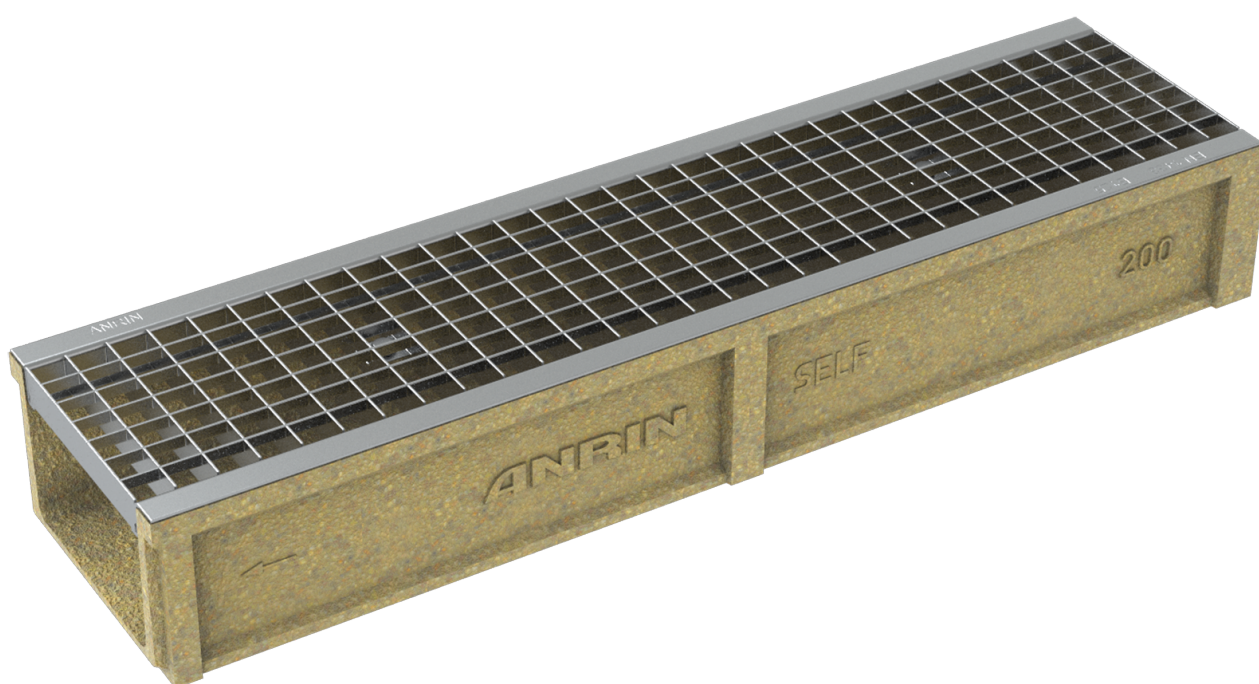


ANRIN

LEADING WATER



Technical
data sheet

SELF-200

Technical data sheet

ANRIN SELF drainage channels SELF-200

Product specifications

Product specifications	
Material	Resin concrete
Length	50 cm and 100 cm
Width	25 cm
Height	15 cm, 10 cm
Weight	12-31 kg
Nominal width	200 mm
Joint type	UNILINK®-joint
Fastening	Screw fastening
Load capacity	Mesh grating cl. B125, slotted cast iron grating, cl. C250
Cover gratings	Freely selectable

Material properties

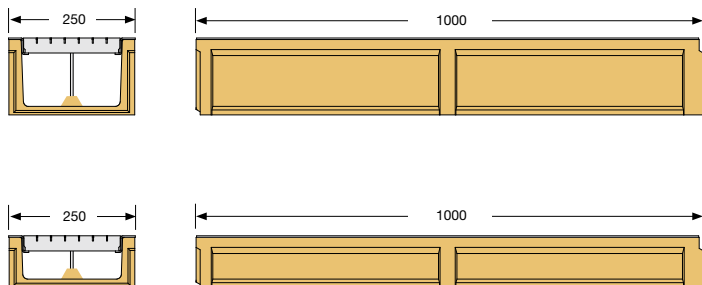
Channel / component body	
Polymer concrete	polyester resin-based with mineral aggregates, additives
Compressive strength	$\geq 90 \text{ N/mm}^2$
Bending tensile strength	$\geq 22 \text{ N/mm}^2$
Modulus of elasticity	ca. 25 kN/mm^2
Density	$2.1 - 2.3 \text{ g/dm}^3$
Heat resistance	100° C (permanent loading)
Frost resistance	- 50° C
Water penetration depth	0 mm
Water absorption	0,05 %

Channel cover	
Cover gratings	Mesh grating cl. B125, slotted cast iron grating, cl. C250

Technical data sheet

ANRIN SELF drainage channels SELF-200

Channel dimensions



Cover gratings



Mesh grating

galvanised steel
Length: 50 cm, 100 cm

Load capacity:
B125



Slotted grating OvalGrip Design

cast-iron
Length: 50 cm

Load capacity:
C250

Technical data sheet

ANRIN SELF drainage channels SELF-200

Channel types

Article no.	EAN	Designation	Length cm	Width cm	Height cm	Weight kg
07321000	4026857020646	SELF-200 Channel with galvanised mesh grating, locked*	100	25.0	15.0	25.5
07321050	4026857020660	SELF-200 Channel with galvanised mesh grating, locked	50	25.0	15.0	12.8
07324000	4026857020936	SELF-200 P Channel with galvanised mesh grating, locked*	100	25.0	10.0	25.5
07341000	4026857029588	SELF-200 Channel with with cast iron grating*	100	25.0	15.0	31.4
07341050	4026857029595	SELF-200 Channel with with cast iron grating	50	25.0	15.0	15.6
07334000	4026857030034	SELF-200 P Channel with with cast iron grating*	100	25.0	10.0	31.1

Accessories

Article no.	EAN	Designation	Length cm	Width cm	Height cm	Weight kg
07326000	4026857021285	SELF-200 Sump unit with galvanised mesh grating, locked	50	25.0	58.5	45.0
07336000	4026857029571	SELF-200 Sump unit with cast iron grating	50	25.0	58.5	45.6
07327100	4026857020998	End cap SELF-200 for start/end of channel				0.5
07328100	4026857021001	End cap SELF-200 with pipe socket DA/OD 160, for end of channel				3.5
07327400	4026857021278	End cap SELF-200P for start/end of channel				0.5
01006610	4026857000532	Foul air trap DA/OD 160				1.5
01006810	4026857000556	Pipe socket DA/OD 160				0.2

Technical data sheet

ANRIN SELF drainage channels

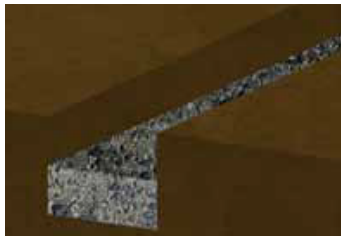
Installation instructions

The following installation guidelines are schematic representations. These are provided as examples and are non-binding. The information provided here is based on our long-term experience in excavation and road construction as well as the state-of-the-art technology.

Despite this, designers and planners are always obligated to check the products and the installation instructions for their appropriateness. The example details are simplified recommendations for execution. Constructions are to be re-created on a project-specific basis.

Important: Insert gratings for the installation.

Installation instructions



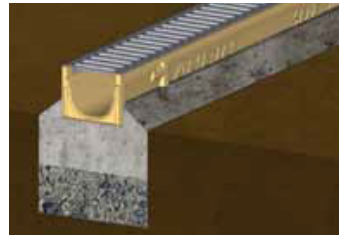
1. Dig out the trench.
Fill in and pre-condense the base course.



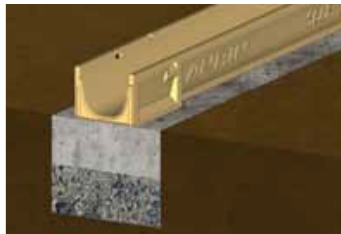
2. Connect pipe connections to the pipeline and align the components evenly.
Fill concrete bed.



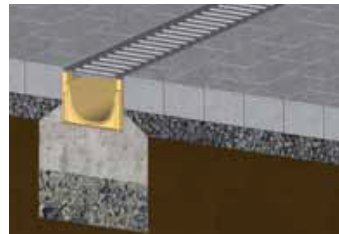
3. Fill concrete, 3 parts sand + 1 part water + 1 part cement, into the base of the trench.



4. Place cover gratings on the channels.



5. Position channel string, sump unit and end cap on the concrete bed.



6. Install paving. The layer should end 2 to 5 mm higher than the cover grating.



ANRIN GmbH
Siemensstr. 1
59609 Anröchte
Germany

+49 (0) 29 47.97 81-0
www.anrin.com
info@anrin.com