

2-DELAD KULVENTIL I SYRAFAST STÅL DN 125-200 PA 190 PN16 MED ELEKTRISKT VRIDDON



PA Ventiler AB

GO WITH OUR FLOW

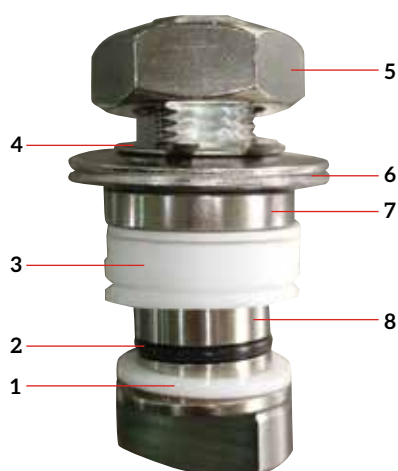
PA 190 är en tvådelad kulventil av syrafast stål med fullt genomlopp. Flänsanslutning DN 125-200 i tryck-klass PN 16. Med elektriskt vriddon.

Borstlöst elektriskt 90 graders ställon med justerbara gränslägesbrytare och antikondensvärmare som standard, IP67-kapsling.

Visuell lägesindikering samt möjlighet till manuell manövrering.



KONSTRUKTION



1. SPINDELPACKNINGEN. Är det första steget i skydd mot läckage. Packningen tätar under den roterande rörelsen och fungerar även som lagring.

2. O-RINGEN ÄR DET ANDRA STEGET I EN EFFEKTIV SPINDELTÄTNING. Stabiliserar spindeln och ger förbättrad tätning samt lagring av spindeln.

3. V-FORMAD PACKNING. Det tredje steget består av flera lager av v-formade Chevron-packningar som expanderar horisontellt då de blir utsatta för ett vertikalt tryck vilket motverkar läckage.

4. LÅSBRICKA. Säkrar spindelmuttern.

5. MUTTER. Denna trycker på hela spindel-paketet.

6. BELLEVILLE-FJÄDERBRICKA. Fjäderfunktionen anpassar packningen vid förändring av tryck och temperatur.

7. GLAND AV ROSTFRITT STÅL. Fördelar trycket jämt över packningarna.

8. HÖG YTFINISH. Ytan på spindeln är behandlad för att reducera friktionen mot packningen och ger ett lågt vridmoment.

2-DELAD KULVENTIL I SYRAFAST STÅL DN 125-200

PA 190 PN16 MED ELEKTRISKT VRIDDON



PA Ventiler AB

GO WITH OUR FLOW

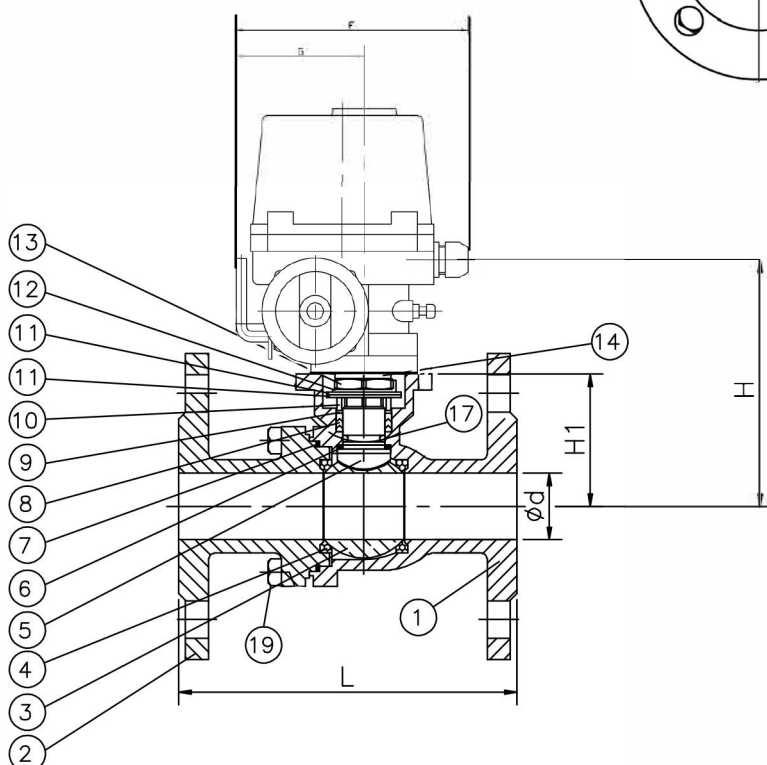
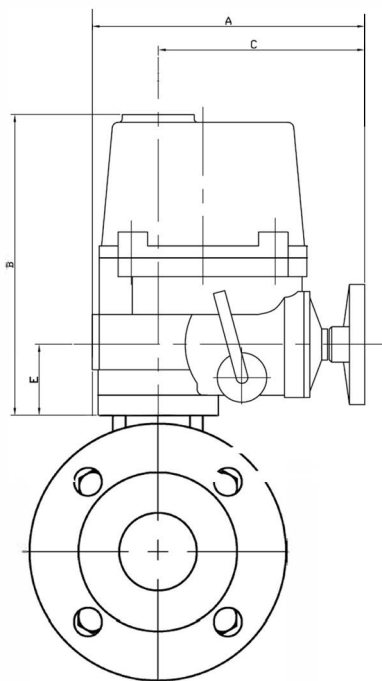
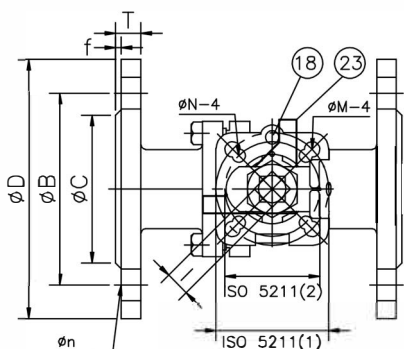
FEATURES

Flange Dimension: DIN 2543

Face to face dimension: DIN 3202 / F4

DIMENSION

DN	125	150	200
SERVO	NA38	NA60	NA100
Ød	125	150	200
L	325	350	400
l	27	27	36
ØB	210	240	295
ØC	188	212	268
ØD	250	285	340
f	3	3	3
T	22	22	24
ØM	11	11	13
ØN	9	9	11
Øn	18	22	22
H	239.6	256.5	323.5
H1	147	170	201
A	285	325	343
B	302	343	343
C	202	226	226
E	70	78	78
F	300	349	349
G	159	191	191



* MATERIALS LIST *

NO.	DESCRIPTION	QTY.	MATERIAL	
1	BODY	1	ASTM-A351-CF8M	ASTM-A216-WCB
2	CAP	1	ASTM-A351-CF8M	ASTM-A216-WCB
3	BALL	1	ASTM-A351-CF8M	ASTM-A351-CF8
4	SEAT	2	PTFE	PTFE
5	STEM	1	SUS 316	SUS 304
6	THRUST WASHER	1	PTFE	PTFE
7	JOINT GASKET	1	PTFE	PTFE
8	STEM PACKING	1	PTFE	PTFE
9	THRUST WASHER	1	PTFE 15%	PTFE 15%
10	GLAND BUSH	1	SUS 304	SUS 304
11	BELLEVILLE WASHER	2	SUS 301	SUS 301
12	STOP WASHER	1	SUS 304	SUS 304
13	STEM NUT	1	SUS 304	SUS 304
14	SQUARE WASHER	1	SUS 304	SUS 304
17	O-RING	1	VITON	VITON
18	STOP PIN	1	SUS 304	SUS 304
19	NUT	4-8	SUS 304	SUS 304

NA / NA-X ELECTRIC ACTUATOR

FEATURES

The NA electric actuator is intended for motorising industrial ¼ turn valves. The torque is 2500 Nm maximum. With a robust construction and IP67 epoxy-coated aluminium housing, the NA actuator is especially well suited for motorising ball valves and butterfly valves installed in workshops or outdoors. It has handle override and torque limiters (part for NA06 and NA09). Many available options. The NA-X version can be used in the 1 and 2 explosive atmospheres. Compliant with the EN 15714-2 standard.

AVAILABLE MODELS

NA06: 60 Nm to NA250: 2500 Nm

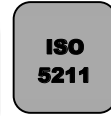
Supply voltages: 230 Vac, 400 Vac, 24 Vac, 24 Vdc



Version NA



Version NA-X



NA-X version

LIMITS OF USE

Version	NA	NA-X
IP Code	IP 67	
Ambient temperature	- 20°C / +70°C	-20°C / +55°C
Service factor	S2-70%	
Explosive atmospheres	forbidden	Zones 1 and 2

MECHANICAL FEATURES

Gear box	treated steel pinions
Angle of rotation angle	90° +/- 5°
Declutching	by lever
Override control	by wheel
Torque limiter	Apart from NA06 and NA09



Actuator	NA06	NA09	NA15	NA28	NA38	NA60	NA100	NA150	NA200	NA250
Torque (Nm)	60	90	150	280	380	600	1000	1500	2000	2500
Manoeuvring time (s)	17	17	20	24	24	29	29	87	87	87
ISO 5211	F07	F07	F07/F10	F10/F12	F10/F12	F12/F14	F12/F14	F14/F16	F14/F16	F14/F16
Drive star	17	17	17	22	27	27	27	36	36	46

DIRECTIVES AND MANUFACTURING STANDARDS

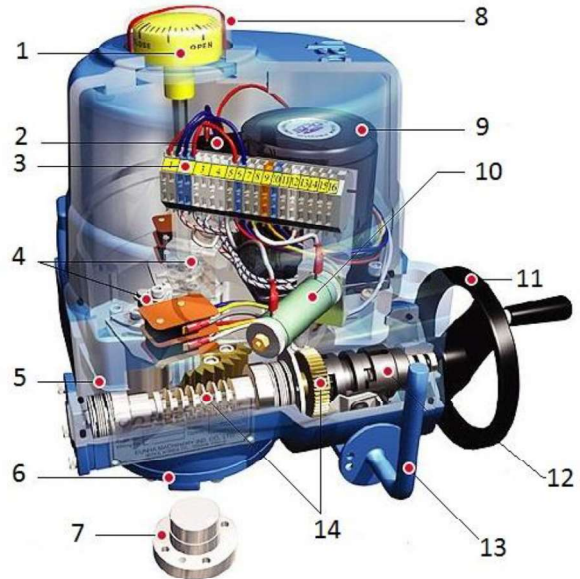
2006/42/EC machine	Connection to valves: ISO 5211
Low voltage 2006/95/EC	2004/108/EC electromagnetic compatibility
ATEX 1994/9/EC: ATEX II 2 G EEx d II B T4 – NEMKO 03ATEX1342X (only NA-X actuator)	

Information given as an indication only, and subject to possible modifications

NA / NA-X ELECTRIC ACTUATOR

MANUFACTURING

1	Position indicator	Polycarbonate
2	Condenser	
3	Wiring terminal box	
4	Limit switches	
5	Body	Aluminium alloy
6	Base	Aluminium alloy
7	Drive bushing	Steel
8	Dome	Polycarbonate
9	Electrical motor	
10	Anti-condensation heater	
11	Wheel	Steel
12	Handle override	Steel
13	Declutching lever	Steel
14	Worm drive	Steel



ELECTRICAL FEATURES

Motor protection	Thermal	Anti-condensation	20 W heater
Limit switches	2 adjustable switches	NA electrical connection	2 x C.G. M20x1.5
Auxiliary switches	2 adjustable dry switches	NA-X electrical connection	2 x C.G. M20x1.5 ATEX (NOT SUPPLIED on option)

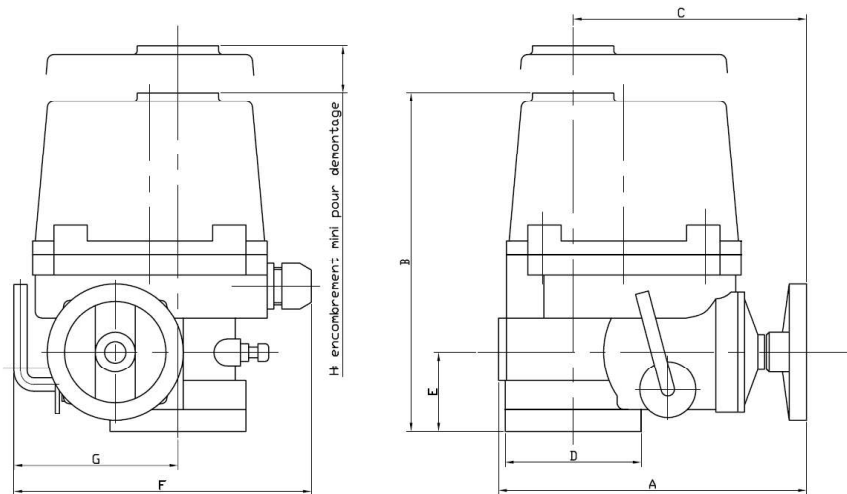
Actuator	NA06	NA09	NA15	NA28	NA38	NA60	NA100	NA150	NA200	NA250
Power (W)	15	25	40	40	60	90	180	98	180	180
Voltage	380V – 50Hz									
Holding current (A)	00:13	00:18	0.3	0.3	00:33	00:52	0.73	00:52	0.73	0.73
Inrush current (A)	00:23	00:36	00:59	0.74	0.78	01:24	1.68	0.78	1.68	1.68
Voltage	220V – 50Hz									
Holding current (A)	00:45	00:58	0.95	0.95	1.3	1.5	02:15	1.5	02:15	02:15
Inrush current (A)	0.63	0.89	01:12	01:37	1.85	02:34	3.4	02:34	3.4	3.4
Voltage	24V – 50 Hz									
Holding current (A)	3.2	4.3	6.5	8.1						
Inrush current (A)	6	8	12	14						
Voltage	24V DC									
Holding current (A)	2.2	3.5	4.5	6.5						
Inrush current (A)	4.1	4.1	6.6	13.8						

Information given as an indication only, and subject to possible modifications

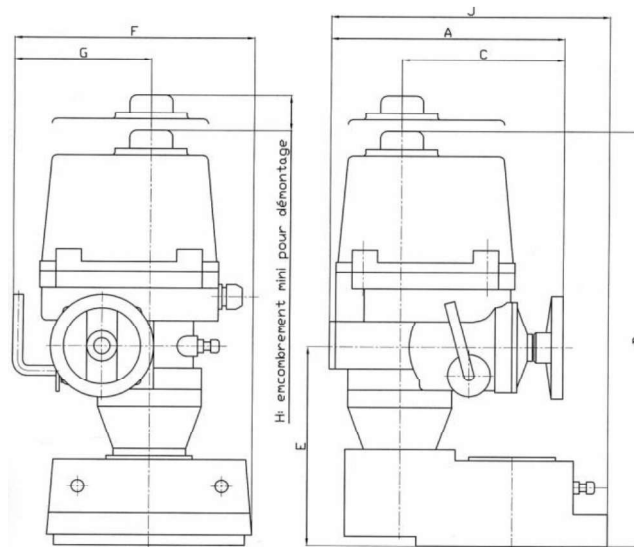
NA / NA-X ELECTRIC ACTUATOR

DIMENSIONS (mm)

NA 06 to NA 100



NA 150 to NA 250



NA	A	B	C	D	E	F	G	H
06-09	231	255	175	102	60	223	113	108
15	261	255	184	120	60	266	139	108
28-38	285	302	202	145	70	300	159	130
60-100	325	343	226	175	78	349	191	178
150-200-250	325	556	226	-	273	388	191	178

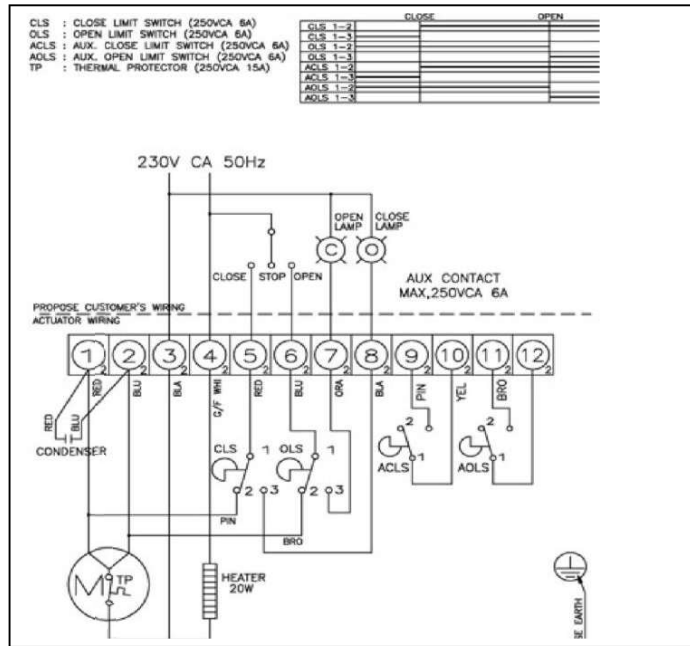
Information given as an indication only, and subject to possible modifications

NA / NA-X ELECTRIC ACTUATOR

WIRING DIAGRAM

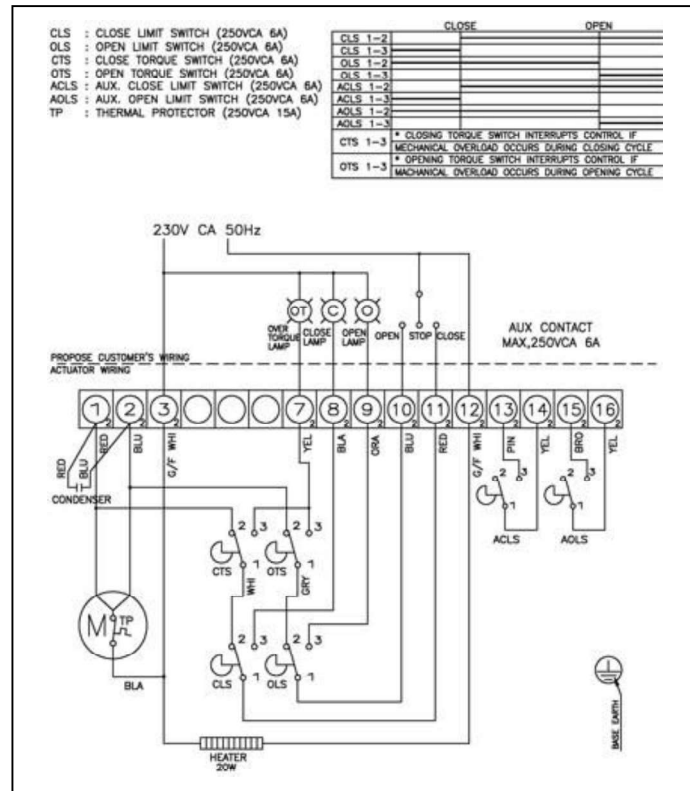
Wiring for 230V 50Hz voltage (NA06-NA09)

1	Do not use
2	Do not use
3	Common
4	phase
5	Closing command
6	Opening command
7	Opening indicator light (suggestion)
8	Closing indicator light (suggestion)
9	Closing auxiliary
10	Closing auxiliary
11	Opening auxiliary
12	Opening auxiliary



Wiring for 230V 50Hz voltage (other models)

1	Do not use
2	Do not use
3	Common
7	Overheating indicator light (suggestion)
8	Closing indicator light (suggestion)
9	Opening indicator light (suggestion)
10	Opening command
11	Closing command
12	phase
13	Closing auxiliary
14	Closing auxiliary
15	Opening auxiliary
16	Opening auxiliary

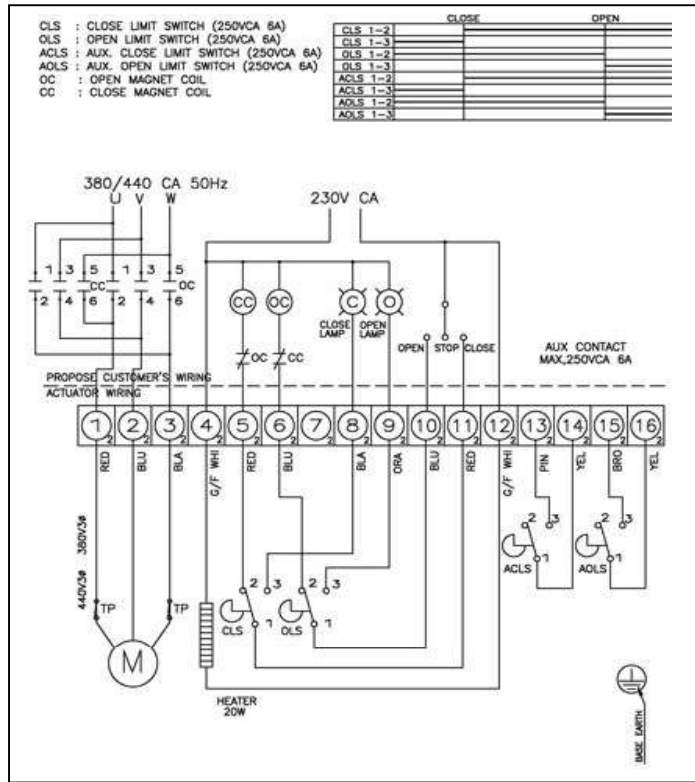


Information given as an indication only, and subject to possible modifications

NA / NA-X ELECTRIC ACTUATOR

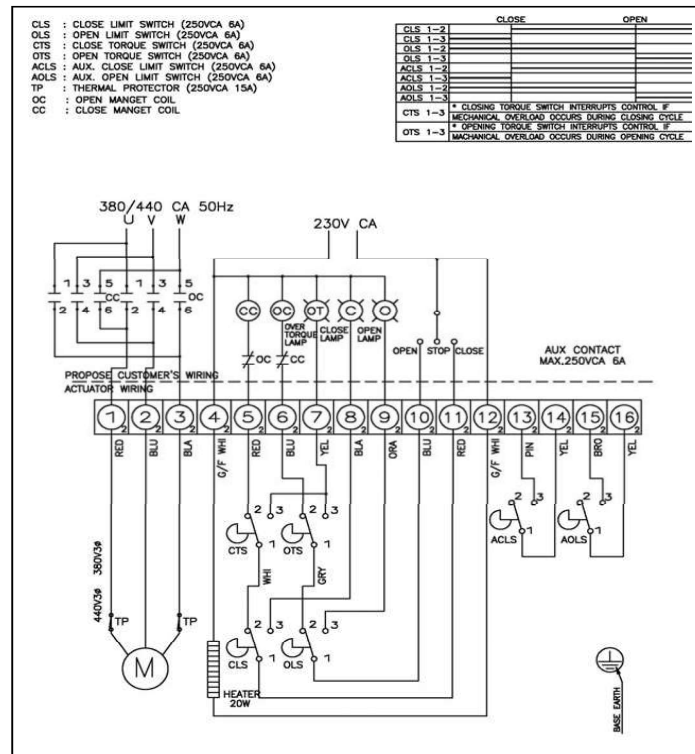
Wiring for 380V 50Hz voltage (NA06-NA09)

1	U phase
2	V phase
3	W phase
4	Heater power supply
5	Connected to the closing 11
6	Connected to the opening 10
7	Not used
8	Closing indicator light (suggestion)
9	Opening indicator light (suggestion)
10	Opening command
11	Closing command
12	Heater power supply
13	Closing auxiliary
14	Closing auxiliary
15	Opening auxiliary
16	Opening auxiliary



Wiring for 380V 50Hz voltage (other models)

1	U phase
2	V phase
3	W phase
4	Heater power supply
5	Connected to the closing 11
6	Connected to the opening 10
7	Overheating indicator light (suggestion)
8	Closing indicator light (suggestion)
9	Opening indicator light (suggestion)
10	Opening command
11	Closing command
12	Heater power supply
13	Closing auxiliary
14	Closing auxiliary
15	Opening auxiliary
16	Opening auxiliary

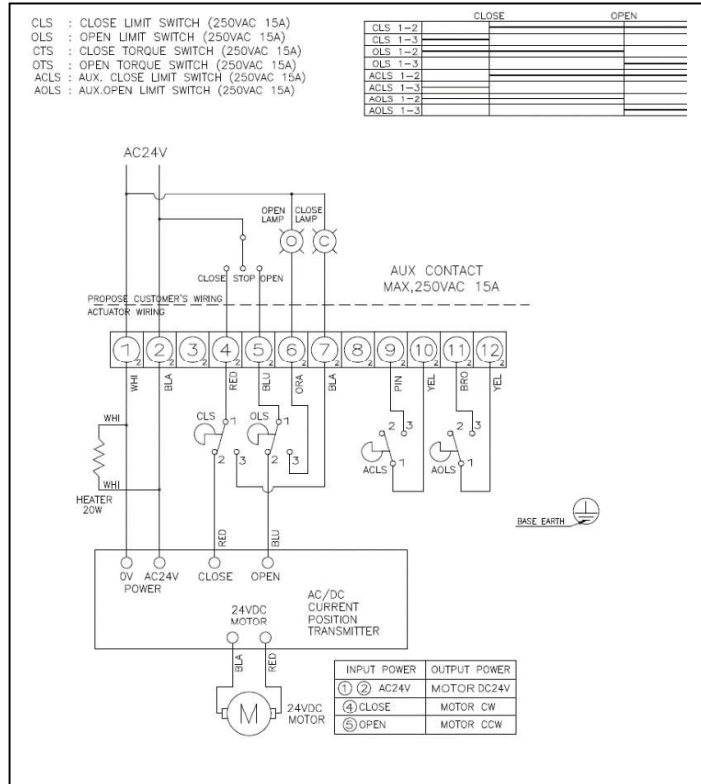


Information given as an indication only, and subject to possible modifications

NA / NA-X ELECTRIC ACTUATOR

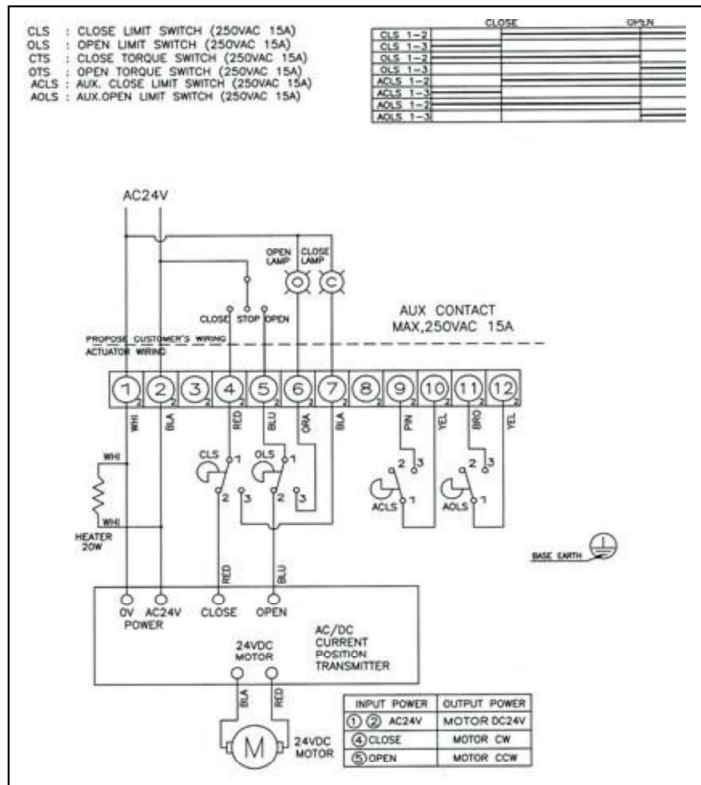
Wiring for 24V 50Hz voltage (NA06-NA09)

1	Do not use
2	Do not use
3	Common
4	phase
5	Closing command
6	Opening command
7	Opening indicator light (suggestion)
8	Closing indicator light (suggestion)
9	Closing auxiliary
10	Closing auxiliary
11	Opening auxiliary
12	Opening auxiliary



Wiring for 24V 50Hz voltage (other models)

1	Common
2	phase
3	Not used
4	Closing command
5	Opening command
6	Opening indicator light (suggestion)
7	Closing indicator light (suggestion)
8	Not used
9	Closing auxiliary
10	Closing auxiliary
11	Opening auxiliary
12	Opening auxiliary

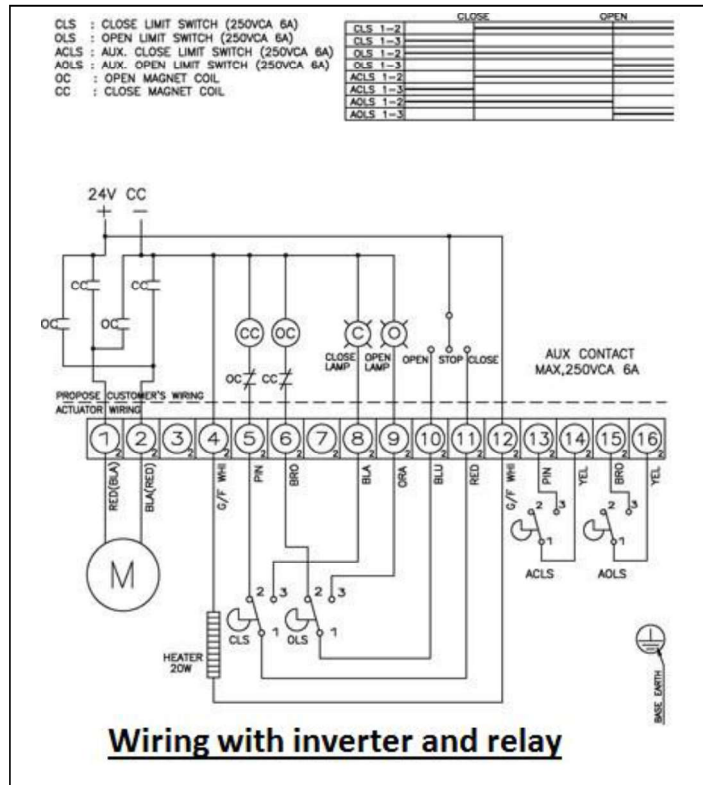
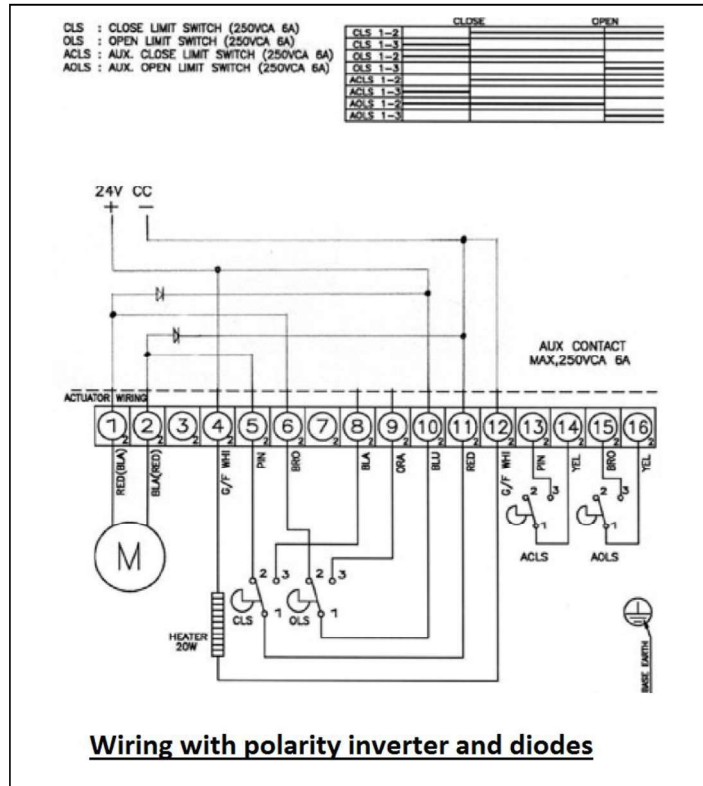


Information given as an indication only, and subject to possible modifications

NA / NA-X ELECTRIC ACTUATOR

Proposals for 24Vcc (NA06-NA09) wiring

1	Connected to terminal 10 with diode
2	Connected to terminal 11 with diode
3	Not used
4	Heater power supply
5	Connected to terminal 2
6	Connected to terminal 1
7	Not used
8	Powered closing switch
9	Powered opening switch
10	+ / - Opening command
11	+ / - Closing command
12	Heater power supply
13	Closing auxiliary
14	Closing auxiliary
15	Opening auxiliary
16	Opening auxiliary

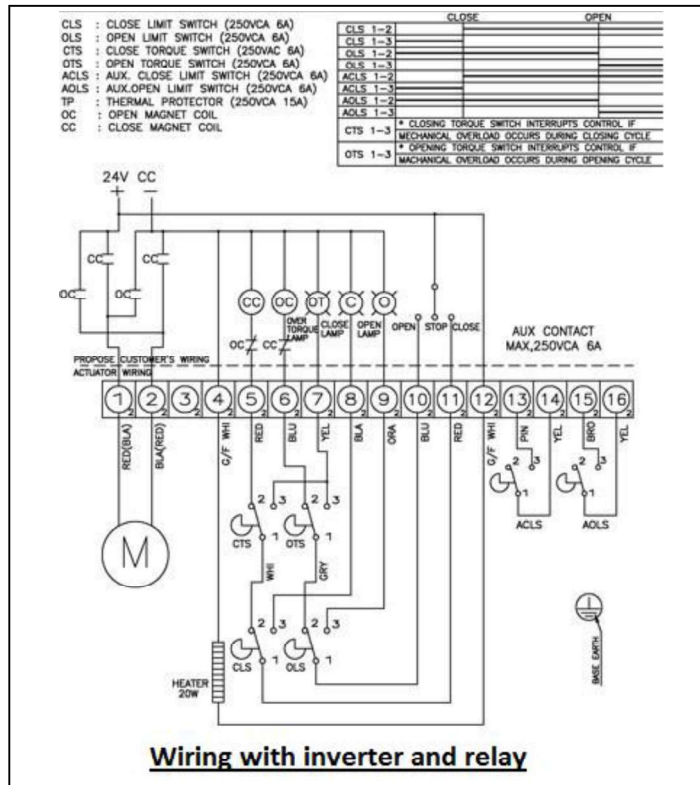
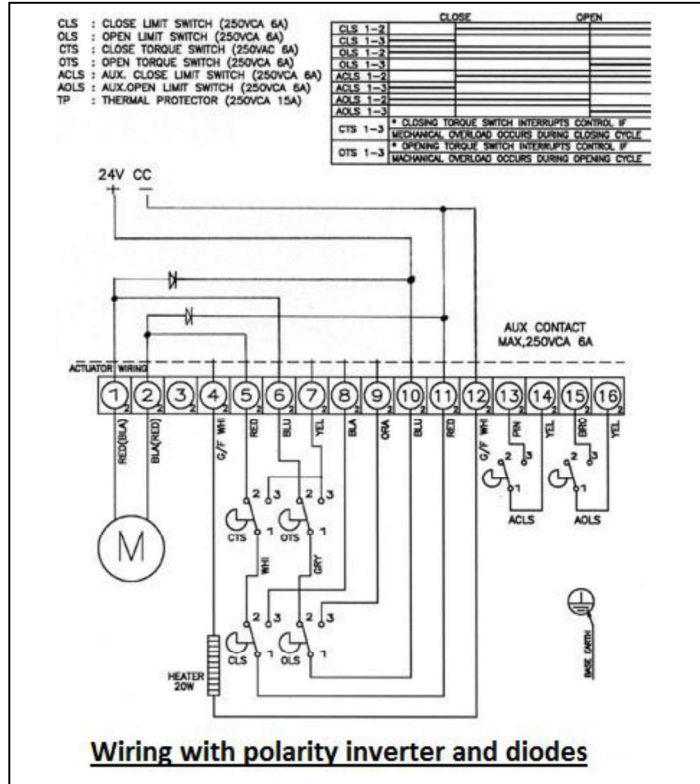


Information given as an indication only, and subject to possible modifications

NA / NA-X ELECTRIC ACTUATOR

Proposition for 24V DC wiring (other models)

1	Connected to terminal 10 with diode
2	Connected to terminal 11 with diode
3	Not used
4	Heater power supply
5	Connected to terminal 2
6	Connected to terminal 1
7	Power-supplied over-torque switch
8	Powered closing switch
9	Powered opening switch
10	+ / - Opening command
11	+ / - Closing command
12	Heater power supply
13	Closing auxiliary
14	Closing auxiliary
15	Opening auxiliary
16	Opening auxiliary



Information given as an indication only, and subject to possible modifications

NA / NA-X ELECTRIC ACTUATOR

OPTIONS

1	NA PIU: version with feedback potentiometer
2	NA CPT: version with position transmitter 4-20 mA
3	NA PCU: version with adjustment card 0-10V, 2-10V, 2-20 mA, 4-20 mA
4	NA LCU: version with local control
5	NA RBP: version with in-built fail safe/security
6	Anti-seismic test
7	Low temperature version -40
8	IP 68 version
9	120°, 135°, 180°, 270° rotation angles

OPTION LCU : LOCAL CONTROL UNIT

The LCU option allows the actuator to be operated through two different modes. The first one is the standard remote control. The second is the local control using the switch button plug on the actuator. This option is use full for maintenance and periodic inspection.

AVAILABLE MODELS

NA09 LCU : 90 Nm

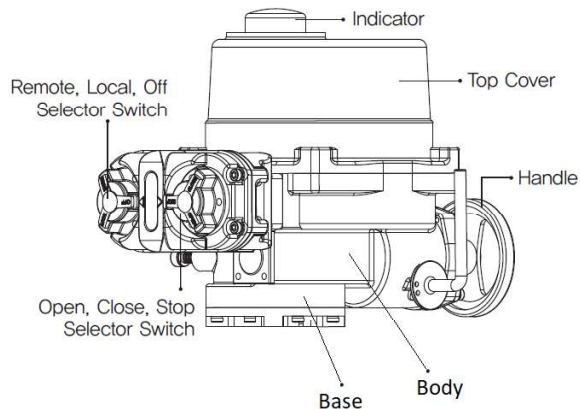
NA15 LCU : 150 Nm

NA28 LCU : 280 Nm

Supply voltages : 230 Vac, 400 Vac

SPECIFICATION

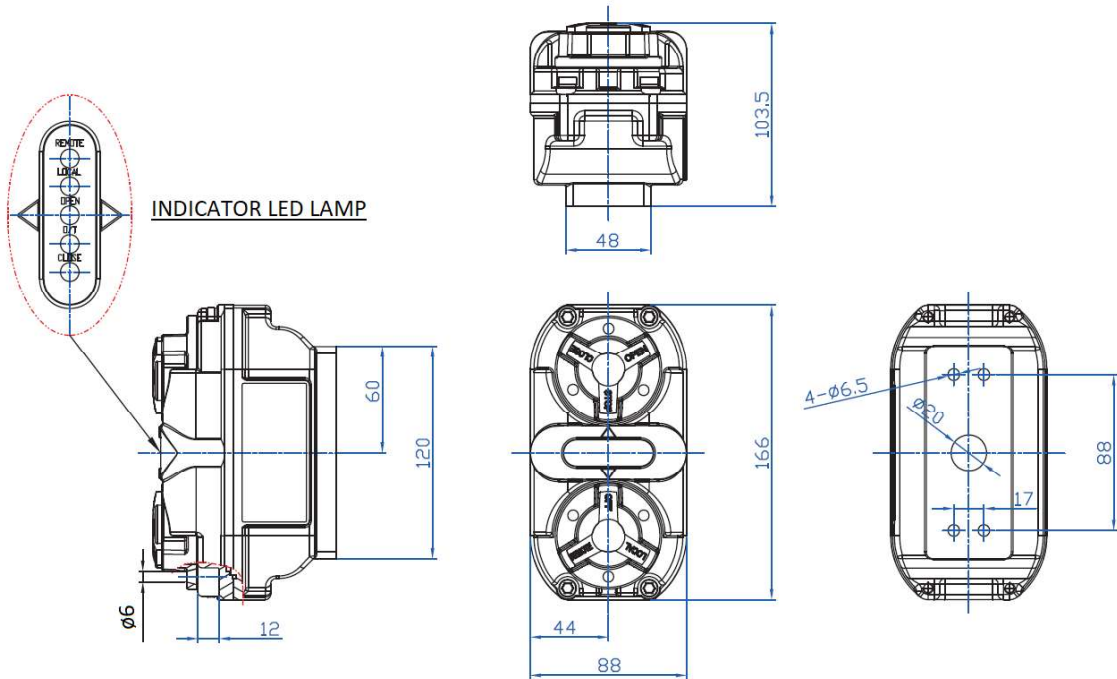
1	<u>IP code</u> : IP67
2	<u>Housing</u> : aluminium
3	Remote, Off, local selector switch
4	Open, stop, close selector switch
5	Remote, local, open, over torque, close LED Lamp
6	Pad lockable



Information given as an indication only, and subject to possible modifications

NA / NA-X ELECTRIC ACTUATOR

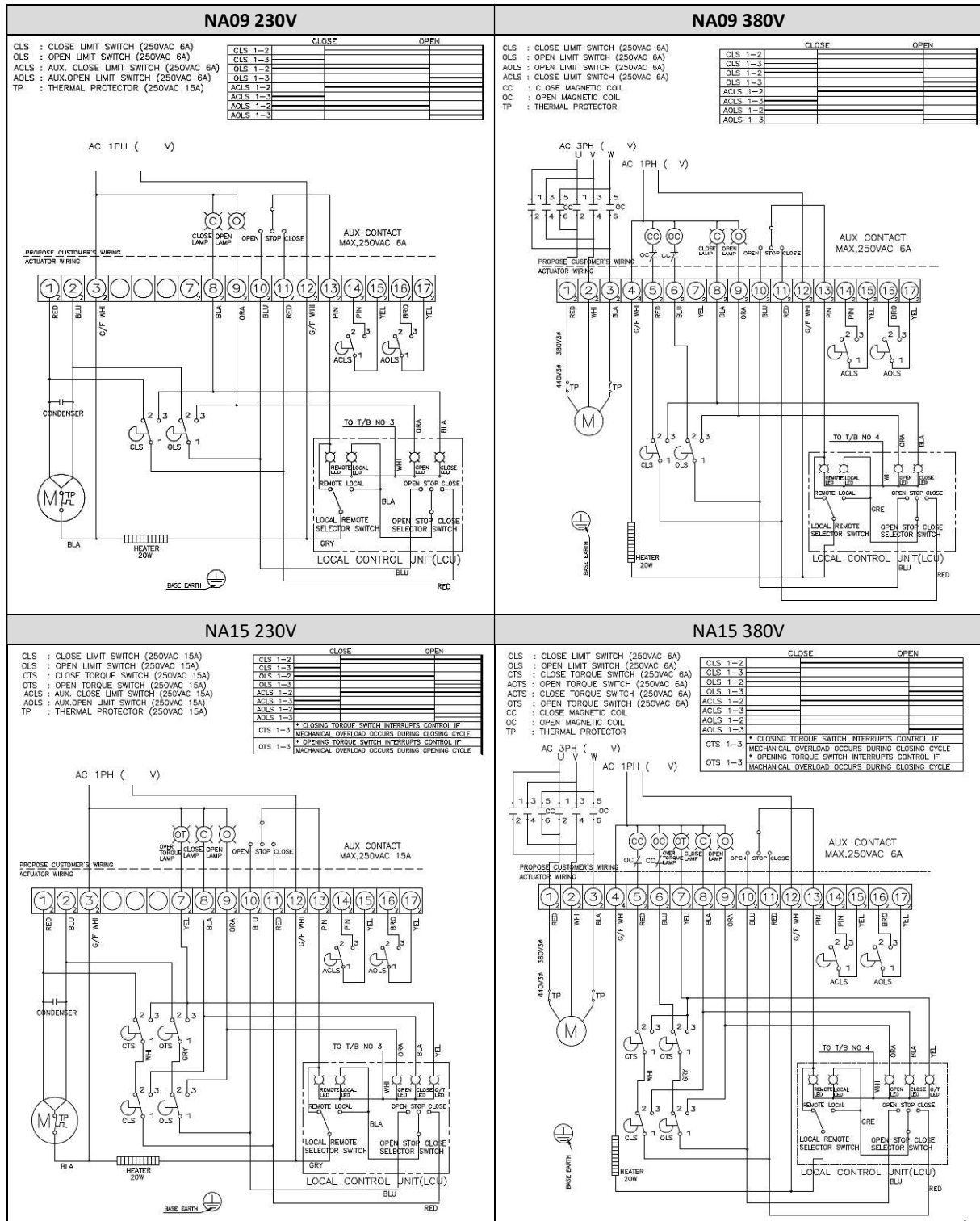
DIMENSIONS (mm)



Information given as an indication only, and subject to possible modifications

NA / NA-X ELECTRIC ACTUATOR

ELECTRICAL DIAGRAM NA LCU



Information given as an indication only, and subject to possible modifications

NA / NA-X ELECTRIC ACTUATOR

OPTION RBP : FAIL SAFE TYPE

The RBP option adds a safety function to the NA actuator: in normal operation, the rotations are ensured by the power supply of the grid. In safety mode (power cut-off), the actuator automatically operates (opening or closing the valve) to switch the valve to the safe position. The power is supplied by a battery installed in the side housing.

AVAILABLES MODELS

NA09 RBP : 90 Nm

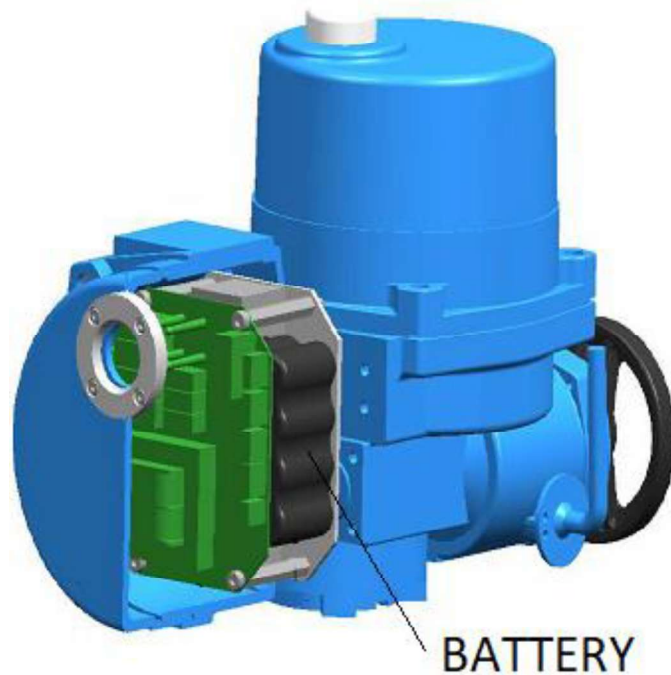
NA15 RBP : 150 Nm

Supply voltage : 230 Vac



SPECIFICATION

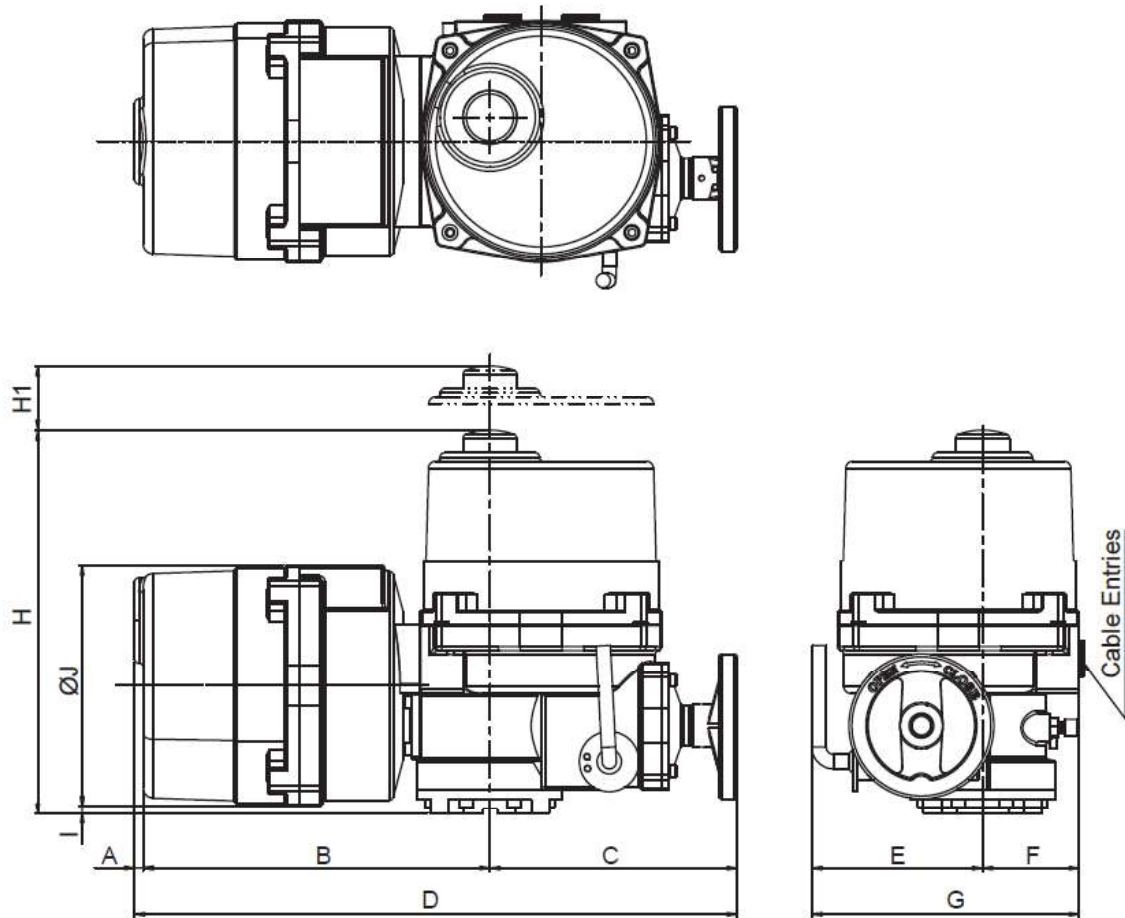
1	<u>IP rating</u> : IP67
2	<u>Housing</u> : aluminium
3	<u>Return to position</u> due to lack of power
4	<u>Power supply</u> : 230V - 50 / 60Hz
5	<u>Built-in battery</u> safety unit
6	<u>Battery size</u> : 89 x 111 x 44 <u>Charging volt</u> : DC 32V 1A <u>Charging time</u> : 3 heures <u>Battery type</u> : Ni-Cd 1,2V 20EA <u>Emergency (time)</u> : 15 minutes (Max) <u>Battery weight</u> : 1,1 kg



Information given as an indication only, and subject to possible modifications

NA / NA-X ELECTRIC ACTUATOR

DIMENSIONS (mm)

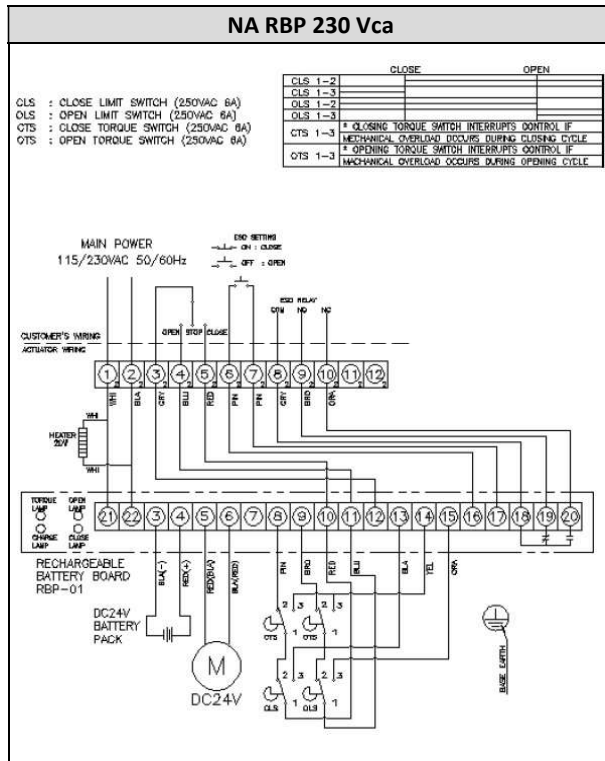


Rep	A	B	C	D	E	F	G	H	H1	ØJ
NA 09	6	244	174	424	120	68	188	270	108	170
NA 15	6	265	184	455	139	85	224	274	108	170

Information given as an indication only, and subject to possible modifications

NA / NA-X ELECTRIC ACTUATOR

SCHEMA ELECTRIQUE NA RBP



Information given as an indication only, and subject to possible modifications