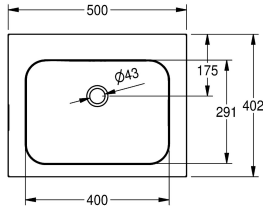
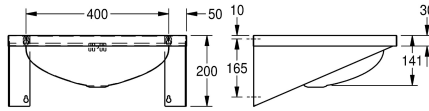


KWC ANIMA Single washbasin

Modell-Linie: ANIMA | WT500A
Washbasins & Washtroughs | Wash basins



KWC-No.

203.0000.154

2000103764

With 35 mm diameter tap hole, centered

1

Single wash basin for wall mounting, stainless steel, surface satin finished, material thickness 1 mm, seamless welded bowl with diameter 400 x 291 x 141 mm, rectangular shape, 70 mm tap ledge, with overflow, 1 1/4" plug waste, drainage rewards centric,

prewelded mounting brackets, includes screws and dowels.

Dimensions 500 x 200 x 402 mm (W x H x D)

Technical Data

bowl position
bowl - bowl height
bowl finish
bowl - depth
bowl shape
bowl - width
colour
material
material code
material thickness
overall depth
overall height
overall width
overflow
overflow position
rear upstand
siphon included
splash back
surface finish
tap ledge
type of mounting
type of waste kit
waste hole position
waste hole projection

Center
141 mm
satin finished
291 mm
rectangle
400 mm
no colour
stainless steel
1.4301 Chrome Nickel steel V2A
1 mm
402 mm
200 mm
500 mm
yes
back
no
no
optional
satin finished
yes
wall mounting
plug waste
centre back
175 mm



KWC ANIMA
Single washbasin

Modell-Linie: ANIMA | WT500A
Washbasins & Washtroughs | Wash basins

waste kit included

yes

Optional Accessories



ANIMA splash back

2000100066
SB500