

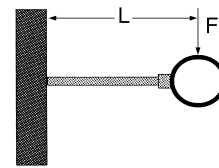
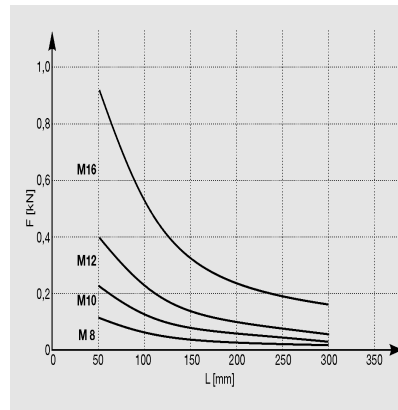
### Threaded Stud GST

Group: 1316

#### Technical Data

Thread	Working load (tension)
M8	8.0 kN
M10	12.5 kN
M12	18.1 kN
M16	33.8 kN

Permissible cantilever load:



$$\sigma_{zul} \leq 160 \text{ N/mm}^2$$

$$f \leq 3 \text{ mm}$$

Material: Steel class 4.8, electro-galvanised

Type	Length [mm]	W [kg]	Quantity [pack]	Part number
M8/25	25	0.01	100	<b>124513</b>
M8/40	40	0.01	100	<b>126913</b>
M8/70	70	0.02	100	<b>126922</b>
M8/100	100	0.03	100	<b>111580</b>
M8/125	125	0.04	50	<b>111669</b>
M8/150	150	0.05	50	<b>111599</b>
M8/175	175	0.05	50	<b>111678</b>
M8/200	200	0.06	50	<b>111605</b>
M8/225	225	0.07	25	<b>111687</b>
M8/250	250	0.08	25	<b>111614</b>
M8/300	300	0.09	25	<b>174260</b>
M10/25	25	0.01	100	<b>126940</b>
M10/40	40	0.02	100	<b>126959</b>
M10/70	70	0.03	100	<b>126968</b>
M10/100	100	0.05	100	<b>111623</b>
M10/125	125	0.06	50	<b>111696</b>
M10/150	150	0.07	50	<b>111632</b>
M10/175	175	0.08	50	<b>111702</b>
M10/200	200	0.10	50	<b>111641</b>
M10/225	225	0.11	25	<b>111711</b>
M10/250	250	0.12	25	<b>111650</b>
M10/300	300	0.14	25	<b>174269</b>
M12/100	100	0.07	50	<b>111429</b>
M12/125	125	0.09	50	<b>111766</b>
M12/150	150	0.11	50	<b>111438</b>
M12/175	175	0.12	25	<b>111775</b>
M12/200	200	0.14	25	<b>111447</b>
M12/225	225	0.16	25	<b>111784</b>
M12/250	250	0.18	25	<b>111456</b>
M16/100	100	0.13	50	<b>111465</b>
M16/125	125	0.16	50	<b>111793</b>
M16/150	150	0.19	50	<b>111474</b>
M16/200	200	0.26	25	<b>111483</b>
M16/250	250	0.32	25	<b>111492</b>