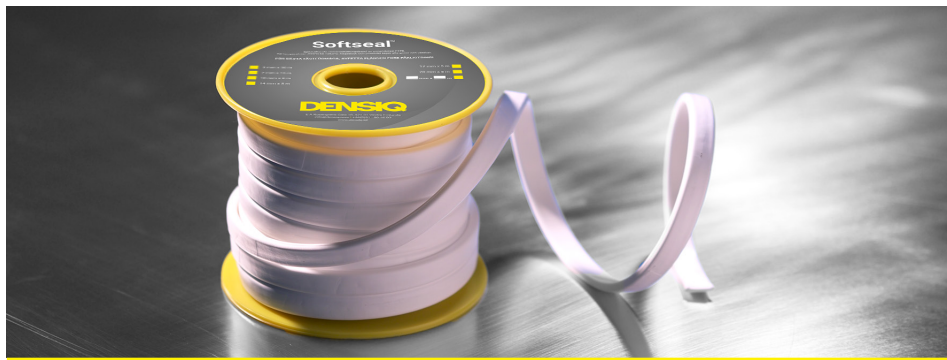


# Softseal™

## Self-adhesive ePTFE tape



### APPLICATIONS:

Flanges, lids, covers and split casing flanges. Particularly suitable for plastic, glass and enamel flanges. Softseal is resistant to all gases and fluids with the exception of fluorine and molten alkali metals.

Recommended flange surface finish:  
Ra 3.2 - 12.5 µm.

### MATERIAL DESCRIPTION:

Softseal is produced from 100% pure PTFE, which has been expanded monoaxially using a unique process into a soft and pliable material (ePTFE). Softseal is supplied as tape with self-adhesive backing for easy installation.

Monoaxially expanded PTFE is characterised by the fibre structure being oriented in one direction, which means the material grows laterally following compression between the flange surfaces.

### PROPERTIES:

Softseal has very good adaptability to flange irregularities and also seals uneven and warped flange surfaces. The material does not require high seating stresses and is therefore ideal for weak flanges as well as flanges of plastic, glass and enamel etc. Softseal has a very good chemical resistance as well as minimal cold-flow properties. It does not harden and is also easy to install and remove.

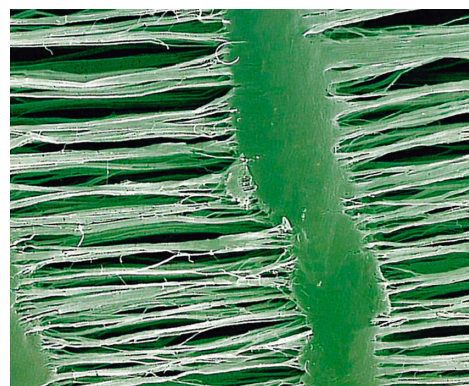
### TECHNICAL DATA:

Temperature range:	-240°C to +270°C
Max. internal pressure:	40 bar, higher in ideal conditions
Recommended seating stress:	min. 18 N/mm <sup>2</sup> , max. 150 N/mm <sup>2</sup>
pH range:	0-14
Gasket group, as per TKN 87:	2
m-factor:	1.5
y-factor:	18 N/mm <sup>2</sup>
Gas leakage (DIN 28090):	16 MPa at test nitrogen gas 6 bar, air-tightness class L
0.01<0.01mg/s•m	21 MPa at test nitrogen gas 16 bar, air-tightness class L
0.01<0.01mg/s•m	24 MPa at test nitrogen gas 40 bar, air-tightness class L
0.01<0.01mg/s•m	
Density:	0.6 g/cm <sup>3</sup>

### DIMENSIONS:

Part number	Width x thickness	Length mm	Thickness tightened mm	Width tightened mm	Max. rec. int. pressure bar*
3245003	3 mm x 1.5	30 m	0.2-0.3	6	40
3245006	5 mm x 2.0	25 m	0.3-0.4	10	40
3245007	7 mm x 2.5	15 m	0.4-0.6	14	40
3245010	10 mm x 3.0	8 m	0.6-0.8	20	20
3245014	14 mm x 5.0	5 m	0.8-1.2	25	20
3245017	17 mm x 6.0	5 m	1.0-1.5	30	20
3245020	20 mm x 7.0	5 m	1.5-2.0	35	20

\*) Softseal seals against considerably higher pressure in favourable conditions. Please consult us for more information.



### APPROVALS:

Softseal has been subject to extensive tests in demanding applications and has the following approvals:

#### **Food and Drug Administration (FDA), USA.**

Softseal also meets requirements as per FDA Regulation 21 CFR 177.1550 (PTFE) for use in food and pharmaceutical applications.