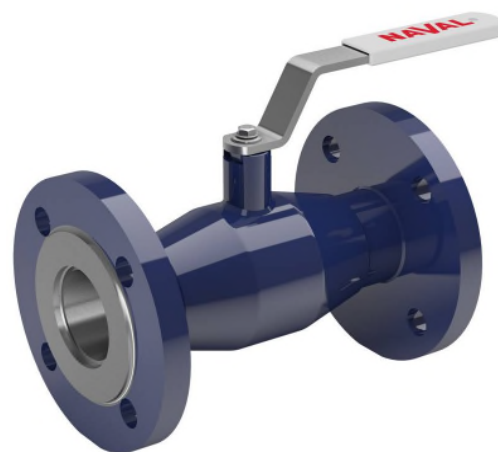


Stålkulventiler, reducerat genomlopp

fläns / fläns, DN 15-250

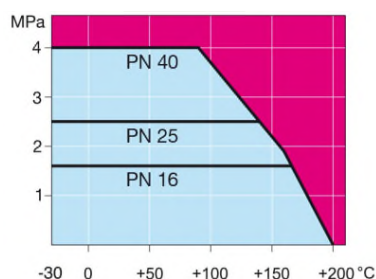
Ventilhus	DN 15-250 Stål, P235GH (1.0345)
Kultätning	DN 15-250 PTFE+C
Spindelätning	DN 15-250 FPM
Spindel	DN 15-250 Rostfritt stål, X8CrNiS18-9 (1.4305)
Kula	DN 15-250 Rostfritt stål, X5CrNi18-10 (1.4301)
Manövrering	DN 15-250 Med förzinkat stål handtag
Fläns :	EN 1092-1
	PN tillgänglig 16, 40



Funktionsvillkor

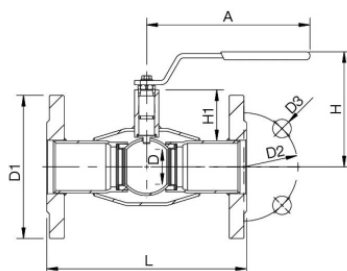
-30 °C - +200 °C

Under 0 °C kontakta tillverkaren

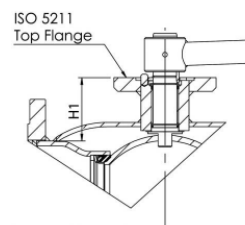


Ej för ånga

DN 15-150



DN 200-250



DN	PN	Product no. Naval	A	D	D1	D2	D3	H	H1	L	kg
15	40	285503	145	10	95.0	65.0	14.0	98	22	130	1.8
20	40	285505	145	15	105.0	75.0	14.0	103	23	150	2.5
25	40	285506	145	20	115.0	85.0	14.0	118	34	160	3.3
32	40	285507	145	25	140.0	100.0	18.0	121	33	180	5.0
40	40	285508	188	32	150.0	110.0	18.0	120	43	200	5.8
50	40	285509	188	40	165.0	125.0	18.0	127	44	230	7.8
65	16	285510	277,5	50	185.0	145.0	18.0	159	62	270	10.5
80	16	285511	277,5	65	200.0	160.0	18.0	171	68	280	12.5
100	16	285512	278,5	80	220.0	180.0	18.0	218	101	300	17.0
125	16	285513	400	100	250.0	210.0	18.0	252	101	325	25.0
150	16	285514	600	125	285.0	240.0	22.0	272	107	350	33.0
200	16	285516	870	150	340.0	295.0	22.0	280	92	400	58.0
250	16	285517	1200	200	405.0	355.0	26.0	350	108	500	102.0