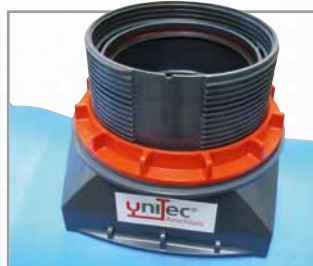


uniTec Sewer Connection

DN/OD 160

*New: With an adjustable
socket, now!*



The all-rounder

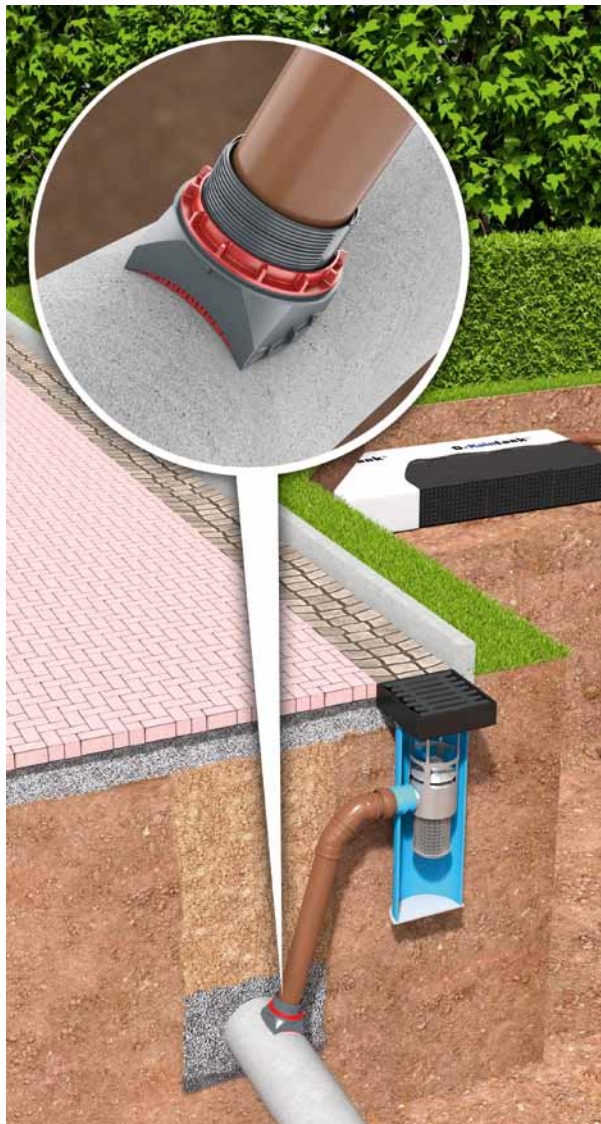


uniTec[®]
Anschluss



has an adjustable socket, now!

uniTec Sewer Connection DN/OD 160 with bore hole 200 mm



With the uniTec[®] lateral connection, subsequent connections to sewer pipes in the diameters DN 300 to DN 2400 and of many different materials such as plastic, concrete and clay can be established independently of pipe inner diameter and pipe wall thickness. The current version is equipped with an adjustable socket which allows an angular deflection at a range of 0° to 11°. The uniTec Sewer Connection meets the requirements in accordance with SFA 7. The adjustable socket of the uniTec provides a flexible connection. This feature allows to accommodate movements and settlements of the soil without incurring any damages.

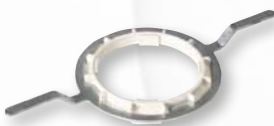
Positive-fitting and friction-locked connections

The uniTec Sewer Connection is available as Type 1 for main pipes DN 300 to DN 1000 and as Type 2 for main pipes DN 1100 to DN 2400. The diameter of the lateral connection is 160 mm; its installation requires a core bore of 200 mm. Due to its special construction, the side connection adjusts to the inner bore side edge of the main pipe and thus creates a positive and non-positive connection. The sealing collar also smoothly adjusts to the wall and the inner diameter of the main pipe.

The uniTec Sewer Connection is suitable for main pipe wall thicknesses of 10 mm up to 120 mm. Greater wall thicknesses can be bridged by using a 70 mm extension piece which may be sold separately. For the professional installation a threaded-ring spanner is necessary which can be obtained from Funke. Special nominal diameters e.g. DN 375 or DN 450 can be perfectly connected with the uniTec.



Extension Piece



Threaded-Ring Spanner

Product Name	Code	DN Main Pipe	DN/OD Connection	Bore Hole mm	Piece/Pallet
uniTec Sewer Connection Type 1	UNITECTYP1160200	300 – 1000	160	200 ± 1	36
uniTec Sewer Connection Type 2	UNITECTYP2160200	1100 – 2400	160	200 ± 1	36
Extension Piece	UNITECVL160200	–	–	–	1
Threaded-Ring Spanner with Adaptor	FAGEWINDES	–	–	–	1

Funke Kunststoffe GmbH

Siegenbeckstraße 15 • D-59071 Hamm-Uentrop

(Industriegebiet Uentrop Ost)

Tel.: +49 2388 3071-0 • Fax: +49 2388 3071-7550

info@funkegruppe.de

www.funkegruppe.de

