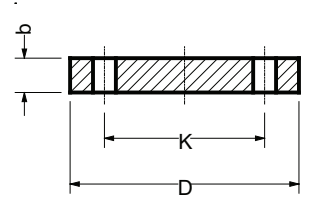


BPP



Blindfläns PP-stål. Korrosionsfri

Lev nr	RSK-nr	d (PE)	DN	D	K	b	Borrad PN	Bult	Status
BPP20	2420181	25mm	20	105	75	12	10-16	4xM12	✘
BPP25	2420182	32mm	25	115	85	16	10-16	4xM12	✓
BPP32	2420183	40mm	32	140	100	16	10-16	4xM16	✓
BPP40	2420184	50mm	40	150	110	18	10-16	4xM16	✓
BPP50	2420185	63mm	50	165	125	18	10-16	4xM16	✓
BPP65	2420186	75mm	65	185	145	18	10-16	4xM16	✓
BPP80	2420187	90mm	80	200	160	18	10-16	8xM16	✓
BPP100	2420188	110-125mm	100	220	180	18	10-16	8xM16	✓
BPP125	2420189	140mm	125	250	210	24	10-16	8xM16	✓
BPP150	2420190	160-180mm	150	285	240	24	10-16	8xM20	✓
BPP200	2420191	200-225mm	200	340	295	24	10	8xM20	✓
BPP250	2420192	250-280mm	250	395	350	30	10	12xM20	✓
BPP300	2420193	315mm	300	463	400	34	10	12xM20	✓
BPP350	2420194	355mm	350	515	460	42	10	16xM20	✓
BPP400	2420195	400mm	400	575	515	46	10	16xM24	✓

D, K och b = mått i mm. DN = nominell diameter