

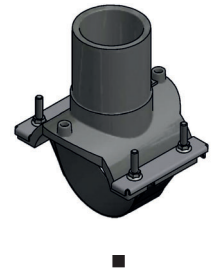
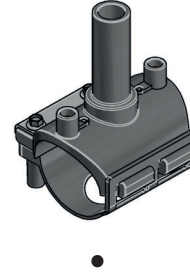
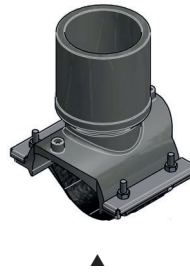
## ECOL

### Sadelgren



Lev nr	RSK-nr	d	Max hål	H/L1/L (mm)	Kartong	Vikt (kg)	Status
● ECOL 40-32	2428106	40-32 <sup>1</sup>	19 mm	82/70/100	70	0,25	✓
● ECOL 40-40	2428107	40-40 <sup>1</sup>	30 mm	82/70/100	60	0,26	✓
● ECOL 50-32	2428108	50-32 <sup>1</sup>	19 mm	82/70/100	70	0,27	✓
● ECOL 50-40	2428109	50-40 <sup>1</sup>	30 mm	82/70/100	50	0,28	✓
● ECOL 63-32	2428110	63-32	19 mm	82/70/100	70	0,30	✓
● ECOL 63-40	2428111	63-40	30 mm	82/70/100	40	0,31	✓
● ECOL 63-50	2428112	63-50	38 mm	110/75/132	40	0,32	✓
● ECOL 75-32	2428113	75-32	22 mm	82/70/100	60	0,47	✓
● ECOL 75-40	2428114	75-40	30 mm	82/70/100	40	0,48	✓
■ ECOL 75-50	2428115	75-50	38 mm	100/65/140	30	0,50	✓
■ ECOL 75-63	2428116	75-63	44 mm	100/65/140	25	0,54	✓
● ECOL 90-32	2428117	90-32	22 mm	98/75/106	30	0,47	✓
■ ECOL 90-40	2428118	90-40	30 mm	100/65/140	30	0,48	✓
■ ECOL 90-50	2428119	90-50	38 mm	100/65/140	30	0,50	✓
● ECOL 90-63	2428120	90-63	44 mm	100/82/140	20	0,54	✓
▲ ECOL 90-90	2428121	90-90	70 mm	131/100/170	10	1,08	✓
● ECOL 110-32	2428122	110-32	22 mm	97/72,5/100	30	0,47	✓
■ ECOL 110-40	2428123	110-40	30 mm	100/65/140	30	0,48	✓
■ ECOL 110-50	2428124	110-50	38 mm	100/65/140	30	0,50	✓
● ECOL 110-63	2428125	110-63	44 mm	100/82/140	20	0,54	✓
■ ECOL 110-75	2428126	110-75	59 mm	120/90/170	15	0,95	✓
■ ECOL 110-90	2428127	110-90	70 mm	120/90/170	15	1,00	✓
▲ ECOL 110-110	2428128	110-110	70 mm	143/95/174	12	1,50	✓

<sup>1</sup> d.40-50 svetsar endast SDR11. Större dim. svetsar 7.4 - 17.6

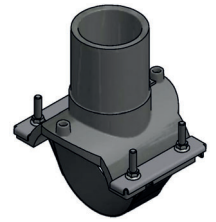


## ECOL

### Sadelgren



Lev nr	RSK-nr	d	Max hå	H/L1/L (mm)	Kartong	Vikt (kg)	Status
● ECOL 125-32	2428129	125-32	22 mm	100/65/140	30	0,47	✓
■ ECOL 125-40	2428130	125-40	30 mm	100/65/140	30	0,48	✓
■ ECOL 125-50	2428131	125-50	38 mm	100/65/140	30	0,50	✓
● ECOL 125-63	2428132	125-63	44 mm	100/82/140	15	0,54	✓
■ ECOL 125-75	2535730	125-75	59 mm	120/90/170	15	0,76	✓
■ ECOL 125-90	2428133	125-90	70 mm	120/90/170	15	1,00	✓
■ ECOL 125-110	2428134	125-110	87 mm	140/90/200	10	1,50	✓
▲ ECOL 125-125	2428135	125-125	84 mm	143/95/204	8	1,60	✓
■ ECOL 140-32	2429185	140-32	22 mm	100/65/140	30	0,48	✓
■ ECOL 140-50	2429186	140-50	38 mm	100/65/140	30	0,51	✓
■ ECOL 140-63	2428136	140-63	44 mm	100/65/140	30	0,55	✓
■ ECOL 140-90	2428949	140-90	70 mm	120/90/170	15	1,00	✓
● ECOL 160-32	2428137	160-32	22 mm	100/65/140	30	0,48	✓
■ ECOL 160-40	2428138	160-40	30 mm	100/65/140	30	0,49	✓
■ ECOL 160-50	2428139	160-50	38 mm	100/65/140	30	0,51	✓
■ ECOL 160-63	2428140	160-63	44 mm	100/65/140	30	0,55	✓
■ ECOL 160-75	2428950	160-75	59 mm	120/90/170	15	0,95	✓
■ ECOL 160-90	2428141	160-90	70 mm	120/90/170	15	1,00	✓
■ ECOL 160-110	2428142	160-110	87 mm	130/98/200	7	1,50	✓
■ ECOL 160-125	2428143	160-125	100 mm	130/98/200	6	1,60	✓
■ ECOL 180-32	2428144	180-32	22 mm	100/65/140	30	0,49	✓
■ ECOL 180-40	2428145	180-40	30 mm	100/65/140	30	0,50	✓
■ ECOL 180-50	2428146	180-50	38 mm	100/65/140	30	0,52	✓
■ ECOL 180-63	2428147	180-63	44 mm	100/65/140	30	0,56	✓
■ ECOL 180-75	2428931	180-75	59 mm	120/90/170	15	0,95	✓
■ ECOL 180-90	2428148	180-90	70 mm	120/90/170	15	1,00	✓
■ ECOL 180-110	2428149	180-110	87 mm	130/98/200	6	1,50	✓
■ ECOL 180-125	2428150	180-125	100 mm	130/98/200	6	1,60	✓
■ ECOL 200-32	2428151	200-32	22 mm	100/65/140	30	0,49	✓
■ ECOL 200-40	2428152	200-40	30 mm	100/65/140	30	0,50	✓
■ ECOL 200-50	2428153	200-50	38 mm	100/65/140	30	0,52	✓
■ ECOL 200-63	2428154	200-63	44 mm	100/65/140	30	0,56	✓



## ECOL

### Sadelgren



Lev nr	RSK-nr	d	Max hål	H/L1/L (mm)	Kartong	Vikt (kg)	Status
ECOL 200-90	2428155	200-90	70 mm	120/90/170	15	1,00	✓
ECOL 200-110	2428156	200-110	87 mm	130/98/200	8	1,70	✓
ECOL 200-125	2428157	200-125	100 mm	130/98/200	5	1,88	✓
ECOL 225-32	2428158	225-32	22 mm	100/65/140	30	0,49	✓
ECOL 225-40	2428159	225-40	30 mm	100/65/140	30	0,50	✓
ECOL 225-50	2428160	225-50	38 mm	100/65/140	30	0,52	✓
ECOL 225-63	2428161	225-63	44 mm	100/65/140	30	0,56	✓
ECOL 225-90	2428162	225-90	70 mm	130/98/200	6	1,60	✓
ECOL 225-110	2428163	225-110	87 mm	130/98/200	5	1,70	✓
ECOL 225-125	2428164	225-125	100 mm	130/98/200	5	1,88	✓
ECOL 250-32	2428165	250-32	22 mm	100/65/140	30	0,50	✓
ECOL 250-40	2428166	250-40	30 mm	100/65/140	30	0,51	✓
ECOL 250-50	2428167	250-50	38 mm	100/65/140	30	0,53	✓
ECOL 250-63	2428168	250-63	44 mm	100/65/140	30	0,57	✓
ECOL 250-90	2428169	250-90	70 mm	130/98/200	6	1,60	✓
ECOL 250-110	2428170	250-110	87 mm	130/98/200	5	1,70	✓
ECOL 250-125	2428171	250-125	100 mm	130/98/200	5	1,88	✓
ECOL 280-32	2428172	280-32	22 mm	100/65/140	30	0,52	✓
ECOL 280-40	2428173	280-40	30 mm	100/65/140	30	0,53	✓
ECOL 280-50	2428174	280-50	38 mm	100/65/140	30	0,55	✓
ECOL 280-63	2428175	280-63	44 mm	100/65/140	30	0,59	✓
ECOL 280-90	2428176	280-90	70 mm	130/98/200	6	1,60	✓
ECOL 280-110	2428177	280-110	87 mm	130/98/200	5	1,70	✓
ECOL 280-125	2428178	280-125	100 mm	130/98/200	5	1,88	✓
ECOL 315-32	2428179	315-32	22 mm	100/65/140	30	0,54	✓
ECOL 315-40	2428180	315-40	30 mm	100/65/140	30	0,55	✓
ECOL 315-50	2428181	315-50	38 mm	100/65/140	30	0,57	✓
ECOL 315-63	2428182	315-63	44 mm	100/65/140	8	0,61	✓
ECOL 315-90	2428183	315-90	70 mm	130/98/200	6	1,60	✓
ECOL 315-110	2428184	315-110	87 mm	130/98/200	6	1,70	✓
ECOL 315-125	2428185	315-125	100 mm	130/98/200	5	1,88	✓