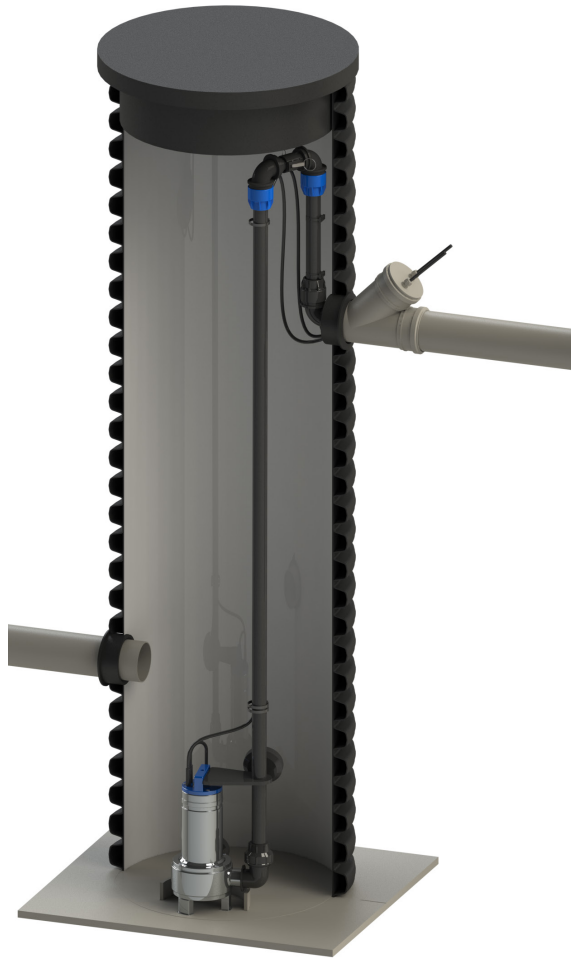


Clean pump chamber
Technical Datasheet

uponor



Clean pump chamber



Enables the use of Clean plants in **sites with deep sewer** from the house

Clean pump chamber can be **shortened or extended** according to the need

The status of the pump chamber **can be monitored** with Info panel and PlantCare

Clean pump chamber

Clean pump chamber widens the use area of Clean I and II treatment plants. The pump chamber is to be installed before the treatment plant. With it the wastewater is lifted from a deep sewer to the Clean plant. Typically houses with basements can have a deep sewer.

Clean pump chamber has flexible lifting heights. The chamber can be shortened by cutting or extended with an extension kit for the needed lifting height.

The pump chamber is integrated to the Clean steering. This allows monitoring of the status of the pump chamber with Clean Info Panel or PlantCare.

Application	Pump chamber to be placed in front of Clean I or II
Material	PE
Colour	Black
Dimension (OD mm)	600
Height (m)	2,4 (standard) 3,7 (with extension)
Standards and Approvals	-

Properties and Assortment

Clean pump chamber technical data



Uponor number	1140383
Diameter (ID mm)	600
Height, total (m)	2,39
Max sewer depth (m)	1,7

Clean pump chamber extension kit technical data



Uponor number	1140384
Diameter (ID mm)	600
Height, total (m)	1,56
Max sewer depth (m)	3,1

Pump technical data

Pump type	Lowara DOMO 7VX
Power	single-phase, 230V, 50Hz
Rated output	0,55kW
Max flow (m ³ /h)	19,5

Moving > Water

uponor

Uponor Corporation

Ilmalantori 4

00240 Helsinki

Finland

T +358 (0)20 129 211

F + 358 (0)20 129 2841

www.uponor.com