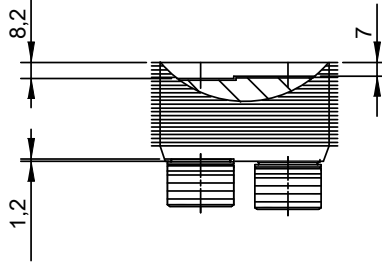
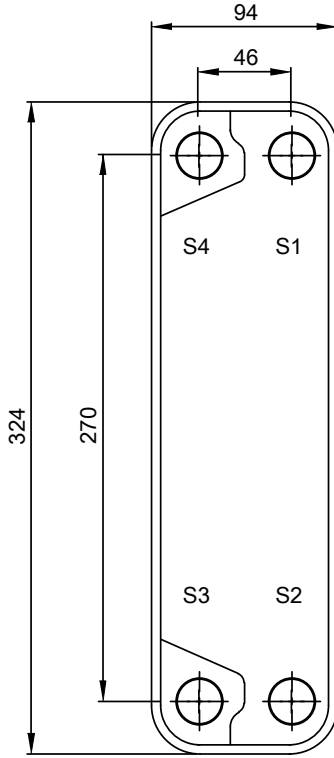
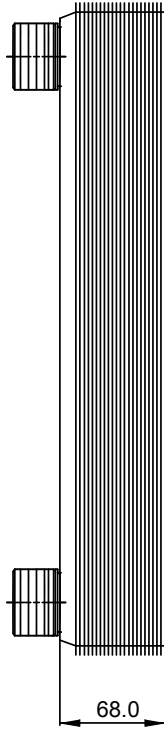
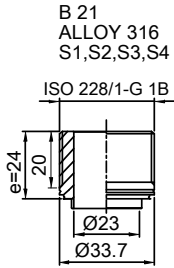


Note that all unique customer requirements (i.e tolerance) need to be verified thru Alfa Laval.



Frameplate is depressed 1.2 mm at connection S3/S4
 Pressureplate is depressed 1.2 mm / even number of channel
 plates at connections T3/T4 / uneven number of channel plates at
 connections T1/T2.

T1 T2 T3 T4 locations on back side
 correspond to S1 S2 S3 S4 on front side

HEATING SURFACE m²
 NETWEIGHT 4.1 kg
 OPERATING WEIGHT kg
 PLATE MATERIAL ALLOY 316
 PLATE GROUPING 1*19H/1*20H

ALL DIMENSIONS IN MILLIMETERS

| SIDE | MEDIA | INLET | TEMP. | OUTLET | TEMP. | FLOW RATE | PRESSURE DROP | LIQUID VOL. |
|------|-------|-------|-------|--------|-------|-----------|---------------|---------------------|
| 1 | Water | S1 | °C | S2 | °C | kg/h | kPa | 0.6 dm ³ |
| 2 | Water | S3 | °C | S4 | °C | kg/h | kPa | 0.5 dm ³ |

PRESSURE VESSEL APPROVAL

PED

CB20-40H (3287000016)

www.alfalaval.com

CUSTOMER NAME / REF. NO.

COMPANY / REF.
 Alfa Laval Nordic AB

TOTAL LENGTH 92 mm
 TOTAL WIDTH 94 mm
 TOTAL HEIGHT 324 mm

4/23/2019
 REV 0