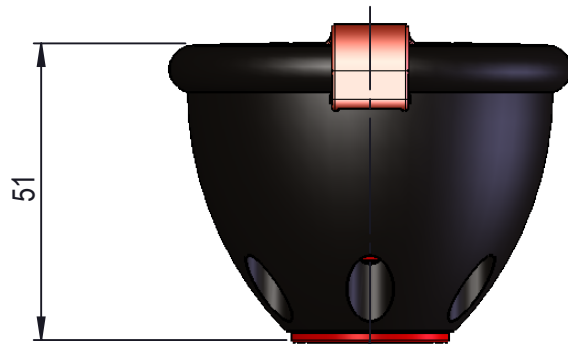


4

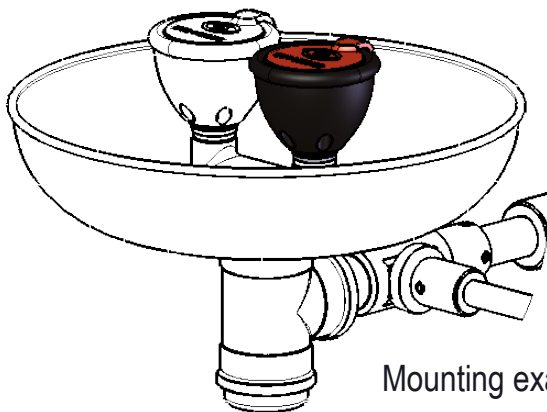
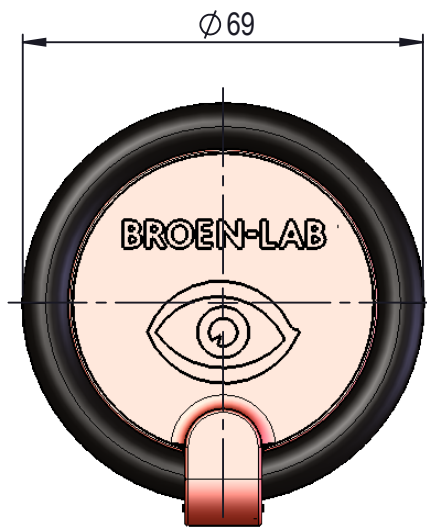
3

2

1




ISO228/1-G1/2" female inlet



Mounting example



Description:		Complete eye shower head	
Media:		Water	
Material:			
Specification:		With flowfix 7L/min	
Comments:			
Drawing type:		Customer drawing	Weight: 0.100 Kg
		All dimensions made with  are inspection dimensions	
Unspecified liniar tolerances:		Unspecified angular tolerances:	
Designed by:	Drawn by:	Released on TM No.	Date:
MWA	MWA	6736	10-08-16
Format:	Drawing No.: 17277009C		
A4			

Rev.	Pos.	Date	TM No.	Design by	Drawn by:	Change:
A	C3	03-01-23	7100	CGL	CGL	update of logo

BROEN-LAB

This drawing is our property and cannot be given to a third party, copied or otherwise used without our permission. BROEN-LAB A/S



4

3

2

1