

4

3

2

1

Area of Application:

Water

Max. working pressure 10 bar

Details:

Ceramic headwork open/close 180°

Materials in media contact:

Brass

Rubber, EPDM

Silicone based lubricant

Ceramic

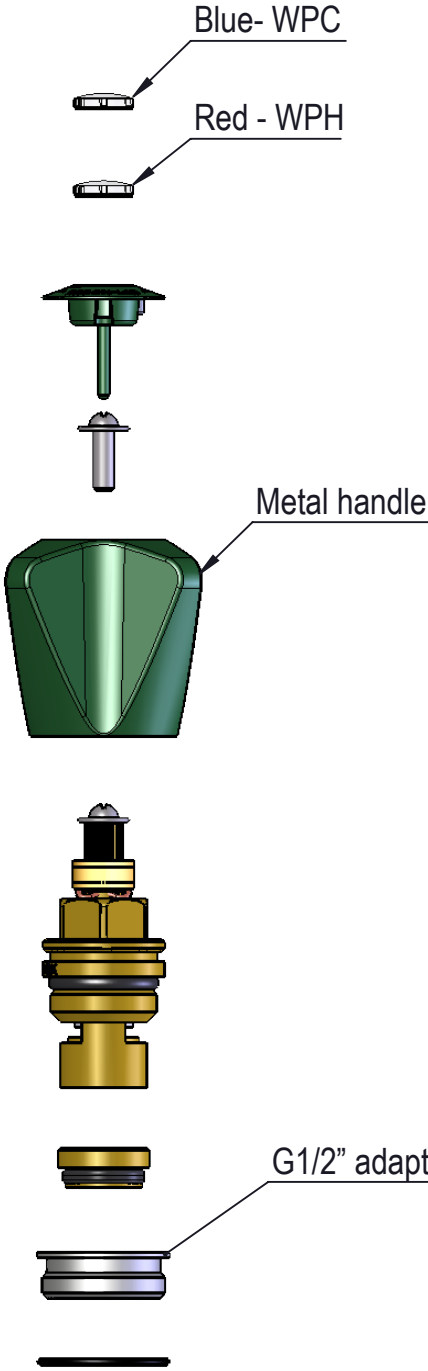
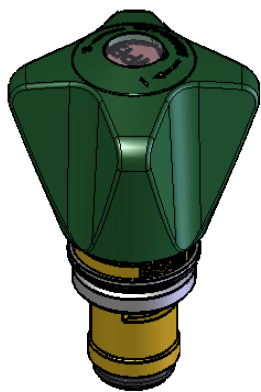
POM

Blue- WPC

Red - WPH

Metal handle

G1/2" adapter



Description:

Spare parts handel and headwork

Media:

Water

Comments:

Drawing type:

Customer drawing

Weight:

0.123 Kg

Rev.

Pos.

Date

TM No.

Design by

Drawn by:

Change:

Designed by: MWA

Drawn by: PEC

Released on TM No. 8548

Date: 24-03-21

Format: A4

Drawing No.:

19850009

BROEN-LAB

This drawing is our property and cannot be given to a third party, copied or otherwise used without our permission. BROEN-LAB A/S.

4

3

2

1