

4

3

2

1

Area of Application:

High purity water

Details:

Diaphragm headwork, open/close 1,5x360°

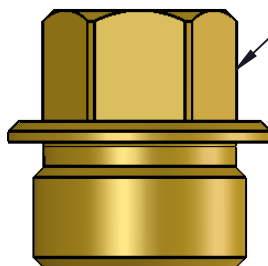
Materials in media contact:

PTFE

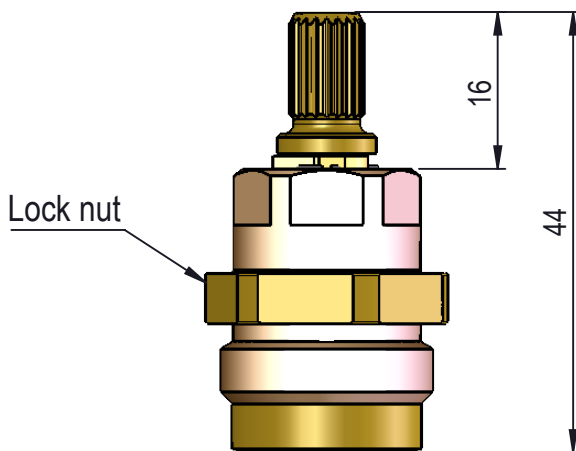
Mounting:

ISO228/1 - G½"

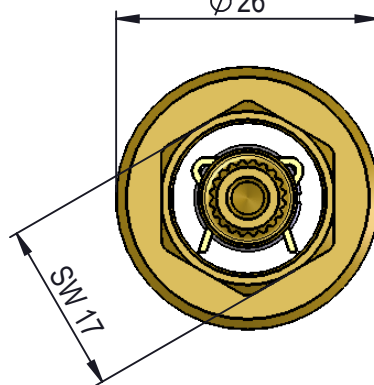
Cutting tap



Lock nut



Ø 26



Description:

Spare part kit headwork

							Media:	High purity water			
							Comments:				
							Drawing type:	Customer drawing			Weight:
											0.093 Kg
Rev.	Pos.	Date	TM No.	Design by	Drawn by:	Change:	Designed by:	Drawn by:	Released on TM No.	Date:	
							JBN	PEC	8548	22-03-21	
BROEN-LAB						This drawing is our property and cannot be given to a third party, copied or otherwise used without our permission. BROEN-LAB A/S.		Format:	Drawing No.:		
								A4	19152480		

4

3

2

1