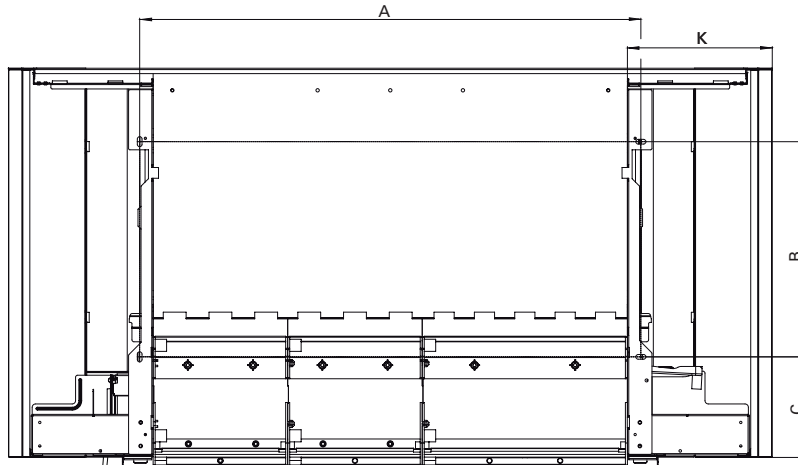
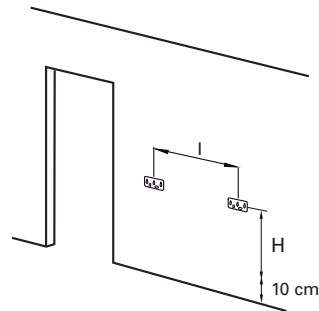
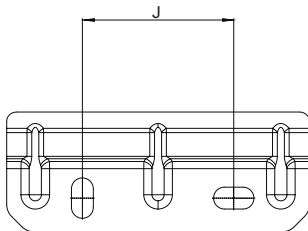
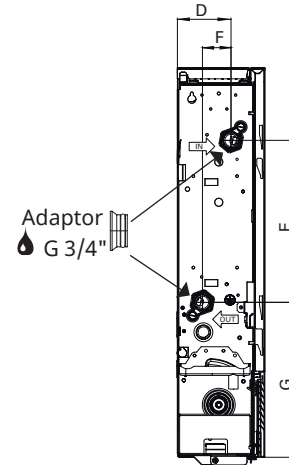
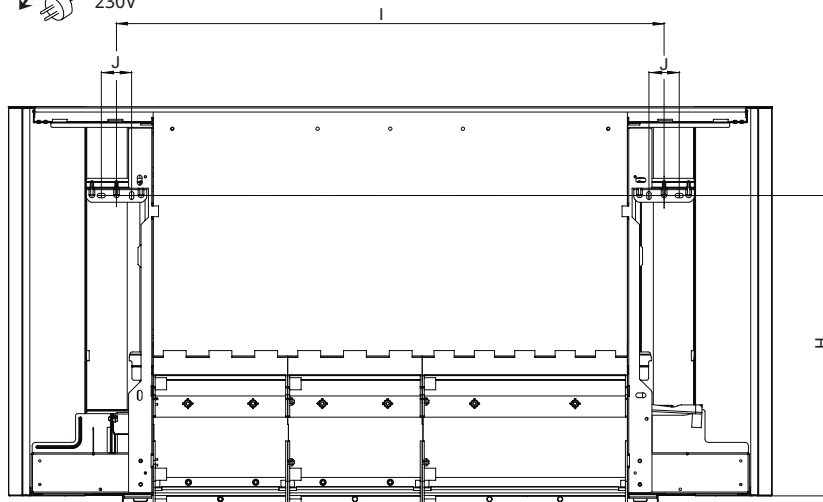
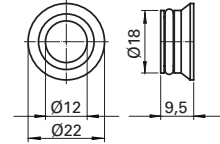


SL/SLS- Quickguide



2 x adaptor - included in box

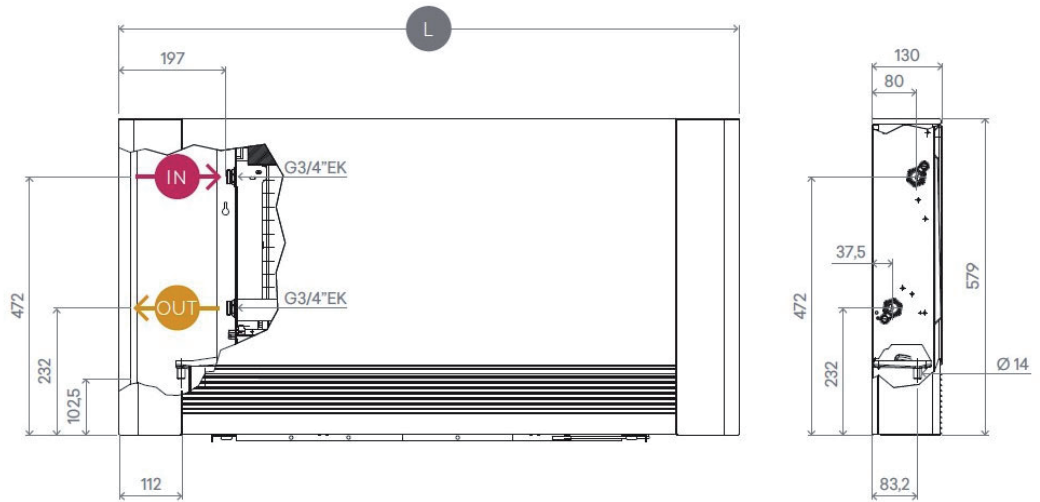


Type	A [mm]	B [mm]	C [mm]	D [mm]	E [mm]	F [mm]	G [mm]	H [mm]	I [mm]	J [mm]	K [mm]	⚡	⚡
SLS200	345	137	149	75,7	88,2	33,9	223,7	243	414	45	214,5*	G 3/4"	230V 10A
SLS400	545	137	149	75,7	88,2	33,9	223,7	243	614	45	214,5*		
SLS600	745	137	149	75,7	88,2	33,9	223,7	243	814	45	214,5*		
SLS800	945	137	149	75,7	88,2	33,9	223,7	243	1014	45	214,5*		
SLS1000	1145	137	149	75,7	88,2	33,9	223,7	243	1214	45	214,5*		
SL200	345	319,8	149	79,7	240,8	42,5	230	447	414	45	214,5*		
SL400	545	319,8	149	79,7	240,8	42,5	230	447	614	45	214,5*		
SL600	745	319,8	149	79,7	240,8	42,5	230	447	814	45	214,5*		
SL800	945	319,8	149	79,7	240,8	42,5	230	447	1014	45	214,5*		
SL1000	1145	319,8	149	79,7	240,8	42,5	230	447	1214	45	214,5*		

Water connection

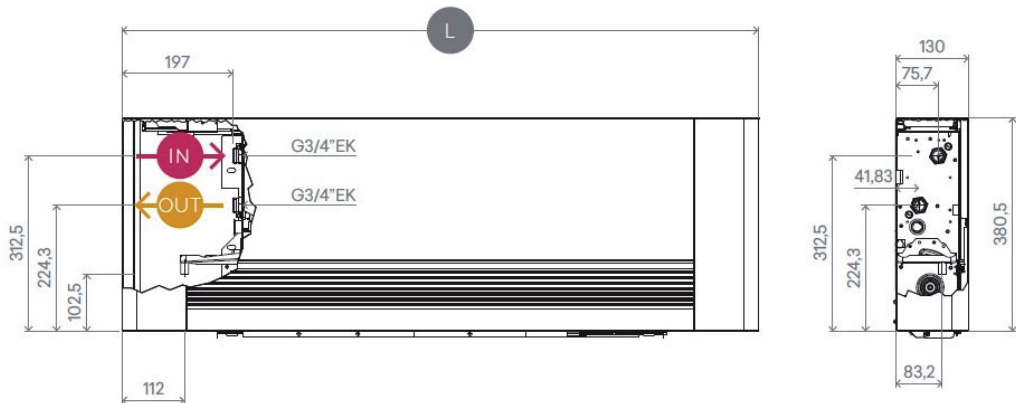
SL

Type	L [mm]
SL200	735
SL400	935
SL600	1135
SL800	1335
SL1000	1535



SLS

Type	L [mm]
SLS200	735
SLS400	935
SLS600	1135
SLS800	1335
SLS1000	1535



Main office:

Frico AB, Industrivägen 41, SE-433 61 Sävedalen, Sweden
 +46 31 336 86 00, mailbox@frico.se, www.frico.net